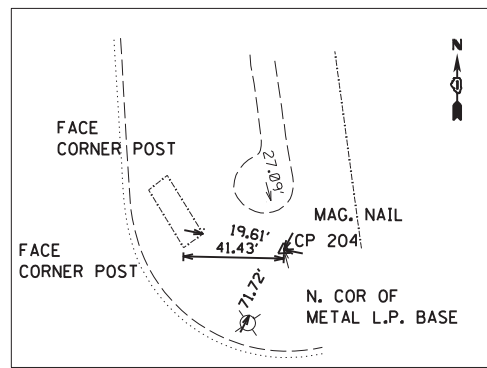


**CONTROL POINT #204**

SET \*\* I.R. WYELLOW CAP  
 STA. 85 + 07.84, 152.13' RT  
 N 1932764.00  
 E 1108373.42  
 ELEV. 644.34

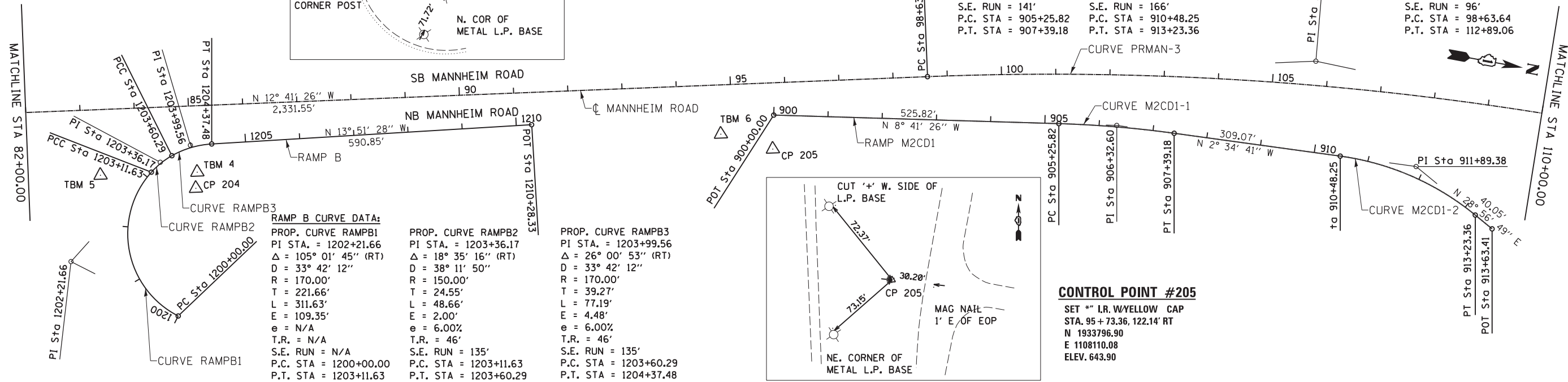


**RAMP M2CD1 CURVE DATA:**

PROP. CURVE M2CD1-1 PI STA. = 906+32.60 Δ = 6° 06' 45" (RT) D = 2° 51' 53" R = 2,000.00' T = 106.78' L = 213.36' E = 2.85' e = 4.40% T.R. = 65' S.E. RUN = 141' P.C. STA = 905+25.82 P.T. STA = 907+39.18	PROP. CURVE M2CD1-2 PI STA. = 911+89.38 Δ = 31° 31' 30" (RT) D = 11° 27' 33" R = 500.00' T = 141.13' L = 275.11' E = 19.54' e = 6.00% T.R. = 56' S.E. RUN = 166' P.C. STA = 910+48.25 P.T. STA = 913+23.36
---	--

**MANNHEIM ROAD CURVE DATA:**

PROP. CURVE PRMAN-3  
 PI STA. = 105+80.05  
 Δ = 14° 15' 15" (RT)  
 D = 1° 00' 00"  
 R = 5,729.58'  
 T = 716.41'  
 L = 1,425.42'  
 E = 44.61'  
 e = 2.00%  
 T.R. = 96'  
 S.E. RUN = 96'  
 P.C. STA = 98+63.64  
 P.T. STA = 112+89.06

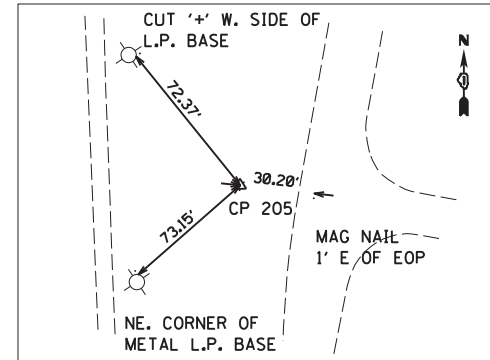


**RAMP B CURVE DATA:**

PROP. CURVE RAMPB1 PI STA. = 1202+21.66 Δ = 105° 01' 45" (RT) D = 33° 42' 12" R = 170.00' T = 221.66' L = 311.63' E = 109.35' e = N/A T.R. = N/A S.E. RUN = N/A P.C. STA = 1200+00.00 P.T. STA = 1203+11.63	PROP. CURVE RAMPB2 PI STA. = 1203+36.17 Δ = 18° 35' 16" (RT) D = 38° 11' 50" R = 150.00' T = 24.55' L = 48.66' E = 2.00' e = 6.00% T.R. = 46' S.E. RUN = 135' P.C. STA = 1203+11.63 P.T. STA = 1203+60.29	PROP. CURVE RAMPB3 PI STA. = 1203+99.56 Δ = 26° 00' 53" (RT) D = 33° 42' 12" R = 170.00' T = 39.27' L = 77.19' E = 4.48' e = 6.00% T.R. = 46' S.E. RUN = 135' P.C. STA = 1203+60.29 P.T. STA = 1204+37.48
---	---	---

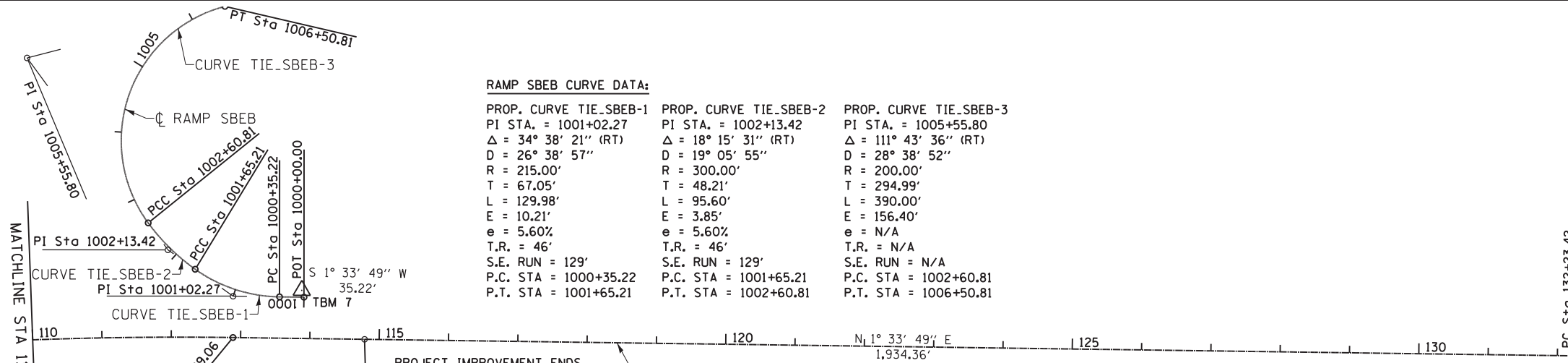
**CONTROL POINT #205**

SET \*\* I.R. WYELLOW CAP  
 STA. 95 + 73.36, 122.14' RT  
 N 1933796.90  
 E 1108110.08  
 ELEV. 643.90



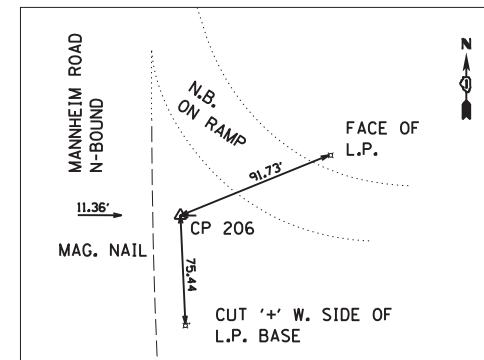
**RAMP SBEB CURVE DATA:**

PROP. CURVE TIE_SBEB-1 PI STA. = 1001+02.27 Δ = 34° 38' 21" (RT) D = 26° 38' 57" R = 215.00' T = 67.05' L = 129.98' E = 10.21' e = 5.60% T.R. = 46' S.E. RUN = 129' P.C. STA = 1000+35.22 P.T. STA = 1001+65.21	PROP. CURVE TIE_SBEB-2 PI STA. = 1002+13.42 Δ = 18° 15' 31" (RT) D = 19° 05' 55" R = 300.00' T = 48.21' L = 95.60' E = 3.85' e = 5.60% T.R. = 46' S.E. RUN = 129' P.C. STA = 1001+65.21 P.T. STA = 1002+60.81	PROP. CURVE TIE_SBEB-3 PI STA. = 1005+55.80 Δ = 111° 43' 36" (RT) D = 28° 38' 52" R = 200.00' T = 294.99' L = 390.00' E = 156.40' e = N/A T.R. = N/A S.E. RUN = N/A P.C. STA = 1002+60.81 P.T. STA = 1006+50.81
---	---	---



**RAMP EBNB CURVE DATA:**

PROP. CURVE TIE\_EBNB-1  
 PI STA. = 1105+80.14  
 Δ = 131° 25' 32" (RT)  
 D = 26° 38' 57"  
 R = 215.00'  
 T = 476.46'  
 L = 493.17'  
 E = 307.21'  
 e = 5.60%  
 T.R. = 46'  
 S.E. RUN = 129'  
 P.C. STA = 1101+03.69  
 P.T. STA = 1105+96.86



**CONTROL POINT #206**

SET \*\* I.R. WYELLOW CAP  
 STA. 112 + 92.15, 63.09' RT  
 N 1935469.67  
 E 1107852.47  
 ELEV. 641.69



USER NAME = ROBERT.ESQUIVEL	DESIGNED MT	REVISED -
PLOT SCALE = 100.0000' / in.	DRAWN MT	REVISED -
PLOT DATE = 10/18/2012	CHECKED VT	REVISED -
	DATE 10/19/2012	REVISED -

**STATE OF ILLINOIS  
 DEPARTMENT OF TRANSPORTATION**

**ALIGNMENT, TIES & BENCHMARKS  
 MANNHEIM ROAD**

SCALE: 1" = 100' SHEET NO. OF SHEETS STA. 82+00.00 TO STA. 138+00.00

F.A.P. RTE.	SECTION	COUNTY	TOTAL SHEETS	SHEET NO.
330	0105 WRS&HB	COOK	605	55
CONTRACT NO. 60C37				
ILLINOIS FED. AID PROJECT				