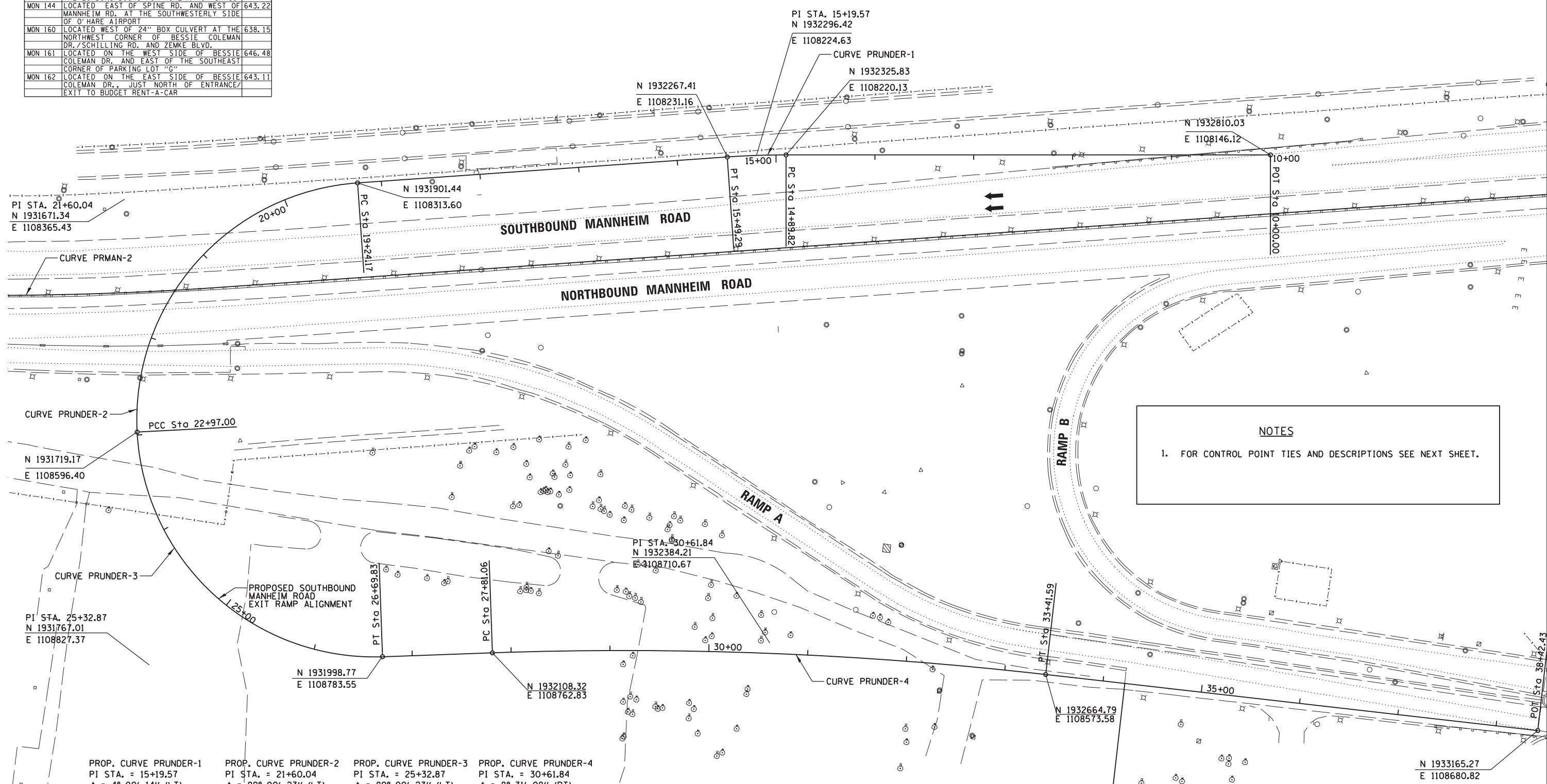


NO.	DESCRIPTION	ELEV.
MON 140	LOCATED ON THE SOUTHEASTERLY SIDE EXPRESS CENTER RD. JUST SOUTHEAST OF THE LOADING DOCKS FOR KOREAN AIR CARGO	647.49
MON 144	LOCATED EAST OF SPINE RD. AND WEST OF MANNHEIM RD. AT THE SOUTHWESTERLY SIDE OF O'HARE AIRPORT	643.22
MON 160	LOCATED WEST OF 24" BOX CULVERT AT THE NORTHWEST CORNER OF BESSIE COLEMAN DR./SCHILLING RD. AND ZEMKE BLVD.	638.15
MON 161	LOCATED ON THE WEST SIDE OF BESSIE COLEMAN DR. AND EAST OF THE SOUTHEAST CORNER OF PARKING LOT "G"	646.48
MON 162	LOCATED ON THE EAST SIDE OF BESSIE COLEMAN DR., JUST NORTH OF ENTRANCE/EXIT TO BUDGET RENT-A-CAR	643.11



**NOTES**

1. FOR CONTROL POINT TIES AND DESCRIPTIONS SEE NEXT SHEET.

<b>PROP. CURVE PRUNDER-1</b> PI STA. = 15+19.57 $\Delta = 4^\circ 00' 14''$ (LT) $D = 6^\circ 43' 58''$ $R = 851.00'$ $T = 29.75'$ $L = 59.47'$ $E = 0.52'$ $e = 2.0\%$ $T.R. = 0'$ $S.E. RUN = 0'$ $P.C. STA. = 14+89.82$ $P.T. STA. = 15+49.29$	<b>PROP. CURVE PRUNDER-2</b> PI STA. = 21+60.04 $\Delta = 89^\circ 00' 23''$ (LT) $D = 23^\circ 52' 24''$ $R = 240.00'$ $T = 235.87'$ $L = 372.83'$ $E = 96.51'$ $e = -6.0\%$ $T.R. = 0'$ $S.E. RUN = 97'$ $P.C. STA. = 19+24.17$ $P.C.C. STA. = 22+97.00$	<b>PROP. CURVE PRUNDER-3</b> PI STA. = 25+32.87 $\Delta = 89^\circ 00' 23''$ (LT) $D = 23^\circ 52' 24''$ $R = 240.00'$ $T = 235.87'$ $L = 372.83'$ $E = 96.51'$ $e = -6.0\%$ $T.R. = 0'$ $S.E. RUN = 0'$ $P.C.C. STA. = 22+97.00$ $P.T. STA. = 26+69.83$	<b>PROP. CURVE PRUNDER-4</b> PI STA. = 30+61.84 $\Delta = 8^\circ 31' 08''$ (RT) $D = 1^\circ 31' 11''$ $R = 3,770.00'$ $T = 280.78'$ $L = 560.53'$ $E = 10.44'$ $e = 2.0\%$ $T.R. = 137'$ $S.E. RUN = 57'$ $P.C. STA. = 27+81.06$ $P.T. STA. = 33+41.59$
---	--	---	---

**CBG** CHRISTOPHER B. BURKE ENGINEERING, LTD.  
 9575 W. Higgins Road, Suite 600  
 Rosemont, Illinois 60018  
 (847) 923-0900

USER NAME = pmagnelli	DESIGNED - NJM	REVISED -
PLOT SCALE = 1/8" = 1'	DRAWN - PWN	REVISED -
PLOT DATE = 10/17/2012	CHECKED - SNS	REVISED -
	DATE = 10/17/2012	REVISED -

**STATE OF ILLINOIS  
DEPARTMENT OF TRANSPORTATION**

**ALIGNMENT, TIES AND BENCHMARKS  
BALMORAL UNDERPASS**

SCALE: SHEET NO. OF SHEETS STA. TO STA.

F.A. RTE.	SECTION	COUNTY	TOTAL SHEETS	SHEET NO.
330	0105 WRS&HB	COOK	605	56
CONTRACT NO. 60G37				

ILLINOIS FED. AID PROJECT