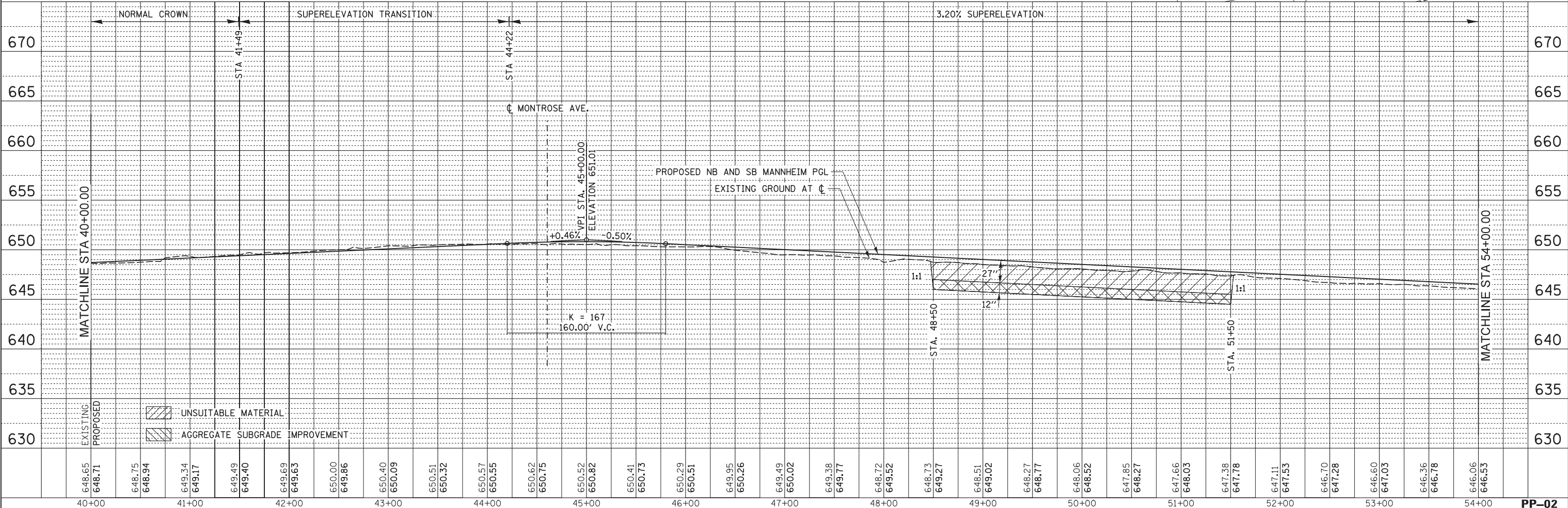
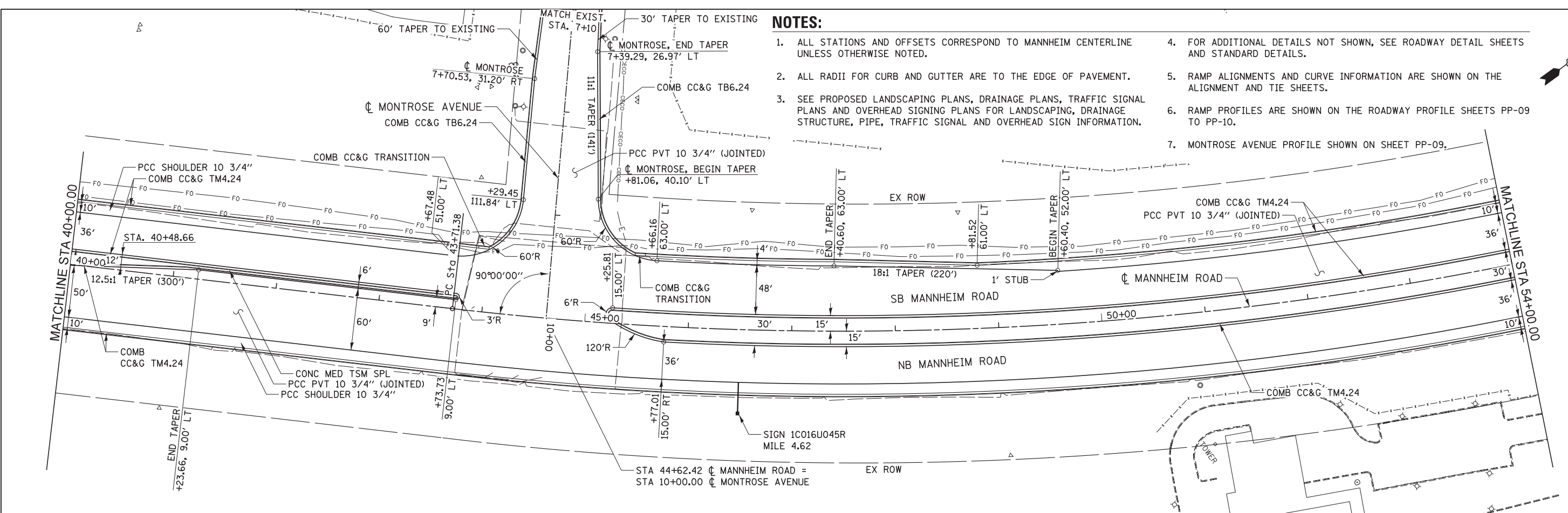


NOTES:

1. ALL STATIONS AND OFFSETS CORRESPOND TO MANNHEIM CENTERLINE UNLESS OTHERWISE NOTED.
2. ALL RADII FOR CURB AND GUTTER ARE TO THE EDGE OF PAVEMENT.
3. SEE PROPOSED LANDSCAPING PLANS, DRAINAGE PLANS, TRAFFIC SIGNAL PLANS AND OVERHEAD SIGNING PLANS FOR LANDSCAPING, DRAINAGE STRUCTURE, PIPE, TRAFFIC SIGNAL AND OVERHEAD SIGN INFORMATION.
4. FOR ADDITIONAL DETAILS NOT SHOWN, SEE ROADWAY DETAIL SHEETS AND STANDARD DETAILS.
5. RAMP ALIGNMENTS AND CURVE INFORMATION ARE SHOWN ON THE ALIGNMENT AND TIE SHEETS.
6. RAMP PROFILES ARE SHOWN ON THE ROADWAY PROFILE SHEETS PP-09 TO PP-10.
7. MONTROSE AVENUE PROFILE SHOWN ON SHEET PP-09.

PLAN	SURVEYED	DATE
	PLOTTED	
	GRADES CHECKED	
	STRUCTURE NOTATIONS CHKD	
	NOTE BOOK NO.	
	CHECKED	
	DATE	

PROFILE	SURVEYED	DATE
	PLOTTED	
	GRADES CHECKED	
	STRUCTURE NOTATIONS CHKD	
	NOTE BOOK NO.	
	CHECKED	
	DATE	



USER NAME = mkosir
 DESIGNED LLS/MMK
 DRAWN MMK
 CHECKED LLS
 DATE 10/19/12

REVISED -
 REVISED -
 REVISED -
 REVISED -

**STATE OF ILLINOIS
 DEPARTMENT OF TRANSPORTATION**

**PLAN AND PROFILE
 MANNHEIM ROAD**

SCALE: 1" = 50' SHEET NO. 2 OF 12 SHEETS STA. 40+00.00 TO STA. 54+00.00

F.A.P. RTE.	SECTION	COUNTY	TOTAL SHEETS	SHEET NO.
330	0105 WRS&HB	COOK	605	65
CONTRACT NO. 60G37				
ILLINOIS FED. AID PROJECT				