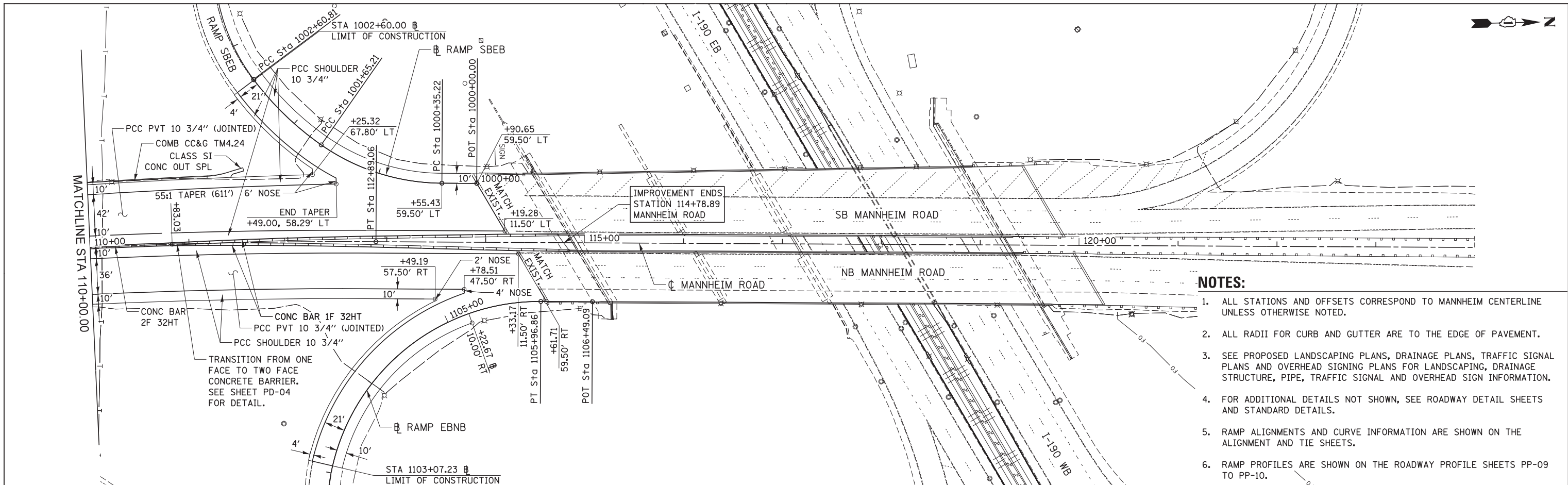
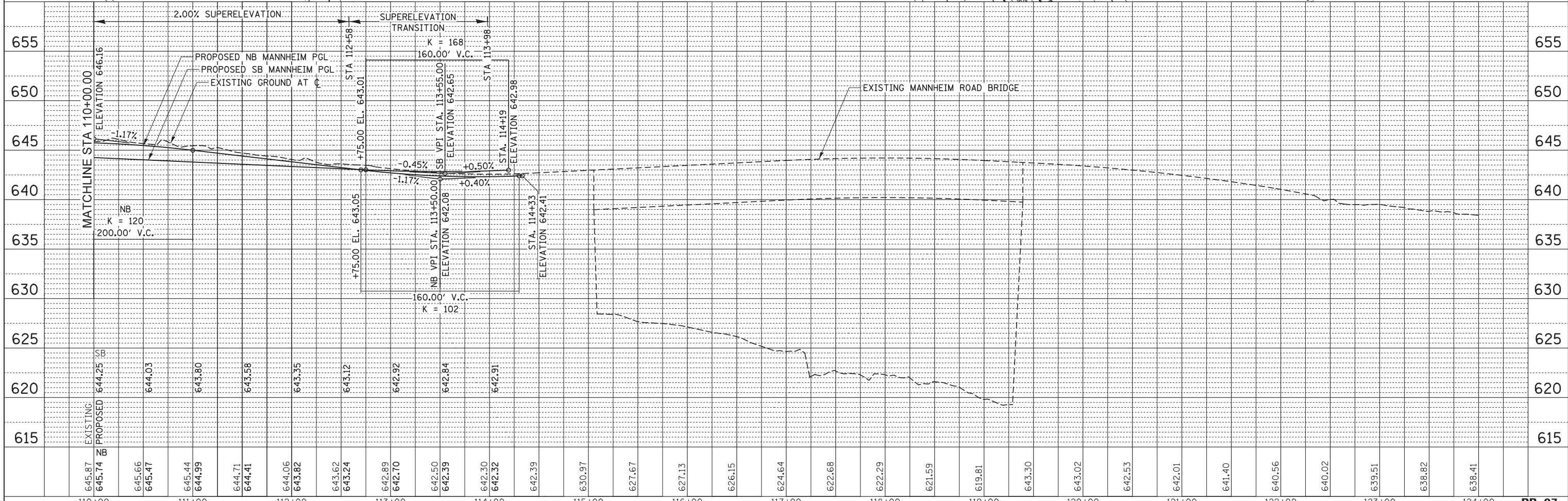


DATE	
BY	
PLAN	SURVEYED
	PLOTTED
	ALIGNED
	CHECKED
	DESIGNED
	FILE NAME
	NO.

DATE	
BY	
PROFILE	SURVEYED
	PLOTTED
	GRADES CHECKED
	STRUCTURE
	NOTATIONS CHD
	NO.



- NOTES:**
- ALL STATIONS AND OFFSETS CORRESPOND TO MANNHEIM CENTERLINE UNLESS OTHERWISE NOTED.
  - ALL RADII FOR CURB AND GUTTER ARE TO THE EDGE OF PAVEMENT.
  - SEE PROPOSED LANDSCAPING PLANS, DRAINAGE PLANS, TRAFFIC SIGNAL PLANS AND OVERHEAD SIGNING PLANS FOR LANDSCAPING, DRAINAGE STRUCTURE, PIPE, TRAFFIC SIGNAL AND OVERHEAD SIGN INFORMATION.
  - FOR ADDITIONAL DETAILS NOT SHOWN, SEE ROADWAY DETAIL SHEETS AND STANDARD DETAILS.
  - RAMP ALIGNMENTS AND CURVE INFORMATION ARE SHOWN ON THE ALIGNMENT AND TIE SHEETS.
  - RAMP PROFILES ARE SHOWN ON THE ROADWAY PROFILE SHEETS PP-09 TO PP-10.



USER NAME = mkosir	DESIGNED LLS/MMK	REVISED -
PLOT SCALE = 50:1	CHECKED LLS	REVISED -
PLOT DATE = 19-OCT-2012	DATE 10/19/12	REVISED -

**STATE OF ILLINOIS  
DEPARTMENT OF TRANSPORTATION**

**PLAN AND PROFILE  
MANNHEIM ROAD**

SCALE: 1" = 50' SHEET NO. 7 OF 12 SHEETS STA. 110+00.00 TO STA. EOP

F.A.P. RTE. 330	SECTION 0105 WRS&HB	COUNTY COOK	TOTAL SHEETS 605	SHEET NO. 70
CONTRACT NO. 60G37				