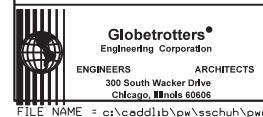
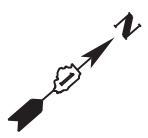
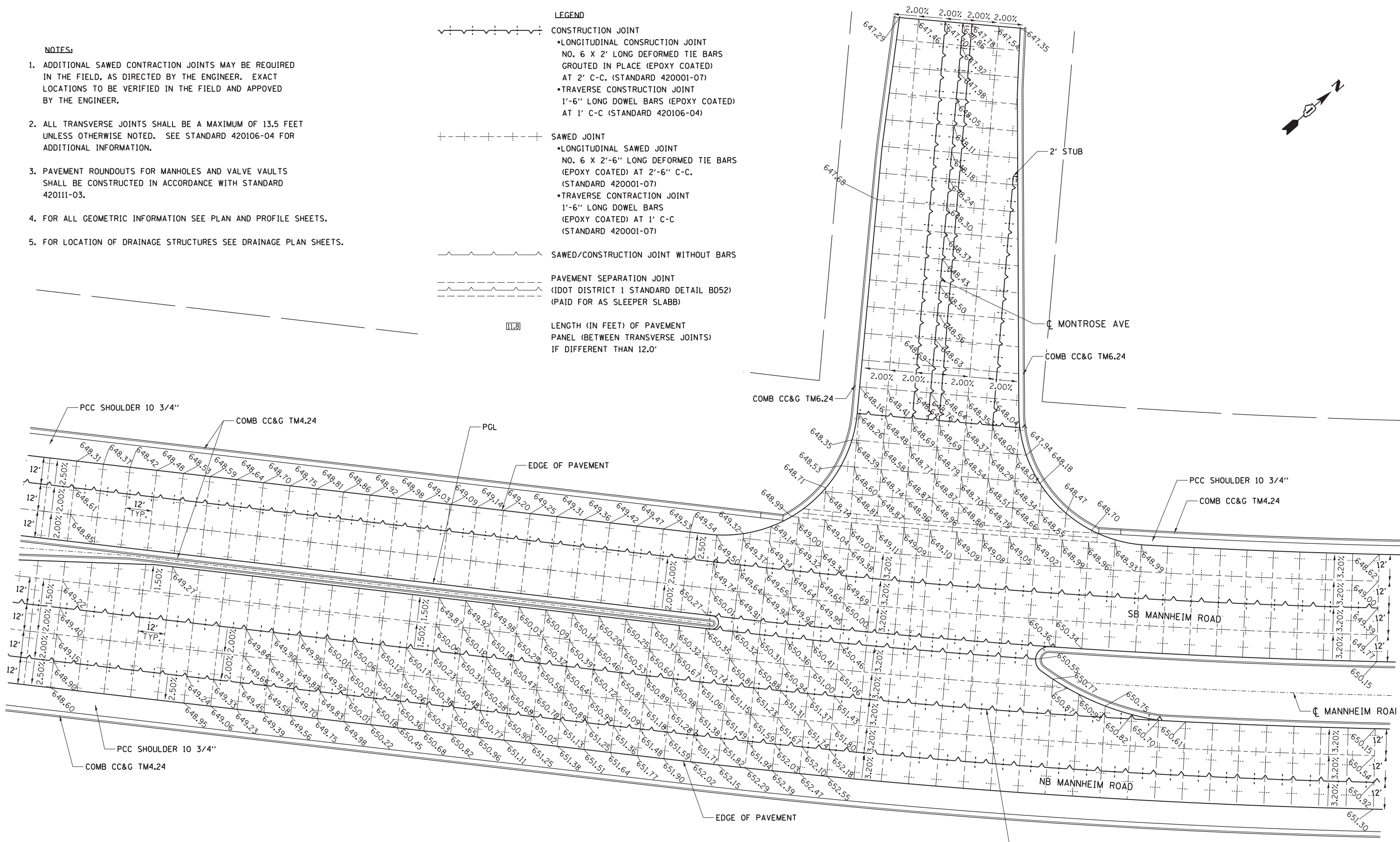


**NOTES:**

1. ADDITIONAL SAWED CONTRACTION JOINTS MAY BE REQUIRED IN THE FIELD, AS DIRECTED BY THE ENGINEER. EXACT LOCATIONS TO BE VERIFIED IN THE FIELD AND APPROVED BY THE ENGINEER.
2. ALL TRANSVERSE JOINTS SHALL BE A MAXIMUM OF 13.5 FEET UNLESS OTHERWISE NOTED. SEE STANDARD 420106-04 FOR ADDITIONAL INFORMATION.
3. PAVEMENT ROUNDOUTS FOR MANHOLES AND VALVE VAULTS SHALL BE CONSTRUCTED IN ACCORDANCE WITH STANDARD 420111-03.
4. FOR ALL GEOMETRIC INFORMATION SEE PLAN AND PROFILE SHEETS.
5. FOR LOCATION OF DRAINAGE STRUCTURES SEE DRAINAGE PLAN SHEETS.

**LEGEND**

- CONSTRUCTION JOINT
  - LONGITUDINAL CONSTRUCTION JOINT NO. 6 X 2' LONG DEFORMED TIE BARS GROUTED IN PLACE (EPOXY COATED) AT 2' C-C. (STANDARD 420001-07)
  - TRAVERSE CONSTRUCTION JOINT 1'-6" LONG DOWEL BARS (EPOXY COATED) AT 1' C-C (STANDARD 420106-04)
- SAWED JOINT
  - LONGITUDINAL SAWED JOINT NO. 6 X 2'-6" LONG DEFORMED TIE BARS (EPOXY COATED) AT 2'-6" C-C. (STANDARD 420001-07)
  - TRAVERSE CONSTRUCTION JOINT 1'-6" LONG DOWEL BARS (EPOXY COATED) AT 1' C-C (STANDARD 420001-07)
- SAWED/CONSTRUCTION JOINT WITHOUT BARS
- PAVEMENT SEPARATION JOINT (IDOT DISTRICT 1 STANDARD DETAIL BD52) (PAID FOR AS SLEEPER SLABB)
- LENGTH (IN FEET) OF PAVEMENT PANEL (BETWEEN TRANSVERSE JOINTS) IF DIFFERENT THAN 12.0'



USER NAME = stephen.schuh	DESIGNED RE	REVISED -
PLOT SCALE = 20.0000' / in.	DRAWN RE	REVISED -
PLOT DATE = 10/19/2012	CHECKED VT	REVISED -
	DATE 10/19/12	REVISED -

**STATE OF ILLINOIS  
DEPARTMENT OF TRANSPORTATION**

**PAVEMENT JOINTING PLAN  
MANNHEIM ROAD AND MONTROSE AVENUE**

SCALE: 1" = 20' SHEET NO. 1 OF 7 SHEETS STA. TO STA.

F.A.P. RTE. 330	SECTION 0105 WRS&HB	COUNTY COOK	TOTAL SHEETS 605	SHEET NO. 82
CONTRACT NO. 60G37				ILLINOIS FED. AID PROJECT

JP-1

FILE NAME = c:\cadd\lib\pw\sschuh\p\greet.lakes\dms47844\016037-sht-plan\_jnt1.dgn