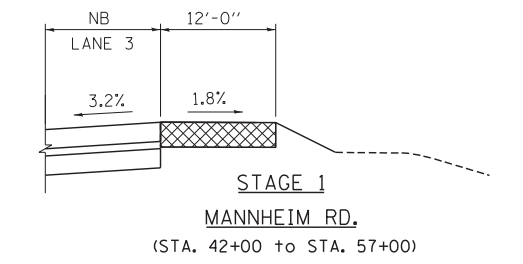
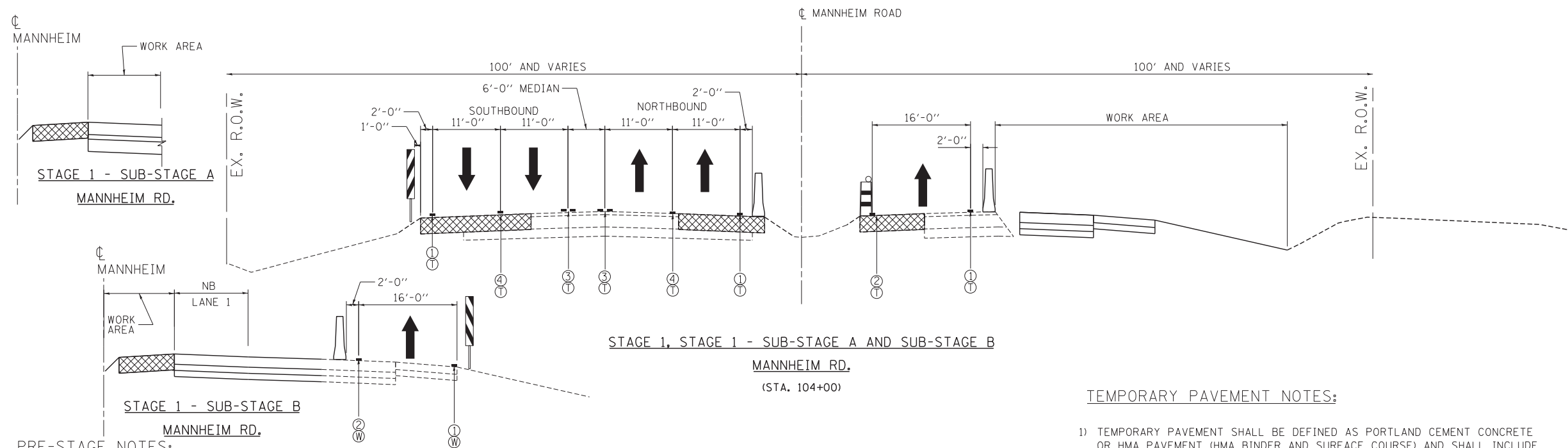


DETAIL "A"
SEE TEMPORARY CONCRETE BARRIER NOTE 1.



STAGE 1
MANNHEIM RD.
(STA. 42+00 to STA. 57+00)

PRE-STAGE NOTES:

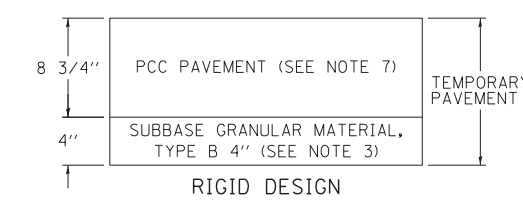
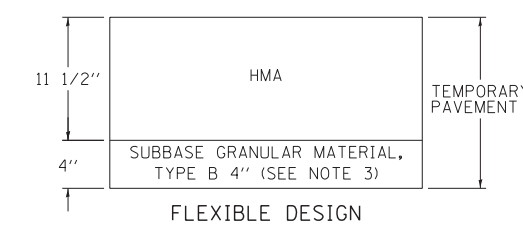
- 1) CONSTRUCT TEMPORARY PAVEMENT TO ACCOMMODATE TRAFFIC FOR THE NEXT STAGE WITH DAILY LANE CLOSURES DURING NON-PEAK HOURS.
- 2) MATCH EXISTING CROSS SLOPE IN SUPER ELEVATED SECTIONS.
- 3) THE "DROP OFF BETWEEN TRAVEL LANE AND SHOULDER/ EDGE OF PAVEMENT" TABLE SPECIFIES THE PHYSICAL TREATMENT REQUIRED BY THE CONTRACTOR FOR DROP-OFF LOCATIONS ADJACENT TO THE TRAVEL LANE. WHERE THE WORK AREA IS NOT SEPARATED FROM THE TRAVEL LANE BY TEMPORARY CONCRETE BARRIER DURING THE PRE-STAGE WIDENING, THE CONTRACTOR SHALL SCHEDULE THE WORK THAT CREATES A DROP-OFF TO BE COMPLETED WITHIN THE TIME PERIOD SPECIFIED ON THE TABLE SUCH THAT TEMPORARY CONCRETE BARRIER MAY BE ELIMINATED.

TEMPORARY CONCRETE BARRIER:

- 1) AT LOCATIONS WHERE A DROP OFF FROM THE GROUND SURFACE ADJACENT TO THE TEMPORARY CONCRETE BARRIER IS 3.5' OR LESS FROM THE TEMPORARY CONCRETE BARRIER, THE TEMPORARY CONCRETE BARRIER SHALL BE SECURED TO THE TEMPORARY PAVEMENT OR PAVED SHOULDER, USING THREE ANCHORING PINS INSTALLED ON THE TRAFFIC SIDE OF THE TEMPORARY CONCRETE BARRIER. THIS WORK SHALL BE INCLUDED IN THE CONTRACT UNIT PRICES FOR TEMPORARY CONCRETE BARRIER AND RELOCATE TEMPORARY CONCRETE BARRIER. SEE DETAIL "A"

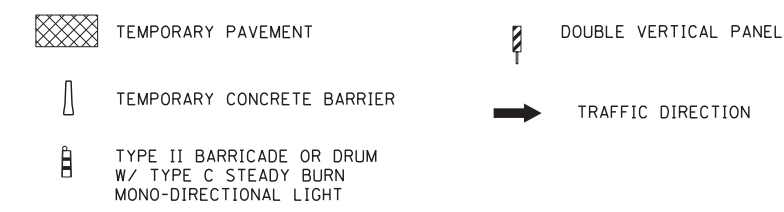
TEMPORARY PAVEMENT NOTES:

- 1) TEMPORARY PAVEMENT SHALL BE DEFINED AS PORTLAND CEMENT CONCRETE OR HMA PAVEMENT (HMA BINDER AND SURFACE COURSE) AND SHALL INCLUDE SUBBASE GRANULAR MATERIAL TYPE B 4".
- 2) TEMPORARY PAVEMENT REMOVAL WILL BE PAID FOR AT THE CONTRACT UNIT PRICE PER SQ YD FOR PAVEMENT REMOVAL.
- 3) SUBGRADE SOILS WITH AN IBR < 2.5 SHALL BE UNDERCUT AND REPLACED WITH 12" AGGREGATE SUBGRADE IMPROVEMENT.
- 4) IF CONTRACTOR CHOOSES TO USE PC CONCRETE TEMPORARY PAVEMENT, THE PAVEMENT SHALL CONSIST OF CLASS PV CONCRETE MEETING THE REQUIREMENTS OF ART. 1020 OF THE STANDARD SPECIFICATION.



TEMPORARY PAVEMENT DETAIL

MAINTENANCE OF TRAFFIC LEGEND



- ① PVT MK - LINE 4" WHITE
- ② PVT MK - LINE 4" YELLOW
- ③ PVT MK - DBL 4" YELLOW
- ④ PVT MK - LINE 4" WHITE (10' DASH- 30' SKIP)
- ⑤ PVT MK - LINE 6" WHITE
- ⑥ PVT MK - LINE 8" WHITE
- ⑦ EXISTING PAVEMENT MARKING
- T TEMP PVT MK (SEE GENERAL NOTES SHT G-03)
- W WET REF TEM TAPE T3 (SEE GENERAL NOTES SHT G-03)
- P PERM PVT MK (SEE PVT MK PLANS)

N:\160637-STAGING\1.DGN, N:\160637-BORBERT.DGN, N:\160637-STAGING\1.DGN, F:\DOC\EXP\CHI-00012584-02\COMMON\FSET\TEMP\SET\1.DGN, F:\DOC\EXP\CHI-00012584-02\COMMON\FSET\TEMP\SET\1.DGN, F:\DOC\EXP\CHI-00012584-02\COMMON\FSET\TEMP\SET\1.DGN, F:\DOC\EXP\CHI-00012584-02\COMMON\FSET\TEMP\SET\1.DGN

FILE NAME =	USER NAME = *USER*	DESIGNED - JZP	REVISED -	STATE OF ILLINOIS DEPARTMENT OF TRANSPORTATION	MAINTENANCE OF TRAFFIC TYPICAL SECTIONS PRE-STAGE AND STAGE 1 - SUB-STAGE A			F.A. RTE.	SECTION	COUNTY	TOTAL SHEETS	SHEET NO.	
FILEL		DRAWN - JZP	REVISED -		SCALE: 1"=10'	SHEET NO.	OF SHEETS	STA.	TO STA.	0105 WRS&HB	COOK	605	91
	PLOT SCALE = *SCALE*	CHECKED - KDA	REVISED -		CONTRACT NO. 60G37								
	PLOT DATE = *DATE*	DATE - 10/19/12	REVISED -		ILLINOIS FED. AID PROJECT								