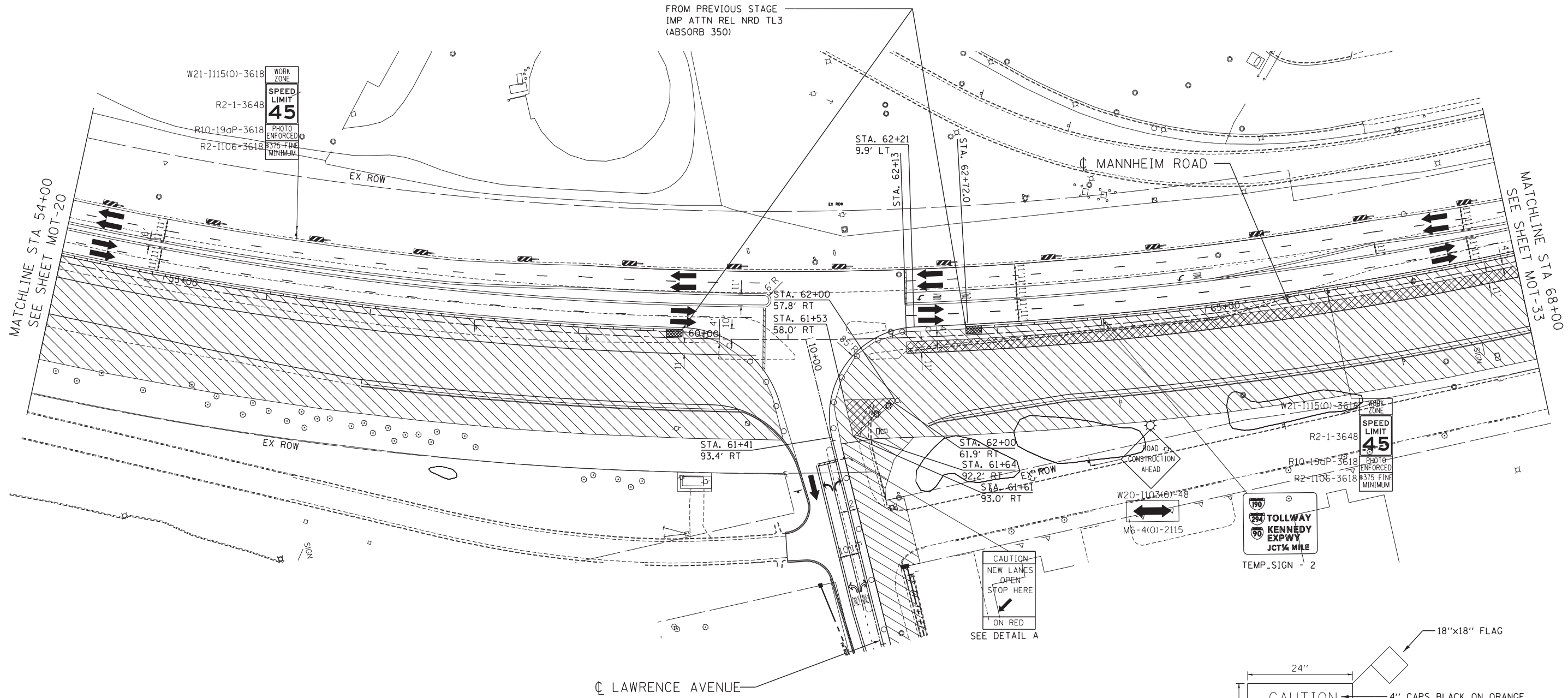




FROM PREVIOUS STAGE
IMP ATTN REL NRD TL3
(ABSORB 350)

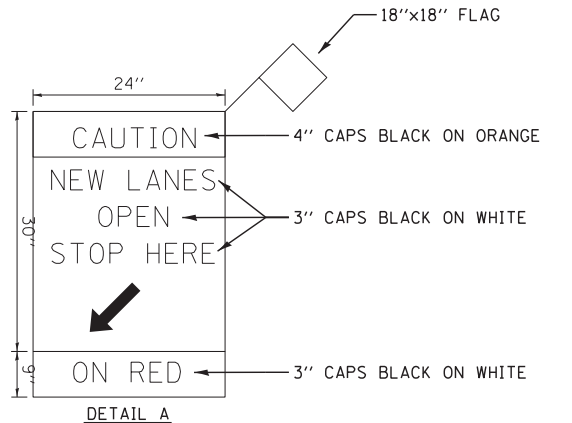


MAINTENANCE OF TRAFFIC LEGEND

	WORK AREA		TRAFFIC DIRECTION		ARROW BOARD	①	PVT MK - LINE 4" WHITE	⑦	PVT MK - LINE 24" WHITE
	TEMPORARY PAVEMENT (TO BE CONSTRUCTED IN CURRENT STAGE)		BARRICADE, TYPE III, W/ TYPE A BI-DIRECTIONAL FLASHING LIGHT		DOUBLE VERTICAL PANEL	②	PVT MK - LINE 4" YELLOW	⑧	PVT MK - LINE 8" WHITE
	TYPE II BARRICADES OR DRUMS W/ TYPE C STEADY BURN LIGHT		PROPOSED SIGN		TEMPORARY CONCRETE BARRIER	③	PVT MK - DBL 4" YELLOW	T	TEMP PVT MK (SEE GENERAL NOTES SHT G-03)
	TYPE B MONO-DIRECTIONAL FLASHING LIGHT		RAMP CLOSED		WET REF TEM TAPE T3 (SEE GENERAL NOTES SHT G-03)	④	PVT MK - LINE 6" WHITE	W	WET REF TEM TAPE T3 (SEE GENERAL NOTES SHT G-03)
					PERM PVT MK (SEE PVT MK PLANS)	⑤	PVT MK - LINE 12"	P	PERM PVT MK (SEE PVT MK PLANS)
						⑥	PVT MK - LTRS & SYMB		

NOTE:

- SIDEROAD, INTERSECTION, AND DRIVEWAY TRAFFIC CONTROL SHALL BE IN ACCORDANCE WITH DISTRICT DETAIL TC-10.
- SEE SHEET MOT-37 FOR LAWRENCE AVENUE MAINTENANCE OF TRAFFIC



\D:\6037-ALTIMENT.DGN, \D:\6037-LAYOUT.DGN, \D:\6037-TOPOBIB.DGN, \D:\6037-STAGINGIB.DGN, \D:\6037-MOT-GUIDESIGN.DGN, \D:\6037-IMP-ATTN-REL-NRD-TL3.DGN, \D:\6037-TEMP-SHEET-PLT.DGN, \D:\6037-SHT-STAGINGIB-4.DGN, \D:\6037-TEMP-SHEET-PLT.DGN, \D:\6037-SHT-STAGINGIB-4.DGN