

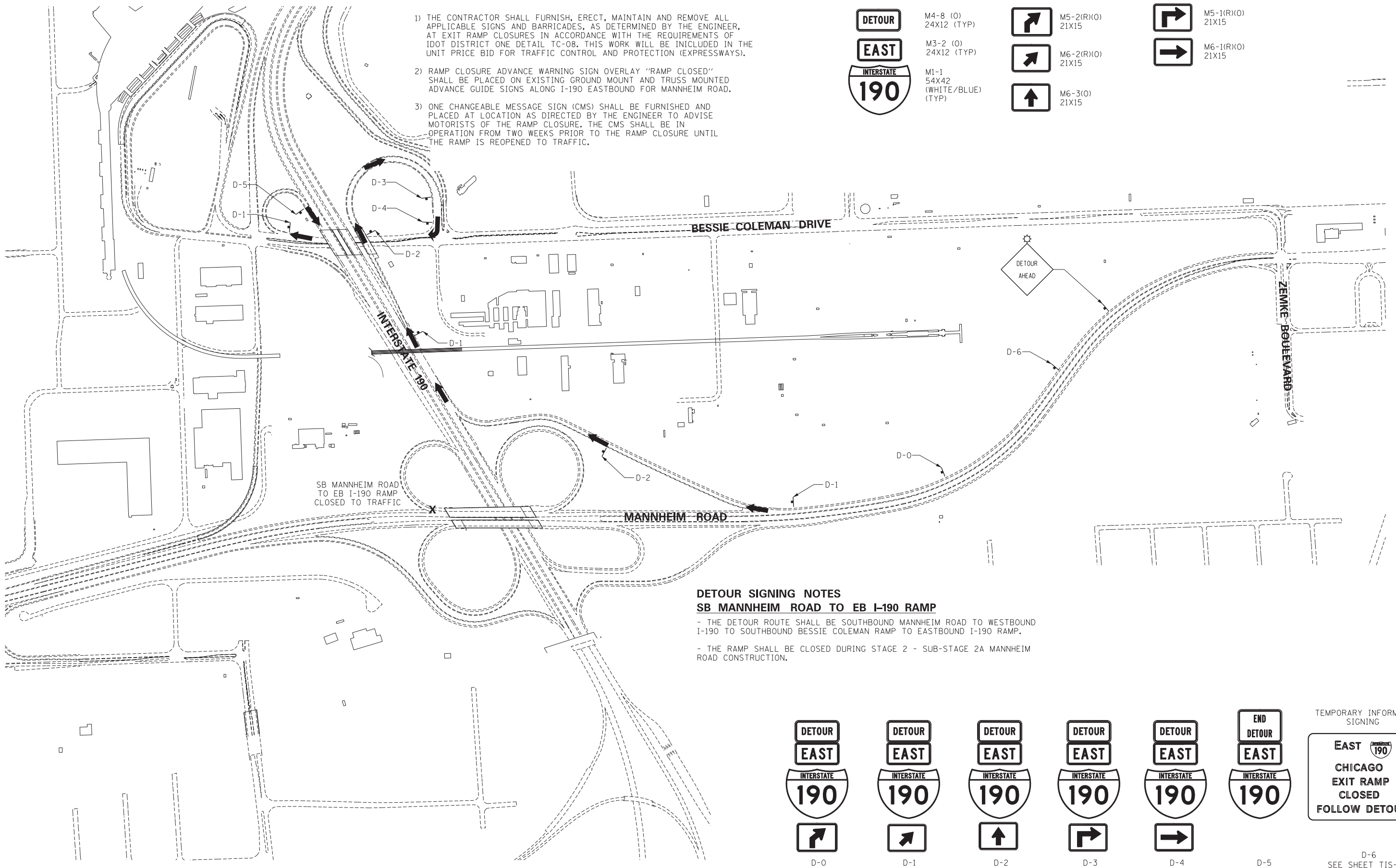


RAMP CLOSURE NOTES

- 1) THE CONTRACTOR SHALL FURNISH, ERECT, MAINTAIN AND REMOVE ALL APPLICABLE SIGNS AND BARRICADES, AS DETERMINED BY THE ENGINEER, AT EXIT RAMP CLOSURES IN ACCORDANCE WITH THE REQUIREMENTS OF IDOT DISTRICT ONE DETAIL TC-08. THIS WORK WILL BE INCLUDED IN THE UNIT PRICE BID FOR TRAFFIC CONTROL AND PROTECTION (EXPRESSWAYS).
- 2) RAMP CLOSURE ADVANCE WARNING SIGN OVERLAY "RAMP CLOSED" SHALL BE PLACED ON EXISTING GROUND MOUNT AND TRUSS MOUNTED ADVANCE GUIDE SIGNS ALONG I-190 EASTBOUND FOR MANNHEIM ROAD.
- 3) ONE CHANGEABLE MESSAGE SIGN (CMS) SHALL BE FURNISHED AND PLACED AT LOCATION AS DIRECTED BY THE ENGINEER TO ADVISE MOTORISTS OF THE RAMP CLOSURE. THE CMS SHALL BE IN OPERATION FROM TWO WEEKS PRIOR TO THE RAMP CLOSURE UNTIL THE RAMP IS REOPENED TO TRAFFIC.

DETOUR SIGNING LEGEND:

	M4-8 (0) 24X12 (TYP)		M5-2(R)(0) 21X15		M5-1(R)(0) 21X15
	M3-2 (0) 24X12 (TYP)		M6-2(R)(0) 21X15		M6-1(R)(0) 21X15
	M1-1 54X42 (WHITE/BLUE) (TYP)		M6-3(0) 21X15		



**DETOUR SIGNING NOTES
SB MANNHEIM ROAD TO EB I-190 RAMP**

- THE DETOUR ROUTE SHALL BE SOUTHBOUND MANNHEIM ROAD TO WESTBOUND I-190 TO SOUTHBOUND BESSIE COLEMAN RAMP TO EASTBOUND I-190 RAMP.
- THE RAMP SHALL BE CLOSED DURING STAGE 2 - SUB-STAGE 2A MANNHEIM ROAD CONSTRUCTION.

D-0	D-1	D-2	D-3	D-4	D-5

TEMPORARY INFORMATION SIGNING

D-6
SEE SHEET TIS-08 FOR DETAIL

DTR-02

N:\190-MASTER_TOP\01.DGN, N:\190-MASTER_TOP\02.DGN, N:\190-MASTER_TOP\03.DGN, N:\190-MASTER_TOP\04.DGN, N:\190-MASTER_TOP\05.DGN, N:\190-MASTER_TOP\06.DGN, N:\190-MASTER_TOP\07.DGN, N:\190-MASTER_TOP\08.DGN, N:\190-MASTER_TOP\09.DGN, N:\190-MASTER_TOP\10.DGN, N:\190-MASTER_TOP\11.DGN, N:\190-MASTER_TOP\12.DGN, N:\190-MASTER_TOP\13.DGN, N:\190-MASTER_TOP\14.DGN, N:\190-MASTER_TOP\15.DGN, N:\190-MASTER_TOP\16.DGN, N:\190-MASTER_TOP\17.DGN, N:\190-MASTER_TOP\18.DGN, N:\190-MASTER_TOP\19.DGN, N:\190-MASTER_TOP\20.DGN, N:\190-MASTER_TOP\21.DGN, N:\190-MASTER_TOP\22.DGN, N:\190-MASTER_TOP\23.DGN, N:\190-MASTER_TOP\24.DGN, N:\190-MASTER_TOP\25.DGN, N:\190-MASTER_TOP\26.DGN, N:\190-MASTER_TOP\27.DGN, N:\190-MASTER_TOP\28.DGN, N:\190-MASTER_TOP\29.DGN, N:\190-MASTER_TOP\30.DGN, N:\190-MASTER_TOP\31.DGN, N:\190-MASTER_TOP\32.DGN, N:\190-MASTER_TOP\33.DGN, N:\190-MASTER_TOP\34.DGN, N:\190-MASTER_TOP\35.DGN, N:\190-MASTER_TOP\36.DGN, N:\190-MASTER_TOP\37.DGN, N:\190-MASTER_TOP\38.DGN, N:\190-MASTER_TOP\39.DGN, N:\190-MASTER_TOP\40.DGN, N:\190-MASTER_TOP\41.DGN, N:\190-MASTER_TOP\42.DGN, N:\190-MASTER_TOP\43.DGN, N:\190-MASTER_TOP\44.DGN, N:\190-MASTER_TOP\45.DGN, N:\190-MASTER_TOP\46.DGN, N:\190-MASTER_TOP\47.DGN, N:\190-MASTER_TOP\48.DGN, N:\190-MASTER_TOP\49.DGN, N:\190-MASTER_TOP\50.DGN, N:\190-MASTER_TOP\51.DGN, N:\190-MASTER_TOP\52.DGN, N:\190-MASTER_TOP\53.DGN, N:\190-MASTER_TOP\54.DGN, N:\190-MASTER_TOP\55.DGN, N:\190-MASTER_TOP\56.DGN, N:\190-MASTER_TOP\57.DGN, N:\190-MASTER_TOP\58.DGN, N:\190-MASTER_TOP\59.DGN, N:\190-MASTER_TOP\60.DGN, N:\190-MASTER_TOP\61.DGN, N:\190-MASTER_TOP\62.DGN, N:\190-MASTER_TOP\63.DGN, N:\190-MASTER_TOP\64.DGN, N:\190-MASTER_TOP\65.DGN, N:\190-MASTER_TOP\66.DGN, N:\190-MASTER_TOP\67.DGN, N:\190-MASTER_TOP\68.DGN, N:\190-MASTER_TOP\69.DGN, N:\190-MASTER_TOP\70.DGN, N:\190-MASTER_TOP\71.DGN, N:\190-MASTER_TOP\72.DGN, N:\190-MASTER_TOP\73.DGN, N:\190-MASTER_TOP\74.DGN, N:\190-MASTER_TOP\75.DGN, N:\190-MASTER_TOP\76.DGN, N:\190-MASTER_TOP\77.DGN, N:\190-MASTER_TOP\78.DGN, N:\190-MASTER_TOP\79.DGN, N:\190-MASTER_TOP\80.DGN, N:\190-MASTER_TOP\81.DGN, N:\190-MASTER_TOP\82.DGN, N:\190-MASTER_TOP\83.DGN, N:\190-MASTER_TOP\84.DGN, N:\190-MASTER_TOP\85.DGN, N:\190-MASTER_TOP\86.DGN, N:\190-MASTER_TOP\87.DGN, N:\190-MASTER_TOP\88.DGN, N:\190-MASTER_TOP\89.DGN, N:\190-MASTER_TOP\90.DGN, N:\190-MASTER_TOP\91.DGN, N:\190-MASTER_TOP\92.DGN, N:\190-MASTER_TOP\93.DGN, N:\190-MASTER_TOP\94.DGN, N:\190-MASTER_TOP\95.DGN, N:\190-MASTER_TOP\96.DGN, N:\190-MASTER_TOP\97.DGN, N:\190-MASTER_TOP\98.DGN, N:\190-MASTER_TOP\99.DGN, N:\190-MASTER_TOP\100.DGN

FILE NAME =	USER NAME = *USER*	DESIGNED - BRH	REVISED -
FILEL		DRAWN - JZP	REVISED -
	PLOT SCALE = *SCALE*	CHECKED - KDA	REVISED -
	PLOT DATE = *DATE*	DATE - 10/19/12	REVISED -

**STATE OF ILLINOIS
DEPARTMENT OF TRANSPORTATION**

DETOUR PLAN			
SB MANNHEIM ROAD TO EB I-190			
SCALE: 1"=300'	SHEET NO.	OF SHEETS	STA. TO STA.

F.A. RTE.	SECTION	COUNTY	TOTAL SHEETS	SHEET NO.
	0105 WRS&HB	COOK	605	159
CONTRACT NO. 60G37				
ILLINOIS FED. AID PROJECT				

