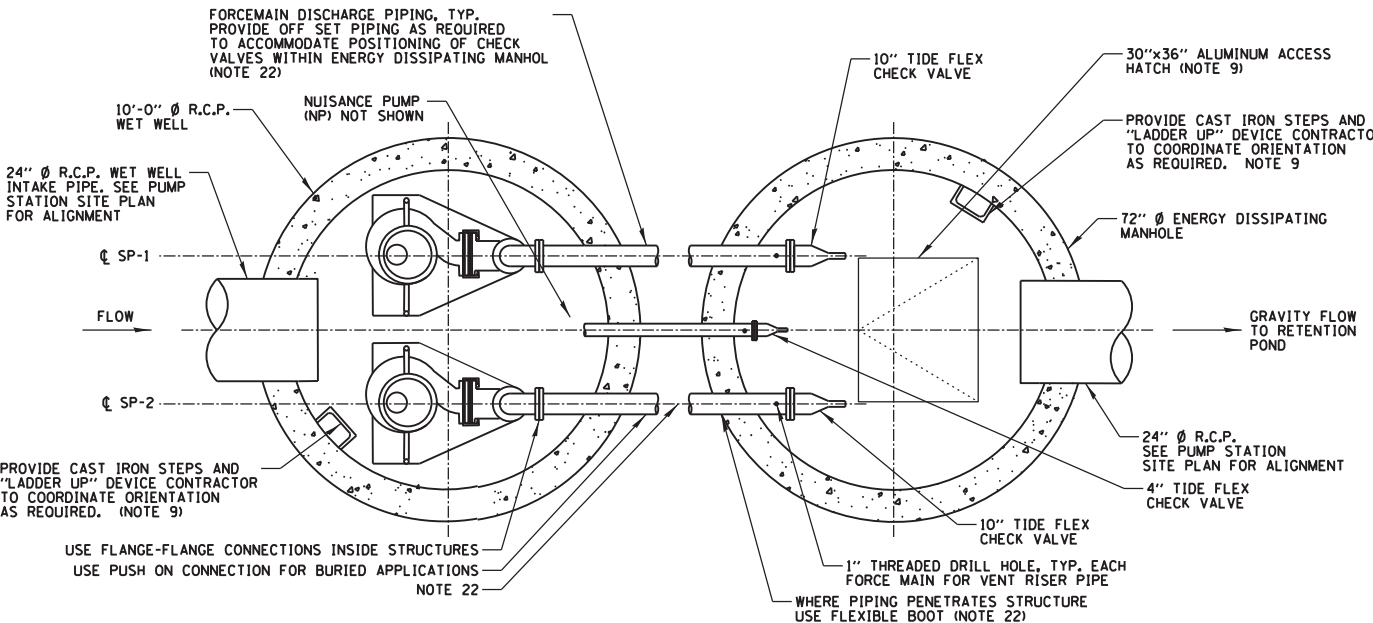
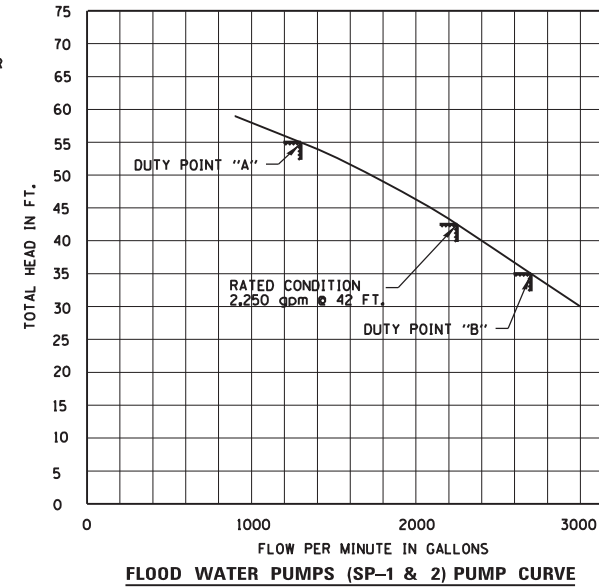
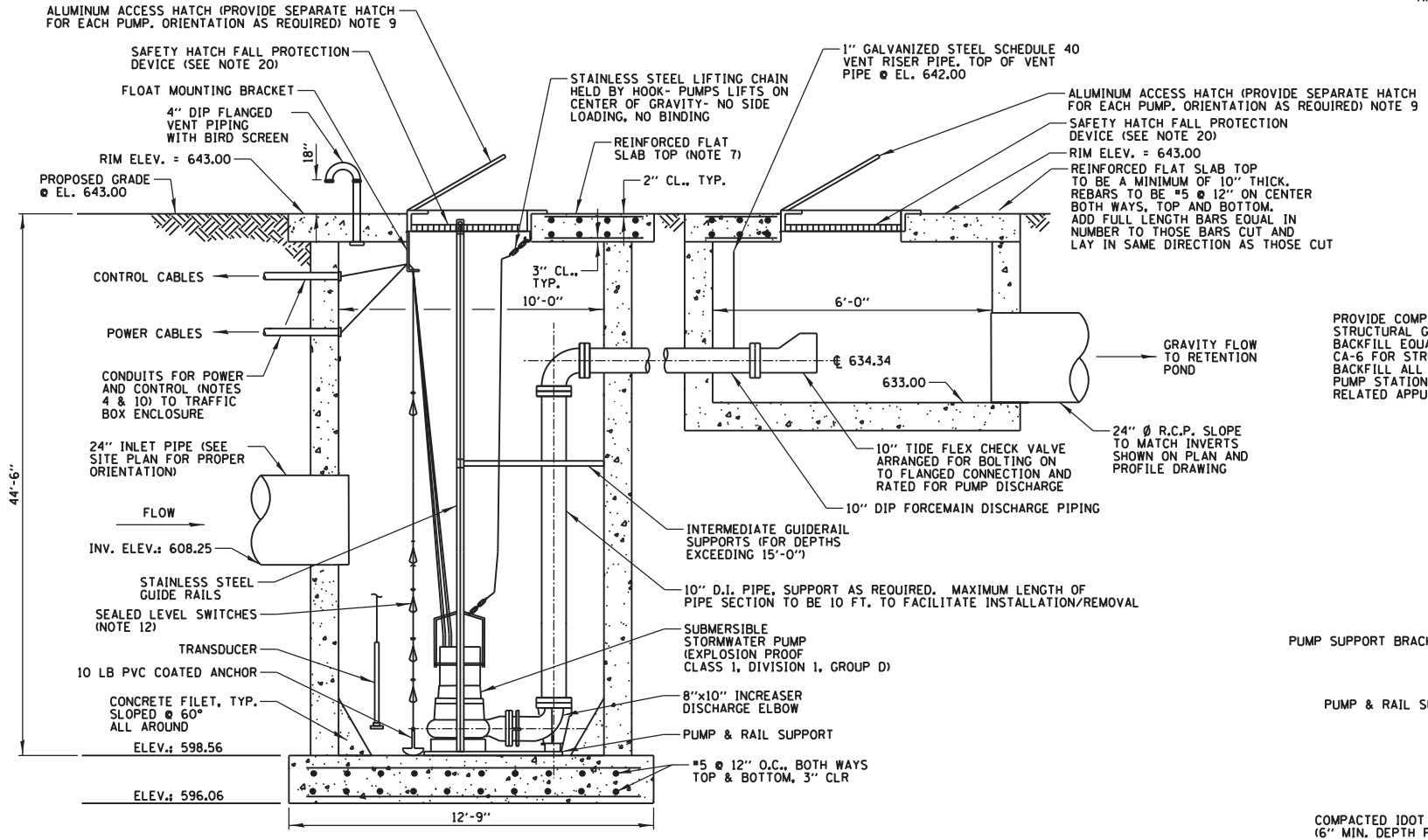


STORMWATER PUMP STATION NOTES

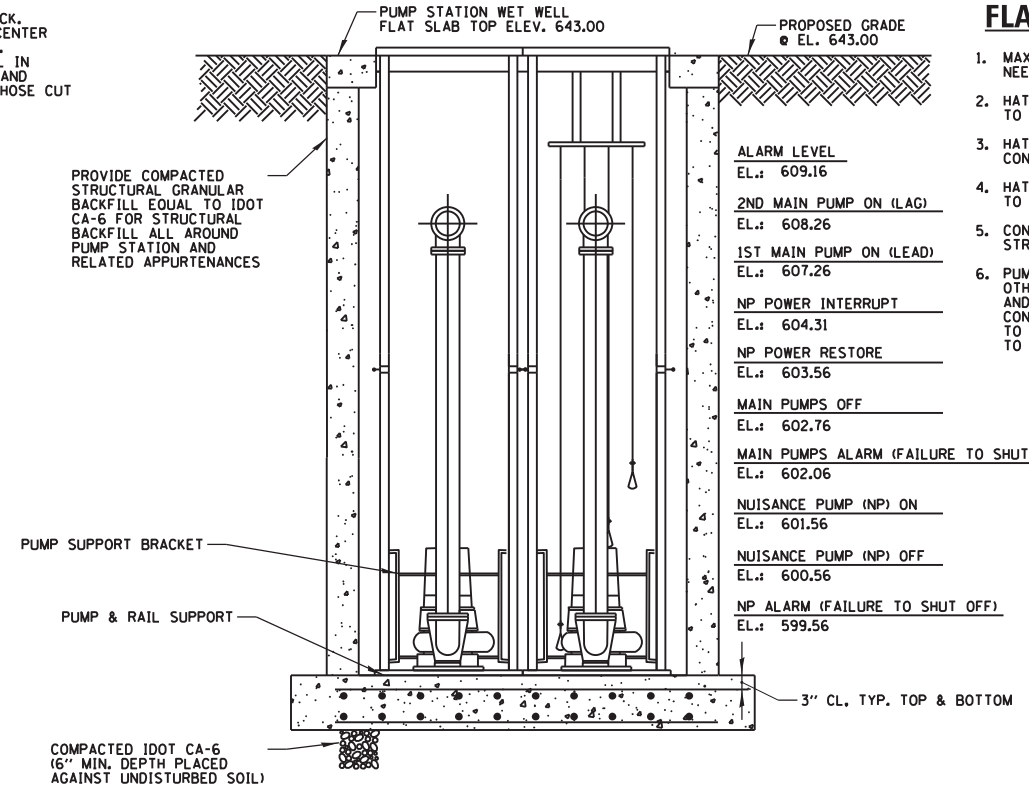
- ANY AND ALL DEWATERING REQUIRED DURING CONSTRUCTION SHALL BE THE RESPONSIBILITY OF THE CONTRACTOR.
- ORIENTATION OF PIPING, CONDUITS, EQUIPMENT ETC. MAY VARY. CONTRACTOR TO COORDINATE WITH EQUIPMENT LOCATIONS SHOWN ON OTHER SHEETS.
- DIMENSIONING SHOWN ON THIS DRAWING IS NOT TO SCALE (NTS). DO NOT SCALE THIS DRAWING.
- LOCATION ORIENTATION AND NUMBER OF EMBEDDED AND/OR BURIED CONDUITS SHALL BE THE RESPONSIBILITY OF THE CONTRACTOR. MINIMUM NUMBER OF CONDUITS ARE SHOWN ON CONDUIT PLAN. CABLES INTEGRALLY WIRED AND PROVIDED WITH PUMPS AND FLOATS TO BE OF SUFFICIENT LENGTH TO CONNECT TO CONTROLLER WITHOUT SPLICING.
- CONTRACTOR TO COORDINATE POSITION AND SIZE OF PUMP STATION HATCHES TO ALLOW FOR PUMP REMOVAL.
- USE OF PUMPS SUPPLIED UNDER THIS CONTRACT FOR THE PURPOSE OF DEWATERING DURING CONSTRUCTION, WILL NOT BE PERMITTED.
- SEE FLAT SLAB TOP & HATCH NOTES.
- PROVIDE AUTOMATIC ALTERNATOR TO ALTERNATE OPERATION OF LEAD AND LAG PUMPS.
- HATCHES SHALL BE ALUMINUM WITH BRONZE AND/OR 316 STAINLESS STEEL TRIM. LOAD RATING SHALL BE 300 PSF. CONTRACTOR TO COORDINATE HATCH SIZE AND ORIENTATION FOR ACCESS TO CAST IRON STEPS.
- PROVIDE SEPARATE CONDUITS FOR EACH PUMP POWER CABLE. PROVIDE SEPARATE CONDUIT FOR PUMP CONTROL CABLES. PROVIDE SEPARATE CONDUIT FOR FLOAT CONTROL CABLES.
- CONTRACTOR RESPONSIBLE FOR EQUIPMENT ORIENTATION.
- PROVIDE PLASTIC COATED ANCHOR FOR FLOAT SWITCH TO PREVENT MOVEMENT. (SEE DETAILS ON THIS SHEET)
- ALL FASTENERS, MOUNTING HARDWARE, AND LIFTING CHAINS SHALL BE STAINLESS STEEL.
- FOR OPERATING NOTES, SEE PROPOSED PUMP STATION DETAILS (3 OF 4).
- (NOT USED).
- THE FLOAT SYSTEM SHALL OPERATE AS A BACK-UP SYSTEM. A PRIMARY LEVEL MANAGEMENT SYSTEM SHALL BE PROVIDED AND SHALL CONSIST OF A PRESSURE TRANSDUCER AND A CONTROLLER.
- PROVIDE CONDENSATION HEATER AND THERMOSWITCH FOR TRAFFIC BOX ENCLOSURE. HEATER SIZE TO BE COORDINATED BY CONTRACTOR FOR SIZE OF TRAFFIC BOX ENCLOSURE.
- PROVIDE A DUAL 20 AMP GFCI CONVENIENCE OUTLET LOCATED WITHIN THE PUMP CONTROLLER.
- HATCHES SHALL BE GASKETED, ODOR RESISTANT AND LOCKABLE. ALL LOCKS SHALL BE KEYPED TO MATCH OWNER'S REQUIREMENTS.
- SAFETY GRATES SHALL SPAN THE ENTIRE OPENING OF EACH HATCH. A SINGLE SAFETY GRATE SPANNING ALL HATCHES WILL NOT BE ACCEPTABLE. GRATES SHALL BE CAPABLE OF SUPPORTING A 300 PSF.
- PRIOR TO FABRICATION, CONTRACTOR SHALL VERIFY GRADE ELEVATIONS AND INVERTS OF EXISTING SEWERS AND STRUCTURES. CONTRACTOR SHALL COORDINATE INVERTS SUCH THAT JOINTS DO NOT FALL AT LOCATION(S) OF PIPE PENETRATIONS.
- PROVIDE SOLID SLEEVE COUPLINGS AND/OR OFFSET FITTINGS AS REQUIRED TO ACCOMMODATE PIPING ALIGNMENTS BETWEEN WET WELL AND VALVE VAULT. USE FLEXIBLE BOOT SEAL PIPING THROUGH PENETRATION.
- PROVIDE WATER TIGHT JOINT BY FILLING ANNULAR SPACE BETWEEN OPENING AND PIPE WITH SEALING GROUT, TYPICAL FOR ALL PIPING WHICH PENETRATES WET WELL AND/OR VALVE VAULT STRUCTURE.



PLAN VIEW
N.T.S.



SIDE VIEW
N.T.S.



END VIEW
N.T.S.

FLAT SLAB TOP & HATCH NOTES

- MAXIMIZE TO ALLOW FOR REINFORCEMENT; NEED (AS MIN.) 12" BETWEEN CLEAR OPENINGS OF HATCHES.
- HATCH FOR NUISANCE PUMP: 30.5" X 25" (NOMINAL) CONTRACTOR TO COORDINATE LOCATION. (SEE NOTE 5)
- HATCHES FOR MAIN FLOODWATER PUMP, EACH 42" X 32" (NOMINAL); CONTRACTOR TO COORDINATE LOCATION. (SEE NOTE 5)
- HATCH FOR EDMH: 30" X 36" (NOMINAL) CONTRACTOR TO COORDINATE LOCATION. (SEE NOTE 5)
- CONCRETE: FLAT SLAB (FOR WET-WELL) THICKNESS = 12", STRENGTH = 4000 PSI
- PUMP/HATCH LAYOUT BASED UPON HYDROMATIC PUMPS. OTHER PUMPING UNITS MAY REQUIRE LARGER HATCH AND/OR DIFFERENT ORIENTATION THAN INDICATED. CONTRACTOR TO COORDINATE AS REQUIRED. CONTRACTOR TO PROVIDE HATCH SIZE AS REQUIRED FOR ACCESS TO LADDER RUNGS.

CAUTION:
DO NOT ALLOW EXCAVATION TO FILL WITH WATER. STRUCTURE WILL FLOAT. CONTRACTOR TO TAKE APPROPRIATE PRECAUTIONS, AND PROVIDE DEWATERING AS REQUIRED.

NOTE:
VILLAGE OF ROSEMONT WILL BE OWNER/OPERATOR OF THIS PUMPING FACILITY

CHRISTOPHER B. BURKE ENGINEERING, LTD.
9575 W. Higgins Road, Suite 600
Rosemont, Illinois 60018
(847) 923-0900

USER NAME = pmagnelli	DESIGNED JPC	REVISED -
PLOT SCALE = 28"	DRAWN KWB	REVISED -
PLOT DATE = 10/17/2012	CHECKED JPC	REVISED -
	DATE = 10/17/2012	REVISED -

STATE OF ILLINOIS
DEPARTMENT OF TRANSPORTATION

PROPOSED PUMP STATION
PLAN AND SECTION

SCALE:	SHEET NO.	OF SHEETS	STA.	TO STA.
--------	-----------	-----------	------	---------

F.A. RTE.	SECTION	COUNTY	TOTAL SHEETS	SHEET NO.
330	0105 WRS&HB	COOK	605	196
CONTRACT NO. 60G37				
ILLINOIS FED. AID PROJECT				