

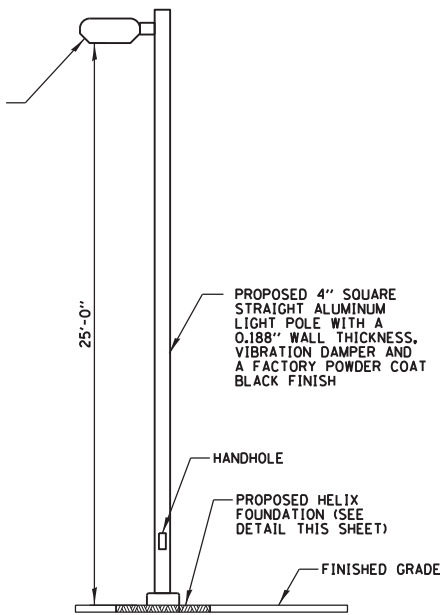
NOTES:

1. INDICATING LIGHTS SHALL BE LED WITH PUSH-TO-TEST FEATURE.

TYPICAL CONTROL LAYOUT

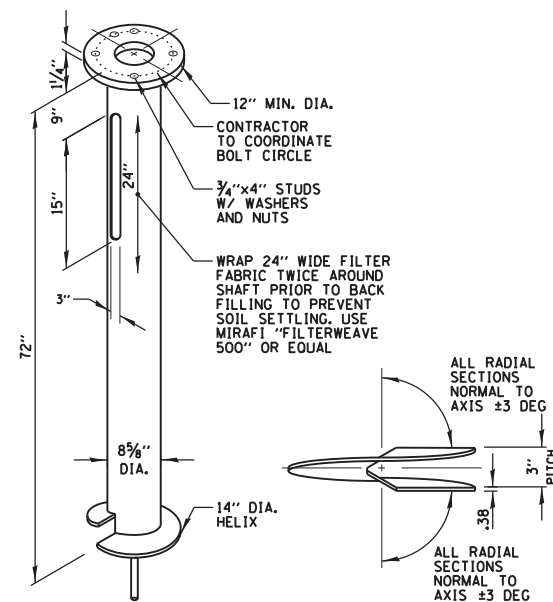
N.T.S.

264W LED SHOEBOX TYPE LUMINAIRE WITH TYPE 5 OPTICS, AND A FACTORY POWDER COAT BLACK FINISH (BETA LED MODEL NO. ARE-EDG-5M-AA-24-D-UL-BK-350-P)



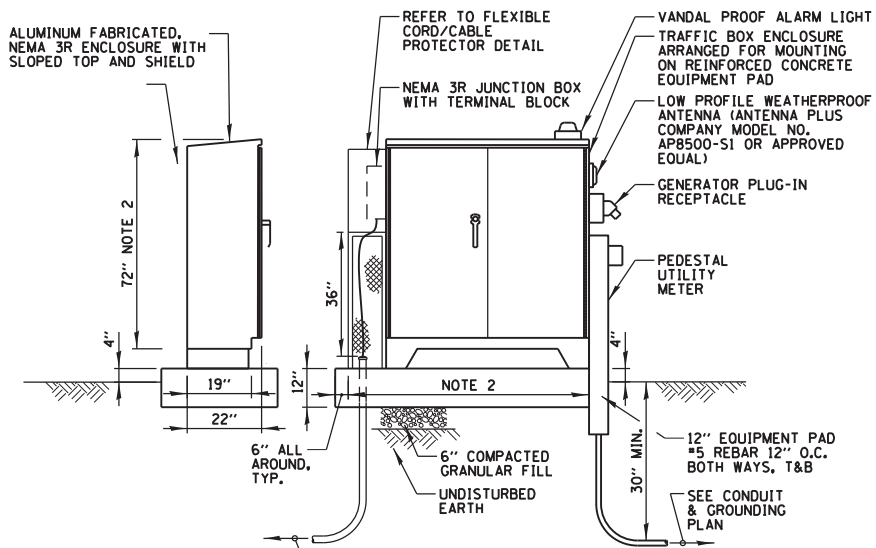
PROPOSED LED SITE LIGHT POLE

N.T.S.



HELIX FOUNDATION

HELIX SIDE VIEW

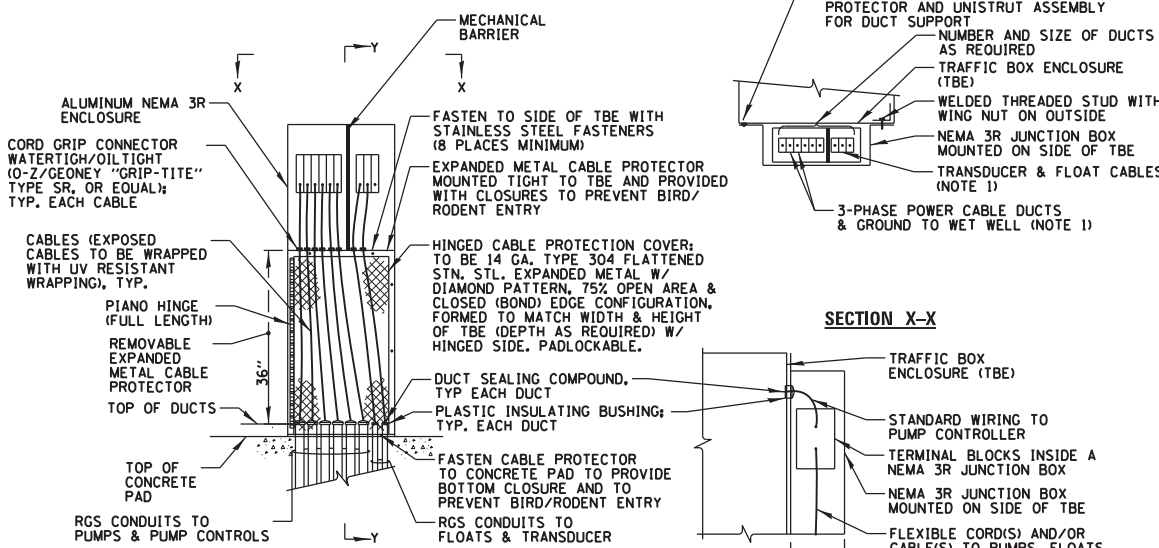


NOTES:

1. ALL CONDUIT TO BE BOTTOM FED.
2. MAX. ANTICIPATED TRAFFIC BOX TO BE AS COMPACT AS POSSIBLE. CONTRACTOR TO COORDINATE. OVERALL SIZE AS REQUIRED.
3. SEE SITE PLAN FOR ORIENTATION.
4. SEE CONDUIT & GROUNDING PLAN FOR CONDUIT INFORMATION.

TRAFFIC BOX ENCLOSURE (TBE)

N.T.S.



NOTES:

1. PROVIDE MECHANICAL BARRIER TO SEPARATE POWER CABLES FROM INTRINSICALLY SAFE CABLES

FLEXIBLE CABLE PROTECTOR DETAIL

N.T.S.

NOTES:

1. FINISH: HOT DIP GALVANIZED PER AASHTO M11 (LATEST REVISION).
2. BASEPLATE TO BE PERPENDICULAR TO SHAFT AXIS (± 1 DEG) AND HOLE CENTERLINE CONCENTRIC ($\pm .188$) TO SHAFT AXIS.
3. STENCIL MIN $1/2$ IN. LETTERS MANUFACTURER'S NUMBER AFTER GALVANIZING.
4. PILOT POINT AND SHAFT AXES TO BE CONCENTRIC (± 125 FIM) AND IN LINE (± 2 DEG).
5. FLAME CUT SLOT PERPENDICULAR TO THE BASEPLATE.
6. PREHEAT, TUMBLEBLAST, HANDGRIND, AND CLEAN BASEPLATE, HELIX, AND PILOT POINT ON ALL WELDED AREAS.
7. FLAMECUT IRREGULARITIES PERMISSIBLE: (1) VALLEYS NOT TO EXCEED $3/8$ IN. BELOW NOMINAL SURFACE LEVEL. (2) PEAKS OR POSITIVE IRREGULARITIES NOT TO EXCEED $1/8$ IN. ABOVE NOMINAL SURFACE LEVEL OR INTERSECTIONS OF NOMINAL SURFACES.
8. MANUFACTURER TO HAVE IN EFFECT INDUSTRY RECOGNIZED WRITTEN QUALITY CONTROL FOR ALL MATERIALS AND MANUFACTURING PROCESSES.
9. ALL MATERIAL IS TO BE NEW, UNUSED AND MILL TRACEABLE MEETING THE FOLLOWING SPECIFICATIONS:

BASEPLATE: ASTM A36-(LATEST REVISION) STRUCTURAL (CONFORM TO AASHTO TECH. BUL. #270)

SHAFT: ASTM A252 (LATEST REVISION) GRADE 2, STEEL PIPE PILES, ALT. MATERIAL: ASTM A53 (LATEST REVISION) TYPE E OR S, GRADE B, STEEL PIPE OR ASTM A500 (LATEST REVISION) GRADE B, STRUCTURAL STEEL TUBING.

HELIX: ASTM A635 (LATEST REVISION) $3/8$ " THICK HOT ROLLED STEEL PLATE OR COIL.

PILOT POINT: ASTM A575 (LATEST REVISION) $1/4$ " DIA. HOT ROLLED STEEL BAR.

BOLTS: 1 " DIA. HOT DIP GALVANIZED STUDS IN ACCORDANCE WITH AASHTO M314 OR ASTM F1554.

10. BASEPLATE IS PERMANENTLY STAMPED WITH MANUFACTURER'S IDENTIFICATION "ABC" IN $1/2$ " LETTERS AND DATE CODE IN $1/4$ " LETTERS.

LED SITE LIGHT POLE METAL FOUNDATION DETAIL

N.T.S.

USER NAME = pmagnelli	DESIGNED JPC	REVISED -
PLOT SCALE = 28"	DRAWN KWB	REVISED -
PLOT DATE = 10/17/2012	CHECKED JPC	REVISED -
	DATE = 10/17/2012	REVISED -

F.A. RTE.	SECTION	COUNTY	TOTAL SHEETS	SHEET NO.
330	0105 WRS&HB	COOK	605	200
CONTRACT NO. 60G37				
ILLINOIS FED. AID PROJECT				