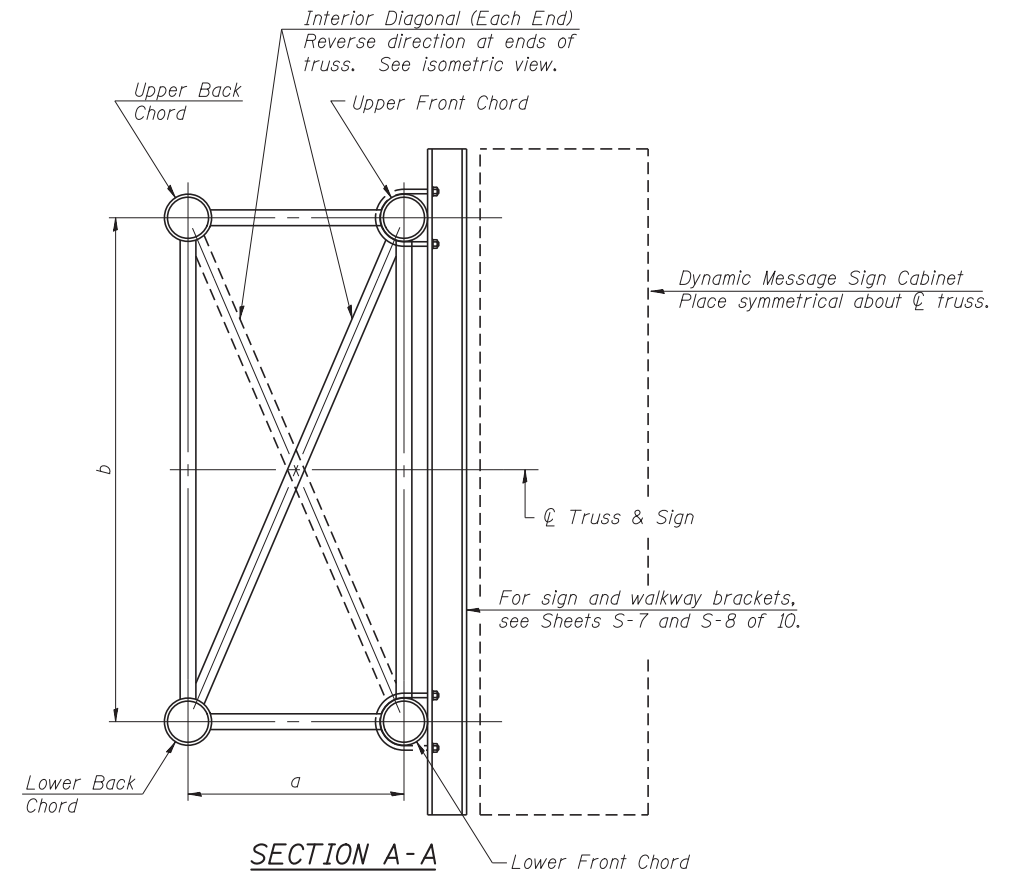
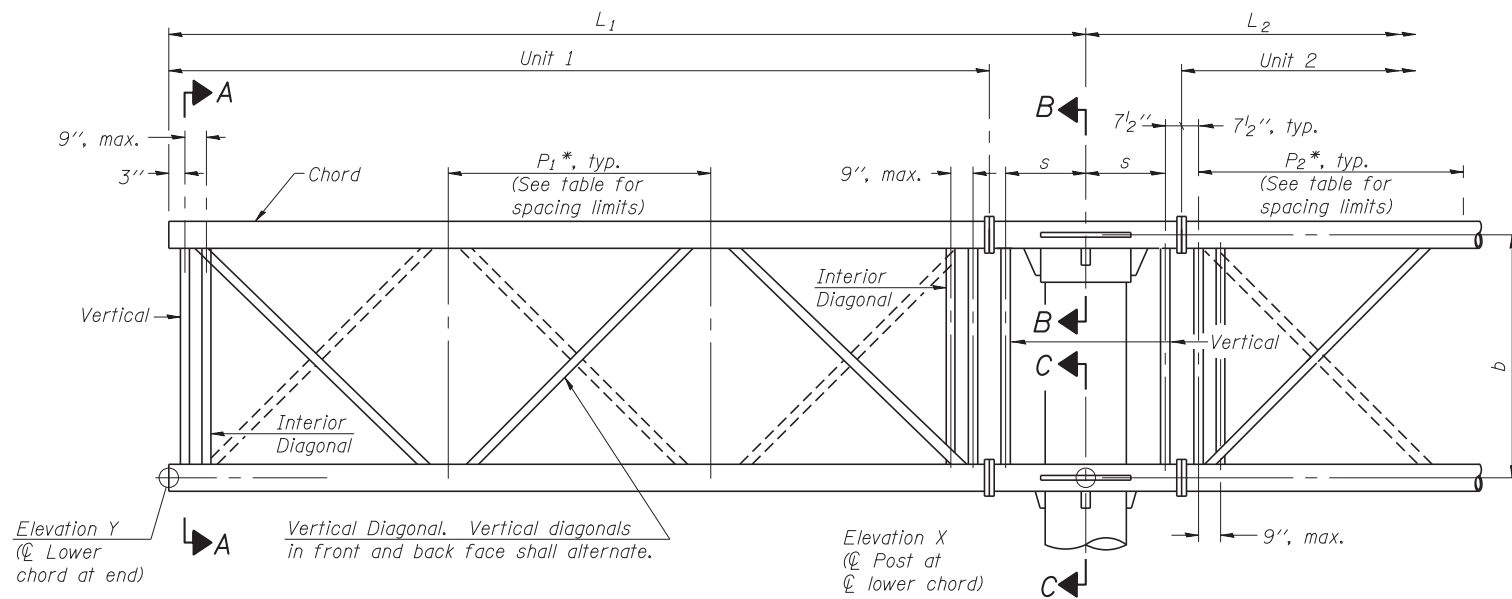


Note:  
There are twice as many horizontal diagonals as there are vertical diagonals.

**PLAN**  
(Walkway not shown)



**SECTION A-A**



**ELEVATION**

(Sign and walkway omitted for clarity)

**TYPICAL TRUSS UNIT**

For Section B-B and Section C-C, see Base Sheet OSF-A-3

**TRUSS UNIT TABLE**

Truss Type	Dimension "a"	Dimension "b"	Dimension "s"	Limits for Panel Spacing (P)*	Up. & Low. Chord		Verticals; Horizontals; Vertical Horizontals; and Interior Diagonals	
					O.D.	Wall		
III-F-A	36"	84"	21"	48" min. to 66" max.	7"	3/8"	3 1/2"	3/8"

$$*P = \frac{L-s-1'-6''}{\# \text{ Panels}}$$

Structure Number	Station	Truss Type	L <sub>1</sub>	L <sub>2</sub>	Number of Panels Unit 1	Panel Length (P <sub>1</sub> )*	Number of Panels Unit 2	Panel Length (P <sub>2</sub> )*
1F016U045R004.9	58+85	III-F-A	16'-0"	16'-0"	3	4'-3"	3	4'-3"

OSF-A-2-DMS 9-15-11



USER NAME = lkalite	DESIGNED PCA	REVISED
CHECKED MRI	REVISIONS	
PLOT SCALE = 0.8833331	DRAWN LK	REVISIONS
PLOT DATE = 09-OCT-2012	DATE 10/19/12	REVISIONS

STATE OF ILLINOIS  
DEPARTMENT OF TRANSPORTATION

BUTTERFLY SIGN STRUCTURES - ALTERNATE TRUSS DETAILS FOR DMS  
ALUMINUM TRUSS & STEEL POST

SHEET NO. S-2 OF 10 SHEETS

F.A. RTE.	SECTION	COUNTY	TOTAL SHEETS	SHEET NO.
330	0105 WRS&HB	COOK	605	225
CONTRACT NO. 60G37				

ILLINOIS FED. AID PROJECT