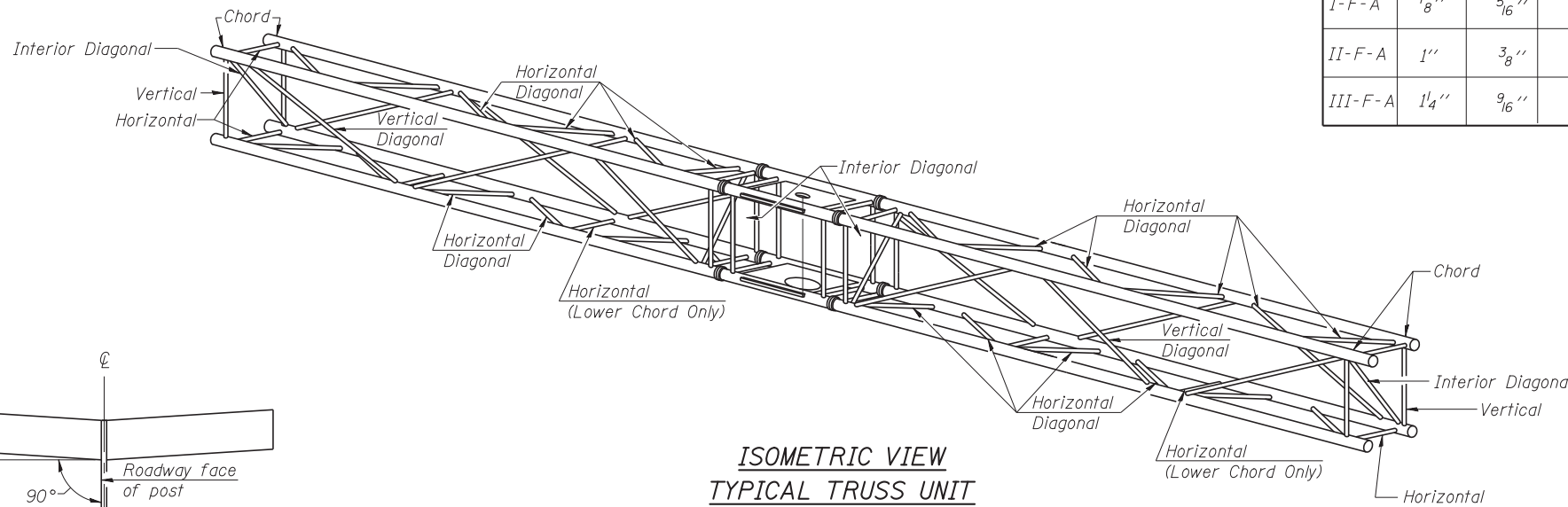


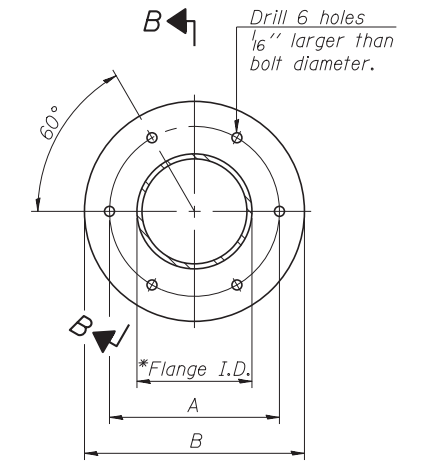
**SHOP CAMBER TABLE**

Unit Length $L_1$ or $L_2$	Shop Camber at End
15'	1 1/2"
16'-17'	1 3/4"
18'-20'	2"
21'-22'	2 1/4"
23'-25'	2 1/2"
26'-27'	2 3/4"
28'-30'	3"
31'-32'	3 1/4"
33'-35'	3 1/2"

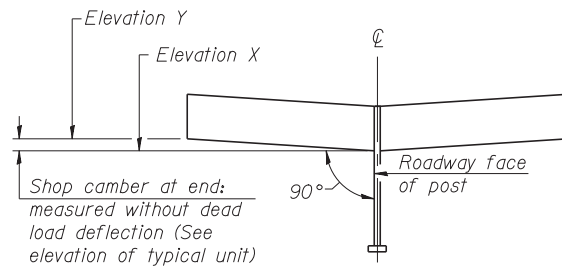


**ISOMETRIC VIEW  
TYPICAL TRUSS UNIT**  
ASTM B221 Alloy 6061 Temper T6

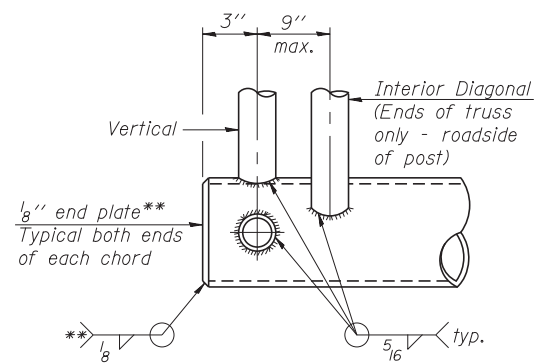
Truss Type	Bolts		Weld Sizes		A	B
	Dia.	W	W <sub>1</sub>			
I-F-A	7/8"	5/16"	1/4"		8 3/4"	11 3/4"
II-F-A	1"	3/8"	1/4"		11"	14 1/2"
III-F-A	1 1/4"	9/16"	5/16"		11 1/2"	15"



**SPLICING FLANGE**  
ASTM b221, Alloy 6061-T6  
or ASTM B209, Alloy 6061-T651  
\* To fit O.D. of Chord with maximum gap of 1/16".

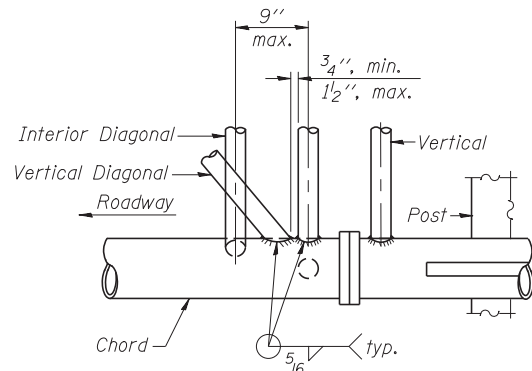


**CAMBER DIAGRAM**  
(For Fabrication Only)

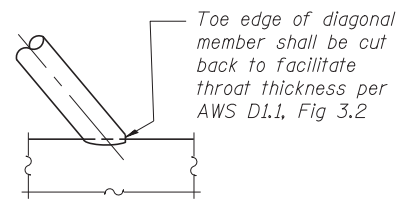


**BUTTERFLY END JOINT DETAIL**

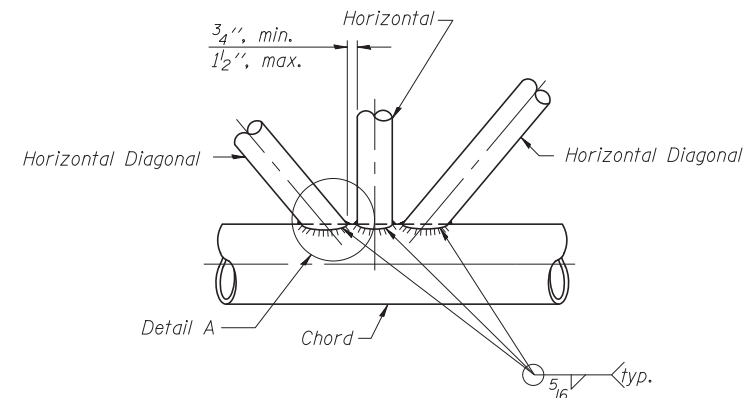
\*\* Contractor may alternatively use standard aluminum drive-fit cap to close ends.



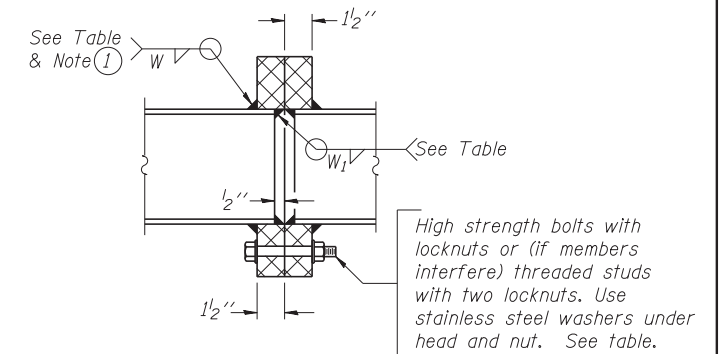
**POST END JOINT DETAIL**



**DETAIL A**



**TRUSS INTERIOR JOINT DETAIL**



**SECTION B-B**

① Splicing Flanges shall be attached to each truss unit with the truss shop assembled to camber shown. Truss units shall be in proper alignment and flange surfaces shall be shop bolted into full contact before welding. Sufficient external welds or tacks shall be made to secure flanges until remaining welds are made after disassembly. Adjacent flanges shall be "match marked" to insure proper field assembly.

OSF-A-2A

9-15-11



USER NAME = lkalite	DESIGNED PCA	REVISED
CHECKED MRI		REVISED
PLOT SCALE = 0.883333x1	DRAWN LK	REVISED
PLOT DATE = 09-OCT-2012	DATE 10/19/12	REVISED

STATE OF ILLINOIS  
DEPARTMENT OF TRANSPORTATION

BUTTERFLY SIGN STRUCTURES - TRUSS DETAILS  
ALUMINUM TRUSS & STEEL POST

F.A. RTE.	SECTION	COUNTY	TOTAL SHEETS	SHEET NO.
330	0105 WRS&HB	COOK	605	226
CONTRACT NO. 60G37				

SHEET NO. S-3 OF 10 SHEETS

ILLINOIS FED. AID PROJECT