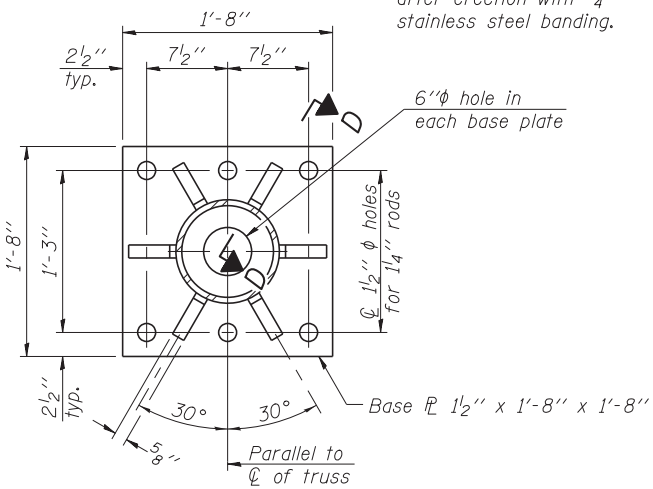
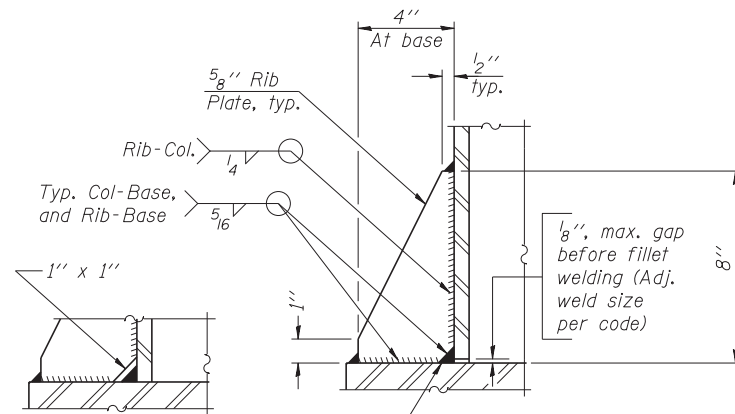


DETAIL B

Ribs shall be cut to fit slope of pipe.



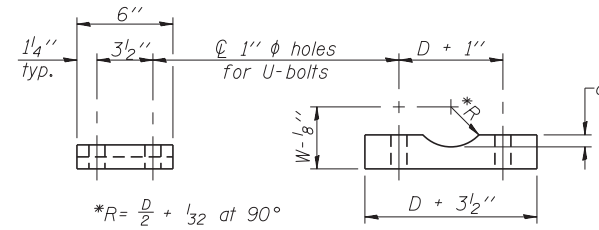
SECTION B-B



SECTION D-D

** Alternate detail if welding col. to base plate first, then snip inside corner of ribs. Terminate weld on rib 1/4" from snip.

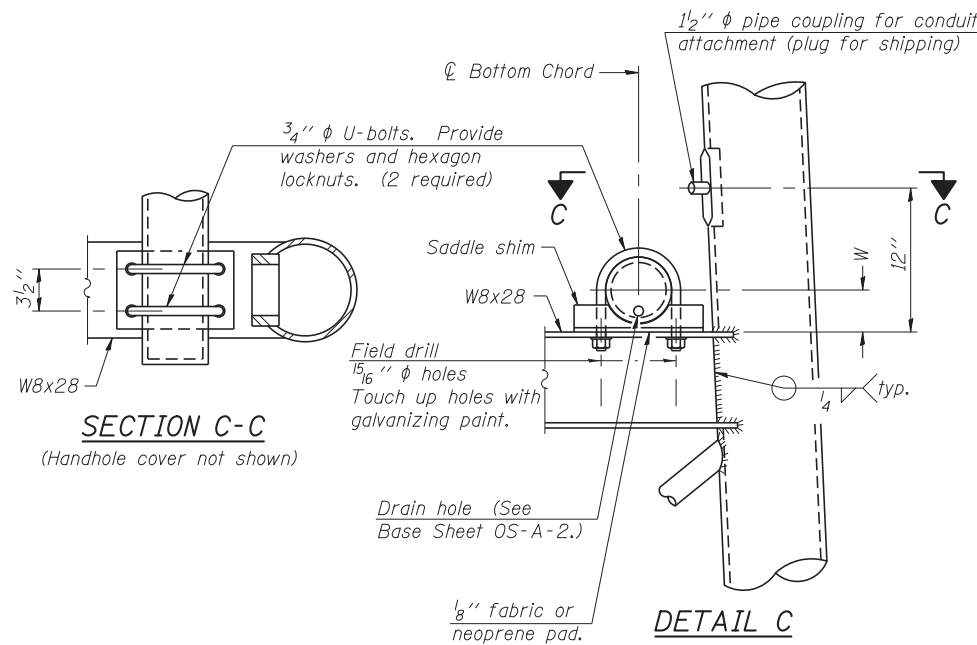
No snip req'd. at rib inside corner if placed before col. to base plate welding.**



SADDLE SHIM DETAIL

ASTM B26 Alloy 356-F or ASTM B209 Alloy 6061-T651 (4 required per sign truss)

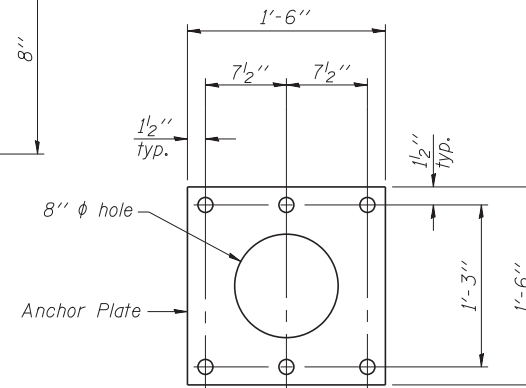
Truss Chord Nominal Dia.	a
5"	3/4"
5 1/2"	13/16"
6"	7/8"
6 1/2"	15/16"
7"	1"



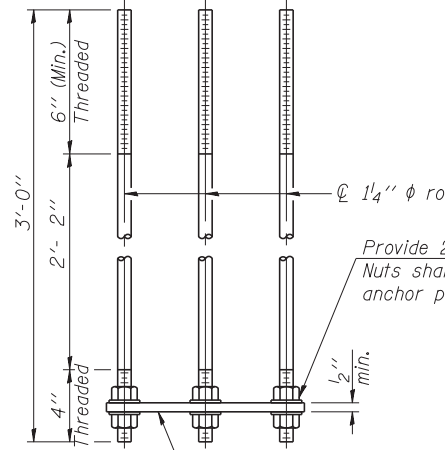
SECTION C-C

(Handhole cover not shown)

DETAIL C



ϕ 1 3/8" ϕ holes

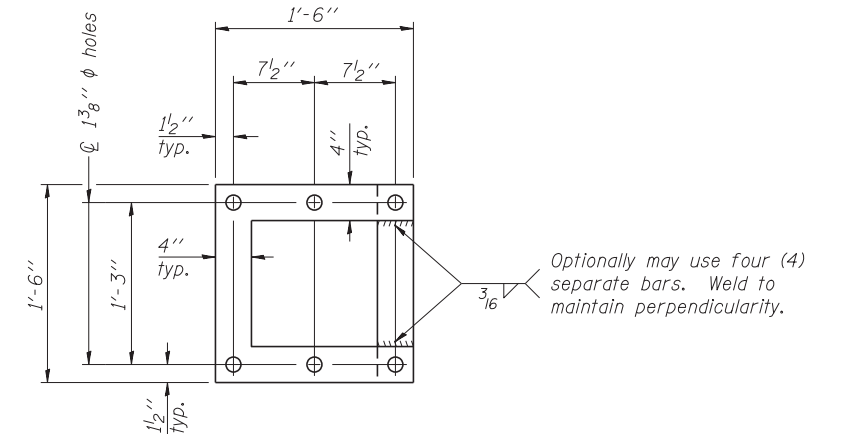


ANCHOR ROD DETAIL

Spread Footing Foundation

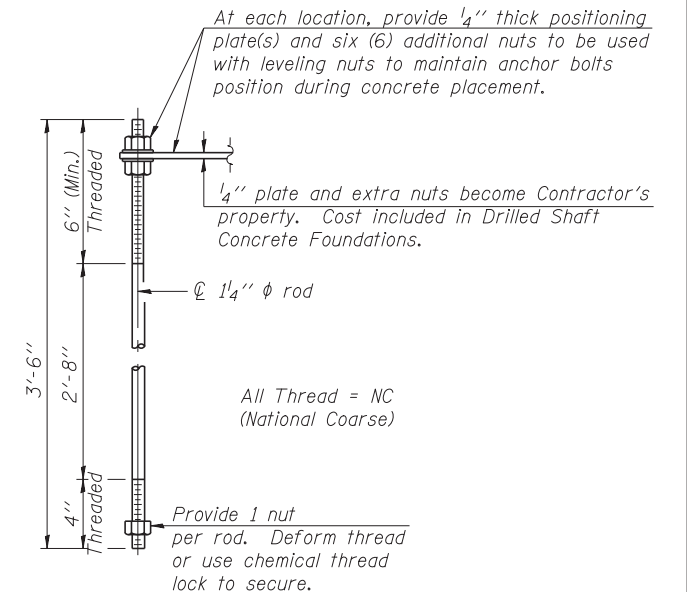
Provide 2 uncoated nuts per rod. Nuts shall be "snug tight" against anchor plate.

All Thread = NC (National Coarse)



POSITIONING PLATE(S)

Optionally may use four (4) separate bars. Weld to maintain perpendicularity.



ANCHOR ROD DETAIL

Drilled Shaft Foundation

Anchor rods shall conform to ASTM F1554 Grade 105. Galvanize upper 12" minimum per AASHTO M232. No welding shall be permitted on rods.

10" ϕ PIPE SUPPORT FRAME DETAILS

OS-A-6A

1-20-11

HNTB

USER NAME = lkalito	DESIGNED PCA	REVISED
PLOT SCALE = 0.883333:1	CHECKED MRI	REVISED
PLOT DATE = 09-OCT-2012	DRAWN LK	REVISED
	DATE 10/19/12	REVISED

DESIGNED PCA	REVISED
CHECKED MRI	REVISED
DRAWN LK	REVISED
DATE 10/19/12	REVISED

STATE OF ILLINOIS
DEPARTMENT OF TRANSPORTATION

OVERHEAD SIGN STRUCTURES
SUPPORT FRAME DETAILS - ALUMINUM TRUSS

SHEET NO. S-6 OF 10 SHEETS

F.A. RTE.	SECTION	COUNTY	TOTAL SHEETS	SHEET NO.
330	0105 WRS&HB	COOK	605	247
				CONTRACT NO. 60G37
ILLINOIS FED. AID PROJECT				