

SCHEDULE OF QUANTITIES

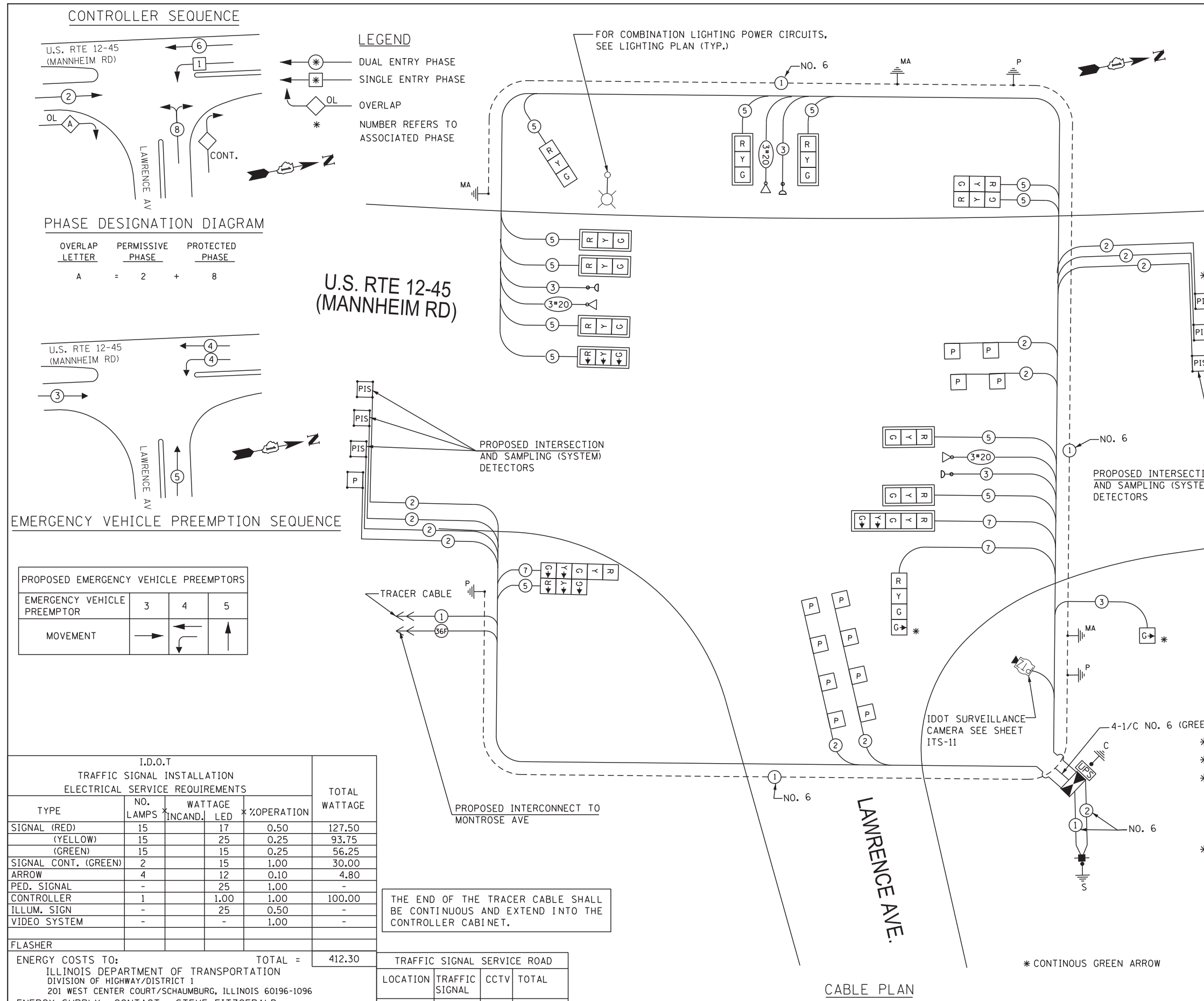
NO.	PAY ITEM DESCRIPTION	UNIT	MANHEIM RD / LAWRENCE AV
1	SIGN PANEL - TYPE 1	SQ FT	33
2	SIGN PANEL - TYPE 2	SQ FT	16.25
3	UNDERGROUND CONDUIT, GALVANIZED STEEL, 2" DIA.	FOOT	739
4	UNDERGROUND CONDUIT, GALVANIZED STEEL, 2 1/2" DIA.	FOOT	52
5	UNDERGROUND CONDUIT, GALVANIZED STEEL, 3" DIA.	FOOT	241
6	UNDERGROUND CONDUIT, GALVANIZED STEEL, 4" DIA.	FOOT	608
7	HANDHOLE	EACH	4
8	HEAVY-DUTY HANDHOLE	EACH	2
9	DOUBLE HANDHOLE	EACH	2
10	TRANSCIVER - FIBER OPTIC	EACH	1
11	ELECTRIC CABLE IN CONDUIT, SIGNAL NO. 14 3C	FOOT	1,027
12	ELECTRIC CABLE IN CONDUIT, SIGNAL NO. 14 5C	FOOT	3,823
13	ELECTRIC CABLE IN CONDUIT, SIGNAL NO. 14 7C	FOOT	496
14	ELECTRIC CABLE IN CONDUIT, LEAD-IN, NO. 14 1 PAIR	FOOT	3,684
15	ELECTRIC CABLE IN CONDUIT, SERVICE, NO. 6 2C	FOOT	43
16	ELECTRIC CABLE IN CONDUIT, EQUIPMENT GROUNDING CONDUCTOR, NO. 6 1C	FOOT	1,281
17	TRAFFIC SIGNAL POST, GALVANIZED STEEL 14 FT.	EACH	1
18	TRAFFIC SIGNAL POST, GALVANIZED STEEL 16 FT.	EACH	1
19	STEEL MAST ARM ASSEMBLY AND POLE 20 FT.	EACH	1
20	STEEL MAST ARM ASSEMBLY AND POLE 46 FT.	EACH	1
21	STEEL COMBINATION MAST ARM ASSEMBLY AND POLE 58 FT.	EACH	1
22	CONCRETE FOUNDATION, TYPE A	FOOT	12
23	CONCRETE FOUNDATION, TYPE C	FOOT	4
24	CONCRETE FOUNDATION, TYPE E 30-INCH DIAMETER	FOOT	10
25	CONCRETE FOUNDATION, TYPE E 36-INCH DIAMETER	FOOT	13
26	CONCRETE FOUNDATION, TYPE E 42-INCH DIAMETER	FOOT	21
27	SIGNAL HEAD, LED, 1-FACE, 1-SECTION, BRACKET MOUNTED	EACH	1
28	SIGNAL HEAD, LED, 1-FACE, 3-SECTION, MAST-ARM MOUNTED	EACH	8
29	SIGNAL HEAD, LED, 1-FACE, 3-SECTION, BRACKET MOUNTED	EACH	1
30	SIGNAL HEAD, LED, 1-FACE, 4-SECTION, BRACKET MOUNTED	EACH	1
31	SIGNAL HEAD, LED, 1-FACE, 5-SECTION, MAST-ARM MOUNTED	EACH	1
32	SIGNAL HEAD, LED, 2-FACE, 3-SECTION, BRACKET MOUNTED	EACH	1
33	SIGNAL HEAD, LED, 2-FACE, 1-3 SECTION, 1-5 SECTION, BRACKET MOUNTED	EACH	1
34	TRAFFIC SIGNAL BACKPLATE LOUVERED, ALUMINUM	EACH	9
35	INDUCTIVE LOOP DETECTOR	EACH	11
36	PREFORMED DETECTOR LOOP	FOOT	732
37	TEMPORARY TRAFFIC SIGNAL INSTALLATION	EACH	1
38	RELOCATE EXISTING EMERGENCY VEHICLE PRIORITY SYSTEM, DETECTOR UNIT	EACH	3
39	RELOCATE EXISTING EMERGENCY VEHICLE PRIORITY SYSTEM, PHASING UNIT	EACH	1
40	REMOVE EXISTING TRAFFIC SIGNAL EQUIPMENT	EACH	1
41	REMOVE EXISTING HANDHOLE	EACH	8
42	REMOVE EXISTING CONCRETE FOUNDATION	EACH	10
43	EMERGENCY VEHICLE PRIORITY SYSTEM LINE SENSOR CABLE, NO. 20 3/C	FOOT	948
44	SERVICE INSTALLATION (SPECIAL)	EACH	1
45	FULL-ACTUATED CONTROLLER AND TYPE IV CABINET, SPECIAL	EACH	1
46	UNINTERRUPTABLE POWER SUPPLY, SPECIAL	EACH	1
47	TEMPORARY TRAFFIC SIGNAL TIMING	EACH	1

** 100% COST TO VILLAGE OF SCHILLER PARK.

NOTE:
THE TRAFFIC SIGNAL CONTROLLER EQUIPMENT FOR THIS PROJECT SHALL BE "EAGLE" TO MATCH THE EXISTING ADJACENT SYSTEM.

TS-20

F.A.P. RTE.	SECTION	COUNTY	TOTAL SHEETS	SHEET NO.
330	0105 WRS&HB	COOK	605	279
ILLINOIS FED. AID PROJECT			CONTRACT NO. 60G37	

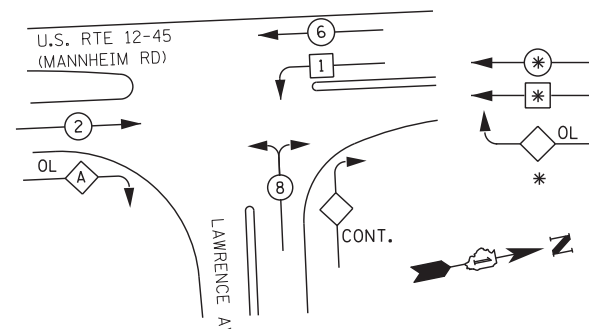


CABLE PLAN

* CONTINUOUS GREEN ARROW

THE END OF THE TRACER CABLE SHALL BE CONTINUOUS AND EXTEND INTO THE CONTROLLER CABINET.

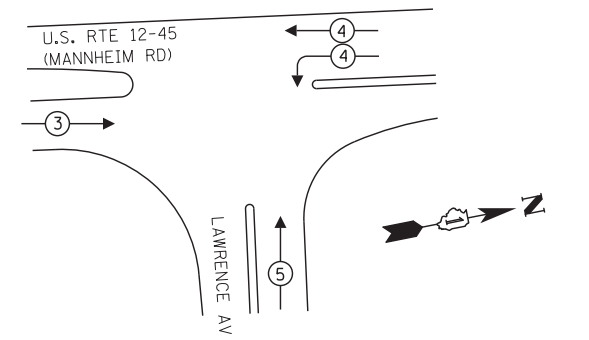
CONTROLLER SEQUENCE



LEGEND
 * DUAL ENTRY PHASE
 * SINGLE ENTRY PHASE
 OL OVERLAP
 * NUMBER REFERS TO ASSOCIATED PHASE

PHASE DESIGNATION DIAGRAM

OVERLAP LETTER	PERMISSIVE PHASE	PROTECTED PHASE
A	= 2	+ 8



EMERGENCY VEHICLE PREEMPTION SEQUENCE

EMERGENCY VEHICLE PREEMPTOR	3	4	5
MOVEMENT	→	↶	↷

TYPE	NO. LAMPS	WATTAGE INCAND.	WATTAGE LED	% OPERATION	TOTAL WATTAGE
SIGNAL (RED)	15	17	0.50	127.50	
(YELLOW)	15	25	0.25	93.75	
(GREEN)	15	15	0.25	56.25	
SIGNAL CONT. (GREEN)	2	15	1.00	30.00	
ARROW	4	12	0.10	4.80	
PED. SIGNAL	-	25	1.00	-	
CONTROLLER	1	1.00	1.00	100.00	
ILLUM. SIGN	-	25	0.50	-	
VIDEO SYSTEM	-	-	1.00	-	
FLASHER	-	-	-	-	-
TOTAL =					412.30

ENERGY COSTS TO: ILLINOIS DEPARTMENT OF TRANSPORTATION
 DIVISION OF HIGHWAY/DISTRICT 1
 201 WEST CENTER COURT/SCHAUMBURG, ILLINOIS 60196-1096
 ENERGY SUPPLY CONTACT: STEVE FITZGERALD
 PHONE: (708) 235-2327
 COMPANY: ComEd

LOCATION	TRAFFIC SIGNAL	CCTV	TOTAL
MANHEIM/LAWRENCE AVE.	0.42KW	0.5KW	0.92KW

DELTA ENGINEERING GROUP, LLC
 FILE NAME = c:\cadd\lib\pwr\mamuocd2\pwgreat.lakes\dms47844\016037-sht.ts20.dgn

USER NAME = rnamucod	DESIGNED JA	REVISED -
PLOT SCALE = *SCALE*	DRAWN RM	REVISED -
PLOT DATE = 11/29/2012	CHECKED HS	REVISED -
	DATE 10/19/2012	REVISED -

STATE OF ILLINOIS
 DEPARTMENT OF TRANSPORTATION

SCHEDULE OF QUANTITIES, CABLE PLAN, PHASE DESIGNATION
 DIAGRAM AND EMERGENCY VEHICLE PREEMPTION SEQUENCE
 US RTE 12-45 (MANNHEIM RD) AND LAWRENCE AVE.

SCALE: SHEET NO. OF SHEETS STA. TO STA.