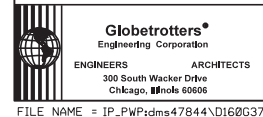


NOTE:
 1. TEMPORARY LIGHT INSTALLED FOR STAGE 3 TRAFFIC ONLY AND TO BE REMOVED AFTER PROPOSED LIGHT POLES BEEN INSTALLED AND FULLY FUNCTIONAL.



E-14



USER NAME = mks01r	DESIGNED LLS/CD	REVISED -
PLOT SCALE = 50:1	DRAWN MMK/RL	REVISED -
PLOT DATE = 16-OCT-2012	CHECKED CD	REVISED -
	DATE 10/19/12	REVISED -

STATE OF ILLINOIS
 DEPARTMENT OF TRANSPORTATION

LIGHTING REMOVAL PLAN
 STAGE 3
 MANNHEIM ROAD

SCALE: 1" = 50' SHEET NO. 3 OF 5 SHEETS STA. 68+00.00 TO STA. 96+00.00

F.A.P. RTE. 330	SECTION 0105 WRS&HB	COUNTY COOK	TOTAL SHEETS 605	SHEET NO. 300
CONTRACT NO. 60G37				ILLINOIS FED. AID PROJECT