

GENERAL NOTES

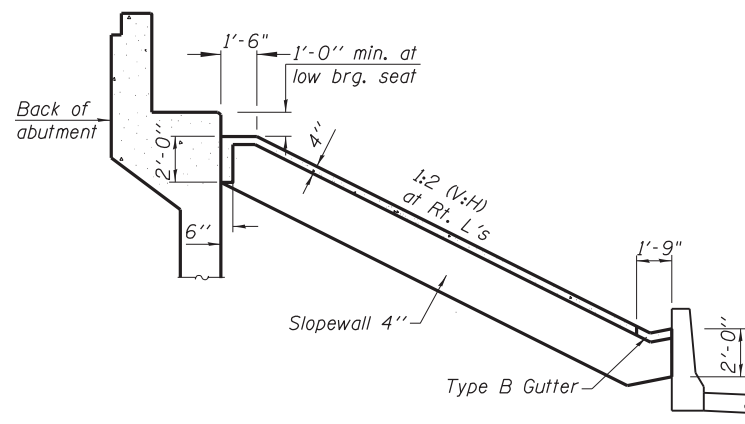
- Fasteners shall be ASTM 325 Type 1, mechanically galvanized bolts. Bolts $\frac{3}{4}$ in. dia., holes $\frac{13}{16}$ in. dia., unless otherwise noted.
- Calculated weight of Structural Steel = 306,990 lbs Grade 50
29,800 lbs Grade 36
- No field welding is permitted except as specified in the contract documents.
- Reinforcement bars designated (E) shall be epoxy coated.
- Concrete Sealer shall be applied to the designated areas of the exposed surfaces of backwall, beam seat and front face of abutment stem.
- The Organic Zinc Rich Primer / Epoxy / Urethane Paint System shall be used for painting of new structural steel except where otherwise noted. The entire system shall be shop applied, with the exception that masked off connection surfaces, field installed fasteners and damaged areas shall be touched up in the field. The color of the final finish coat for all interior steel surfaces shall be Gray, Munsell No. 5B 7/1. The color of the final finish coat for the exterior and bottom flange of the fascia beams shall be Interstate Green Munsell No. 7.5G 4/8.
- Slipforming of the parapet is not allowed.
- If the Contractor elects to use cantilever forming brackets on the exterior beams or girders, the brackets shall be placed at the same locations as required for the hardwood blocks in Article 503.06(b) of the Standard Specifications. If additional cantilever forming brackets are required, hardwood blocking shall be wedged between the exterior and first interior beam at each of these additional bracket locations.

INDEX OF SHEETS

- S-1 General Plan and Elevation
- S-2 Index, General Notes and Total Bill of Material
- S-3 Substructure Layout
- S-4 & S-5 Stage Construction
- S-6 Deck Elevations Plan
- S-7 & S-8 Top of Deck Elevation
- S-9 Top of Approach Slab Elevation
- S-10 Deck Plan and Cross Section
- S-11 Superstructure Details
- S-12 to S-15 Bridge Approach Slab Details
- S-16 Preformed Joint Strip Seal
- S-17 Framing Plan Details
- S-18 Diaphragm Details
- S-19 Bearing Details
- S-20 South Abutment Plan and Elevation
- S-21 South Abutment Details
- S-22 North Abutment Plan and Elevation
- S-23 North Abutment Details
- S-24 Bar Splicer Assembly Details
- S-25 & S-26 Boring Logs

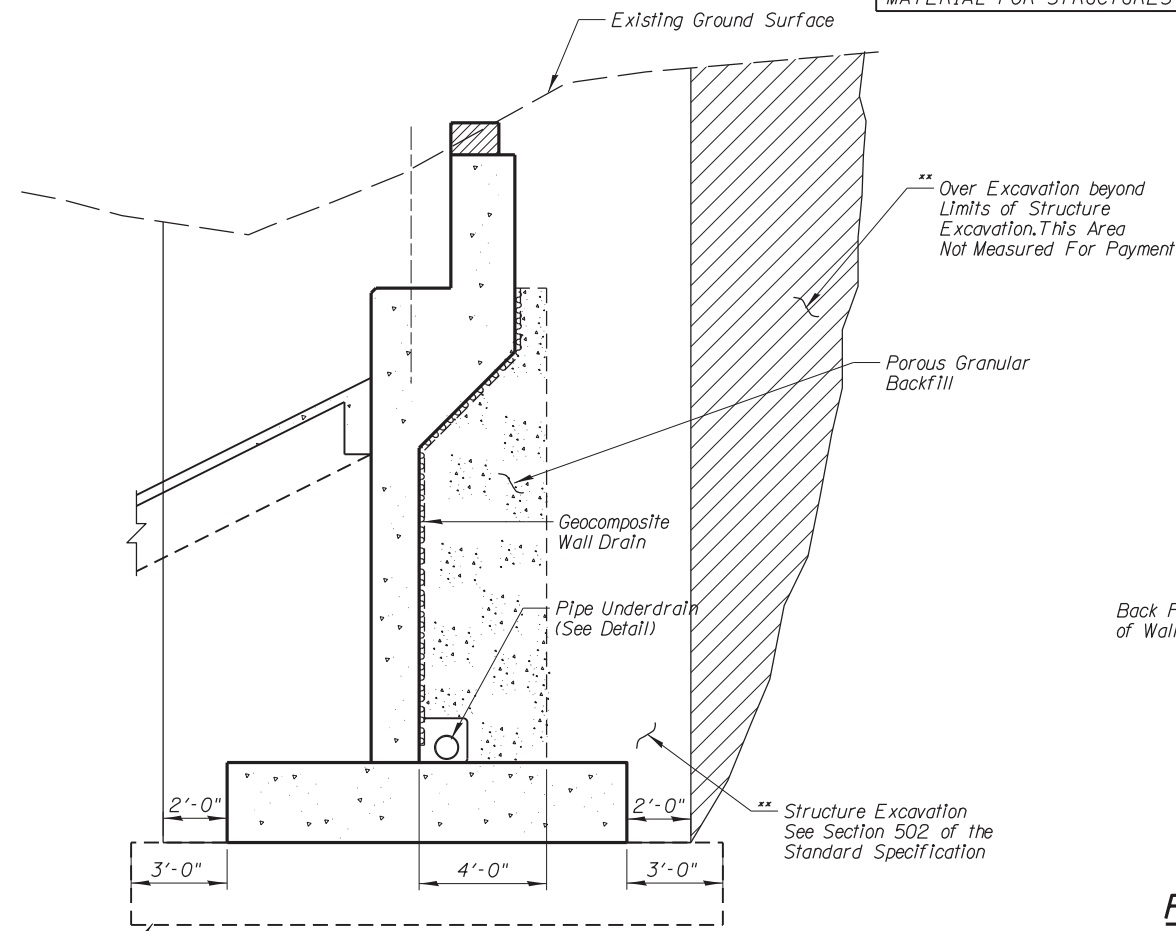
**N.B. MANNHEIM ROAD BRIDGE
TOTAL BILL OF MATERIAL**

ITEM	UNIT	SUPER.	SUB.	TOTAL
POROUS GRANULAR BACKFILL	CU YD	—	1,115	1,115
STRUCTURE EXCAVATION	CU YD	—	3,607	3,607
CONCRETE STRUCTURES	CU YD	70.1	722.7	792.8
CONCRETE SUPERSTRUCTURE	CU YD	597.0	18.9	615.9
BRIDGE DECK GROOVING	SQ YD	1,600	—	1,600
PROTECTIVE COAT	SQ YD	1,786	—	1,786
ERECTING STRUCTURAL STEEL	L SUM	0.60	—	0.60
STUD SHEAR CONNECTORS	EACH	5,652	—	5,652
REINFORCEMENT BARS, EPOXY COATED	POUND	156,960	68,330	225,290
BAR SPLICERS	EACH	222	363	585
SLOPE WALL 4 INCH	SQ YD	—	767	767
NAME PLATES	EACH	1	—	1
PREFORMED JOINT STRIP SEAL	FOOT	219	—	219
ERECTING ELASTOMERIC BEARING ASSEMBLY, TYPE I	EACH	12	—	12
ANCHOR BOLTS, 1"	EACH	—	24	24
ANCHOR BOLTS, 1/4"	EACH	—	24	24
CONCRETE SEALER	SQ FT	—	1,531	1,531
GEOCOMPOSITE WALL DRAIN	SQ YD	—	552	552
PIPE UNDERDRAINS FOR STRUCTURES 6"	FOOT	—	277	277
TEMPORARY SOIL RETENTION SYSTEM	SQ FT	—	4,020	4,020
REMOVAL AND DISPOSAL OF UNSUITABLE MATERIAL FOR STRUCTURES	CU YD	—	586	586



Note: Slope wall shall be reinforced with welded wire fabric, 6 in. x 6 in. W4.0 x W4.0, weighing 58 lbs. per 100 sq. ft.

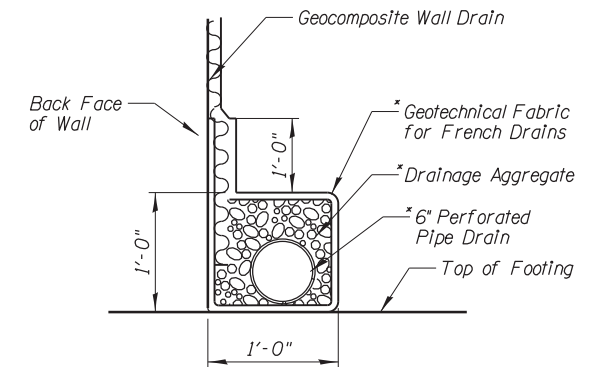
**SECTION THRU
CONCRETE SLOPEWALL**



Limits of Removal and Unsuitable Material

TYPICAL SECTION THRU ABUTMENT

Pipe Underdrain Behind N. Abutment Will Be Connected To The Drainage Structure at N.E. of The N.B. Bridge.
Pipe Underdrain Behind S. Abutment Will Be Connected To The Drainage Structure at S.E. of The N.B. Bridge.



PIPE UNDERDRAIN DETAIL

- * Included in the cost of "Pipe Underdrains for Structures".
- ** Backfill Remainder of Structure Excavation and Over Excavation with Same Material Specified for Roadway Embankment.

N:\ROSEMONT\11000\CADD_Sheets\0167943-0168037-002.Creo.dwg

CHRISTOPHER B. BURKE ENGINEERING, LTD.
8575 W. Higgins Road, Suite 600
Rosemont, Illinois 60018
(847) 924-6500

USER NAME =	DESIGNED - MM	REVISED
	CHECKED - JMB	REVISED
PLOT SCALE =	DRAWN - PDR	REVISED
PLOT DATE =	CHECKED - MM	REVISED

**STATE OF ILLINOIS
DEPARTMENT OF TRANSPORTATION**

**GENERAL NOTES & BILL OF MATERIAL
NB MANNHEIM ROAD BRIDGE - STRUCTURE NO. 016-7943**

SHEET NO. S-2 OF S-26 SHEETS

F.A. RTE.	SECTION	COUNTY	TOTAL SHEETS	SHEET NO.
330	0105 WRS&HB	COOK	605	338
CONTRACT NO. 60G37				
ILLINOIS FED. AID PROJECT				