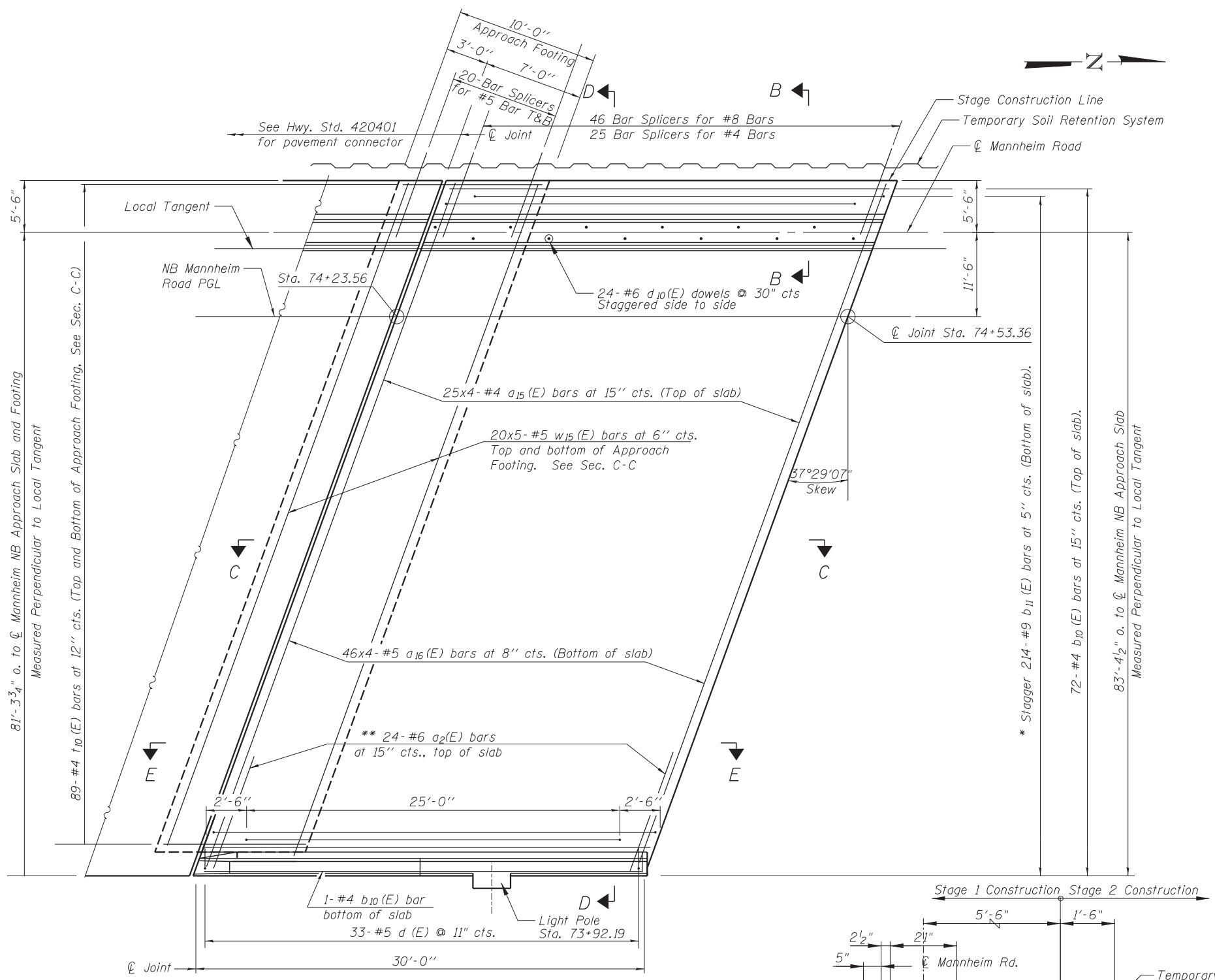


Notes:
See sheet S-15 of S-26 for Sections C-C & D-D and View E-E.
a₁₅(E) and a₁₆(E) bar spacings measured along ϕ Rdwy.

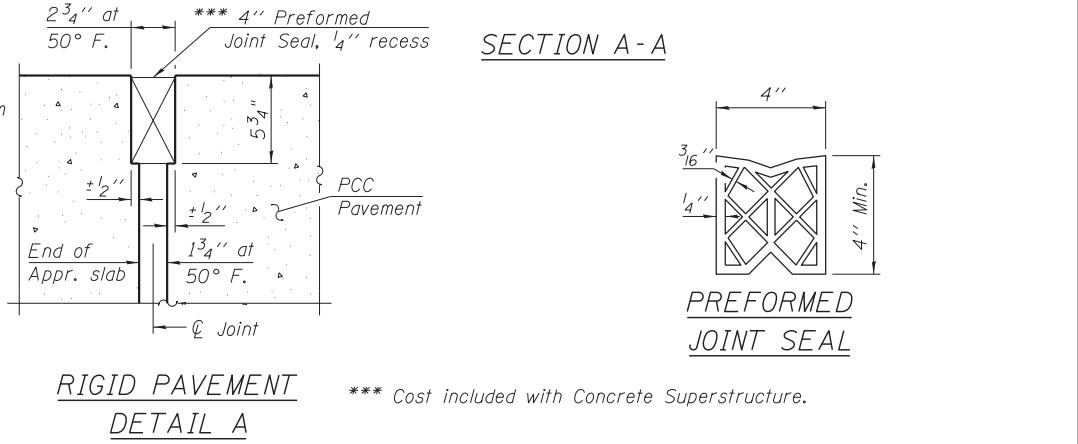
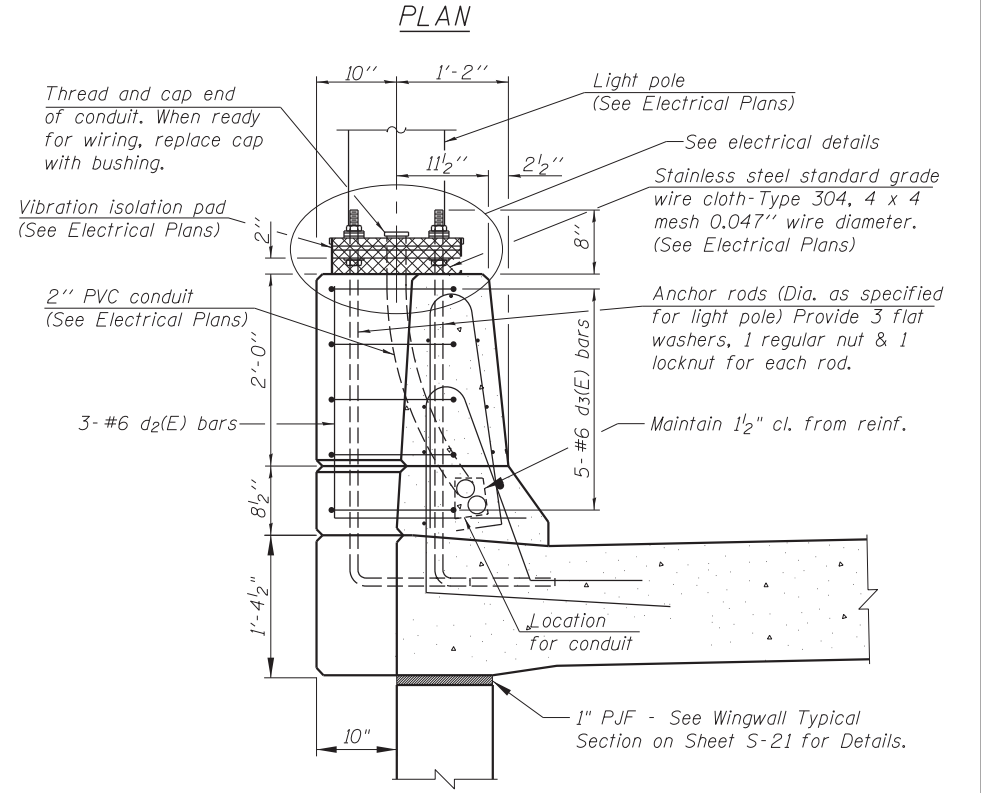
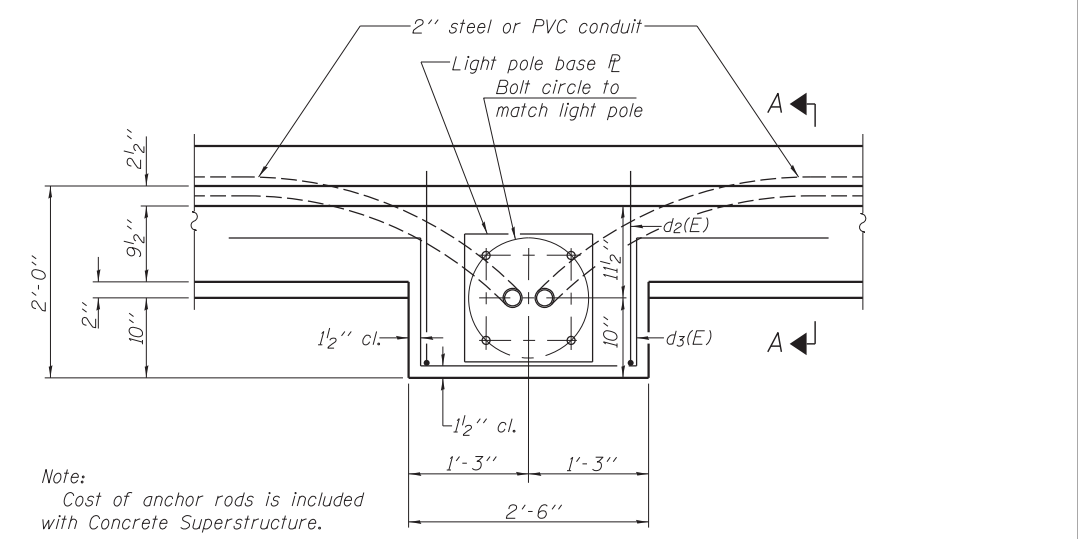
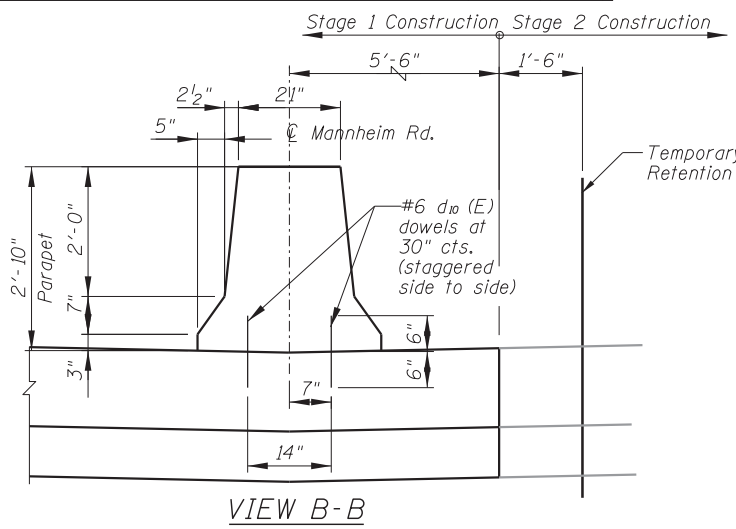


PLAN

* Tilt #9 b₁₁(E) bars as required to maintain clearance.
** Space between a(E) bars, typ. each parapet.

MINIMUM BAR LAP

#4 bar	= 2'-3"
#5 bar	= 3'-3"
#8 bar	= 5'-2"



N:\ROSEMONT\11000\CADD_Sheets\0167943-D160C37-014_NBSAppr-slab.dgn
 CHRISTOPHER B. BURKE ENGINEERING, LTD.
 9575 W. Higgins Road, Suite 600
 Rosemont, Illinois 60018
 (847) 922-2500

USER NAME =	DESIGNED - MM	REVISED
PLOT SCALE =	CHECKED - JMB	REVISED
PLOT DATE =	DRAWN - PDR	REVISED
	CHECKED - MM	REVISED

**STATE OF ILLINOIS
DEPARTMENT OF TRANSPORTATION**

**BRIDGE SOUTH APPROACH SLAB DETAILS
NB MANNHEIM ROAD BRIDGE - STRUCTURE NO. 016-7943**

F.A. RTE.	SECTION	COUNTY	TOTAL SHEETS	SHEET NO.
330	0105 WRS&HB	COOK	605	350
CONTRACT NO. 60G37				

ILLINOIS FED. AID PROJECT

SHEET NO. S-14 OF S-26 SHEETS