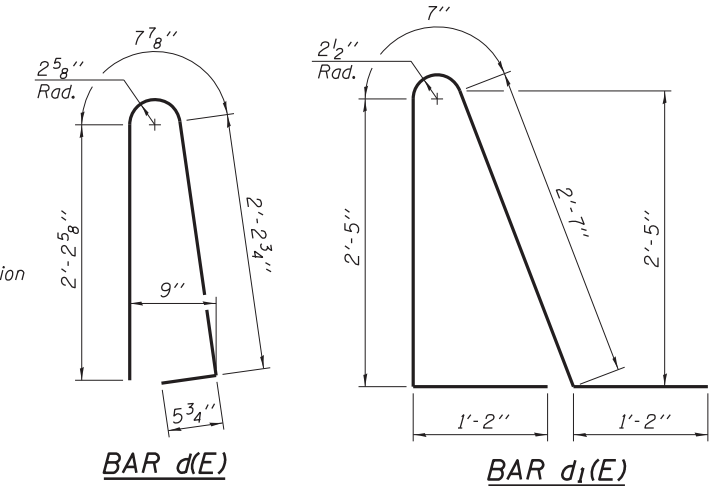
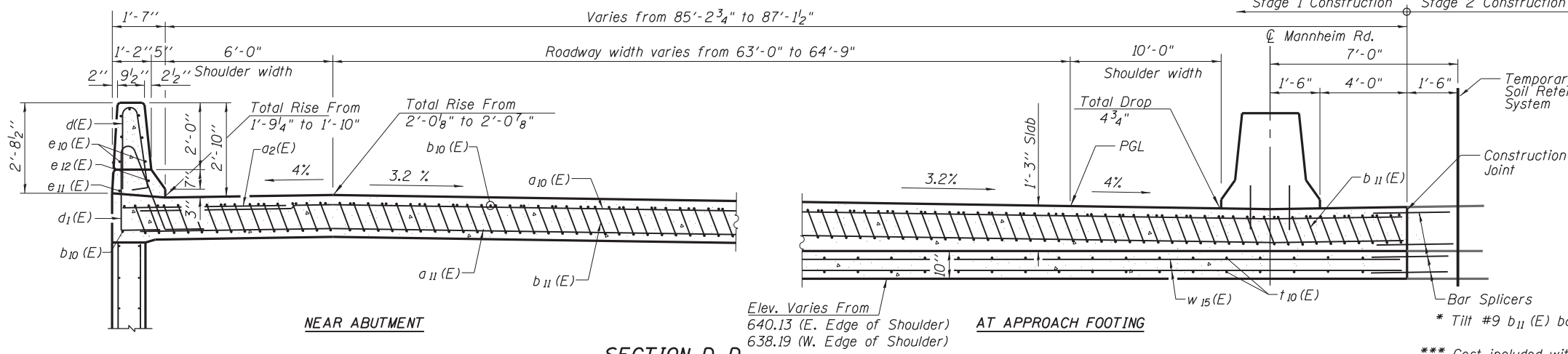


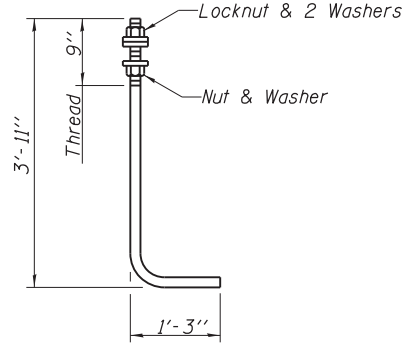
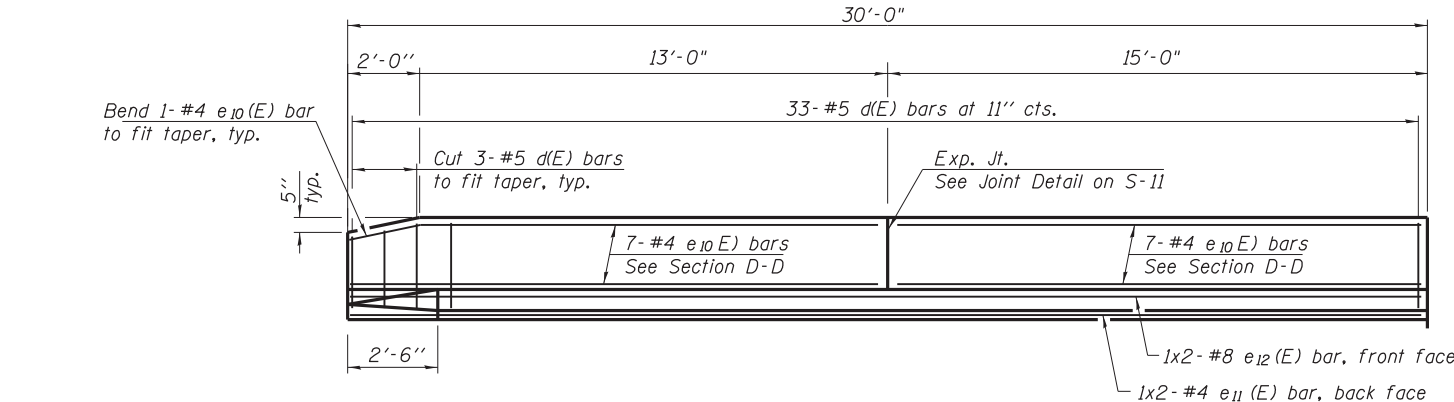
Notes:
 Approach slab and parapet concrete shall be paid for as Concrete Superstructure.
 Approach footing concrete shall be paid for as Concrete Structures.
 Reinforcement shall be paid for as Reinforcement Bars, Epoxy Coated.
 For v(E) bar details, see sheet S-21 and S-23 of S-26.
 The approach footing maximum applied service bearing pressure (Qmax) = 2.0 ksf.
 For bar splicer details, see sheet S-26 of S-26.
 Cost of excavation for approach footing included with Concrete Structures.
 For Porous Granular Backfill and drainage treatment details, see sheet S-2 of S-26.



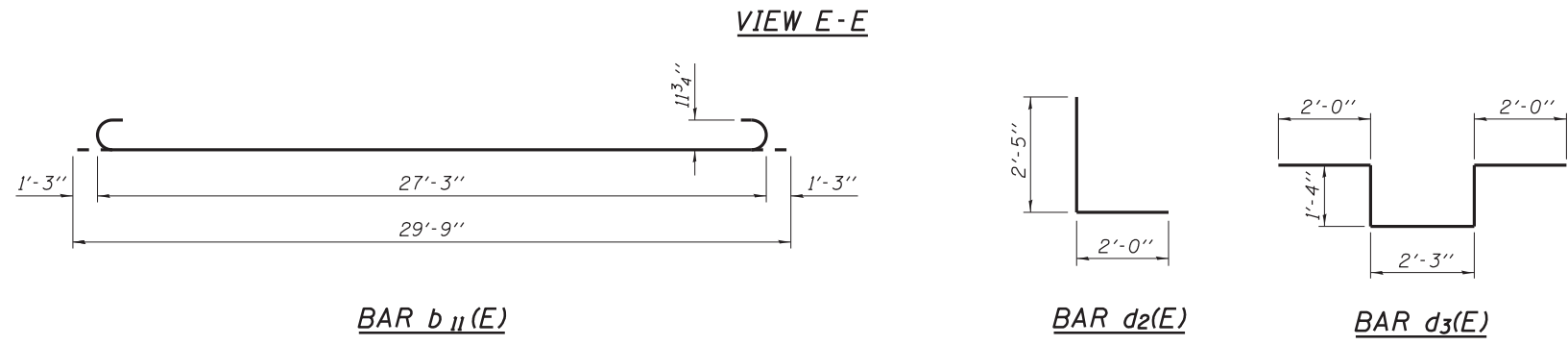
**SOUTH APPROACH
 BILL OF MATERIAL**

Bar	No.	Size	Length	Shape
a ₂ (E)	24	#6	6'-6"	—
a ₁₅ (E)	100	#4	29'-9"	—
a ₁₆ (E)	184	#5	30'-0"	—
b ₁₀ (E)	73	#4	29'-8"	—
b ₁₁ (E)	214	#9	29'-9"	—
d(E)	33	#5	5'-7"	U
d ₁ (E)	33	#5	7'-11"	U
d ₂ (E)	3	#6	4'-5"	L
d ₃ (E)	5	#6	8'-11"	L
d ₁₀ (E)	24	#6	1'-0"	—
e ₁₀ (E)	14	#4	14'-8"	—
e ₁₁ (E)	2	#4	16'-0"	—
e ₁₂ (E)	2	#8	17'-0"	—
t ₁₀ (E)	178	#4	12'-4"	—
w ₁₅ (E)	200	#5	19'-6"	—
Concrete Superstructure		Cu. Yd.	144.0	
Concrete Structures		Cu. Yd.	33.2	
Reinforcement Bars, Epoxy Coated		Pound	37,450	

** Epoxy grout #6 d₁₀(E) bars in 6" drilled holes according to Section 584 of the Standard Specifications.



ANCHOR ROD
 Diameter as specified for light poles.
 (ASTM F 1554 Grade 105) Full Length
 Hot Dipped Galvanized



N:\ROSEMONT\11000\A\CADD_Sheets\0167943-D160C37-015.NBS\Approach_slab.dwg

CHRISTOPHER B. BURKE ENGINEERING, LTD.
 8575 W. Higgins Road, Suite 600
 Rosemont, Illinois 60018
 (847) 924-6500

USER NAME =	DESIGNED - MM	REVISED
PLOT SCALE =	CHECKED - JMB	REVISED
PLOT DATE =	DRAWN - PDR	REVISED
	CHECKED - MM	REVISED

STATE OF ILLINOIS
 DEPARTMENT OF TRANSPORTATION

BRIDGE SOUTH APPROACH SLAB DETAILS
 NB MANNHEIM ROAD BRIDGE - STRUCTURE NO. 016-7943

F.A. RTE. = 330	SECTION = 0105 WRS&HB	COUNTY = COOK	TOTAL SHEETS = 605	SHEET NO. = 351
CONTRACT NO. 60G37				ILLINOIS FED. AID PROJECT

SHEET NO. S-15 OF S-26 SHEETS