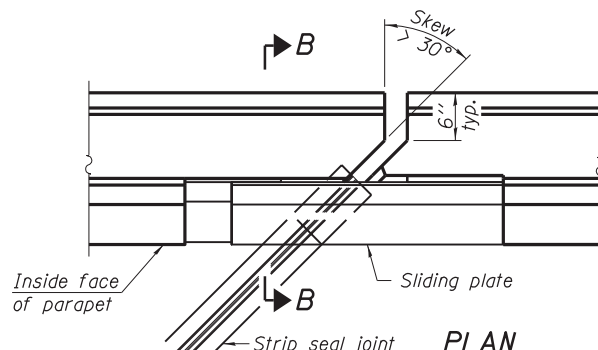
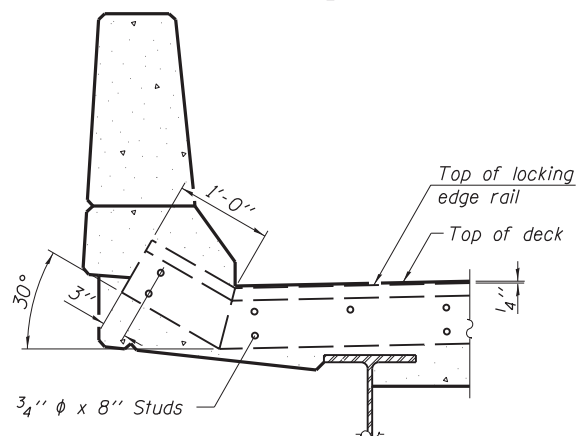


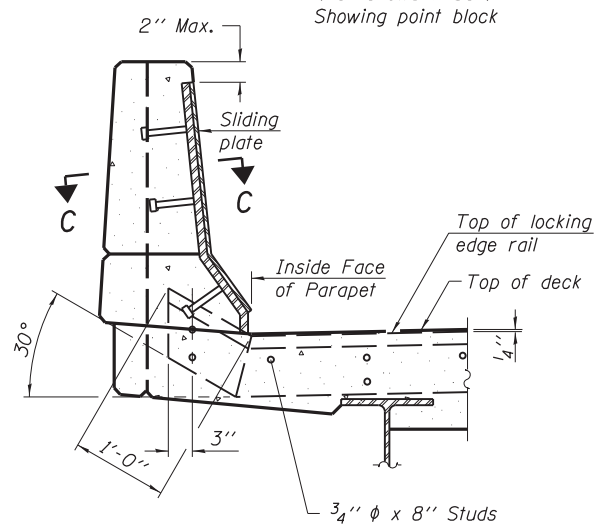
**PLAN**  
(For skews  $\leq 30^\circ$ )



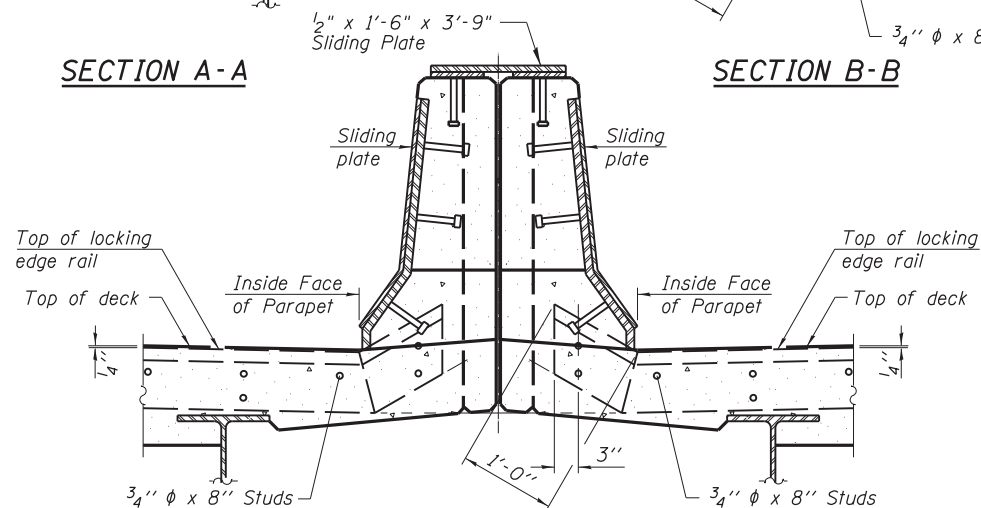
**PLAN**  
(For skews  $> 30^\circ$ )  
Showing point block



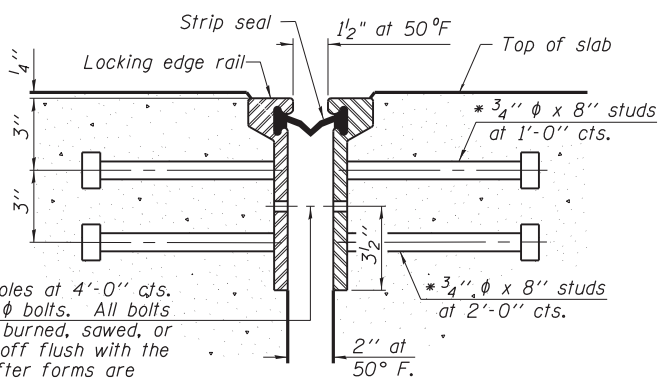
**SECTION A-A**



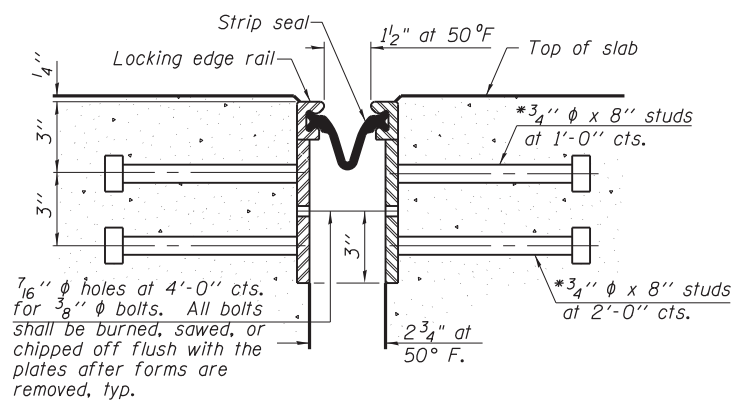
**SECTION B-B**



**SECTION D-D**



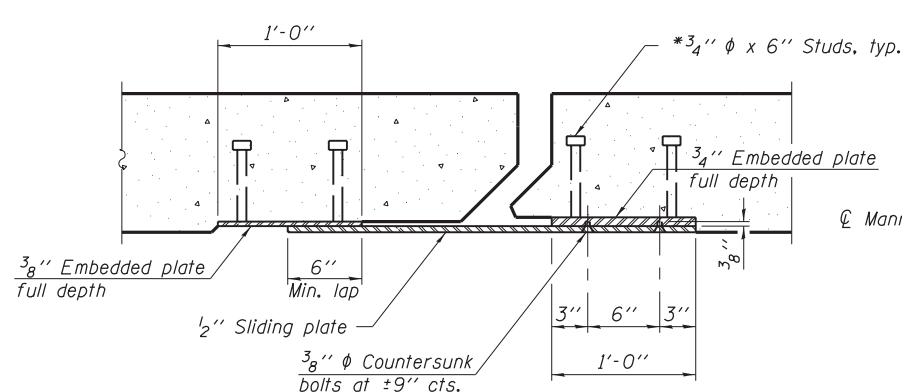
**SECTION THRU ROLLED RAIL JOINT**



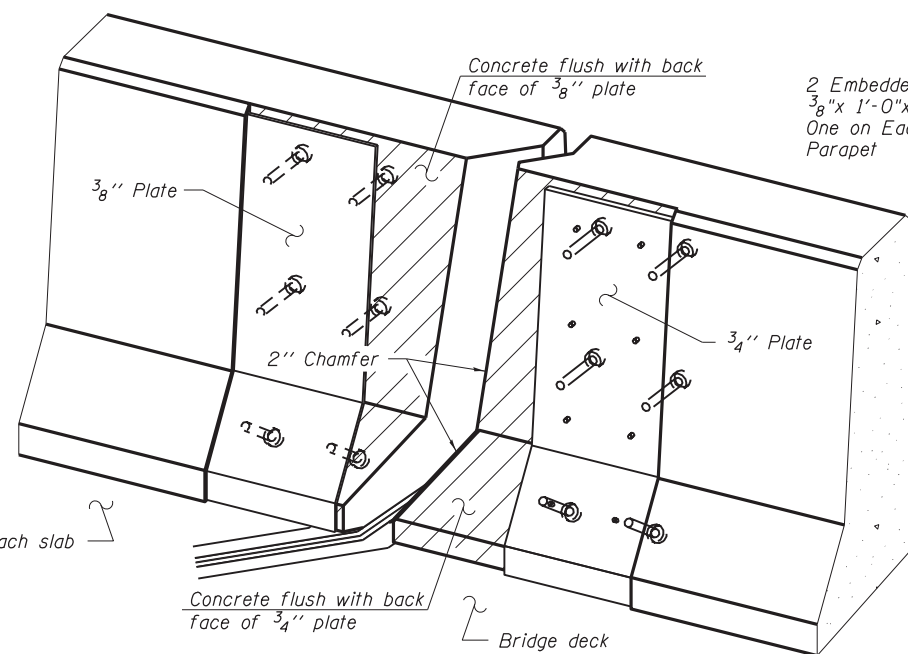
**SECTION THRU WELDED RAIL JOINT**

7/16"  $\phi$  holes at 4'-0" cts. for 3/8"  $\phi$  bolts. All bolts shall be burned, sawed, or chipped off flush with the plates after forms are removed, typ.

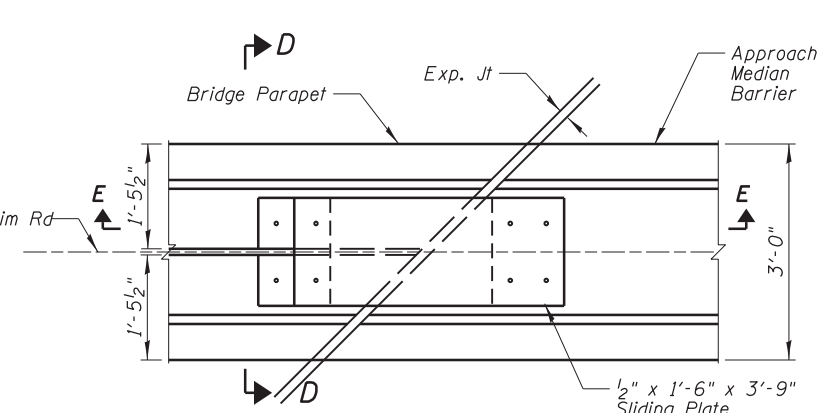
7/16"  $\phi$  holes at 4'-0" cts. for 3/8"  $\phi$  bolts. All bolts shall be burned, sawed, or chipped off flush with the plates after forms are removed, typ.



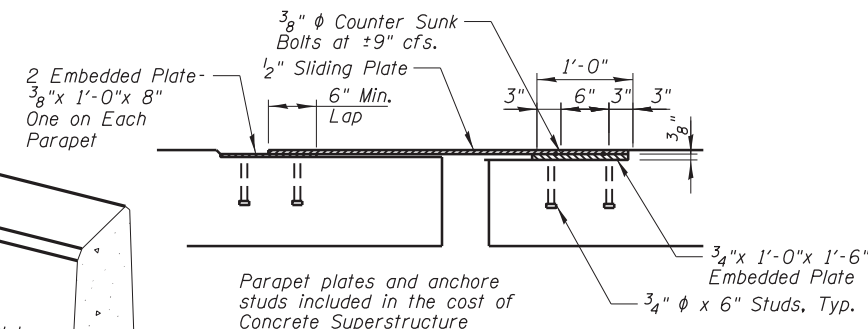
**SECTION C-C**



**TRIMETRIC VIEW**  
(Showing back plates only)

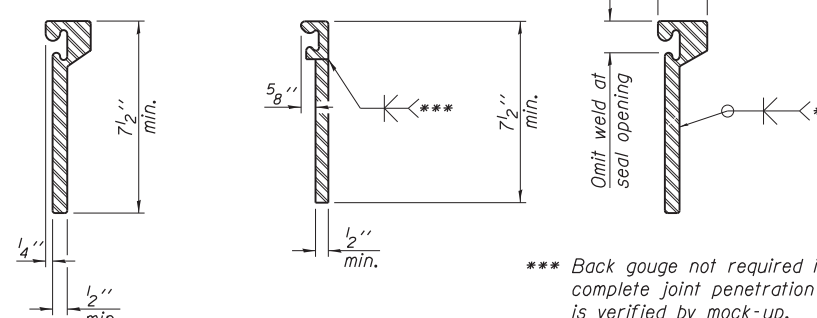


**MIDDLE PARAPET CORNER DETAIL**



**SECTION E-E**

**Notes:**  
The strip seal shall be made continuous and shall have a minimum thickness of 1/4". The configuration of the strip seal shall match the configuration of the Locking Edge Rails. Open or "webbed" strip seal gland configurations are not permitted. The gland shall be sized for a maximum rated movement of 4 inches.  
The Locking Edge Rails depicted are conceptual only, except for the minimum dimensions shown. The actual configuration of the Locking Edge Rails and matching strip seal may vary from manufacturer to manufacturer. Flanged edge rails will not be allowed. Locking Edge Rails may be spliced at slope discontinuities.  
The manufacturer's recommended installation methods shall be followed.  
The joint opening and deck dimensions detailed on the superstructure are based on a rolled rail expansion joint. If the Contractor elects to use the welded rail expansion joint, the opening and deck dimensions shall be modified according to the dimensions detailed on this sheet. Required modifications shall be made at no additional cost to the State.  
All steel components shall be galvanized after fabrication according to Article 520.03 of the Standard Specifications. Maximum space between rail segments at stage lines shall be 3/16", sealed with a suitable sealant.  
Parapet plates and anchorage studs for skews  $> 30^\circ$  included in the cost of Preformed Joint Strip Seal.



**ROLLED EXTRUDED RAIL WELDED RAIL**

\*\*\* Back gauge not required if complete joint penetration is verified by mock-up.

**LOCKING EDGE RAIL SPLICE**  
The inside of the locking edge rail groove shall be free of weld residue.  
Rolled rail shown, welded rail similar.

**LOCKING EDGE RAILS**

**BILL OF MATERIAL**

Item	Unit	Total
Preformed Joint Strip Seal	Foot	219

N:\ROSEMONT\11000\CADD\_Sheets\0167943-016.555101.rvt.dgn

**CHRISTOPHER B. BURKE ENGINEERING, LTD.**  
8575 W. Higgins Road, Suite 600  
Rosemont, Illinois 60018  
(847) 924-6500

USER NAME =	DESIGNED - MM	REVISED
PLOT SCALE =	CHECKED - JMB	REVISED
PLOT DATE	DRAWN - PDR	REVISED
	CHECKED - MM	REVISED

**STATE OF ILLINOIS**  
**DEPARTMENT OF TRANSPORTATION**

**PREFORMED JOINT STRIP SEAL**  
**NB MANNHEIM ROAD BRIDGE - STRUCTURE NO. 016-7943**

F.A. RTE.	SECTION	COUNTY	TOTAL SHEETS	SHEET NO.
330	0105 WRS&HB	COOK	605	352
CONTRACT NO. 60G37				

SHEET NO. S-16 OF S-26 SHEETS

ILLINOIS FED. AID PROJECT