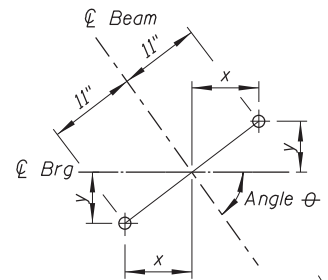
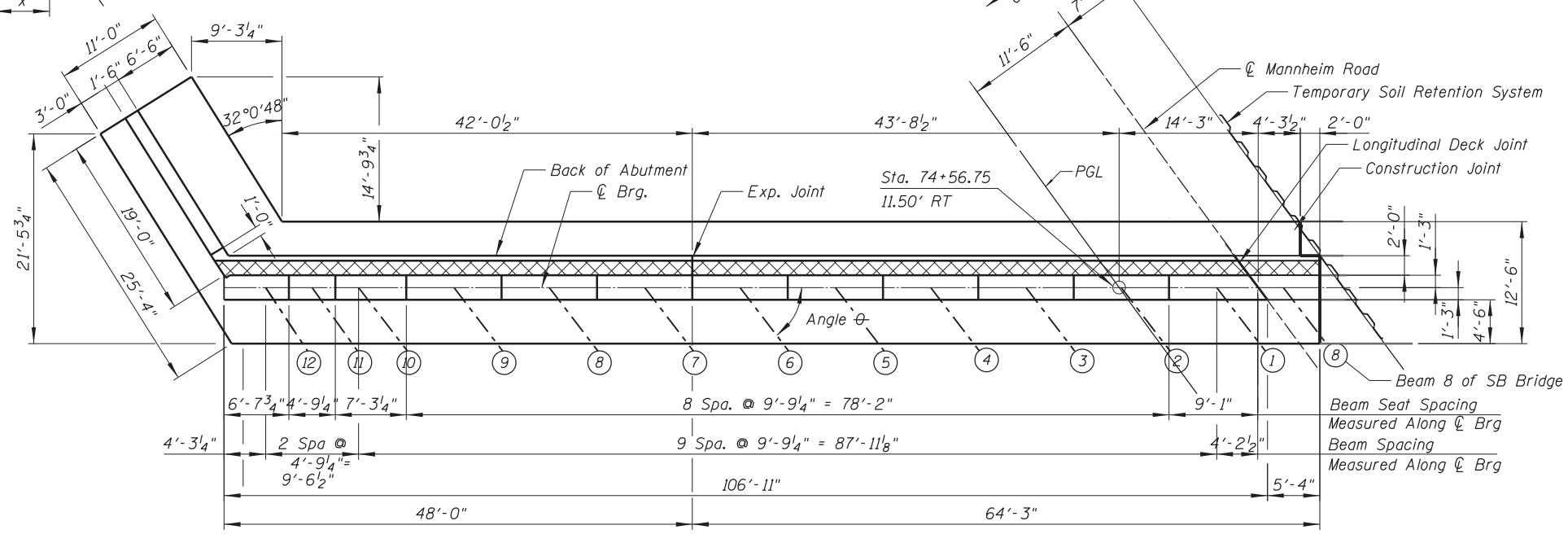


ANCHOR BOLT LOCATION



Beam	x	y
1-10	8 3/4"	6 5/8"
11	9"	6 3/8"
12	9 1/8"	6"



PLAN

BEAM STEPS

Beam	Step Height
1-2	3 3/8"
2-3	2 3/4"
3-4	2 5/8"
4-5	2 3/4"
5-6	2 3/4"
6-7	2 3/4"
7-8	2 3/4"
8-9	2 3/4"
9-10	2 3/4"
10-11	3/4"
11-12	-2 1/8"

NOTES:

1. Bars indicated thus 1x2 - #5 etc. indicates 1 line of bars with 2 lengths per line.
2. Space reinforcement in cap to miss anchor bolts.
3. Four steps monolithically with cap.
4. Hatched area to be poured after superstructure false work has been removed. Quality of concrete included in "Concrete Superstructure".

ANGLE TABLE

Beam	Angle θ *
1	52°-30'-53"
2	52°-30'-53"
3	52°-30'-53"
4	52°-30'-53"
5	52°-30'-53"
6	52°-30'-53"
7	52°-30'-53"
8	52°-30'-53"
9	52°-30'-53"
10	52°-30'-53"
11	54°-30'-36"
12	56°-36'-35"

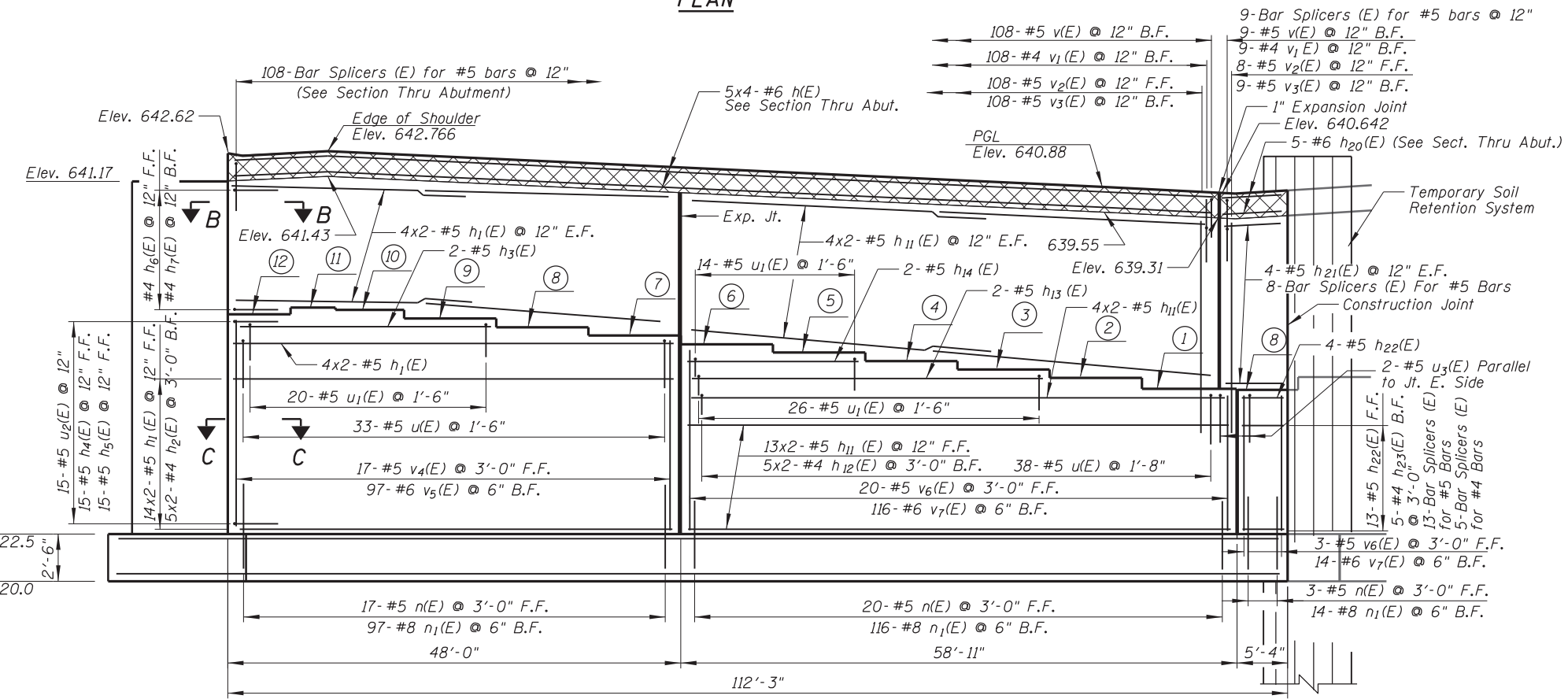
* Measured Relative to ϕ Bearing

BEAM SEAT ELEVATION

Beam	Elevation
1	635.43
2	635.71
3	635.94
4	636.16
5	636.39
6	636.61
7	636.84
8	637.06
9	637.29
10	637.52
11	637.58
12	637.40

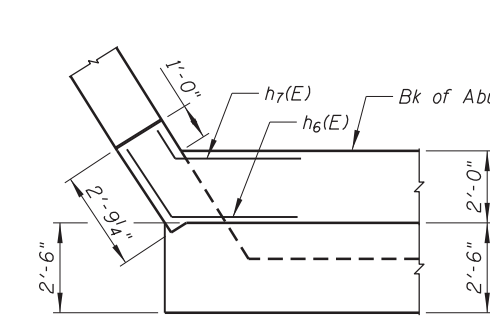
MIN. BAR LAP

Bar	Bar Lap
#4	2'-3"
#5	2'-10"

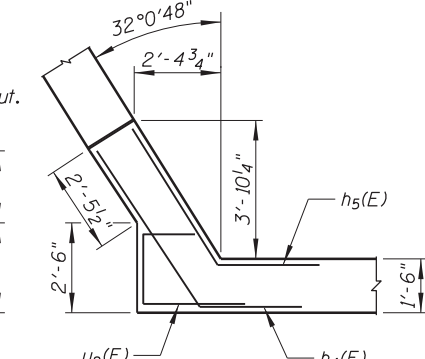


ELEVATION
Looking South

Maximum Applied Service Bearing Pressure (Q_{max}) = 5.8 ksf



SECTION B-B



SECTION C-C

LEGEND:

- F.F. Front Face
- B.F. Back face
- E.F. Each face

N:\ROSEMONT\11000\CADD_Sheets\0167943-0168037-020_SAabutment.dgn

CHRISTOPHER B. BURKE ENGINEERING, LTD.
8575 W. Higgins Road, Suite 600
Rosemont, Illinois 60018
(847) 924-6900

USER NAME =	DESIGNED - MM	REVISED
PLOT SCALE =	CHECKED - JMB	REVISED
PLOT DATE	DRAWN - PDR	REVISED
	CHECKED - MM	REVISED

STATE OF ILLINOIS
DEPARTMENT OF TRANSPORTATION

SOUTH ABUTMENT - PLAN AND ELEVATION
NB MANNHEIM ROAD BRIDGE - STRUCTURE NO. 016-7943

F.A. RTE.	SECTION	COUNTY	TOTAL SHEETS	SHEET NO.
330	0105 WRS&HB	COOK	605	356
CONTRACT NO. 60G37				