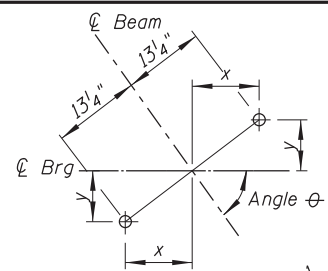
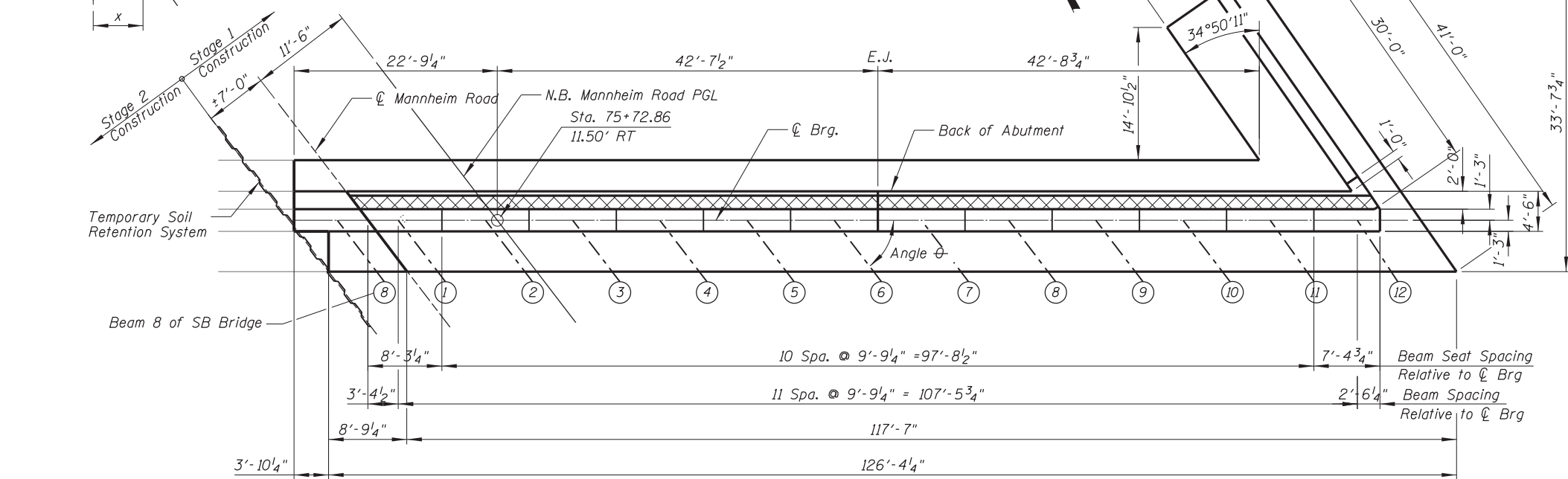


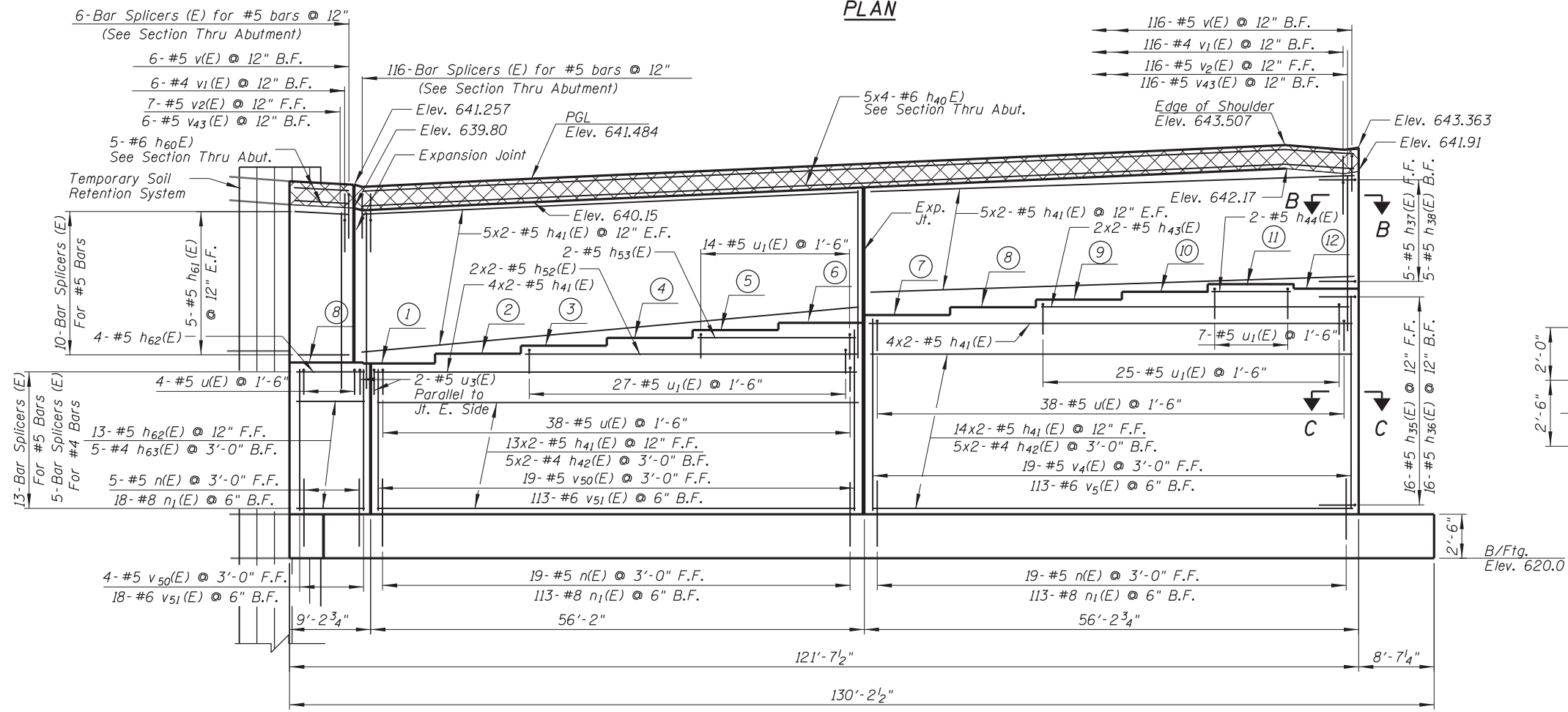
**ANCHOR BOLT LOCATION**



Beam	x	y
1-10	10 1/2"	8"
11	10 3/4"	7 5/8"
12	11"	7 1/4"



**PLAN**



**ELEVATION**

Maximum Applied Service Bearing Pressure ( $Q_{max}$ ) = 5.8 ksf

- NOTES:**
1. Bars indicated thus 1x2 - #5 etc. indicates 1 line of bars with 2 lengths per line.
  2. Space reinforcement in cap to miss anchor bolts.
  3. Pour steps monolithically with cap.
  4. Hatched area to be poured after superstructure false work has been removed. Quality of concrete included in "Concrete Superstructure".

**BEAM STEPS**

Beam	Step Height
1-2	3 3/8"
2-3	2 3/4"
3-4	2 5/8"
4-5	2 5/8"
5-6	2 5/8"
6-7	2 5/8"
7-8	2 5/8"
8-9	2 5/8"
9-10	2 5/8"
10-11	2 5/8"
11-12	-1 1/2"

**BEAM SEAT ELEVATION**

Beam	Elevation
1	635.70
2	635.98
3	636.21
4	636.42
5	636.64
6	636.86
7	637.08
8	637.30
9	637.51
10	637.73
11	637.95
12	637.82

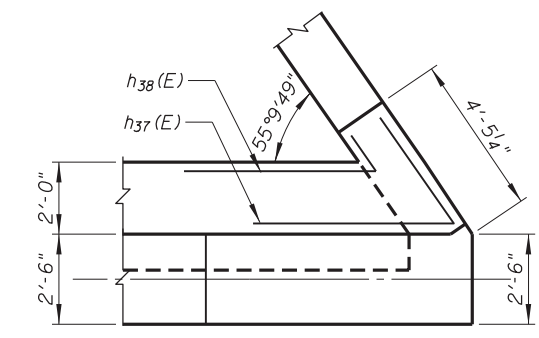
**MIN. BAR LAP**

Bar	Bar Lap
#4	2'-3"
#5	2'-10"

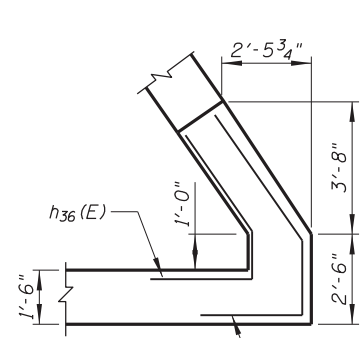
**SKEW ANGLE TABLE**

Beam	Angle $\theta$ *
1	52°-30'-53"
2	52°-30'-53"
3	52°-30'-53"
4	52°-30'-53"
5	52°-30'-53"
6	52°-30'-53"
7	52°-30'-53"
8	52°-30'-53"
9	52°-30'-53"
10	52°-30'-53"
11	54°-30'-36"
12	56°-36'-35"

\* Measured Relative to  $\phi$  Bearing



**SECTION B-B**



**SECTION C-C**

- LEGEND:**
- F.F. Front Face
  - B.F. Back face
  - E.F. Each face

N:\ROSEMONT\11009\CADD\_Sheets\0167943-0168037-022\_NAbutment.dgn

**CHRISTOPHER B. BURKE ENGINEERING, LTD.**  
 8575 W. Higgins Road, Suite 600  
 Rosemont, Illinois 60018  
 (847) 924-6500

USER NAME =	DESIGNED - MM	REVISED
PLOT SCALE =	CHECKED - JMB	REVISED
PLOT DATE	DRAWN - PDR	REVISED
	CHECKED - MM	REVISED

**STATE OF ILLINOIS**  
**DEPARTMENT OF TRANSPORTATION**

**NORTH ABUTMENT - PLAN AND ELEVATION**  
**NB MANNHEIM ROAD BRIDGE - STRUCTURE NO. 016-7943**

F.A. RTE.	SECTION	COUNTY	TOTAL SHEETS	SHEET NO.
330	0105 WRS&HB	COOK	605	358
CONTRACT NO. 60G37				

SHEET NO. S-22 OF S-26 SHEETS

ILLINOIS FED. AID PROJECT