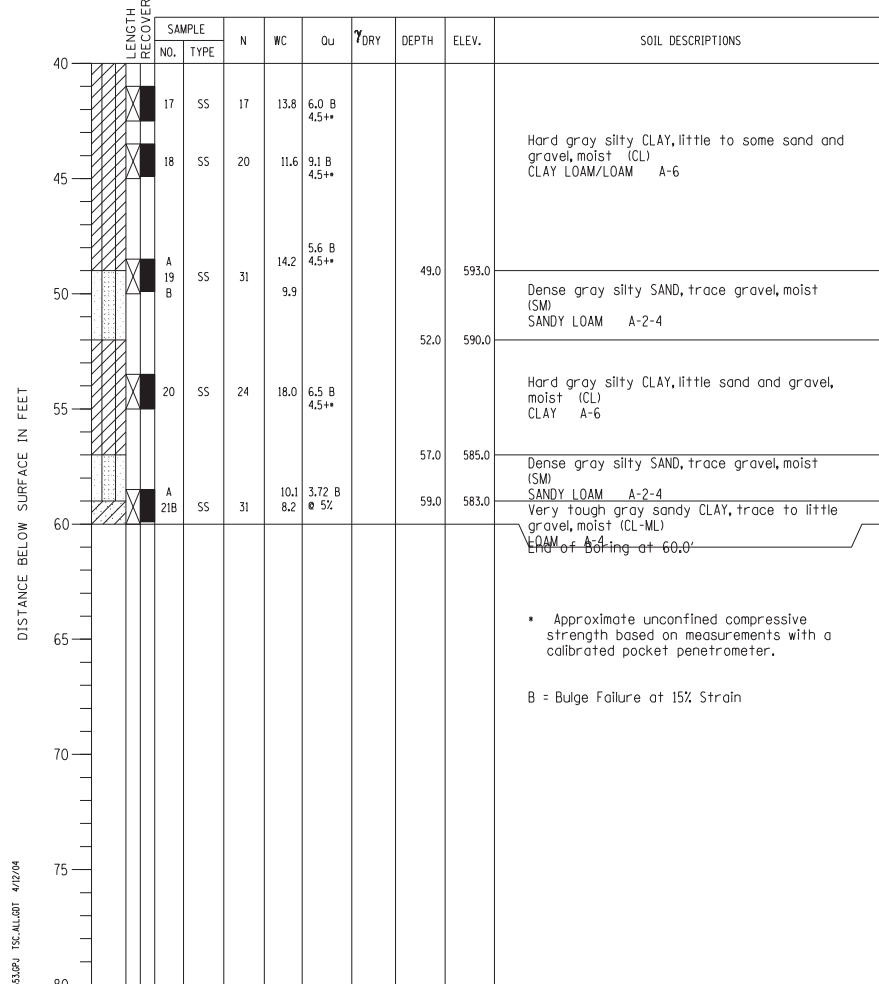


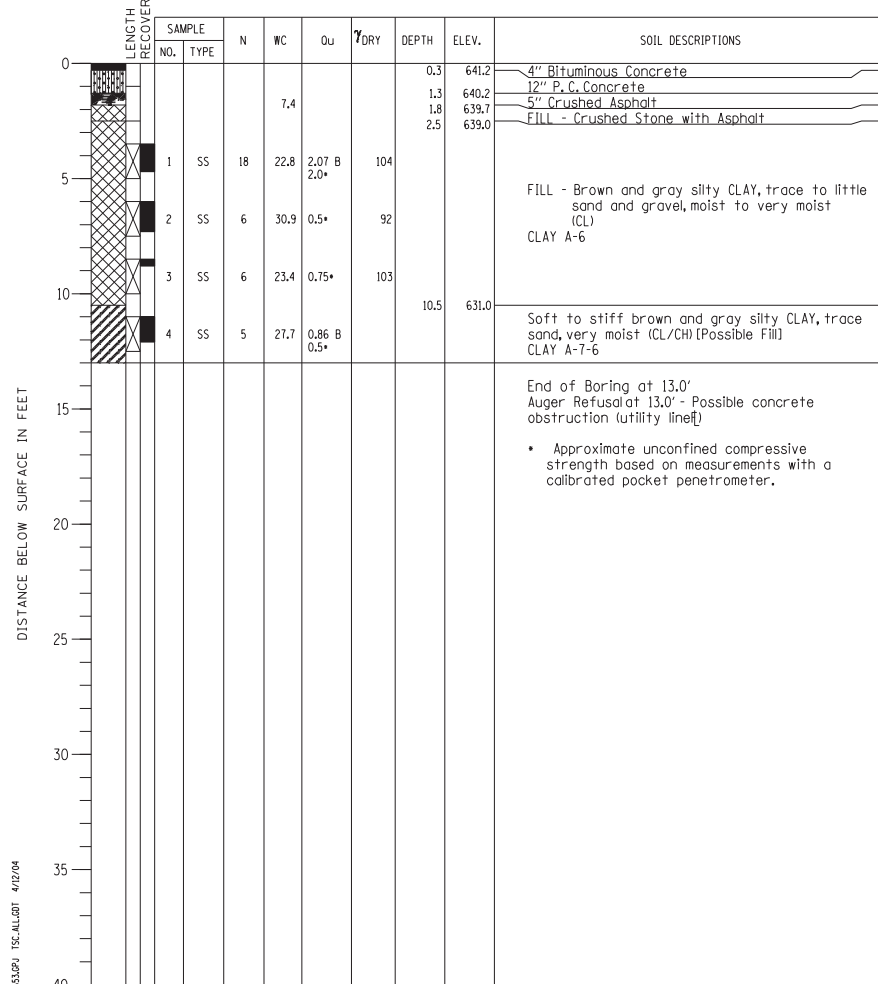
PROJECT Balmoral Avenue Extension - Phase II, Rosemont, Illinois
 CLIENT Christopher B. Burke Engineering, Ltd., Rosemont, Illinois
 BORING 20 DATE STARTED 10-1-02 DATE COMPLETED 10-1-02 JOB L-52,653
 ELEVATIONS
 GROUND SURFACE 642.0 WHILE DRILLING Dry to 10.0'
 END OF BORING 582.0 AT END OF BORING Rotary Wash
 WATER LEVEL OBSERVATIONS
 24 HOURS



DRILL RIG NO. 275
 Division lines between deposits represent approximate boundaries between soil types; in-situ, the transition may be gradual.
 Page 2 of 2

BORING NO. 20
 Station 75+48.25
 Offset 34.94' RT

PROJECT Balmoral Avenue Extension - Phase II, Rosemont, Illinois
 CLIENT Christopher B. Burke Engineering, Ltd., Rosemont, Illinois
 BORING 21 DATE STARTED 4-11-02 DATE COMPLETED 4-11-02 JOB L-52,653
 ELEVATIONS
 GROUND SURFACE 641.5 WHILE DRILLING Dry
 END OF BORING 628.5 AT END OF BORING Grouted
 WATER LEVEL OBSERVATIONS
 24 HOURS



DRILL RIG NO. 217
 Division lines between deposits represent approximate boundaries between soil types; in-situ, the transition may be gradual.

BORING NO. 21
 Station 74+41.51
 Offset 89.91' RT

N:\ROSEMONT\11000\CADD_Sheets\0167943-D1660337-026-Bor-ing.dgn

CHRISTOPHER B. BURKE ENGINEERING, LTD.
 8575 W. Higgins Road, Suite 600
 Rosemont, Illinois 60018
 (847) 924-8900

USER NAME =	DESIGNED - MM	REVISED
PLOT SCALE =	CHECKED - JMB	REVISED
PLOT DATE =	DRAWN - PDR	REVISED
	CHECKED - MM	REVISED

STATE OF ILLINOIS
 DEPARTMENT OF TRANSPORTATION

BORING LOGS
 NB MANNHEIM ROAD BRIDGE - STRUCTURE NO. 016-7943
 SHEET NO. S-26 OF S-26 SHEETS

F.A. RTE.	SECTION	COUNTY	TOTAL SHEETS	SHEET NO.
330	0105 WRS&HB	COOK	605	362
CONTRACT NO. 60G37				
ILLINOIS FED. AID PROJECT				