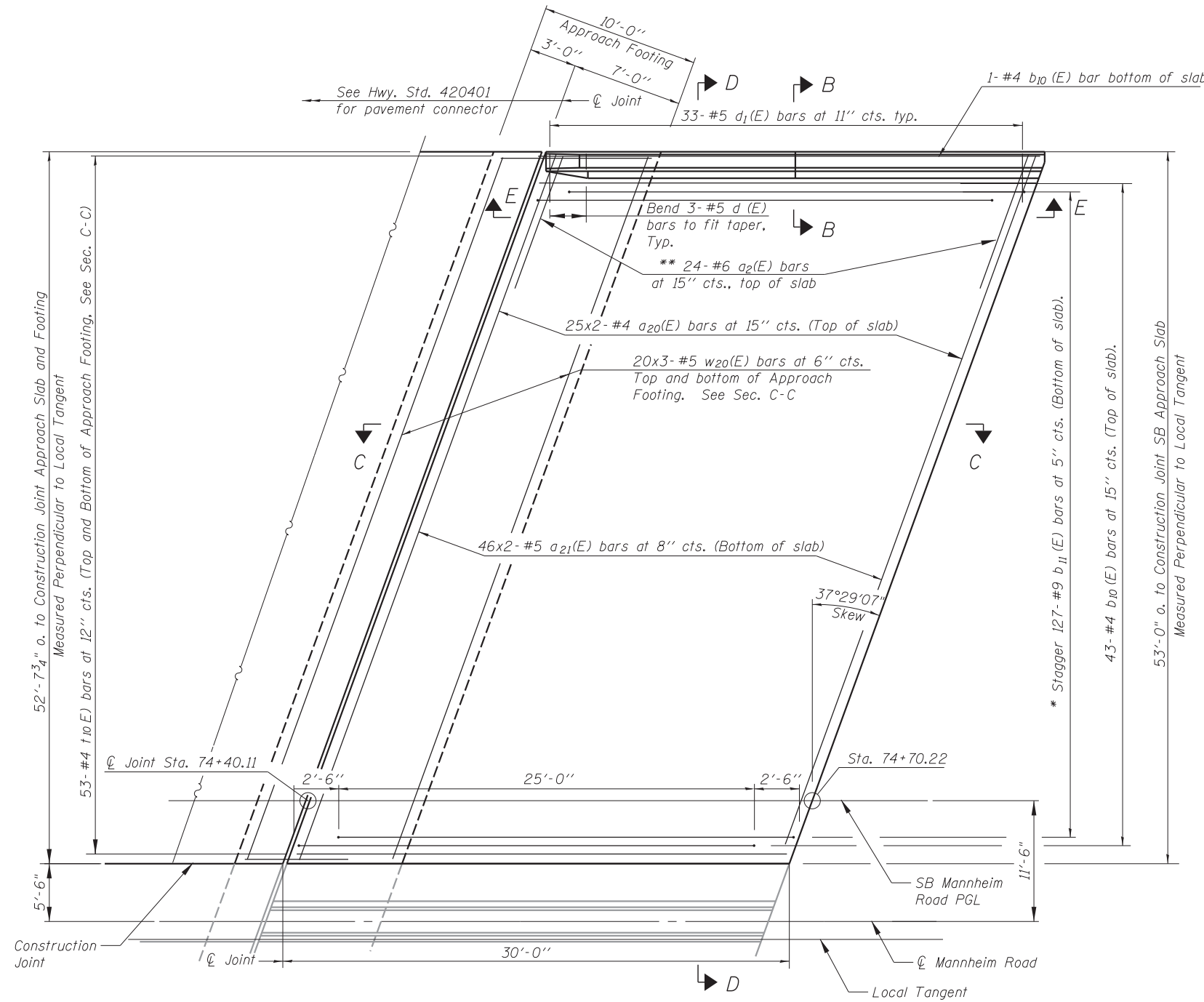
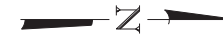


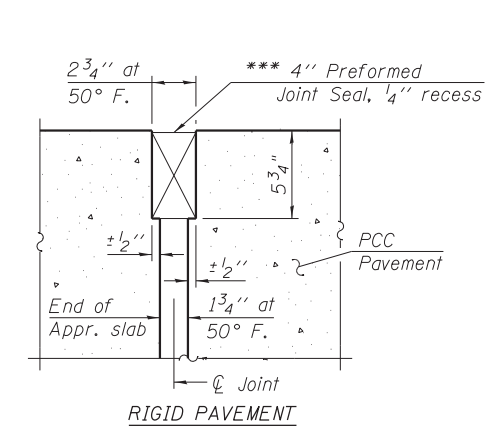
Notes:
See sheet S-14 of S-27 for Sections C-C & D-D and View E-E.
 $a_{20}(E)$ and $a_{21}(E)$ bar spacings measured along \varnothing Rdwy.



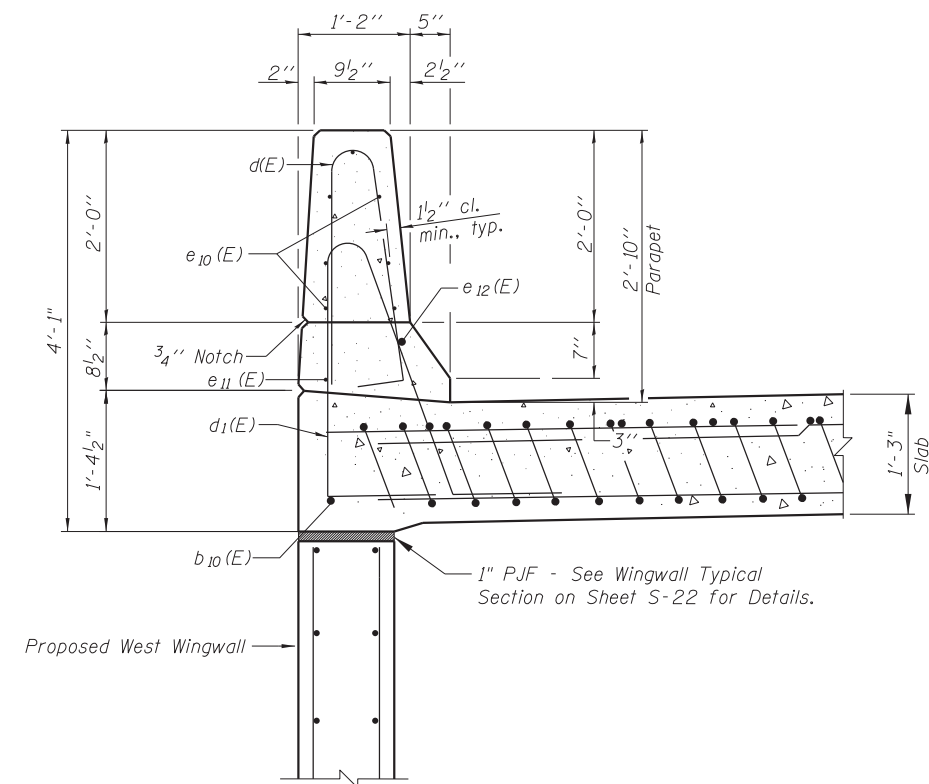
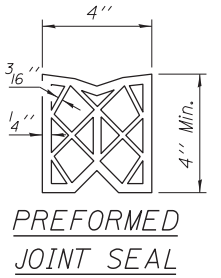
PLAN

* Tilt #9 $b_{11}(E)$ bars as required to maintain clearance.
** Space between $a_{20}(E)$ bars, typ. each parapet.

*** Cost included with Concrete Superstructure.



DETAIL A



VIEW B-B

MINIMUM BAR LAP

- #4 bar = 2'-3"
- #5 bar = 3'-3"
- #8 bar = 5'-2"

N:\ROSEHNT\11000\CADD_Sheets\0167942-D168037-013.585Appr...slab.dgn

CHRISTOPHER B. BURKE ENGINEERING, LTD.
9575 W. Higgins Road, Suite 600
Rosemont, Illinois 60018
(847) 924-2500

USER NAME =	DESIGNED - MM	REVISED
	CHECKED - JMB	REVISED
PLOT SCALE =	DRAWN - PDR	REVISED
PLOT DATE =	CHECKED - MM	REVISED

**STATE OF ILLINOIS
DEPARTMENT OF TRANSPORTATION**

**BRIDGE SOUTH APPROACH SLAB DETAILS
SB MANNHEIM ROAD BRIDGE - STRUCTURE NO. 016-7942**

F.A. RTE.	SECTION	COUNTY	TOTAL SHEETS	SHEET NO.
330	0105 WRS&HB	COOK	605	375
CONTRACT NO. 60G37				

SHEET NO. S-13 OF S-27 SHEETS

ILLINOIS FED. AID PROJECT