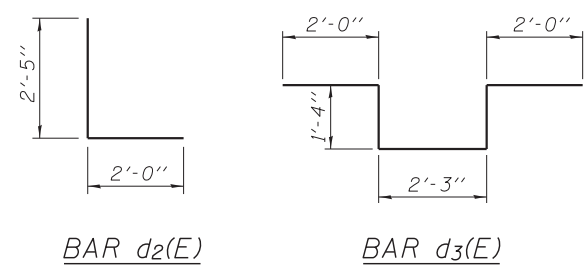
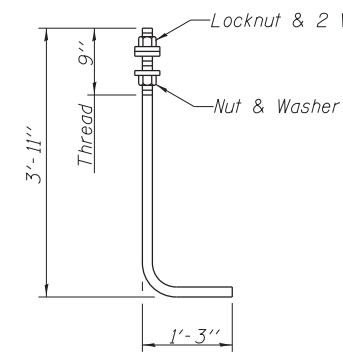
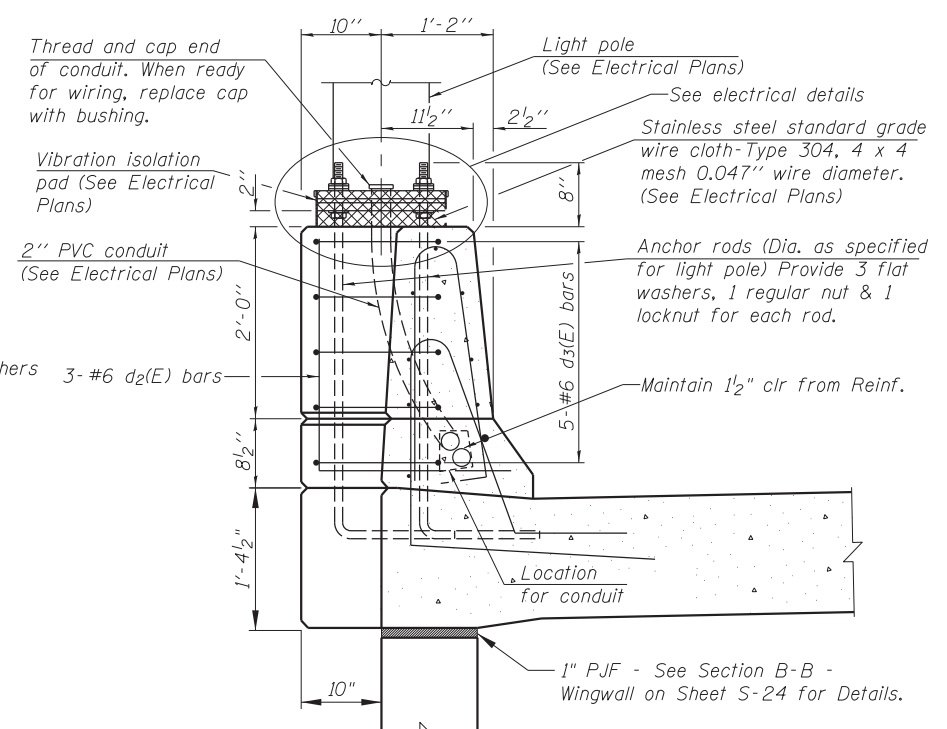
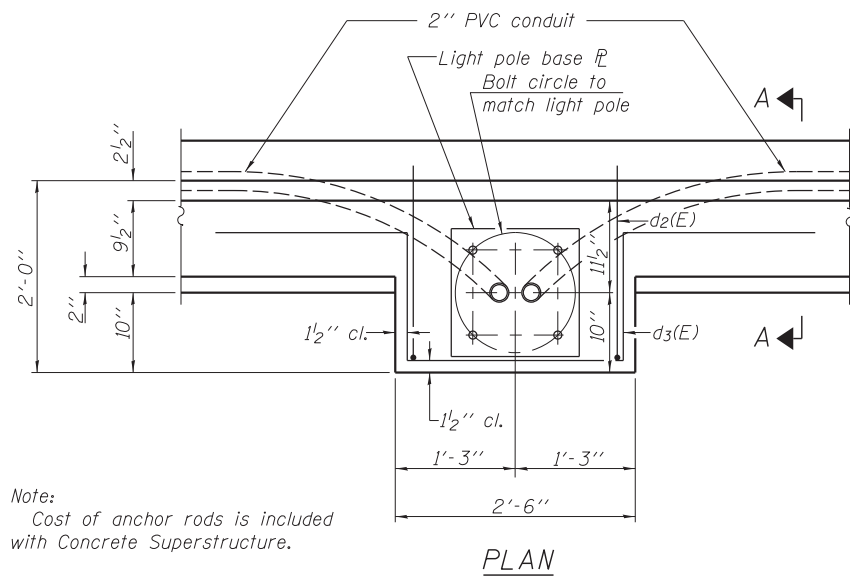
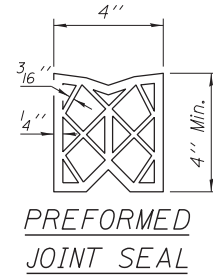
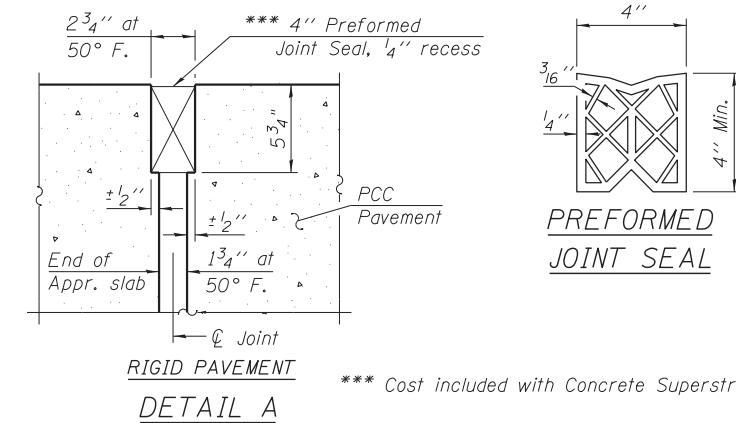
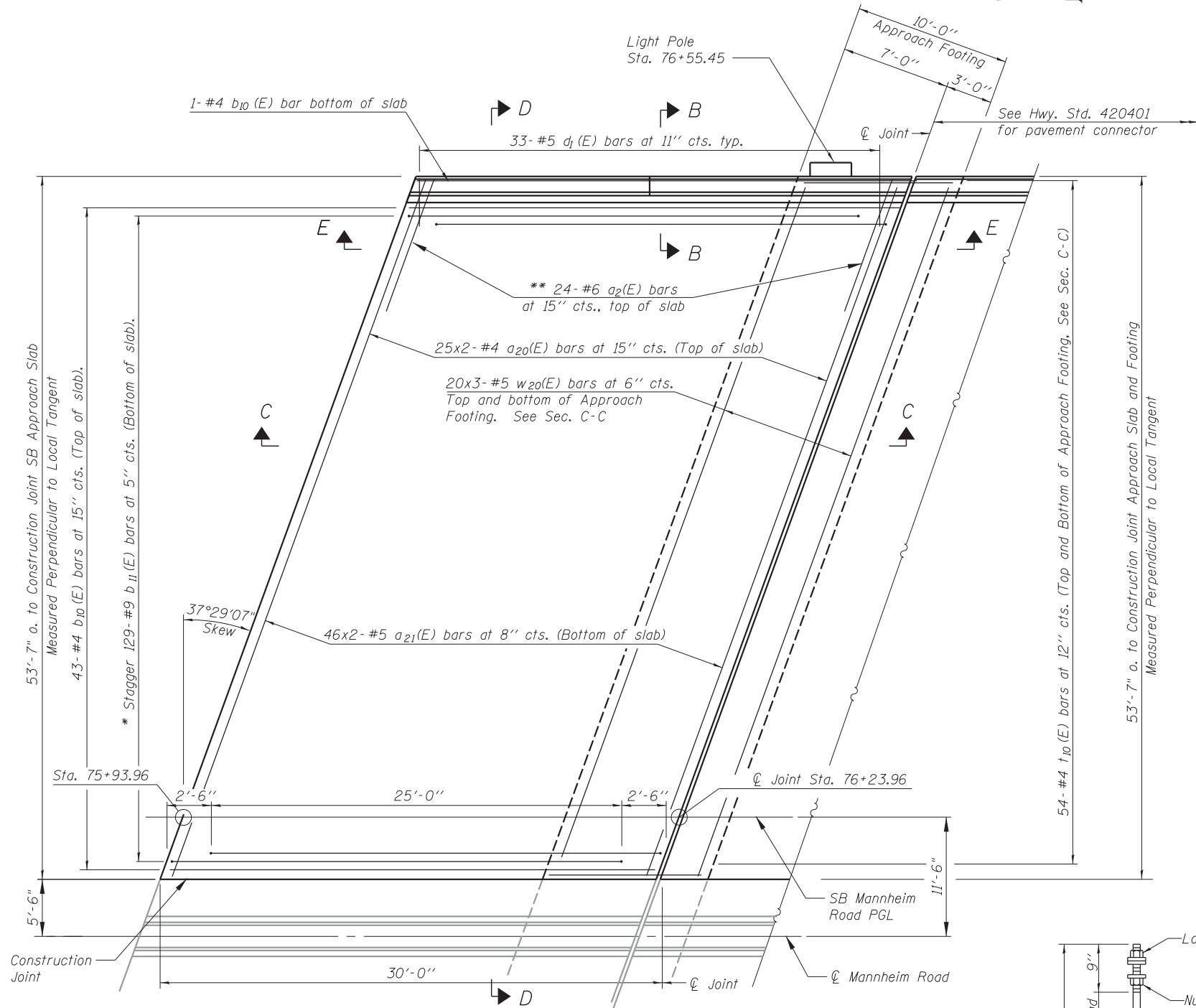


Notes:  
 See sheet S-16 of S-27 for Sections C-C & D-D and View E-E.  
 $a_{20}(E)$  and  $a_{21}(E)$  bar spacings measured along  $\phi$  Rdwy.



\* Tilt #9  $b_{11}(E)$  bars as required to maintain clearance.  
 \*\* Space between  $a_{20}(E)$  bars, typ. each parapet.

MINIMUM BAR LAP  
 #4 bar = 2'-3"  
 #5 bar = 3'-3"  
 #8 bar = 5'-2"

N:\ROSEHNT\11000\CADD\_Sheets\0167942-D160C37-015.Appr.-slab.dgn

CHRISTOPHER B. BURKE ENGINEERING, LTD.  
 9575 W. Higgins Road, Suite 600  
 Rosemont, Illinois 60018  
 (847) 922-0500

USER NAME =	DESIGNED - MM	REVISED
CHECKED - JMB	REVISOR	
PLOT SCALE =	DRAWN - PDR	REVISOR
PLOT DATE =	CHECKED - MM	REVISOR

STATE OF ILLINOIS  
 DEPARTMENT OF TRANSPORTATION

BRIDGE N. APPROACH SLAB DETAILS  
 SB MANNHEIM ROAD BRIDGE - STRUCTURE NO. 016-7942

F.A. RTE.	SECTION	COUNTY	TOTAL SHEETS	SHEET NO.
330	0105 WRS&HB	COOK	605	377
			CONTRACT NO. 60G37	
ILLINOIS FED. AID PROJECT				

SHEET NO. S-15 OF S-27 SHEETS