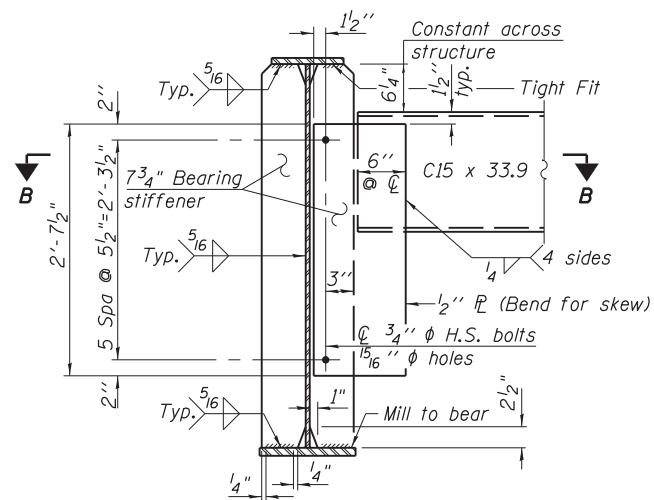
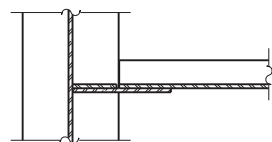


**SECTION B-B**

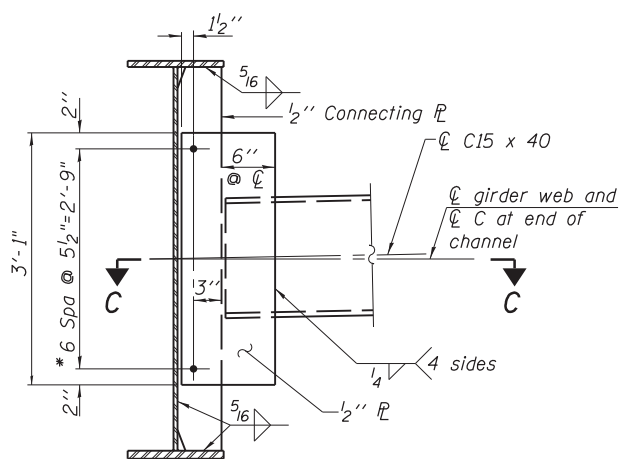


**END DIAPHRAGM D1**

Note: Two hardened washers required for each set of oversized holes.



**SECTION C-C**



**INTERIOR DIAPHRAGM D2**

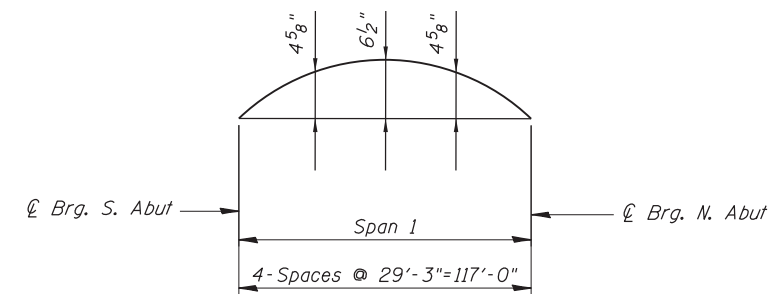
Note:  
Two hardened washers required for each set of oversized holes.  
\*  $\frac{3}{4}$ "  $\phi$  HS bolts,  $\frac{5}{16}$ "  $\phi$  holes

**TOP OF WEB ELEVATION FOR FABRICATION ONLY**

Beam	S. Abutment	N. Abutment
Beam 1	638.776	639.366
Beam 2	639.055	639.643
Beam 3	639.281	639.869
Beam 4	639.499	640.084
Beam 5	639.717	640.300
Beam 6	639.936	640.515
Beam 7	640.037	640.652
Beam 8	639.697	640.315

**NOTES:**

- All structure steel for Plate and Bearing Stiffeners, shall be AASHTO M270 Grade 50.
- Load carrying components designated "NTR" shall conform to the Impact Testing Requirement, Zone 2.
- Clip all cross frame connection plates 1" horizontally and  $2\frac{1}{2}$ " vertically at web to flange connection.
- All Bearing Stiffeners, and Cross Frame Connection Plates Shall be perpendicular to the centerline of the plate girders.



**CAMBER DIAGRAM**

**THIS SHEET IS FOR INFORMATION ONLY**

N:\ROSEMONT\11009\CADD\_Sheets\0167942-0168037-019\_Framing.dgn

**CHRISTOPHER B. BURKE ENGINEERING, LTD.**  
8575 W. Higgins Road, Suite 600  
Rosemont, Illinois 60018  
(847) 924-8900

USER NAME =	DESIGNED - MM	REVISED
	CHECKED - JMB	REVISED
PLOT SCALE =	DRAWN - PDR	REVISED
PLOT DATE =	CHECKED - MM	REVISED

**STATE OF ILLINOIS  
DEPARTMENT OF TRANSPORTATION**

**DIAPHRAGM DETAILS  
SB MANNHEIM ROAD BRIDGE - STRUCTURE NO. 016-7942**

F.A. RTE.	SECTION	COUNTY	TOTAL SHEETS	SHEET NO.
330	0105 WRS&HB	COOK	605	381
CONTRACT NO. 60G37				

SHEET NO. S-19 OF S-27 SHEETS

ILLINOIS FED. AID PROJECT