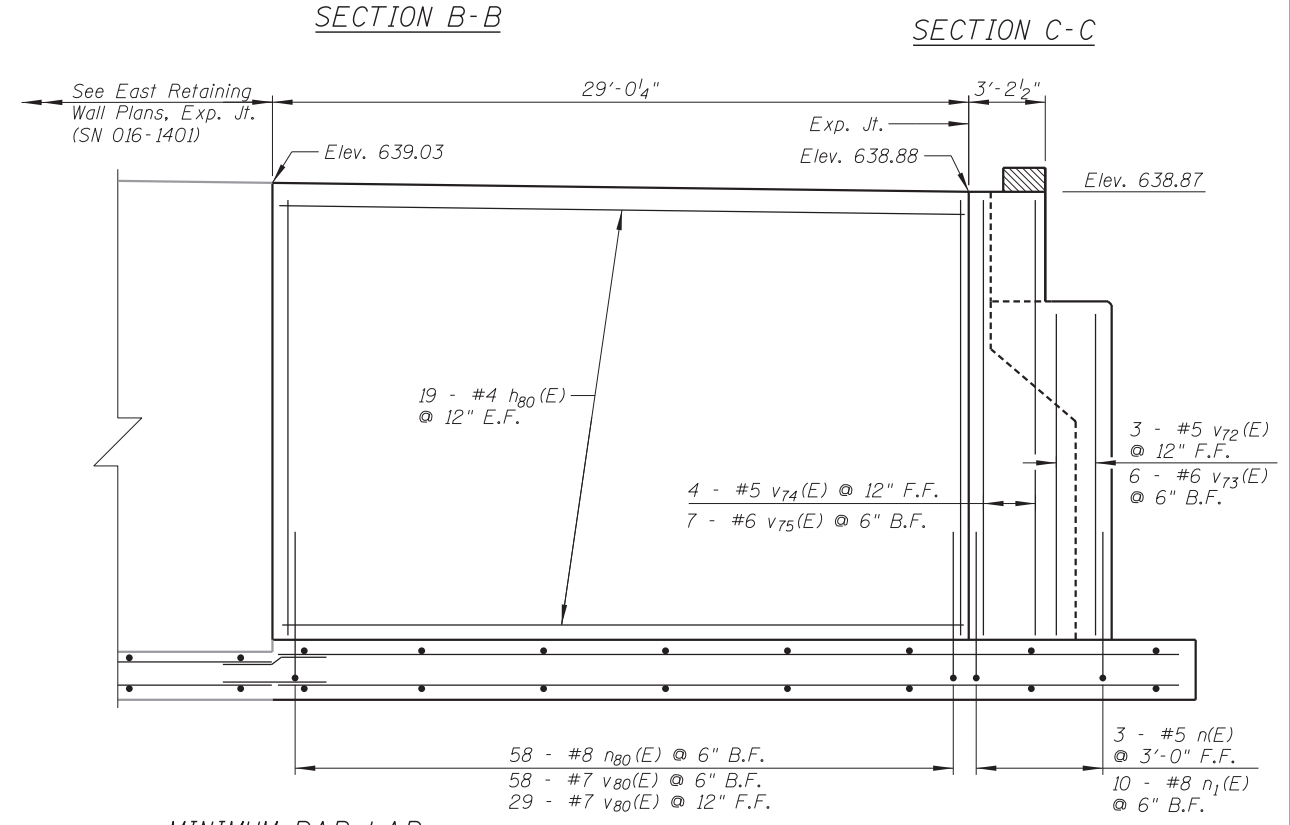
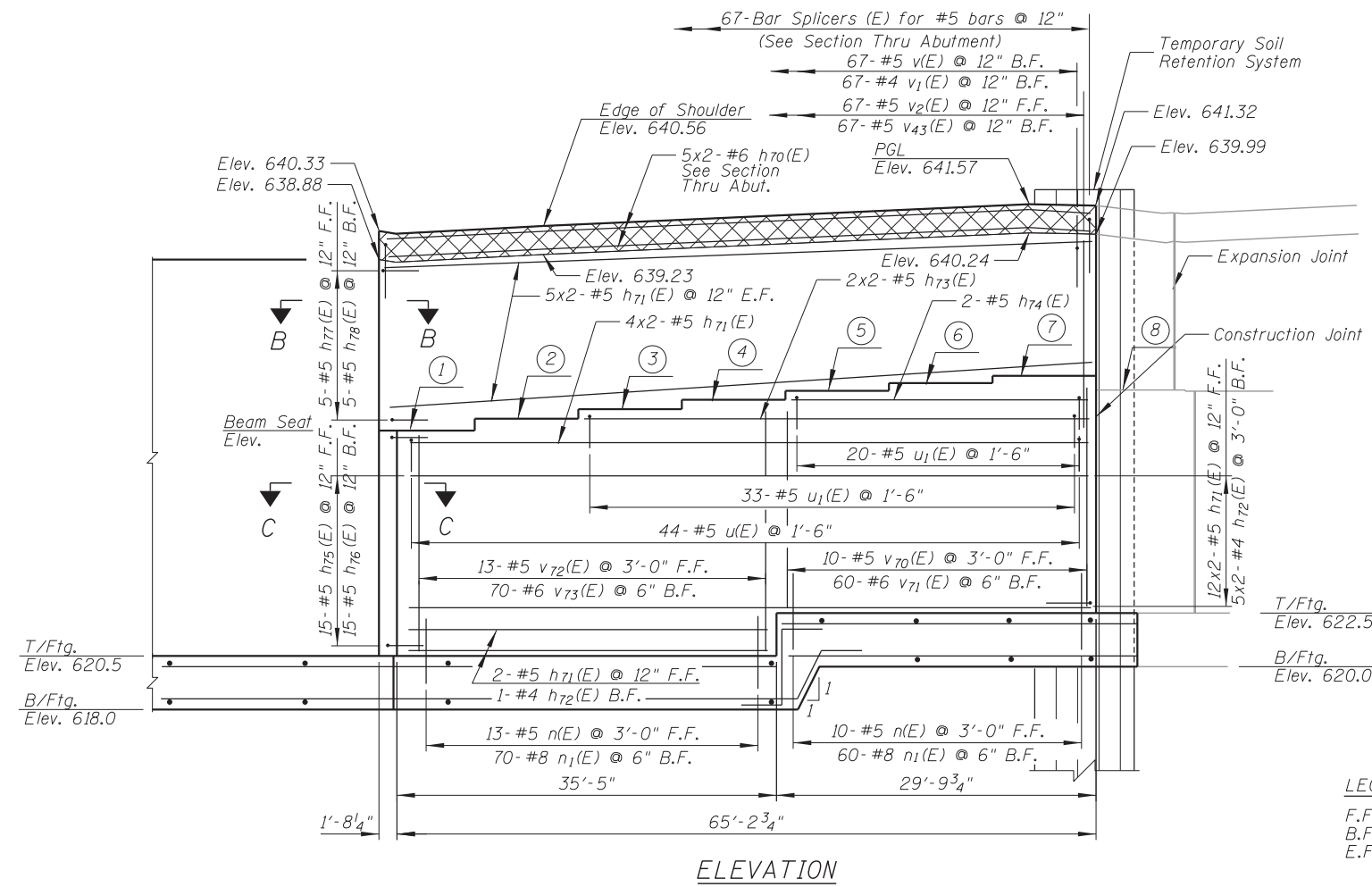
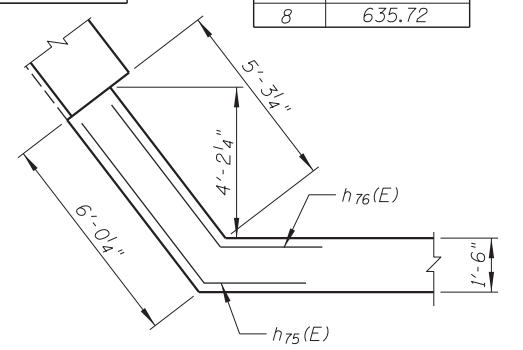
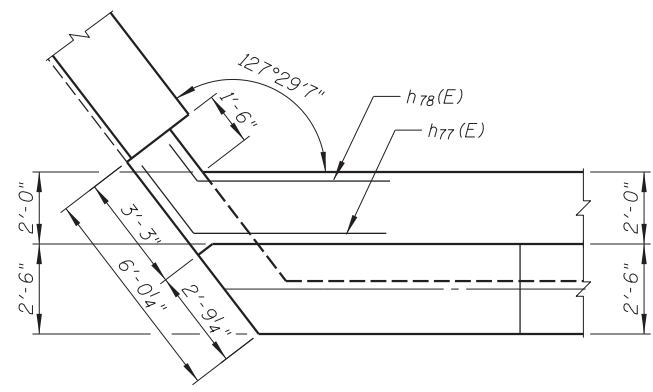


- NOTES:**
1. Reinforcement bars designated (E) shall be epoxy coated.
 2. Bars indicated thus 1x2 - #5 etc. indicates 1 line of bars with 2 lengths per line.
 3. Space reinforcement in cap to miss anchor bolts.
 4. Pour steps monolithically with cap.
 5. Hatched area to be poured after superstructure false work has been removed. Quality of concrete included in "Concrete Superstructure".

BEAM STEPS		BEAM SEAT ELEVATION	
Beam	Step Height	Beam	Elevation
1-2	3 3/8	1	634.77
2-3	2 5/8	2	635.05
3-4	2 5/8	3	635.27
4-5	2 5/8	4	635.49
5-6	2 1/2	5	635.71
6-7	1 5/8	6	635.92
7-8	-4 1/8	7	636.06
		8	635.72



- LEGEND:**
- F.F. Front Face
B.F. Back Face
E.F. Each Face
- MINIMUM BAR LAP**
- #4 bar = 2'-3"
 - #5 bar = 2'-10"
 - #6 bar = 3'-10"
 - #8 bar = 6'-9"

Maximum Applied Service Bearing Pressure (Q_{max}) = 5.8 ksf

N:\PROJECTS\11000\CADD_Sheets\0167942-D160037-023_Maburment.dgn

CHRISTOPHER B. BURKE ENGINEERING, LTD.
9375 W. Higgins Road, Suite 600
Rosemont, Illinois 60018
(847) 922-6500

USER NAME =	DESIGNED - MM	REVISED
PLOT SCALE =	CHECKED - JMB	REVISED
PLOT DATE =	DRAWN - PDR	REVISED
	CHECKED - MM	REVISED

**STATE OF ILLINOIS
DEPARTMENT OF TRANSPORTATION**

**NORTH ABUTMENT - PLAN AND ELEVATION
SB MANNHEIM ROAD BRIDGE - STRUCTURE NO. 016-7942**

F.A. RTE.	SECTION	COUNTY	TOTAL SHEETS	SHEET NO.
330	0105 WRS&HB	COOK	605	385
CONTRACT NO. 60G37				
ILLINOIS FED. AID PROJECT				

SHEET NO. S-23 OF S-27 SHEETS