

**\*\* STANDARD BAR SPLICER ASSEMBLY**

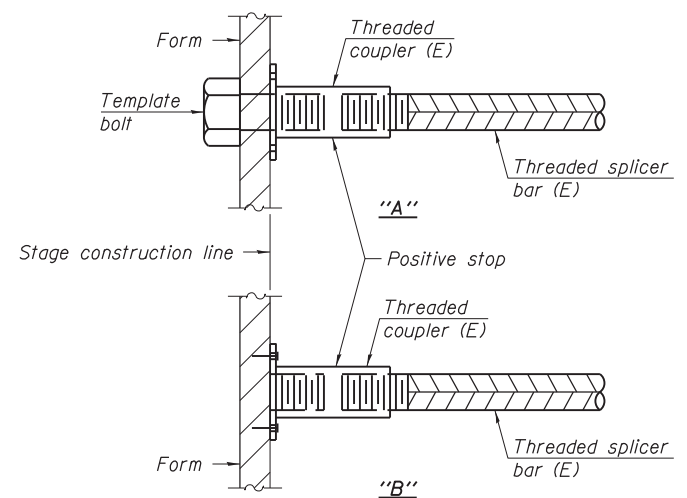
Minimum Lap Lengths					
Bar size to be spliced	Table 1	Table 2	Table 3	Table 4	Table 5
3, 4	1'-5"	1'-11"	2'-1"	2'-4"	2'-3"
5	1'-9"	2'-5"	2'-7"	2'-11"	2'-10"
6	2'-1"	2'-11"	3'-1"	3'-6"	3'-4"
7	2'-9"	3'-10"	4'-2"	4'-8"	4'-6"
8	3'-8"	5'-1"	5'-5"	6'-2"	5'-10"
9	4'-7"	6'-5"	6'-10"	7'-9"	7'-5"

- Table 1: Black bar, 0.8 Class C
- Table 2: Black bar, Top bar lap, 0.8 Class C
- Table 3: Epoxy bar, 0.8 Class C
- Table 4: Epoxy bar, Top bar lap, 0.8 Class C
- Table 5: Epoxy bar, Top bar lap, Class B

Threaded splicer bar length = min. lap length + 1/2" + thread length

\* Epoxy not required on Bar Splicer Assembly components used in conjunction with black bars.

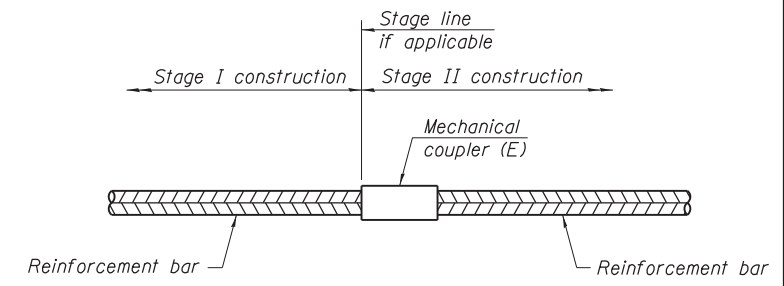
Location	Bar size	No. assemblies required	Table for minimum lap length
S. Abutment	#5	** 21	Table 4
S. Abutment	#4	** 5	Table 4
S. Abutment	#6	** 2	Table 4
S. Abutment	#6	** 4	Table 3
S. Abutment	#5	** 13	Table 4
S. Abutment	#5	** 13	Table 3
N. Abutment	#5	** 23	Table 4
N. Abutment	#4	** 5	Table 4
N. Abutment	#6	** 4	Table 4
N. Abutment	#5	** 8	Table 3
N. Abutment	#5	** 13	Table 4
N. Abutment	#5	** 13	Table 3
S. Approach Slab	#4	** 25	Table 4
S. Approach Slab	#5	** 46	Table 3
S. Approach Footing	#5	** 40	Table 3
N. Approach Slab	#4	** 25	Table 4
N. Approach Slab	#5	** 46	Table 3
N. Approach Footing	#5	** 40	Table 3



**INSTALLATION AND SETTING METHODS**

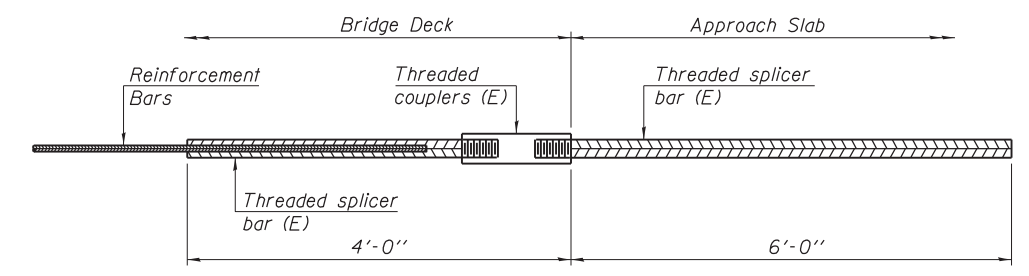
"A" : Set bar splicer assembly by means of a template bolt.  
 "B" : Set bar splicer assembly by nailing to wood forms or cementing to steel forms.  
 (E) : Indicates epoxy coating.

\*\* Bar splicers shall be furnished and paid for during Stage I construction. Bar Splicer coupler ends shall be furnished and installed during Stage I construction (SN 016-7943). Bar splicer rod ends shall be furnished during Stage I construction and stored by the Department until installation during Stage II construction (SN 016-7942). The Contractor shall obtain the Bar Splicer rod ends from the Department and install them during Stage II construction. Bar Splicers will be paid for at the unit cost per each Bar Splicer, where each bar splicer includes both the coupler and the rod end. Bar Splicer rod ends will not be measured for payment separately from coupler ends and the cost for installing the Bar Splicer rod ends shall be included with the pay item for Reinforcement Bars, Epoxy Coated during Stage II Construction.



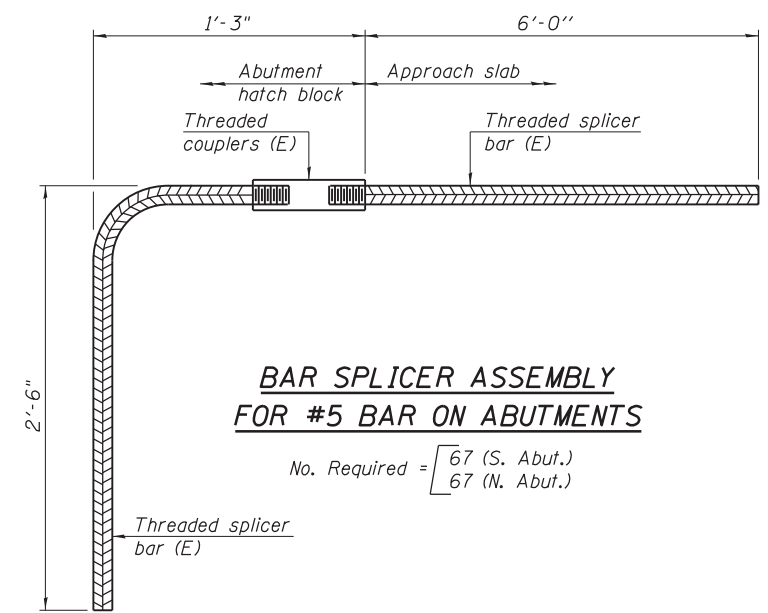
**STANDARD MECHANICAL SPLICER**

Location	Bar size	No. assemblies required



**BAR SPLICER ASSEMBLY FOR #5 BAR ON INTEGRAL OR SEMI-INTEGRAL ABUTMENTS**

No. required =



**BAR SPLICER ASSEMBLY FOR #5 BAR ON ABUTMENTS**

No. Required =  $\begin{cases} 67 \text{ (S. Abut.)} \\ 67 \text{ (N. Abut.)} \end{cases}$

**NOTES**

Splicer bars shall be deformed with threaded ends and have a minimum 60 ksi yield strength.  
 All reinforcement shall be lapped and tied to the splicer bars.  
 Bar splicer assemblies shall be epoxy coated according to the requirements for reinforcement bars. See Section 508 of the Standard Specifications.  
 See approved list of bar splicer assemblies and mechanical splicers for alternatives.

N:\ROSEMONT\11000\CADD\_Sheets\0167942-D168037-025.Bar\_Splicer.dgn

**CHRISTOPHER B. BURKE ENGINEERING, LTD.**  
 8575 W. Higgins Road, Suite 600  
 Rosemont, Illinois 60018  
 (847) 924-8900

USER NAME =	DESIGNED - MM	REVISED
PLOT SCALE =	CHECKED - JMB	REVISED
PLOT DATE =	DRAWN - PDR	REVISED
	CHECKED - MM	REVISED

**STATE OF ILLINOIS  
 DEPARTMENT OF TRANSPORTATION**

**BAR SPLICER ASSEMBLY DETAILS**  
**SB MANNHEIM ROAD BRIDGE - STRUCTURE NO. 016-7942**

F.A. RTE.	SECTION	COUNTY	TOTAL SHEETS	SHEET NO.
330	0105 WRS&HB	COOK	605	387
CONTRACT NO. 60G37				

SHEET NO. S-25 OF S-27 SHEETS

ILLINOIS FED. AID PROJECT