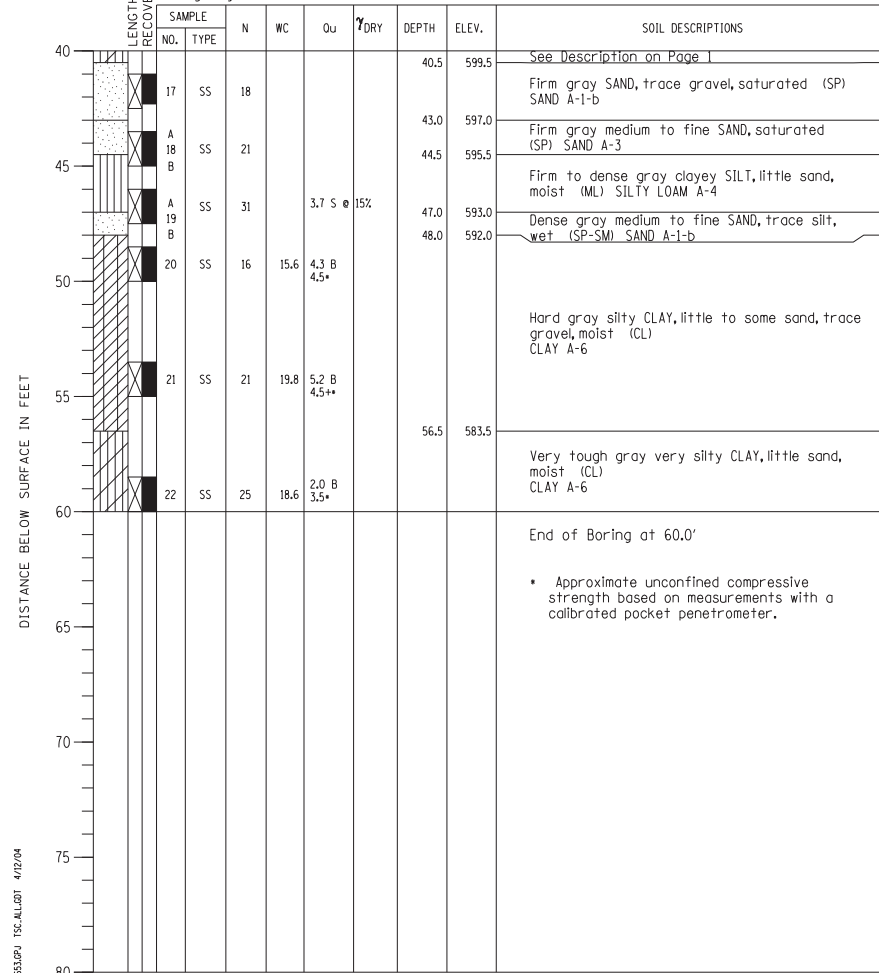


PROJECT Balmoral Avenue Extension - Phase II, Rosemont, Illinois  
 CLIENT Christopher B. Burke Engineering, Ltd., Rosemont, Illinois  
 BORING 17 DATE STARTED 12-11-01 DATE COMPLETED 12-11-01 JOB L-52,653



ELEVATIONS WATER LEVEL OBSERVATIONS  
 GROUND SURFACE 640.0 WHILE DRILLING Dry to 10.0'  
 END OF BORING 580.0 AT END OF BORING Rotary Wash  
 24 HOURS Grouted

Boring 17 was designated B-1 when originally drilled in December 2001.



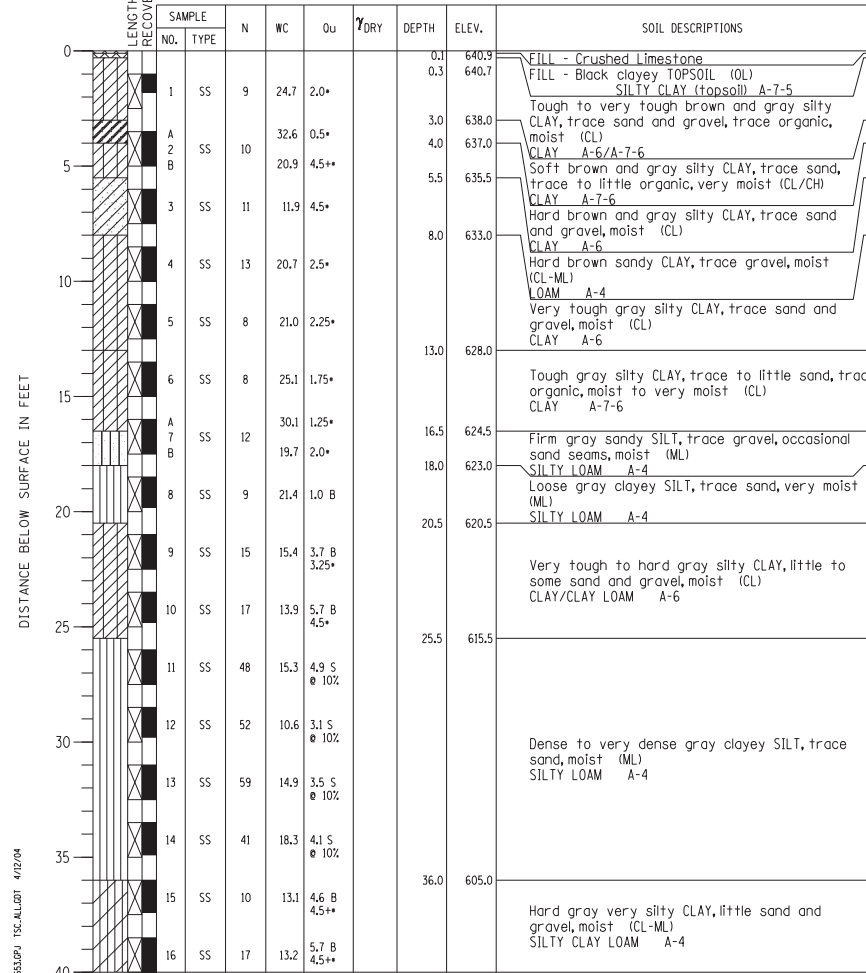
DRILL RIG NO. 144  
 Division lines between deposits represent approximate boundaries between soil types; in-situ, the transition may be gradual.  
 Page 2 of 2

BORING NO. 17  
 Station 75+35.16  
 Offset 54.23' LT

PROJECT Balmoral Avenue Extension - Phase II, Rosemont, Illinois  
 CLIENT Christopher B. Burke Engineering, Ltd., Rosemont, Illinois  
 BORING 18 DATE STARTED 10-9-02 DATE COMPLETED 10-14-02 JOB L-52,653



ELEVATIONS WATER LEVEL OBSERVATIONS  
 GROUND SURFACE 641.0 WHILE DRILLING Dry to 10.0'  
 END OF BORING 581.0 AT END OF BORING Rotary Wash  
 24 HOURS



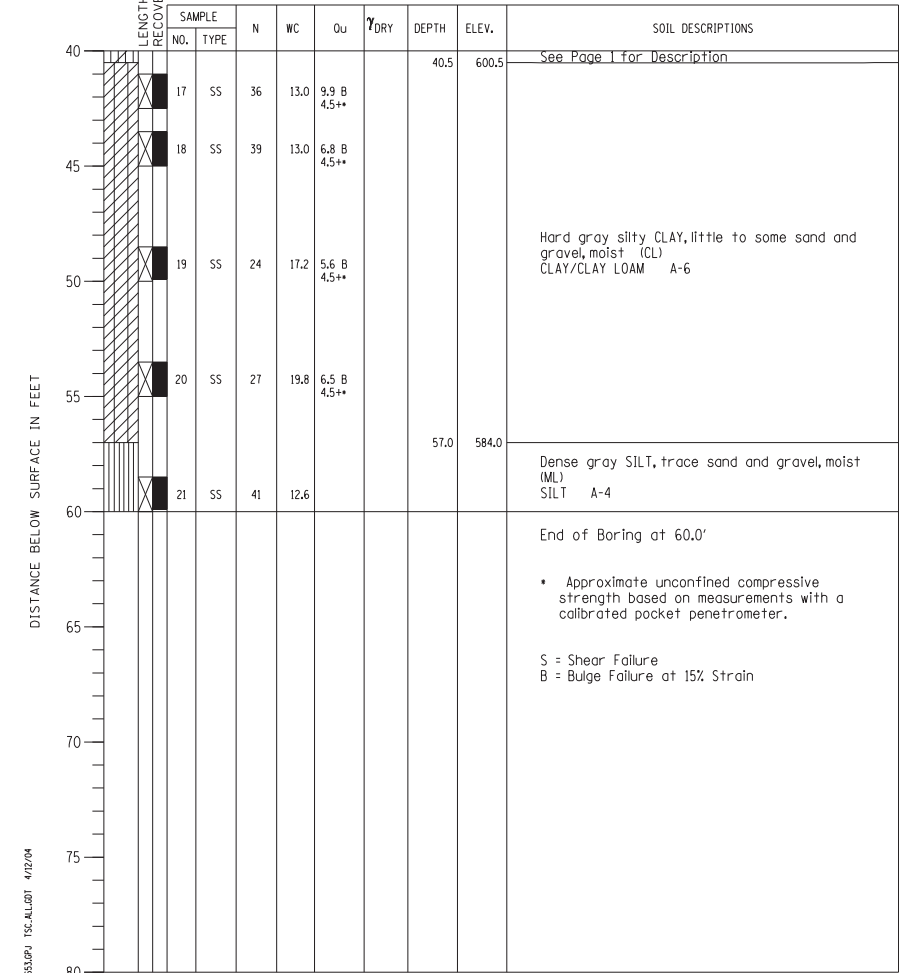
DRILL RIG NO. 144  
 Division lines between deposits represent approximate boundaries between soil types; in-situ, the transition may be gradual.  
 Page 1 of 2

BORING NO. 18  
 Station 74+62.24  
 Offset 12.48' LT

PROJECT Balmoral Avenue Extension - Phase II, Rosemont, Illinois  
 CLIENT Christopher B. Burke Engineering, Ltd., Rosemont, Illinois  
 BORING 18 DATE STARTED 10-9-02 DATE COMPLETED 10-14-02 JOB L-52,653



ELEVATIONS WATER LEVEL OBSERVATIONS  
 GROUND SURFACE 641.0 WHILE DRILLING Dry to 10.0'  
 END OF BORING 581.0 AT END OF BORING Rotary Wash  
 24 HOURS



DRILL RIG NO. 144  
 Division lines between deposits represent approximate boundaries between soil types; in-situ, the transition may be gradual.  
 Page 2 of 2

BORING NO. 18  
 Station 74+62.24  
 Offset 12.48' LT

N:\ROSEMONT\11000\CADD\_Sheets\0167942-D160337-027\_Boring.dgn