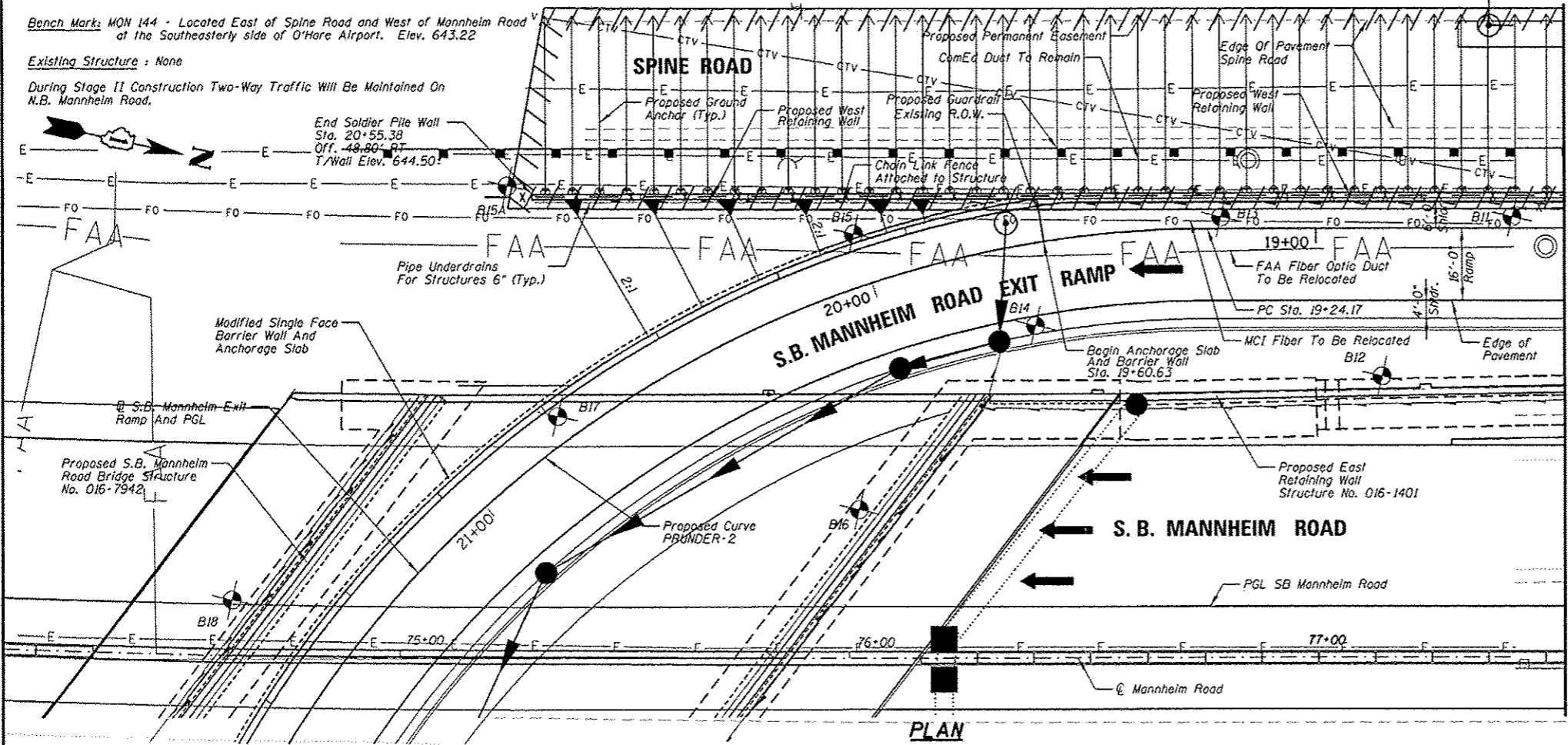


Bench Mark: MON 144 - Located East of Spine Road and West of Mannheim Road at the Southeastly side of O'Hare Airport. Elev. 643.22

Existing Structure: None
 During Stage II Construction Two-Way Traffic Will Be Maintained On N.B. Mannheim Road.



DESIGN SPECIFICATIONS

2002 AASHTO Standard Specifications for Highway Bridges 17th Edition.

LOADING

Live Load Surcharge = 2 ft of Earth

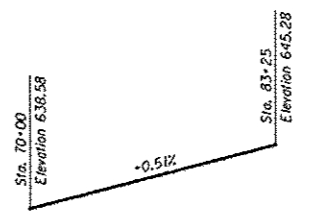
DESIGN STRESSES

FIELD UNITS

- $f_c = 3,500$ psi (Wall Facing)
- $f_c = 4,000$ psi (Encasement)
- $f_y = 60,000$ psi (Reinf.)
- $F_p = 36,000$ psi (HP Piles)
- $F_p = 50,000$ psi (W Piles)

CURVE DATA ALONG S.B. MANNHEIM EXIT RAMP

PROP. CURVE PRUNDER-1	PROP. CURVE PRUNDER-2
PI STA. = 15+19.57	PI STA. = 21+60.04
$\Delta = 4^\circ 00' 14"$ (LT)	$\Delta = 89^\circ 00' 23"$ (LT)
$D = 6^\circ 43' 58"$	$D = 23^\circ 52' 24"$
$R = 851.00'$	$R = 240.00'$
$T = 29.75'$	$T = 235.87'$
$L = 59.47'$	$L = 372.83'$
$E = 0.52'$	$E = 96.51'$
$e = 2.0\%$	$e = -6.0\%$
$T.R. = 0'$	$T.R. = 0'$
$S.E. RUN = 0'$	$S.E. RUN = 97'$
P.C. STA. = 14+89.82	P.C. STA. = 19+24.17
P.T. STA. = 15+49.29	P.T. STA. = 22+97.00

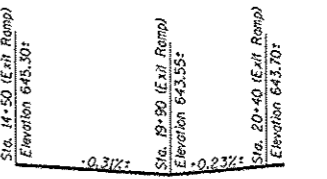


PROFILE GRADE - S.B. MANNHEIM ROAD

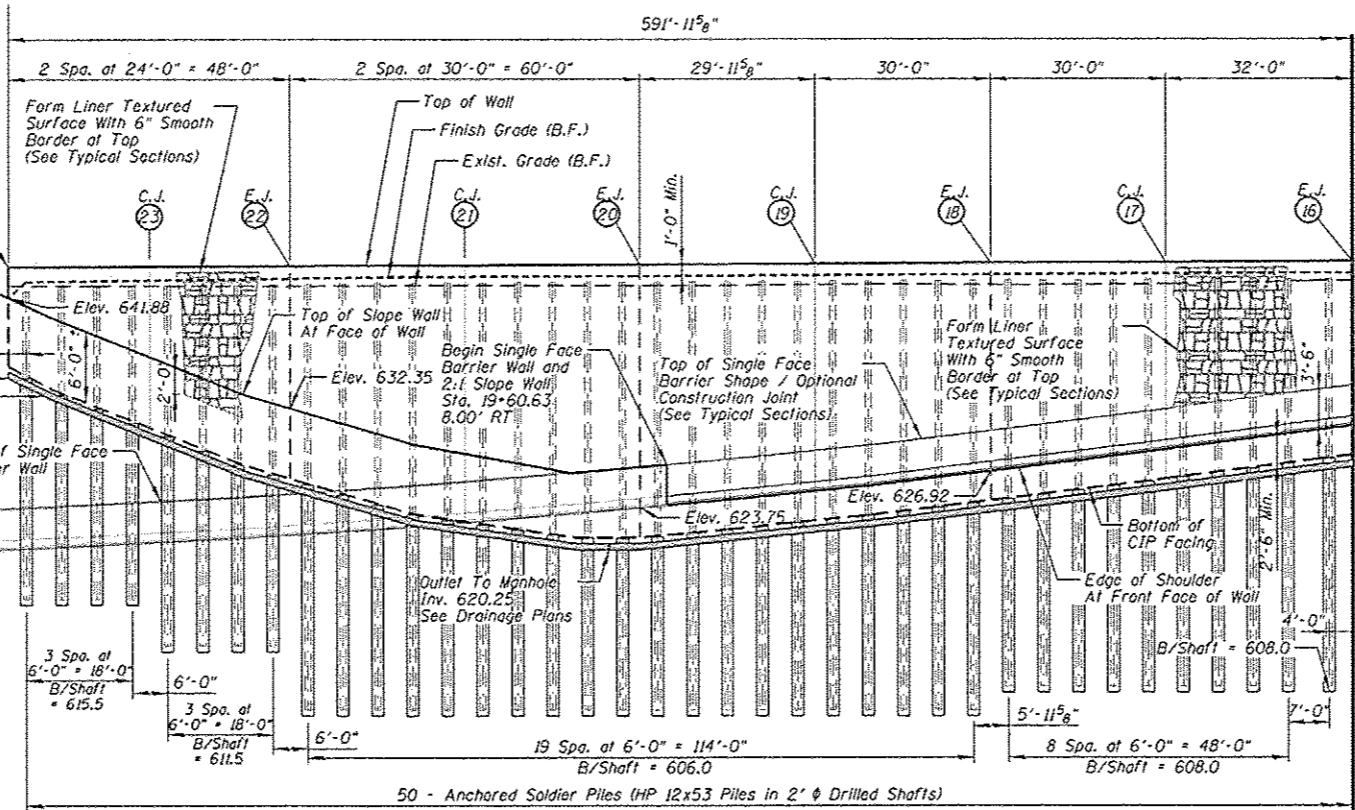
PROFILE GRADE - S.B. MANNHEIM ROAD EXIT RAMP

Mark	Station	Offset	T/Wall Elevation	B/Facing Elevation
1	14+82.87	9.03' RT	645.42	640.50
2	14+88.11	8.22' RT	646.48	640.48
3	15+06.67	7.08' RT	646.32	640.32
4	15+30.47	6.21' RT	646.01	640.01
5	15+54.34	6.00' RT	645.60	639.60
6	15+57.00	6.00' RT	645.55	639.55
7	15+78.34	6.00' RT	645.51	639.10
8	16+02.34	6.00' RT	645.46	638.51
9	16+26.34	6.00' RT	645.41	637.84
10	16+52.34	6.00' RT	645.36	637.02
11	16+84.34	6.00' RT	645.29	635.99
12	17+16.34	6.00' RT	645.23	634.88
13	17+48.34	6.00' RT	645.16	633.51
14	17+80.34	6.00' RT	645.10	631.93
15	18+12.34	6.00' RT	645.03	630.20
16	18+44.34	6.00' RT	644.97	628.32
17	18+76.34	6.00' RT	644.90	626.30
18	19+06.34	6.00' RT	644.84	624.42
19	19+36.30	6.30' RT	644.78	622.67
20	19+64.77	10.28' RT	644.72	621.25
21	19+92.44	17.04' RT	644.66	622.63
22	20+18.37	27.02' RT	644.60	626.34
23	20+37.60	37.09' RT	644.55	630.89
24	20+55.38	48.80' RT	644.50	636.00

NOTE: All Offsets Are Measured From The Proposed Baseline Of S.B. Mannheim Road Exit Ramp To The Front Face Of The Retaining Wall At The Base Of Wall

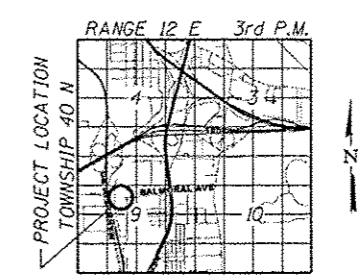


PROFILE GRADE - SPINE ROAD



ELEVATION

(Chain Link Fence Attached to Structure Omitted For Clarity)



LOCATION SKETCH

GENERAL PLAN AND ELEVATION WEST RETAINING WALL SOUTHBOUND EXIT RAMP E.A.P. RTE. 330-SEC 0105 WRS&HB COOK COUNTY STRUCTURE NO. 016-1400

APPROVED
For Structural Adequacy Only

Carl Poyner
Engineer of Bridges & Structures



Majid Mobasseri
10/18/12
MAJID MOBASSERI
ILLINOIS REGISTRATION NO. 081-005058
STRUCTURAL ENGINEER
EXPIRATION DATE: 11/30/14

USER NAME	DESIGNED	REVISIONS
JMB	JMB	REVISIONS
MM	MM	REVISIONS
PDR	PDR	REVISIONS
MM	MM	REVISIONS

STATE OF ILLINOIS DEPARTMENT OF TRANSPORTATION

GENERAL PLAN AND ELEVATION WEST RETAINING WALL - STRUCTURE NO. 016-1400

F.A. RTE.	SECTION	COUNTY	TOTAL SHEETS	SHEET NO.
330	0105 WRS&HB	COOK	605	390

CONTRACT NO. 60G3T
ILLINOIS FED. AID PROJECT