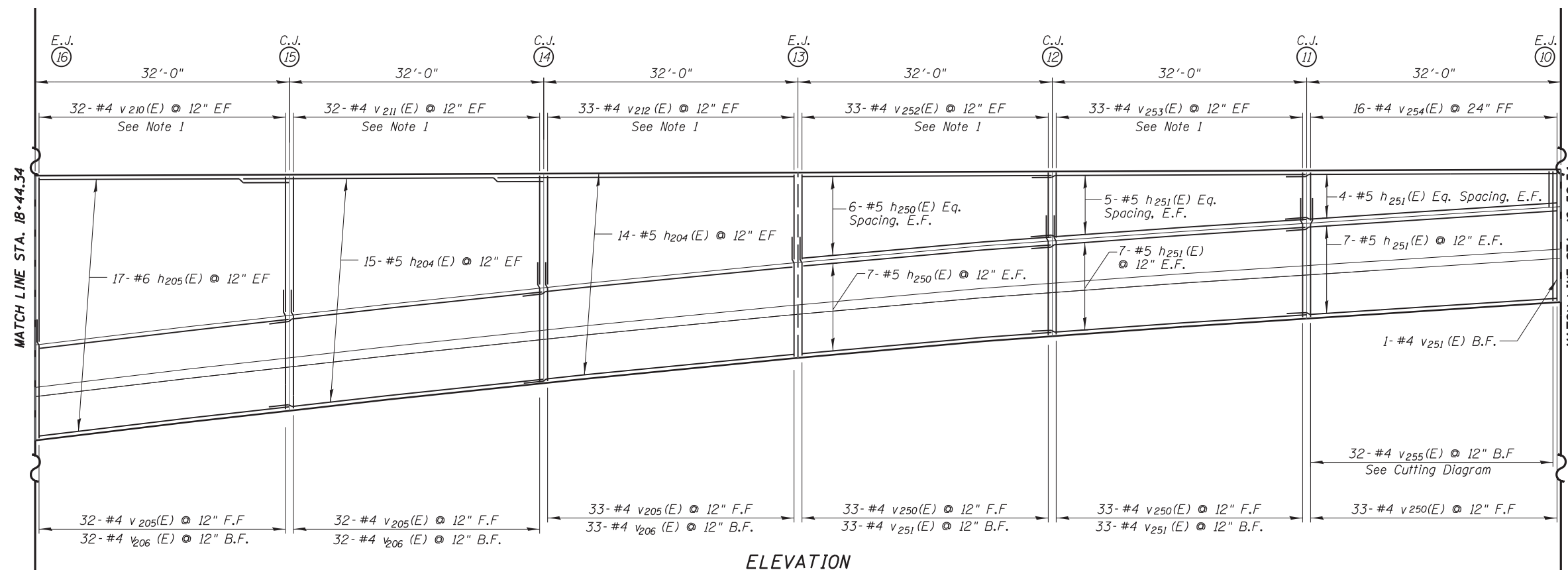


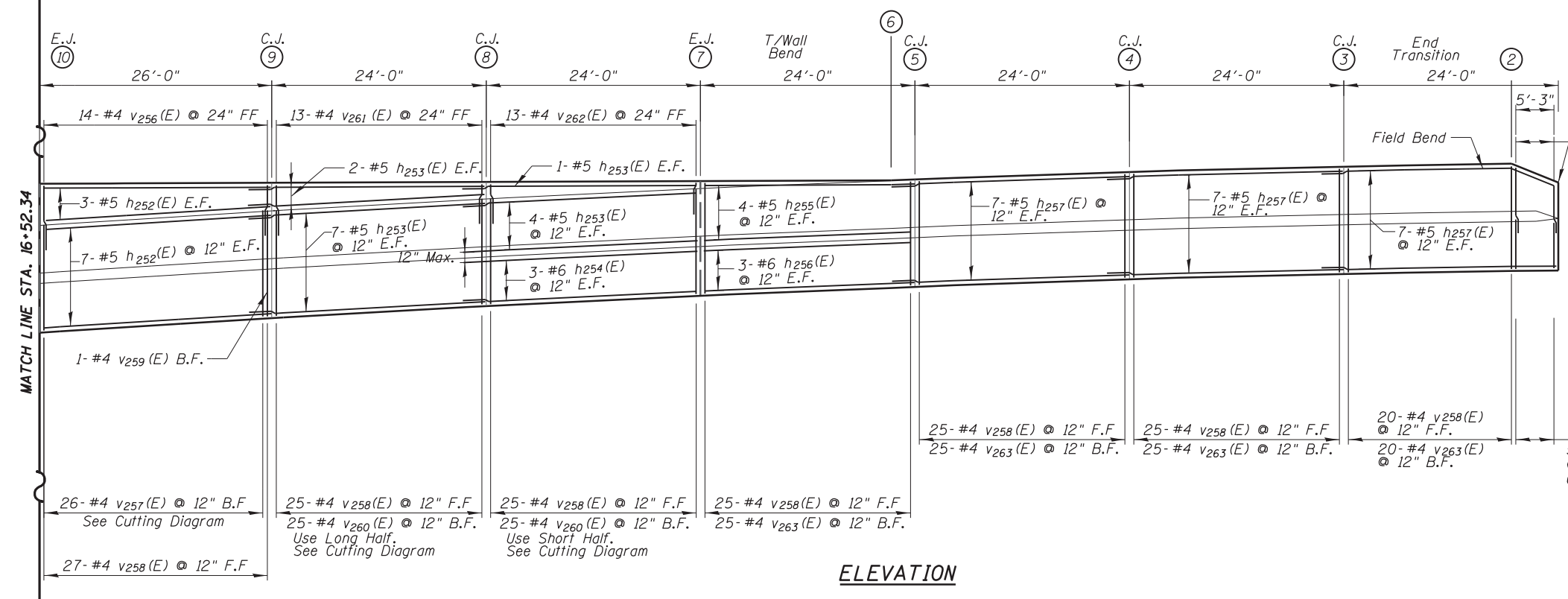
BILL OF MATERIAL

Bar	No.	Size	Length	Shape
h200(E)	25	#5	23'-10"	————
h201(E)	34	#5	27'-6"	————
h202(E)	134	#5	29'-10"	————
h203(E)	94	#5	33'-6"	————
h204(E)	96	#5	35'-6"	————
h205(E)	34	#6	31'-10"	————
h207(E)	6	#5	24'-0"	————
h250(E)	26	#5	31'-10"	————
h251(E)	46	#5	35'-6"	————
h252(E)	20	#5	25'-10"	————
h253(E)	28	#5	27'-6"	————
h254(E)	6	#6	28'-3"	————
h255(E)	8	#5	23'-10"	————
h256(E)	6	#6	23'-10"	————
h257(E)	42	#5	27'-6"	————
v200(E)	25	#4	21'-8"	————
v201(E)	24	#4	31'-2"	————
v202(E)	31	#4	39'-4"	————
v203(E)	30	#4	44'-10"	————
v204(E)	30	#4	33'-2"	————
v205(E)	206	#4	8'-1"	}
v206(E)	236	#4	8'-0"	————
v207(E)	31	#4	30'-2"	————
v208(E)	31	#4	26'-8"	————
v209(E)	32	#4	22'-8"	————
v210(E)	32	#4	18'-10"	————
v211(E)	32	#4	15'-6"	————
v212(E)	33	#4	12'-6"	————
v215(E)	14	#4	5'-11"	}
v250(E)	99	#4	8'-1"	}
v251(E)	67	#4	8'-0"	————
v252(E)	33	#4	9'-8"	————
v253(E)	33	#4	7'-4"	————
v254(E)	16	#4	2'-0"	————
v255(E)	16	#4	17'-0"	————
v256(E)	14	#4	4'-0"	————
v257(E)	13	#4	15'-1"	————
v258(E)	172	#4	5'-11"	}
v259(E)	1	#4	7'-2"	————
v260(E)	25	#4	13'-2"	————
v261(E)	13	#4	2'-3"	————
v262(E)	13	#4	1'-9"	————
v263(E)	100	#4	5'-7"	————
v264(E)	5	#4	4'-5"	┌
Concrete Structures			Cu. Yd.	384.9
Reinforcement Bars, Epoxy Coated			Pound	31,470



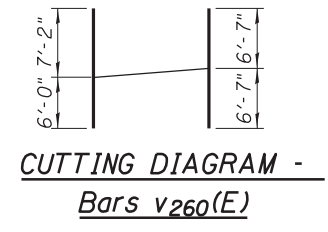
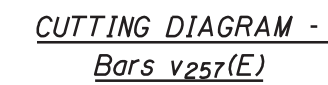
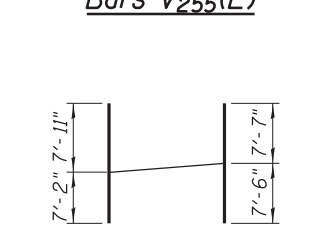
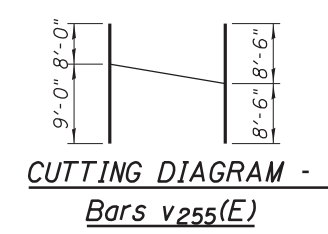
ELEVATION

Notes:
1. Order Bars Full Length, Cut to Fit and Use Remainder on Back Face.



ELEVATION

① Start Soldier Pile Wall Sta. 14+82.87 Off. 9.03' RT T/Wall Elev. 645.42



CUTTING DIAGRAM - Bars v260(E)

CUTTING DIAGRAM - Bars v257(E)

Note: See Sheet S-1 for Stations And Elevations At Joints.

N:\ROSEMONT\11000\CADD_Sheets\1166037-shr-wal-1-95-cbd.dgn

CHRISTOPHER B. BURKE ENGINEERING, LTD.
8575 W. Higgins Road, Suite 600
Rosemont, Illinois 60018
(847) 924-6500

USER NAME =	DESIGNED - JMB	REVISED
PLOT SCALE =	CHECKED - MM	REVISED
PLOT DATE =	DRAWN - PDR	REVISED
	CHECKED - MM	REVISED

**STATE OF ILLINOIS
DEPARTMENT OF TRANSPORTATION**

**ELEVATION AND DETAILS
WEST RETAINING WALL - STRUCTURE NO. 016-1400**

SHEET NO. S-5 OF S-13 SHEETS

F.A. RTE.	SECTION	COUNTY	TOTAL SHEETS	SHEET NO.
330	0105 WRS&HB	COOK	605	394
				CONTRACT NO. 60G37
ILLINOIS FED. AID PROJECT				