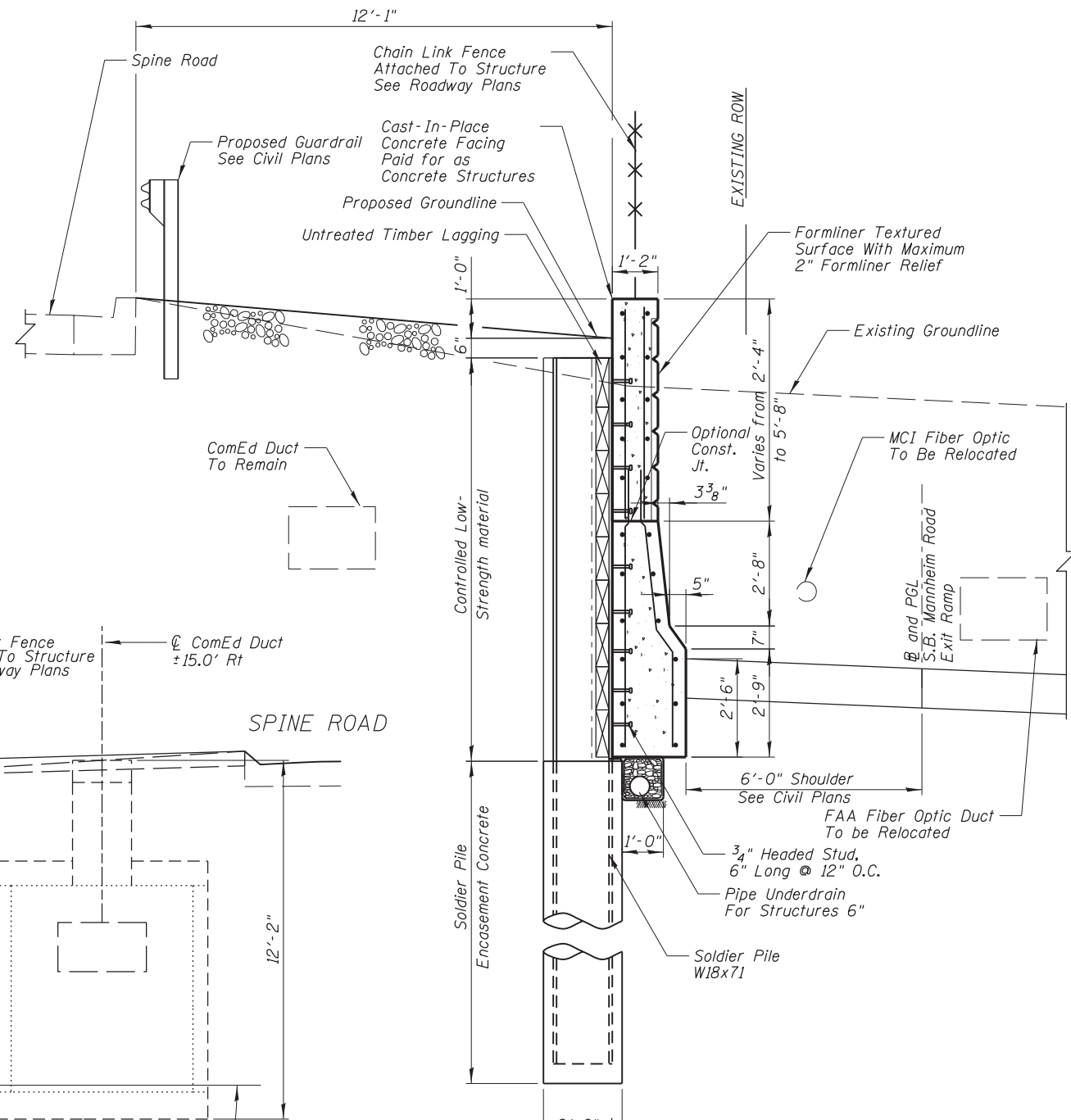
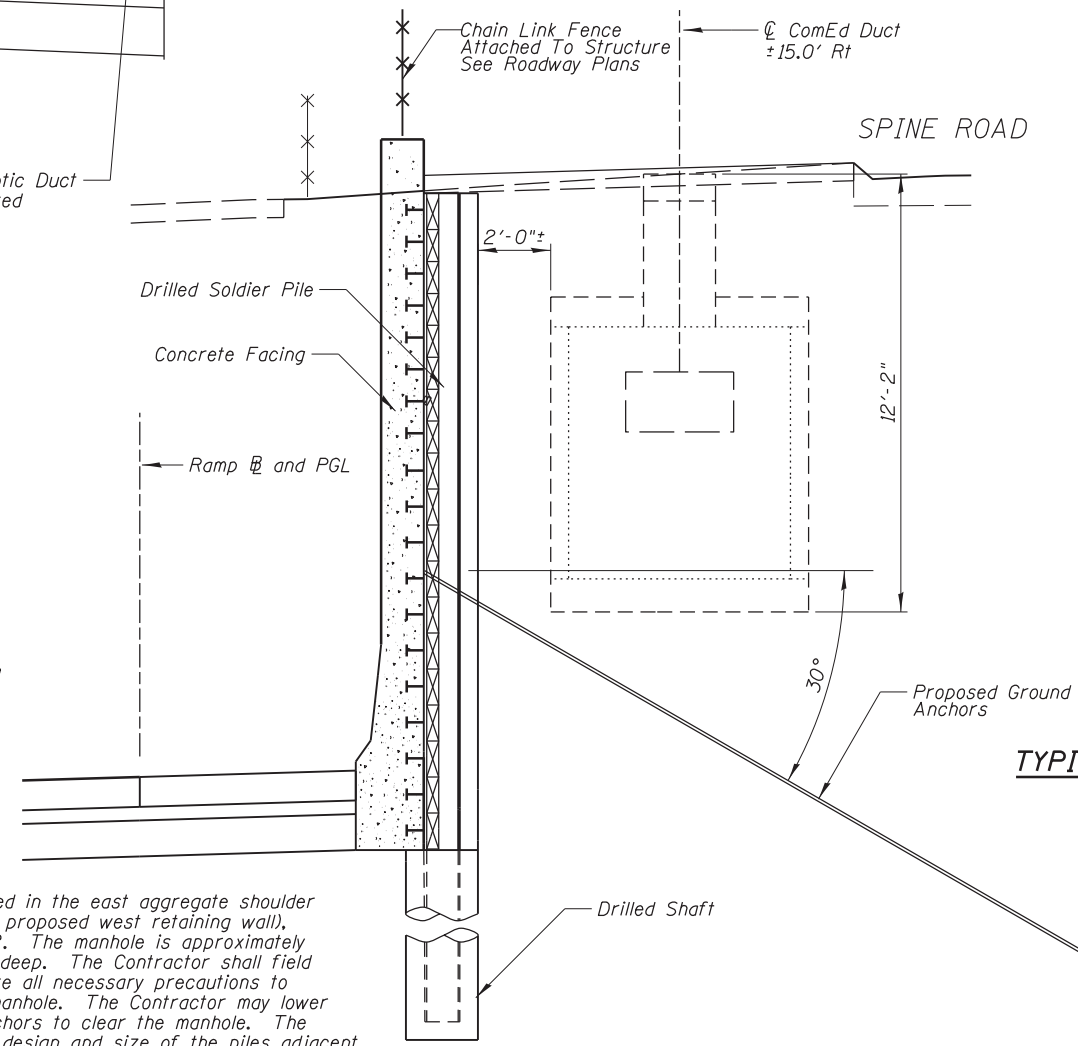


TYPICAL WALL SECTION - STA. 15+78.34 TO STA. 16+52.34



TYPICAL WALL SECTION - STA. 16+52.34 TO STA. 17+48.34



WALL SECTION - STA. 19+12±

NOTE:
A ComEd manhole is located in the east aggregate shoulder of Spine Road (behind the proposed west retaining wall), approximately at Sta 19+12. The manhole is approximately 12' long x 7.5' wide x 9' deep. The Contractor shall field locate the manhole and take all necessary precautions to avoid any damage to the manhole. The Contractor may lower the location of tieback anchors to clear the manhole. The Contractor may revise the design and size of the piles adjacent to the manhole as required.

N:\ROSEMONT\11000\CADD_Sheets\DI166037-shr-ww1-07-cb.dgn

CHRISTOPHER B. BURKE ENGINEERING, LTD.
8575 W. Higgins Road, Suite 600
Rosemont, Illinois 60018
(847) 924-6500

USER NAME =	DESIGNED - JMB	REVISED
PLOT SCALE =	CHECKED - MM	REVISED
PLOT DATE =	DRAWN - PDR	REVISED
	CHECKED - MM	REVISED

**STATE OF ILLINOIS
DEPARTMENT OF TRANSPORTATION**

**SECTIONS
WEST RETAINING WALL - STRUCTURE NO. 016-1400**

SHEET NO. S-7 OF S-13 SHEETS

F.A. RTE.	SECTION	COUNTY	TOTAL SHEETS	SHEET NO.
330	0105 WRS&HB	COOK	605	396
CONTRACT NO. 60G37				

ILLINOIS FED. AID PROJECT