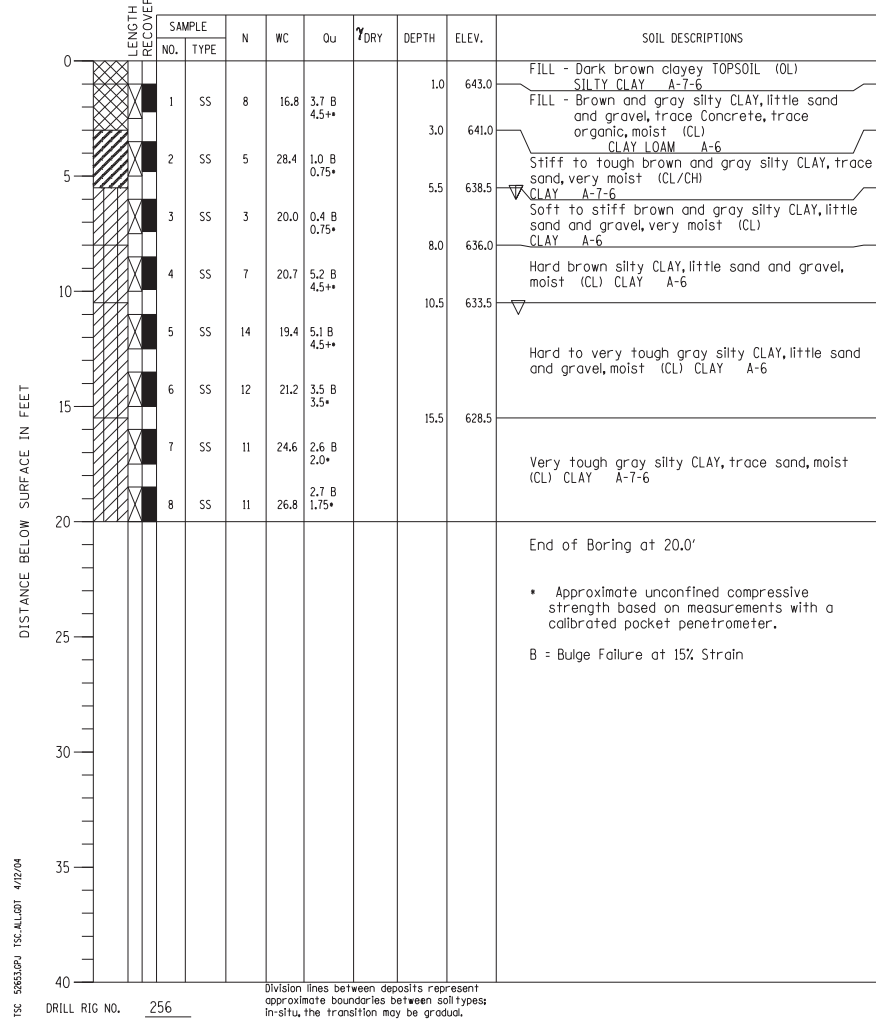


PROJECT Balmoral Avenue Extension - Phase II, Rosemont, Illinois
 CLIENT Christopher B. Burke Engineering, Ltd., Rosemont, Illinois
 BORING 3 DATE STARTED 7-19-02 DATE COMPLETED 7-19-02 JOB L-52,653



ELEVATIONS WATER LEVEL OBSERVATIONS
 GROUND SURFACE 644.0 WHILE DRILLING 6.0'
 END OF BORING 624.0 AT END OF BORING 11.0'
 24 HOURS

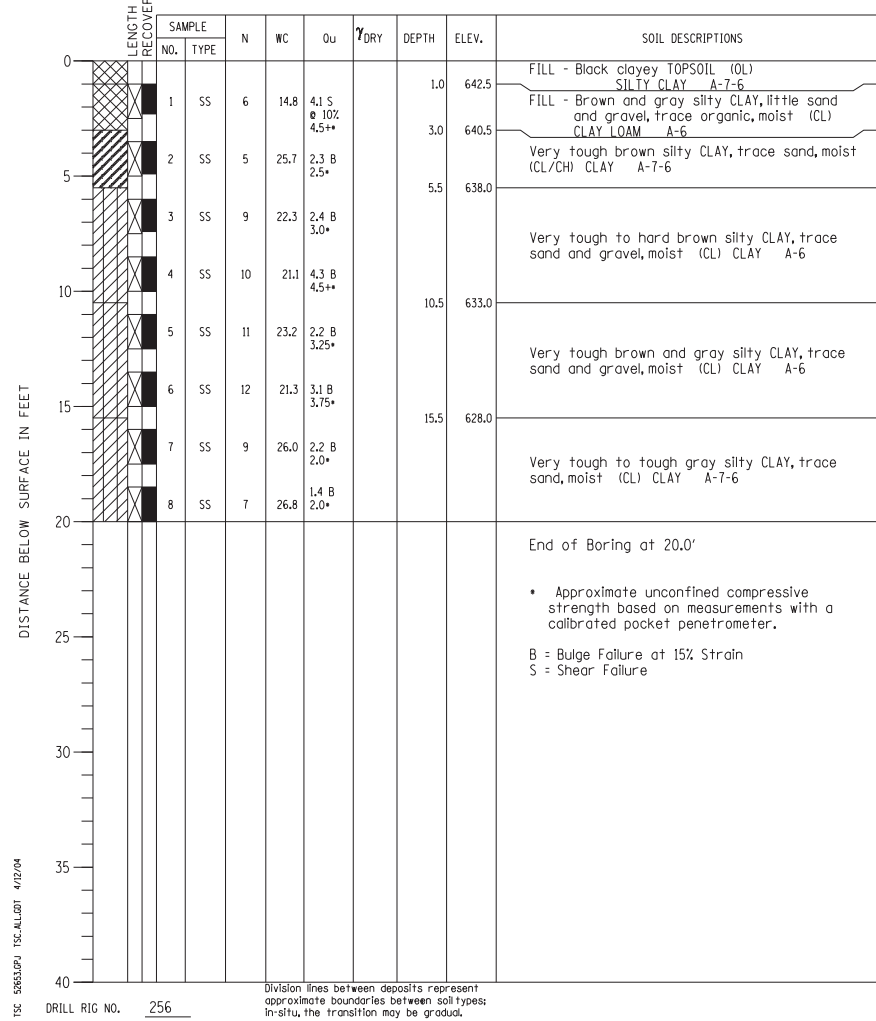


BORING NO. 3
 Station 15+56.10
 Offset 2.55' RT

PROJECT Balmoral Avenue Extension - Phase II, Rosemont, Illinois
 CLIENT Christopher B. Burke Engineering, Ltd., Rosemont, Illinois
 BORING 5 DATE STARTED 7-19-02 DATE COMPLETED 7-19-02 JOB L-52,653



ELEVATIONS WATER LEVEL OBSERVATIONS
 GROUND SURFACE 643.5 WHILE DRILLING Dry
 END OF BORING 623.5 AT END OF BORING Dry
 24 HOURS

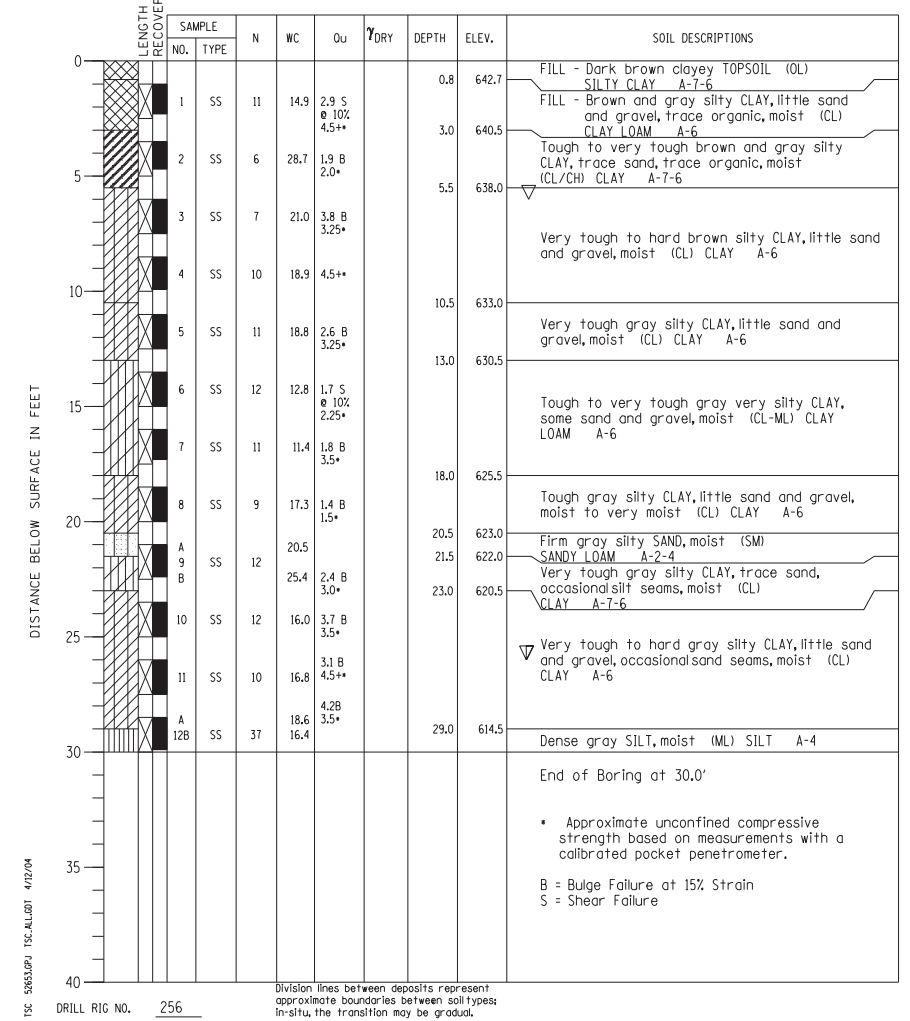


BORING NO. 5
 Station 16+31.10
 Offset 2.56' RT

PROJECT Balmoral Avenue Extension - Phase II, Rosemont, Illinois
 CLIENT Christopher B. Burke Engineering, Ltd., Rosemont, Illinois
 BORING 7 DATE STARTED 7-19-02 DATE COMPLETED 7-19-02 JOB L-52,653



ELEVATIONS WATER LEVEL OBSERVATIONS
 GROUND SURFACE 643.5 WHILE DRILLING 26.0'
 END OF BORING 613.5 AT END OF BORING 6.0'
 24 HOURS



BORING NO. 7
 Station 17+06.10
 Offset 2.57' RT

N:\ROSEMONT\11000\CADD_Sheets\DI160037-shr-well-11-cb.dgn

CHRISTOPHER B. BURKE ENGINEERING, LTD.
 8575 W. Higgins Road, Suite 600
 Rosemont, Illinois 60018
 (847) 924-6500

USER NAME =	DESIGNED - JMB	REVISED
CHECKED - MM	REVISIONS	
PLOT SCALE =	DRAWN - PDR	REVISED
PLOT DATE =	CHECKED - MM	REVISED

STATE OF ILLINOIS
 DEPARTMENT OF TRANSPORTATION

BORING LOGS
 WEST RETAINING WALL - STRUCTURE NO. 016-1400

SHEET NO. S-11 OF S-13 SHEETS

F.A. RTE.	SECTION	COUNTY	TOTAL SHEETS	SHEET NO.
330	0105 WRS&HB	COOK	605	400
CONTRACT NO. 60G37				
ILLINOIS FED. AID PROJECT				