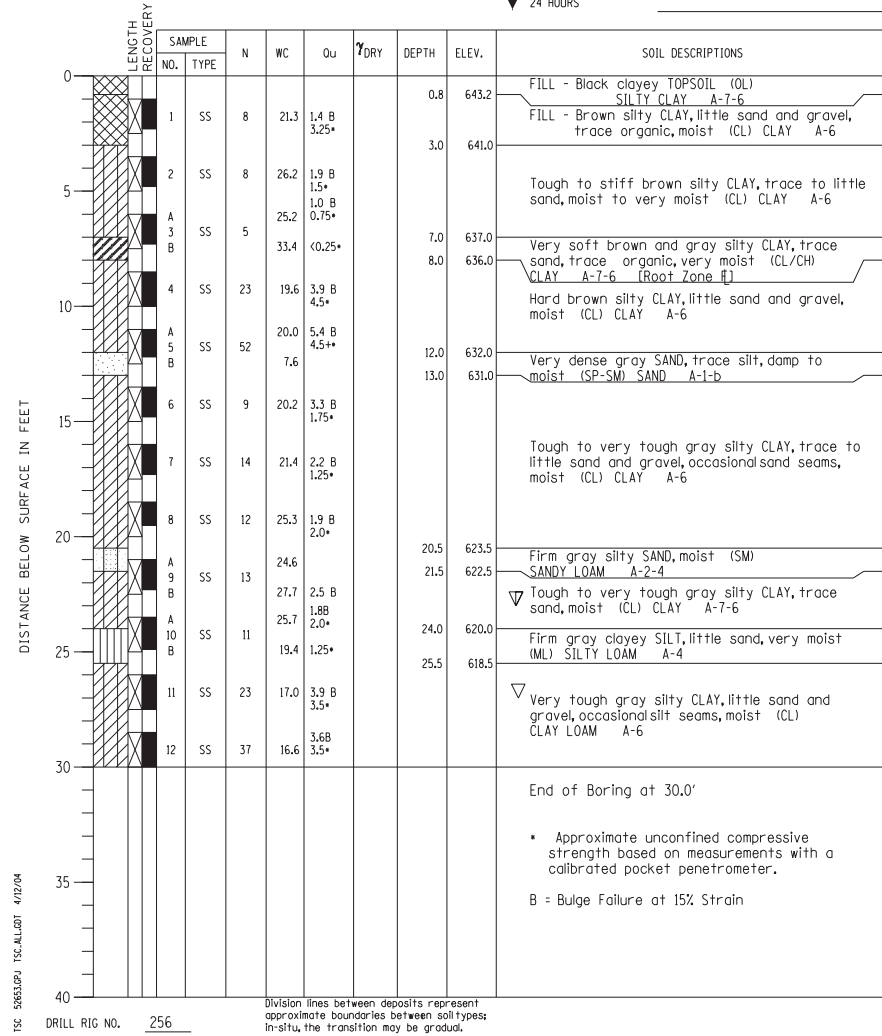


PROJECT Balmoral Avenue Extension - Phase II, Rosemont, Illinois
 CLIENT Christopher B. Burke Engineering, Ltd., Rosemont, Illinois



BORING 9 DATE STARTED 7-24-02 DATE COMPLETED 7-24-02 JOB L-52,653
 ELEVATIONS
 GROUND SURFACE 644.0
 END OF BORING 614.0
 WATER LEVEL OBSERVATIONS
 WHILE DRILLING 23.0'
 AT END OF BORING 27.0'
 24 HOURS

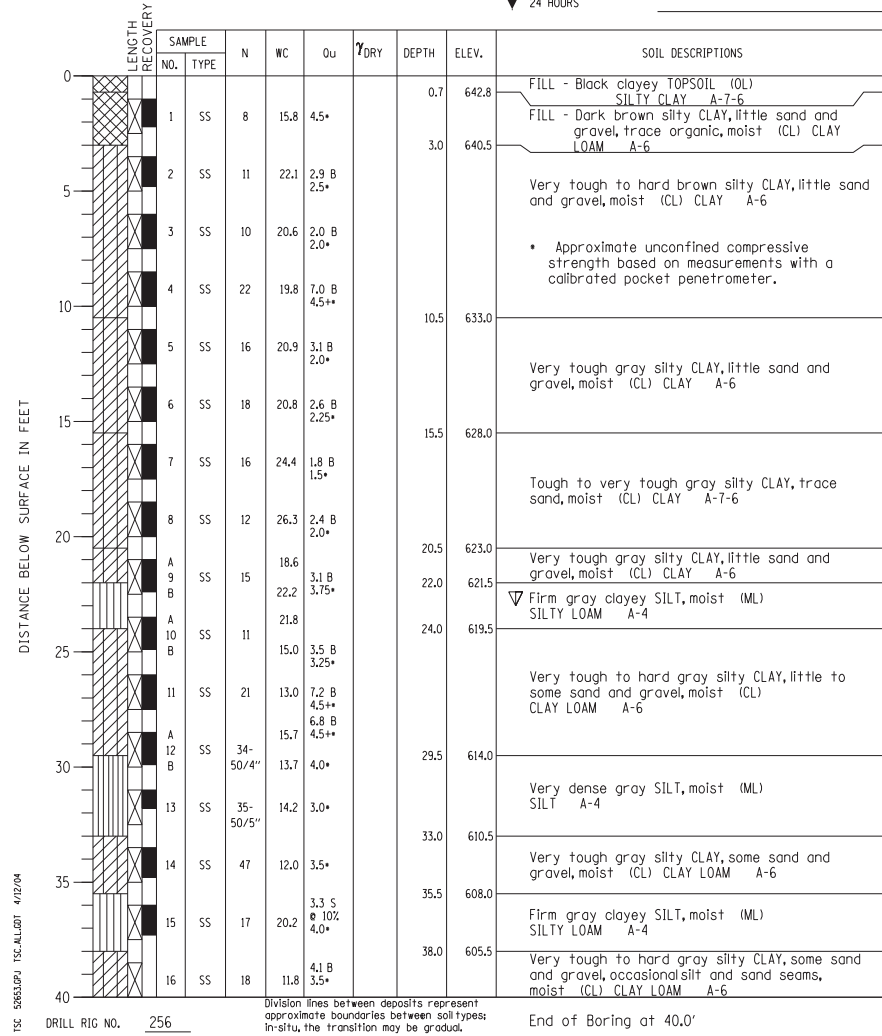


BORING NO. 9
 Station 17+81.10
 Offset 2.58' RT

PROJECT Balmoral Avenue Extension - Phase II, Rosemont, Illinois
 CLIENT Christopher B. Burke Engineering, Ltd., Rosemont, Illinois



BORING 11 DATE STARTED 7-24-02 DATE COMPLETED 7-24-02 JOB L-52,653
 ELEVATIONS
 GROUND SURFACE 643.5
 END OF BORING 603.5
 WATER LEVEL OBSERVATIONS
 WHILE DRILLING 23.0'
 AT END OF BORING Dry
 24 HOURS

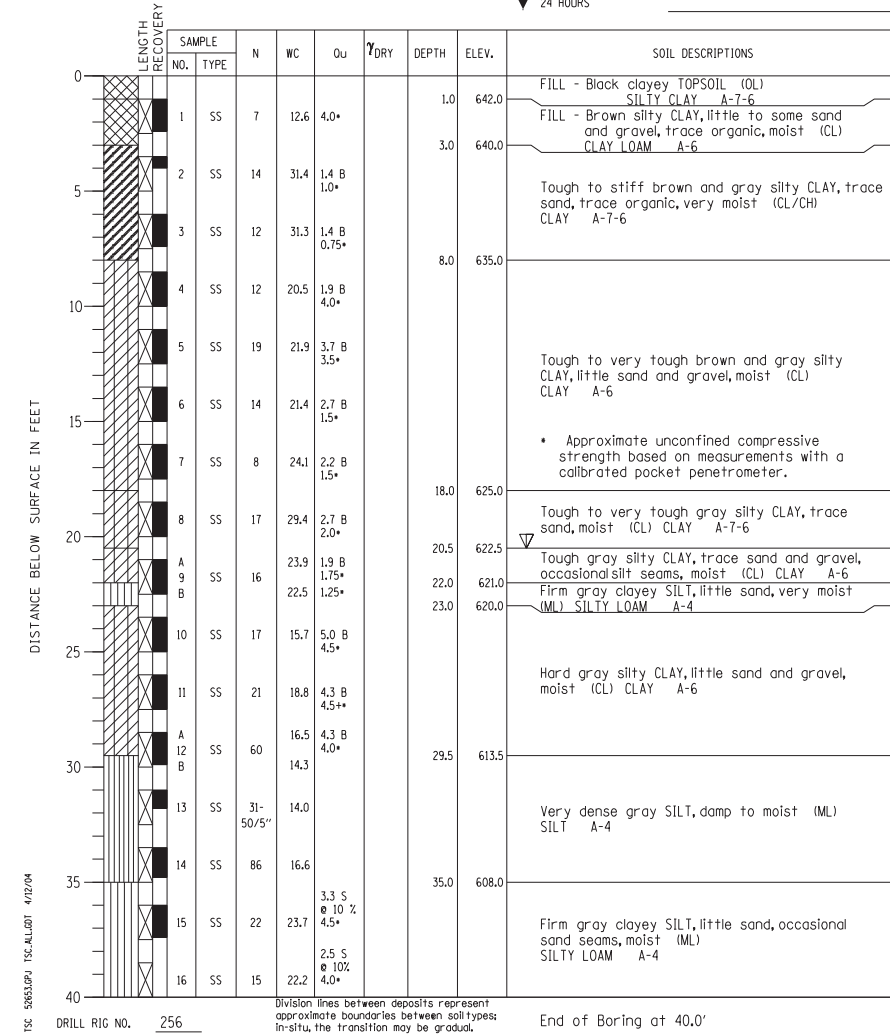


BORING NO. 11
 Station 18+56.10
 Offset 2.57' RT

PROJECT Balmoral Avenue Extension - Phase II, Rosemont, Illinois
 CLIENT Christopher B. Burke Engineering, Ltd., Rosemont, Illinois



BORING 13 DATE STARTED 7-24-02 DATE COMPLETED 7-24-02 JOB L-52,653
 ELEVATIONS
 GROUND SURFACE 643.0
 END OF BORING 603.0
 WATER LEVEL OBSERVATIONS
 WHILE DRILLING 20.5'
 AT END OF BORING Dry
 24 HOURS



BORING NO. 13
 Station 19+21.17
 Offset 2.58' RT

N:\ROSEMONT\11000\CADD_Sheets\DI60637-shr-well-12-cb.dgn

CHRISTOPHER B. BURKE ENGINEERING, LTD.
 8575 W. Higgins Road, Suite 600
 Rosemont, Illinois 60018
 (847) 924-6500

USER NAME =	DESIGNED - JMB	REVISED
PLOT SCALE =	CHECKED - MM	REVISED
PLOT DATE =	DRAWN - PDR	REVISED
	CHECKED - MM	REVISED

STATE OF ILLINOIS
 DEPARTMENT OF TRANSPORTATION

BORING LOGS
 WEST RETAINING WALL - STRUCTURE NO. 016-1400
 SHEET NO. S-12 OF S-13 SHEETS

F.A. RTE.	SECTION	COUNTY	TOTAL SHEETS	SHEET NO.
330	0105 WRS&HB	COOK	605	401
CONTRACT NO. 60G37				
ILLINOIS FED. AID PROJECT				