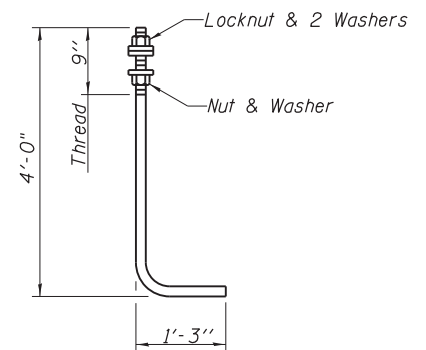
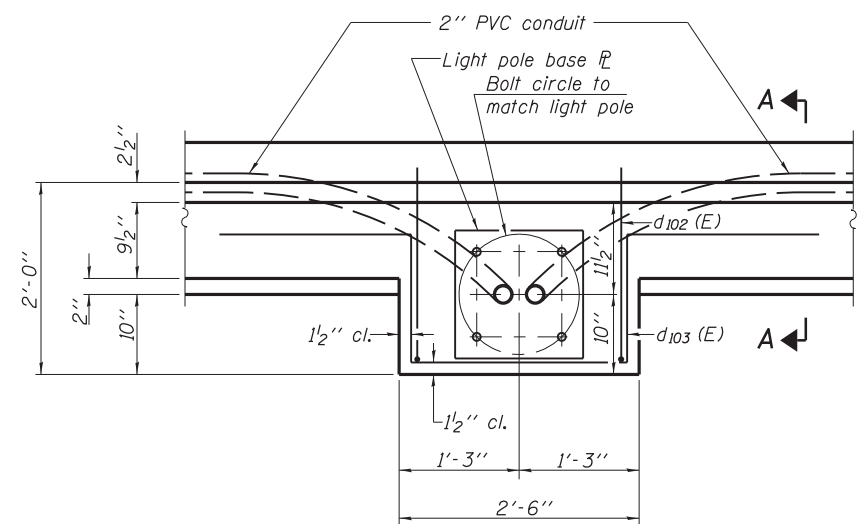


TYPICAL MOMENT SLAB SECTION

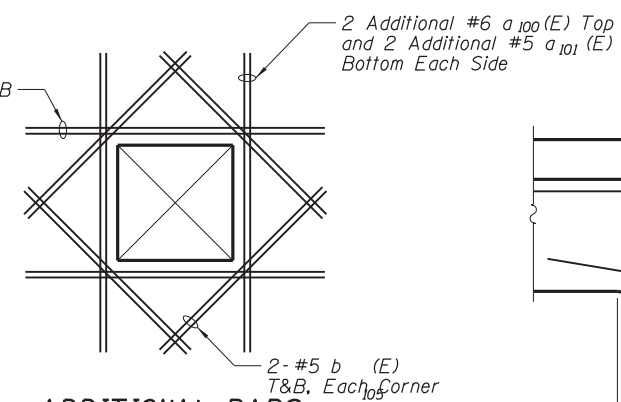


ANCHOR ROD
Diameter as specified for light poles.
(ASTM F 1554 Grade 105) full length
hot dipped galvanized

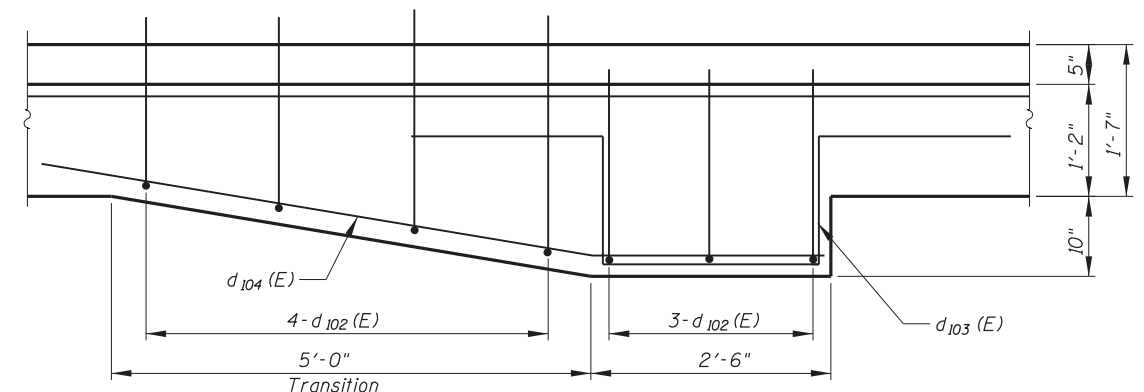


PLAN-PARAPET WITH LIGHT POLE

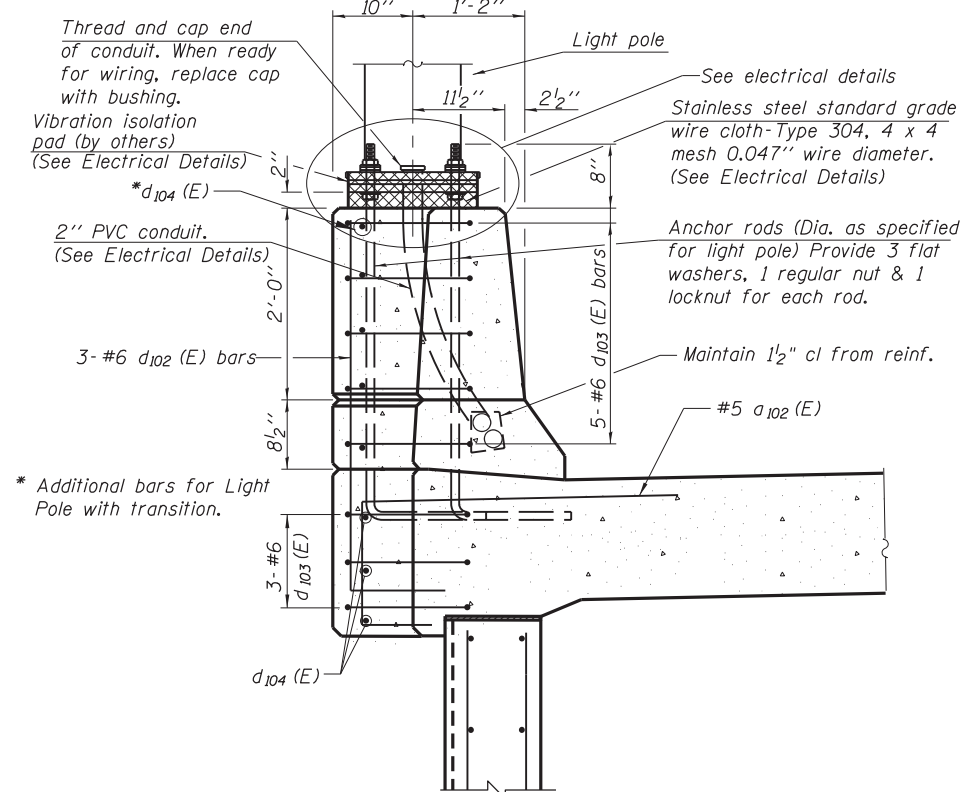
Note: Cost of anchor rods and conduit is included with Concrete Superstructure.



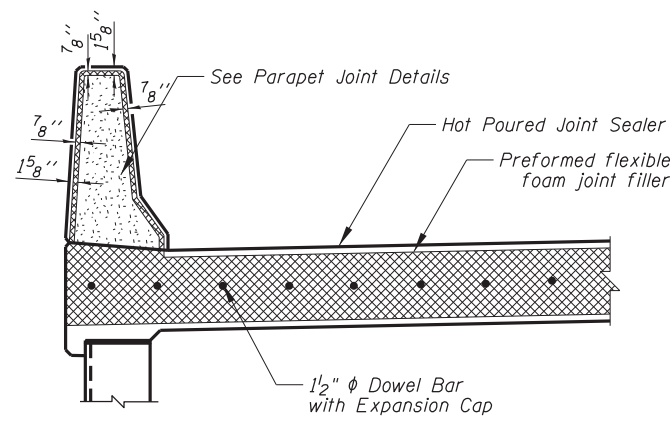
ADDITIONAL BARS AT WALL OPENINGS



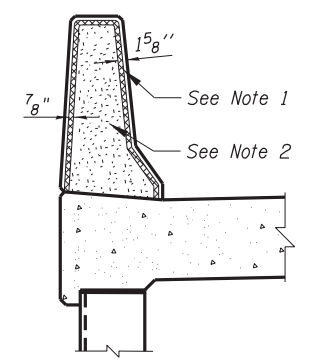
PLAN-PARAPET WITH TRANSITION FOR LIGHT POLE



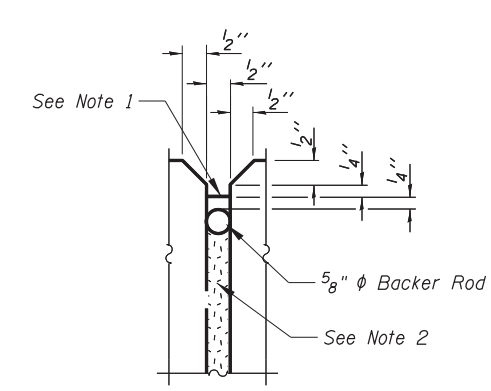
SECTION A-A



TRANSVERSE EXPANSION JOINT DETAIL

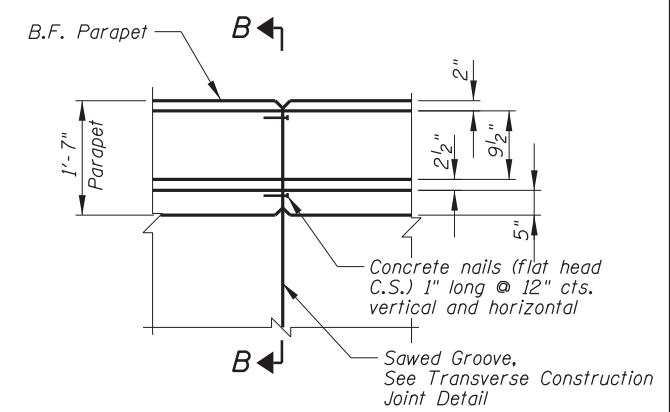


SECTION B-B



PARAPET JOINT DETAILS

- Parapet Joint Notes:**
1. Non-staining gray one component non-sag elastomeric gun grade polyurethane sealant meeting the requirements of ASTM C-920, Type S, Grade NS, Class 25, use T with a 5/8" backer rod.
 2. 1/2" Preformed Self-Expanding Cork Joint Filler according to Article 1051.07 of the Standard Specifications. Cost included with Concrete Superstructure.



PLAN

N:\ROSEMONT\11000\CADD_Sheets\DI160037-shr-ewell-011-cb.dgn

CHRISTOPHER B. BURKE ENGINEERING, LTD.
8575 W. Higgins Road, Suite 600
Rosemont, Illinois 60018
(847) 924-6500

USER NAME =	DESIGNED - JMB	REVISED
PLOT SCALE =	CHECKED - MM	REVISED
PLOT DATE =	DRAWN - PDR	REVISED
	CHECKED - MM	REVISED

**STATE OF ILLINOIS
DEPARTMENT OF TRANSPORTATION**

**PARAPET AND ANCHORAGE SLAB DETAILS
EAST RETAINING WALL - STRUCTURE NO. 016-1401**

SHEET NO. S-11 OF S-14 SHEETS

F.A. RTE.	SECTION	COUNTY	TOTAL SHEETS	SHEET NO.
330	0105 WRS&HB	COOK	605	413
CONTRACT NO. 60G37				
ILLINOIS FED. AID PROJECT				