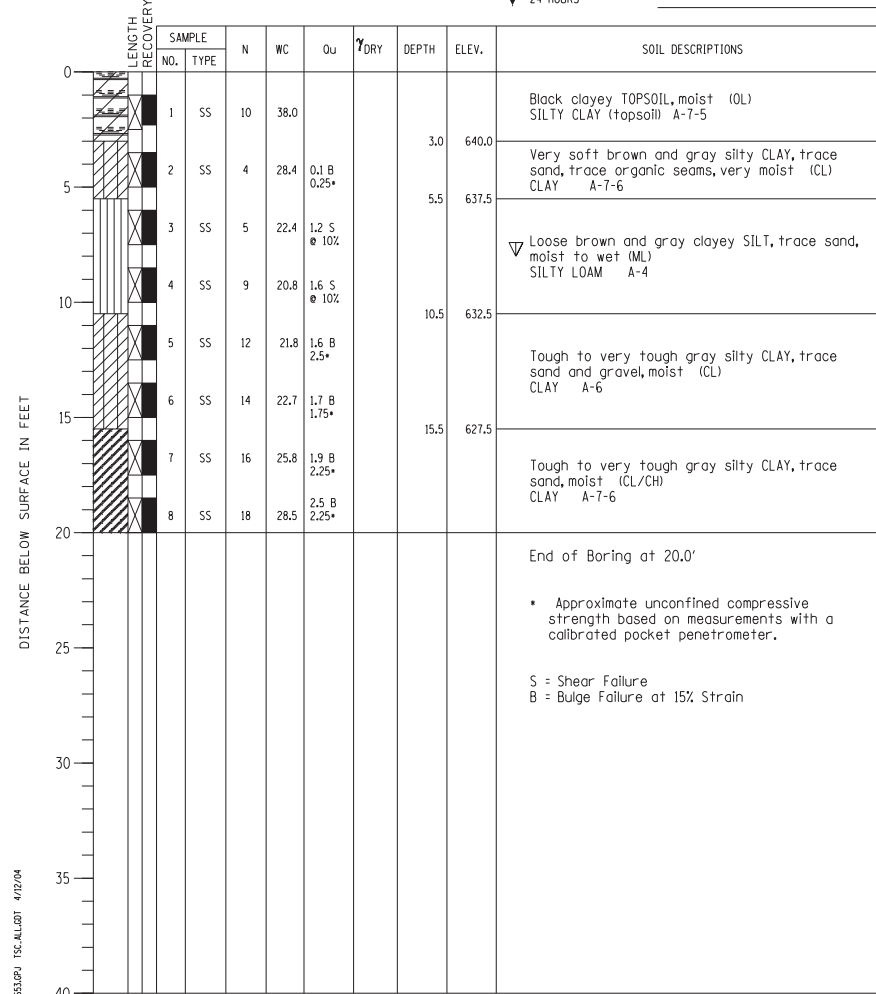


PROJECT Balmoral Avenue Extension - Phase II, Rosemont, Illinois
 CLIENT Christopher B. Burke Engineering, Ltd., Rosemont, Illinois
 BORING 4 DATE STARTED 10-8-02 DATE COMPLETED 10-8-02 JOB L-52,653



ELEVATIONS WATER LEVEL OBSERVATIONS
 GROUND SURFACE 643.0 WHILE DRILLING 8.0'
 END OF BORING 623.0 AT END OF BORING Dry
 24 HOURS

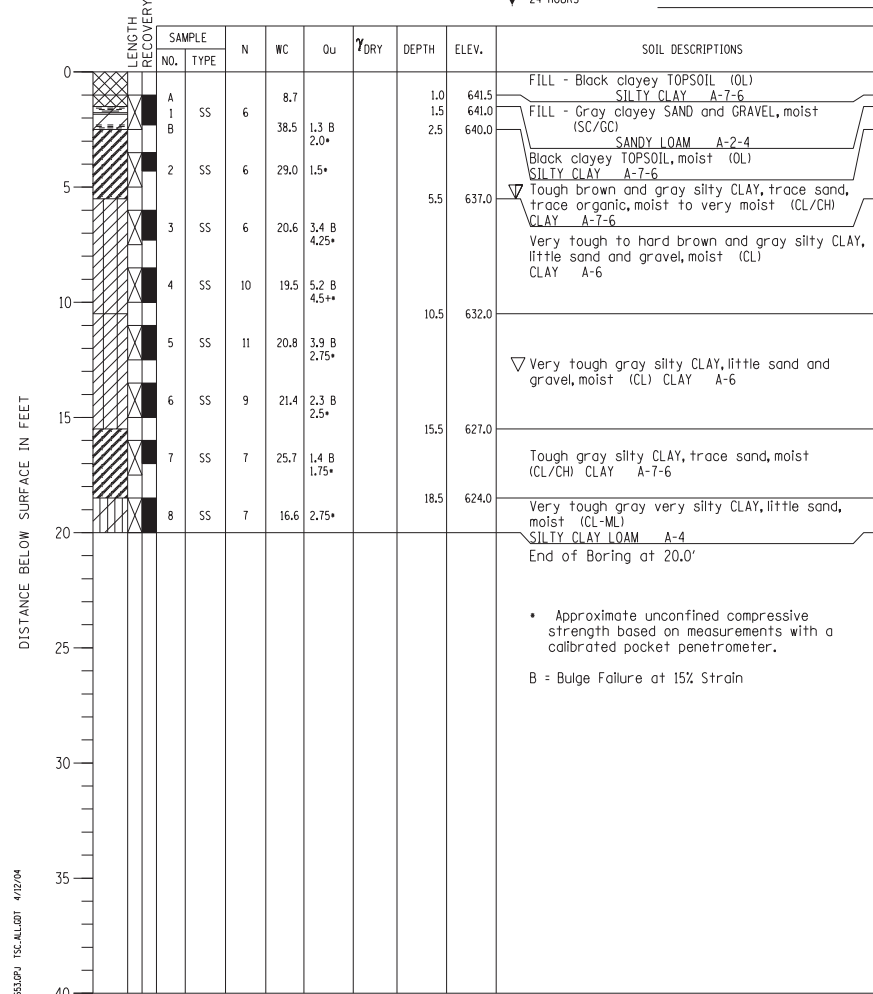


BORING NO. 4
 Station 16+11.11
 Offset 51.82' LT

PROJECT Balmoral Avenue Extension - Phase II, Rosemont, Illinois
 CLIENT Christopher B. Burke Engineering, Ltd., Rosemont, Illinois
 BORING 6 DATE STARTED 7-19-02 DATE COMPLETED 7-19-02 JOB L-52,653



ELEVATIONS WATER LEVEL OBSERVATIONS
 GROUND SURFACE 642.5 WHILE DRILLING 5.5'
 END OF BORING 622.5 AT END OF BORING 13.0'
 24 HOURS

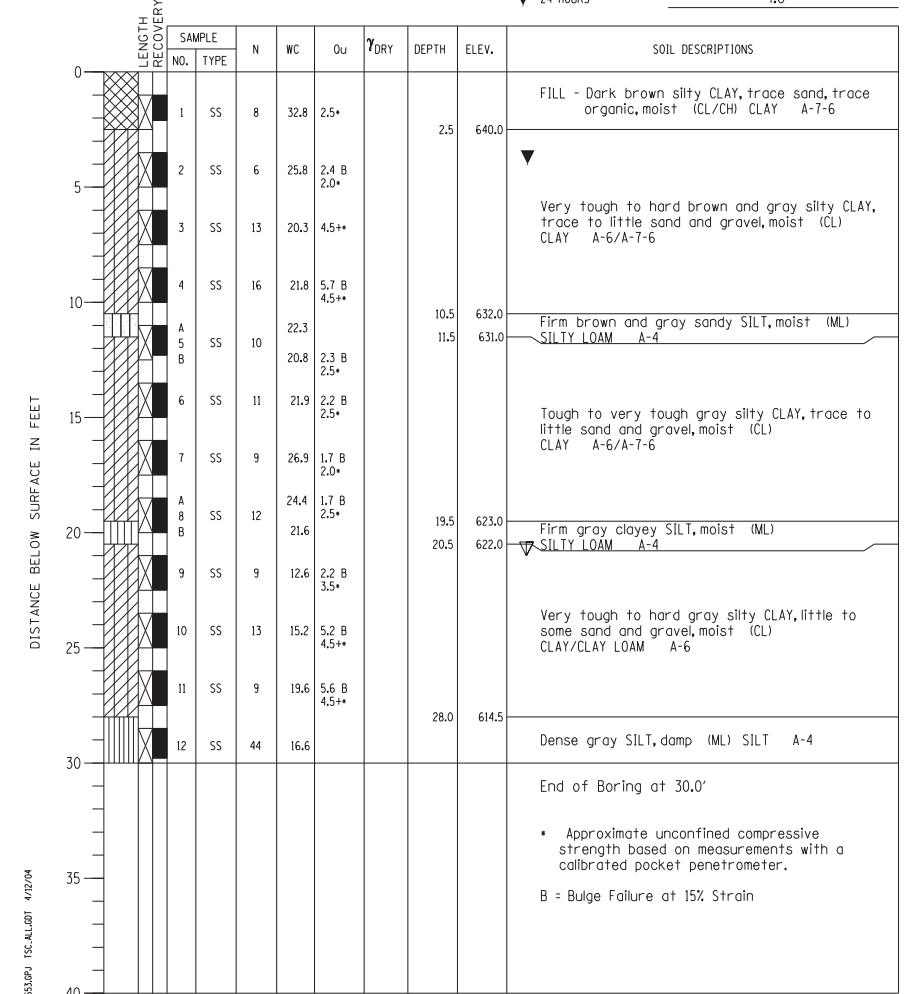


BORING NO. 6
 Station 16+66.58
 Offset 31.89' LT

PROJECT Balmoral Avenue Extension - Phase II, Rosemont, Illinois
 CLIENT Christopher B. Burke Engineering, Ltd., Rosemont, Illinois
 BORING 8 DATE STARTED 7-19-02 DATE COMPLETED 7-19-02 JOB L-52,653



ELEVATIONS WATER LEVEL OBSERVATIONS
 GROUND SURFACE 642.5 WHILE DRILLING 21.0'
 END OF BORING 612.5 AT END OF BORING Dry
 24 HOURS



BORING NO. 8
 Station 17+37.76
 Offset 32.35' LT

N:\ROSEMONT\11000\CADD_Sheets\DI60637-shr-ewell-013-cb.dgn