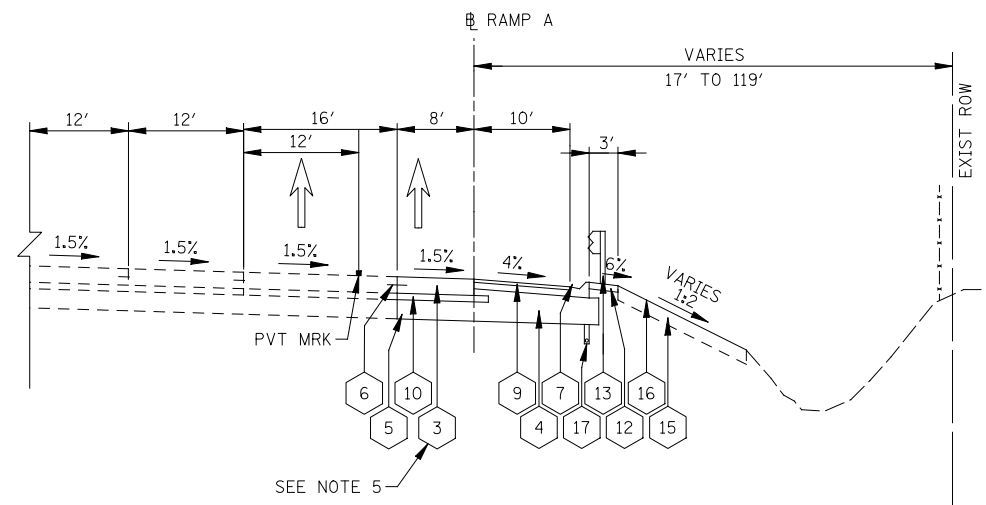
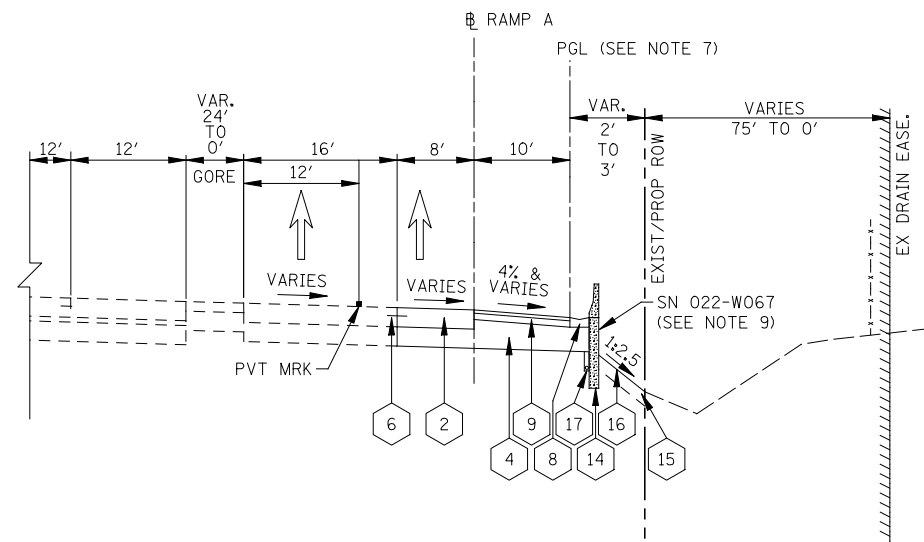


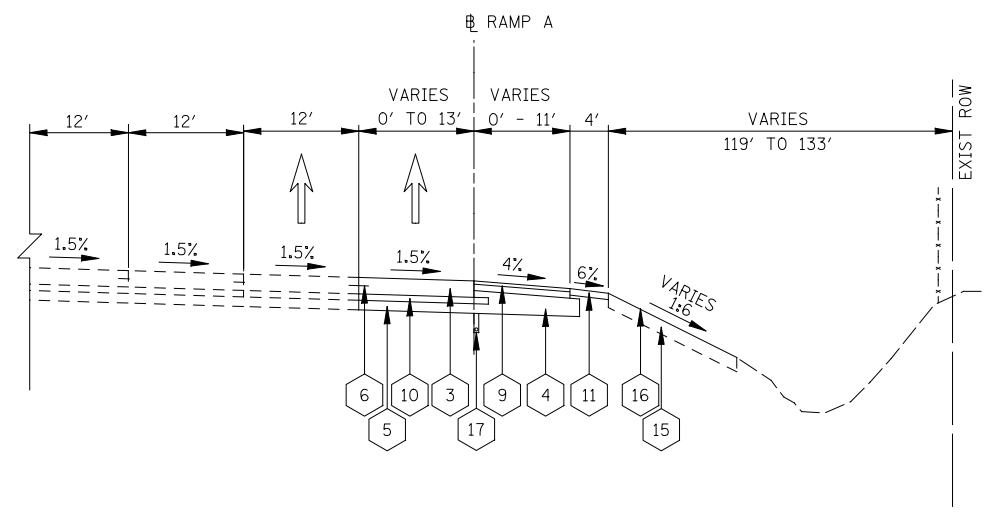
PROPOSED TYPICAL SECTION
STA 1009+36.8 TO STA 1012+55.0



PROPOSED TYPICAL SECTION
STA 1013+56.6 TO STA 1026+94.0



PROPOSED TYPICAL SECTION
STA 1012+55.0 TO STA 1013+56.6



PROPOSED TYPICAL SECTION
STA 1026+94.0 TO STA 1041+55.0

ILLINOIS TOLLWAY LEGEND PROPOSED

- 1 PORTLAND CEMENT CONCRETE PAVEMENT 10" (JOINTED)
- 2 PORTLAND CEMENT CONCRETE PAVEMENT 12" (JOINTED) (SEE NOTE 6)
- 3 CONTINUOUSLY REINFORCED P.C.C. PAVEMENT 12" (SEE NOTE 6)
- 4 SUBGRADE AGGREGATE, 12"
- 5 SUBGRADE AGGREGATE SPECIAL, 6"
- 6 DRILLED AND GROUTED IN PLACE, TIE BARS 3/4" X 24" AT 24" CTS. (INCLUDED IN COST OF PAVEMENT)
- 7 GUTTER, TYPE G-2
- 8 GUTTER, TYPE G-2 MODIFIED
- 9 HOT-MIX ASPHALT SHOULDERS, 6"
- 10 STABILIZED SUBBASE HOT-MIX ASPHALT, 4"
- 11 AGGREGATE SHOULDERS, TYPE B
- 12 AGGREGATE SHOULDERS SPECIAL, TYPE C
- 13 GALVANIZED STEEL PLATE BEAM GUARDRAIL, 6' POSTS
- 14 SOLDIER PILE RETAINING WALL WITH 42" CONCRETE BARRIER
- 15 TOPSOIL EXCAVATION AND PLACEMENT, 8"
- 16 SEEDING
- 17 PIPE UNDERDRAINS, FABRIC LINED TRENCH 6"
- 18 SLOPE WALL (SEE BRIDGE DRAWINGS)
- 19 PORTLAND CEMENT CONCRETE SHOULDER 8"
- 20 RIGHT OF WAY FENCE, 6'

NOTES

1. SEE CROSS SECTIONS FOR GRADING INFORMATION.
2. SEE LANDSCAPING PLANS FOR SEEDING AND SODDING INFORMATION.
3. SEE PLANS FOR PLACEMENT OF GUARDRAIL
4. SEE UNDERDRAIN PLANS FOR PLACEMENT OF UNDERDRAINS
5. FOLLOW PREVIOUS CROSS SECTION TO STA. 1019+57 AND THEN BEGIN CONTINUOUSLY REINFORCED PCC
6. MATCH CROSS-SLOPE OF ADJACENT RAMP PAVEMENT TO REMAIN
7. ALONG THE RAMP PAVEMENT WIDENING SECTION FROM STA 1009+36.8 TO STA 1022+51 THE PGL FOLLOWS THE PROPOSED OUTSIDE EDGE OF SHOULDER.
8. GUARDRAIL BEGINS AT STATION 1010+59.7.
9. SEE STRUCTURAL PLANS FOR MORE DETAILS ON THE RETAINING WALL.

FILE NAME = *FILEL*	USER NAME = *USER*	DESIGNED <i>PJO</i>	REVISED -	STATE OF ILLINOIS DEPARTMENT OF TRANSPORTATION	TYPICAL SECTIONS I-88 RAMP A	F.A.P. RTE.	SECTION	COUNTY	TOTAL SHEETS	SHEET NO.	
		DRAWN <i>KES</i>	REVISED -			338	(112 & 113) WRS-5	DUPAGE	963	59	
		CHECKED <i>JCM</i>	REVISED -			CONTRACT NO. 60I31					
		DATE <i>10/15/2012</i>	REVISED -			SCALE:	SHEET NO. 13 OF 17 SHEETS	STA.	TO STA.	ILLINOIS FED. AID PROJECT	