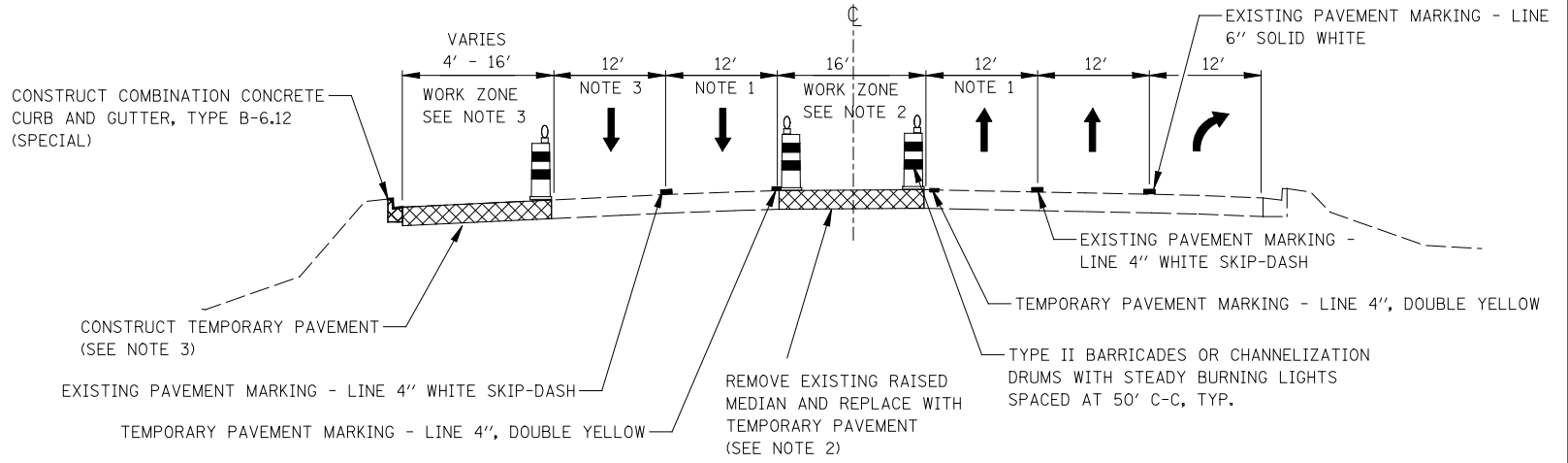


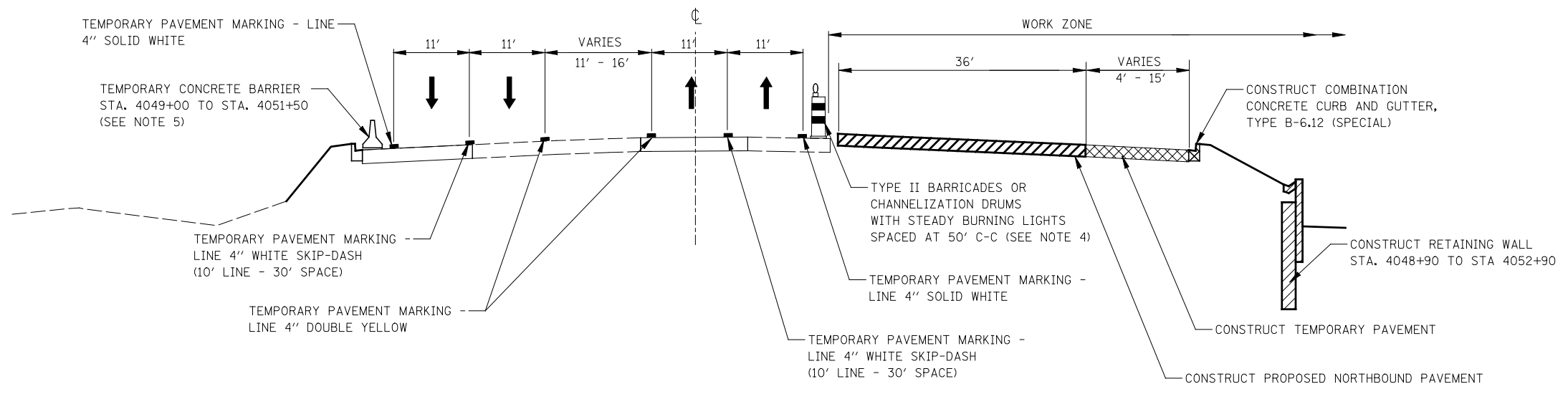
**EXISTING CONDITIONS**

IL ROUTE 59  
STA. 4045+00 TO STA. 4054+00



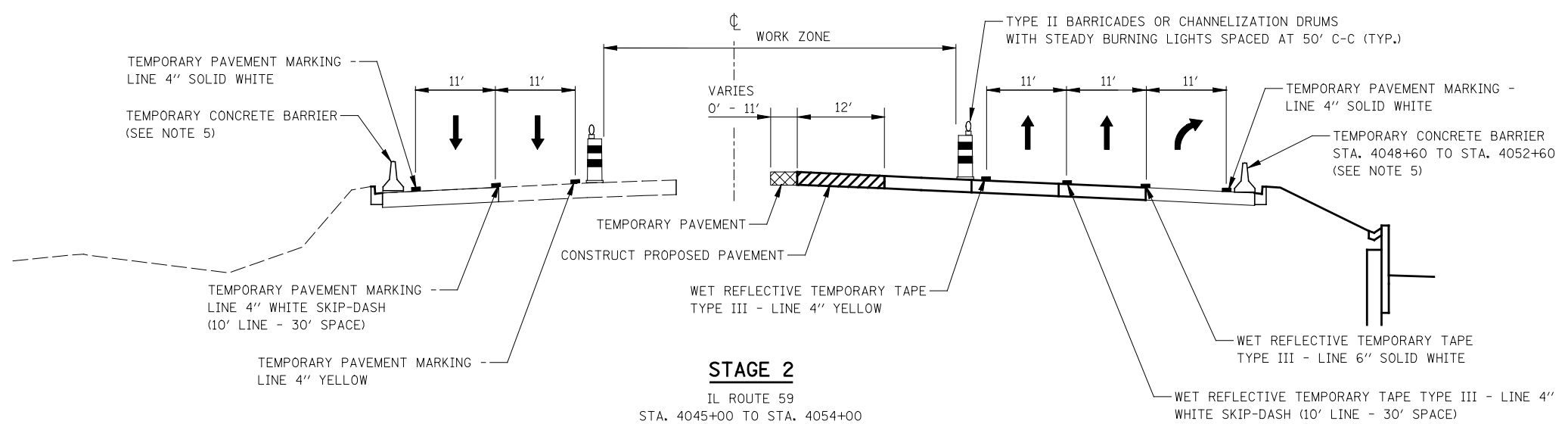
**PRESTAGE**

IL ROUTE 59  
STA. 4045+00 TO STA. 4054+00



**STAGE 1, 1A, AND 1B**

IL ROUTE 59  
STA. 4045+00 TO STA. 4054+00



**STAGE 2**

IL ROUTE 59  
STA. 4045+00 TO STA. 4054+00

**NOTES**

1. THE LEFT THROUGH LANE IS TO BE CLOSED IN ACCORDANCE WITH IDOT STANDARD 701601 DURING CONSTRUCTION WITHIN THE EXISTING MEDIAN. CHANNELIZATION DRUMS SHALL BE RELOCATED ALONG THE ADJACENT THROUGH LANE OPEN TO TRAFFIC. THIS WORK MUST BE DONE DURING OFF-PEAK PERIODS AS DETERMINED BY THE ENGINEER.
2. MEDIAN REMOVAL AND REPLACEMENT WORK WILL BE A SHORT-TERM MOVING WORK ZONE OPERATION. THE CONTRACTOR IS REQUIRED TO PLACE TEMPORARY PAVEMENT IN ALL LOCATIONS WHERE THE RAISED MEDIAN IS REMOVED BY THE END OF THE WORK DAY.
3. THE RIGHT THROUGH LANE IS TO BE CLOSED IN ACCORDANCE WITH IDOT STANDARD 701601 DURING TEMPORARY PAVEMENT CONSTRUCTION ADJACENT TO EXISTING PAVEMENT. CHANNELIZATION DRUMS SHALL BE RELOCATED ALONG THE ADJACENT THROUGH LANE OPEN TO TRAFFIC. THIS WORK MUST BE DONE DURING OFF-PEAK PERIODS AS DETERMINED BY THE ENGINEER.
4. PAVEMENT DROP-OFF SHALL NOT EXCEED 24 INCHES BEHIND TYPE II BARRICADES OR CHANNELIZATION DRUMS. TEMPORARY GRADING, IF REQUIRED TO REDUCE DROP-OFF HEIGHT, DURING CONSTRUCTION SHALL BE CONSIDERED INCLUDED IN THE COST FOR TRAFFIC CONTROL AND PROTECTION, (SPECIAL).
5. TEMPORARY CONCRETE BARRIER SHALL BE CONTINUOUSLY PINNED TO THE PAVEMENT. SEE MAINTENANCE OF TRAFFIC GENERAL NOTES.

FILE NAME =	USER NAME = #USER#	DESIGNED <i>PJO</i>	REVISED -	<b>STATE OF ILLINOIS DEPARTMENT OF TRANSPORTATION</b>	<b>MAINTENANCE OF TRAFFIC TYPICAL SECTIONS ILLINOIS ROUTE 59</b>	F.A.P. RTE.	SECTION	COUNTY	TOTAL SHEETS	SHEET NO.	
#FILE#		DRAWN <i>KES</i>	REVISED -			338	(112 & 113) WRS-5	DUPAGE	963	99	
PLOT SCALE = #SCALE#		CHECKED <i>JCM</i>	REVISED -			CONTRACT NO. 60131					
PLOT DATE = #DATE#		DATE <i>10/15/2012</i>	REVISED -			SCALE:	SHEET NO. 1 OF 17 SHEETS	STA. 4045+00 TO STA. 4054+00	ILLINOIS FED. AID PROJECT		