

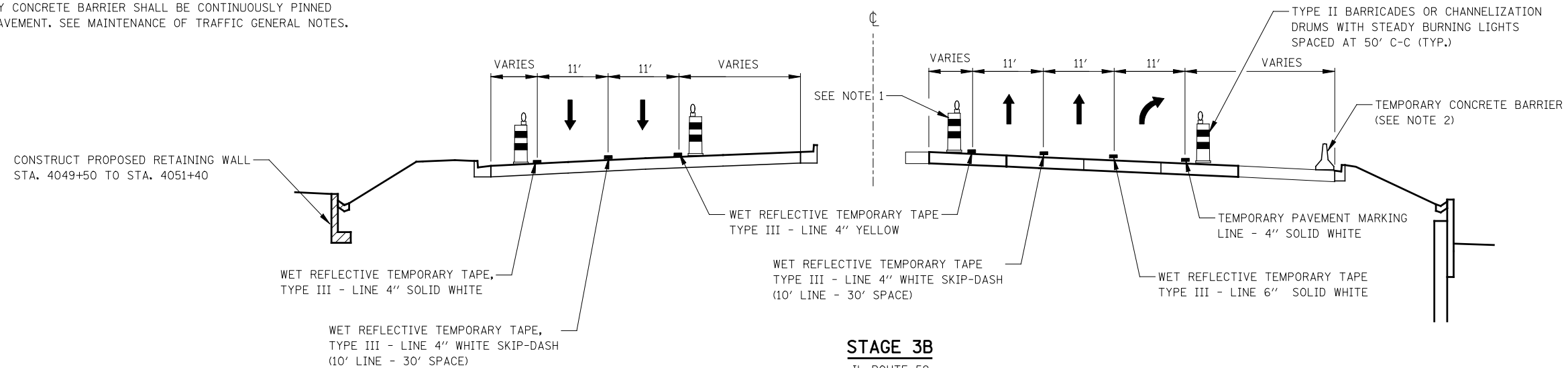
STAGE 3 & STAGE 3A

IL ROUTE 59
STA. 4045+00 TO STA. 4054+00

NOTES

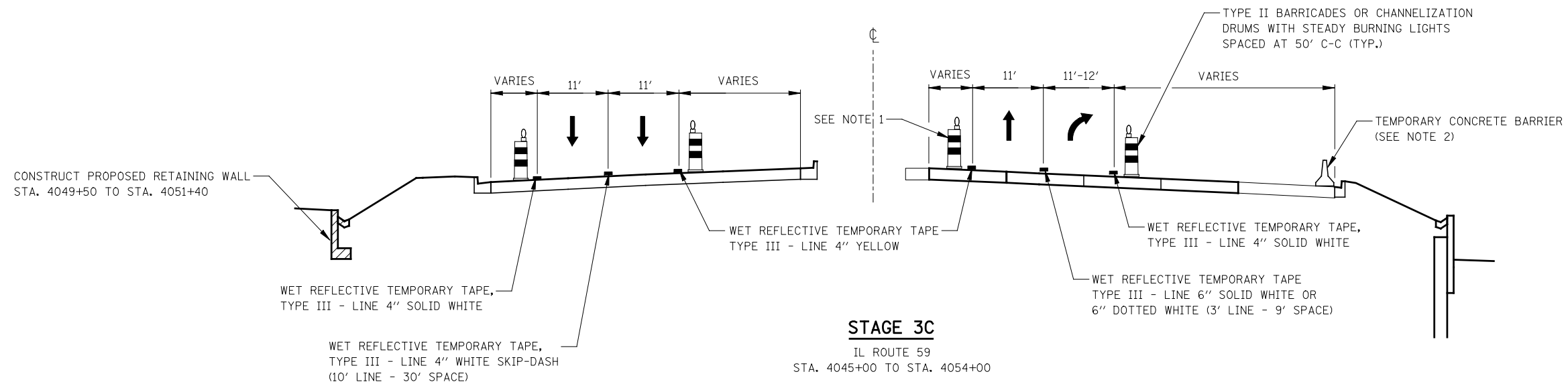
1. PAVEMENT DROP-OFF SHALL NOT EXCEED 24 INCHES BEHIND TYPE II BARRICADES OR CHANNELIZATION DRUMS. TEMPORARY GRADING, IF REQUIRED TO REDUCE DROP-OFF HEIGHT, DURING CONSTRUCTION SHALL BE CONSIDERED INCLUDED IN THE COST FOR TRAFFIC CONTROL AND PROTECTION, (SPECIAL).

2. TEMPORARY CONCRETE BARRIER SHALL BE CONTINUOUSLY PINNED TO THE PAVEMENT. SEE MAINTENANCE OF TRAFFIC GENERAL NOTES.



STAGE 3B

IL ROUTE 59
STA. 4045+00 TO STA. 4054+00



STAGE 3C

IL ROUTE 59
STA. 4045+00 TO STA. 4054+00

FILE NAME =	USER NAME = #USER#	DESIGNED <i>PJO</i>	REVISED -
#FILEL#		DRAWN <i>KES</i>	REVISED -
		CHECKED <i>JCM</i>	REVISED -
		DATE <i>10/15/2012</i>	REVISED -

**STATE OF ILLINOIS
DEPARTMENT OF TRANSPORTATION**

**MAINTENANCE OF TRAFFIC TYPICAL SECTIONS
ILLINOIS ROUTE 59**

SCALE: SHEET NO. 2 OF 17 SHEETS STA. 4045+00 TO STA. 4054+00

F.A.P. RTE.	SECTION	COUNTY	TOTAL SHEETS	SHEET NO.
338	(112 & 113) WRS-5	DUPAGE	963	100
CONTRACT NO. 60I31				
ILLINOIS FED. AID PROJECT				