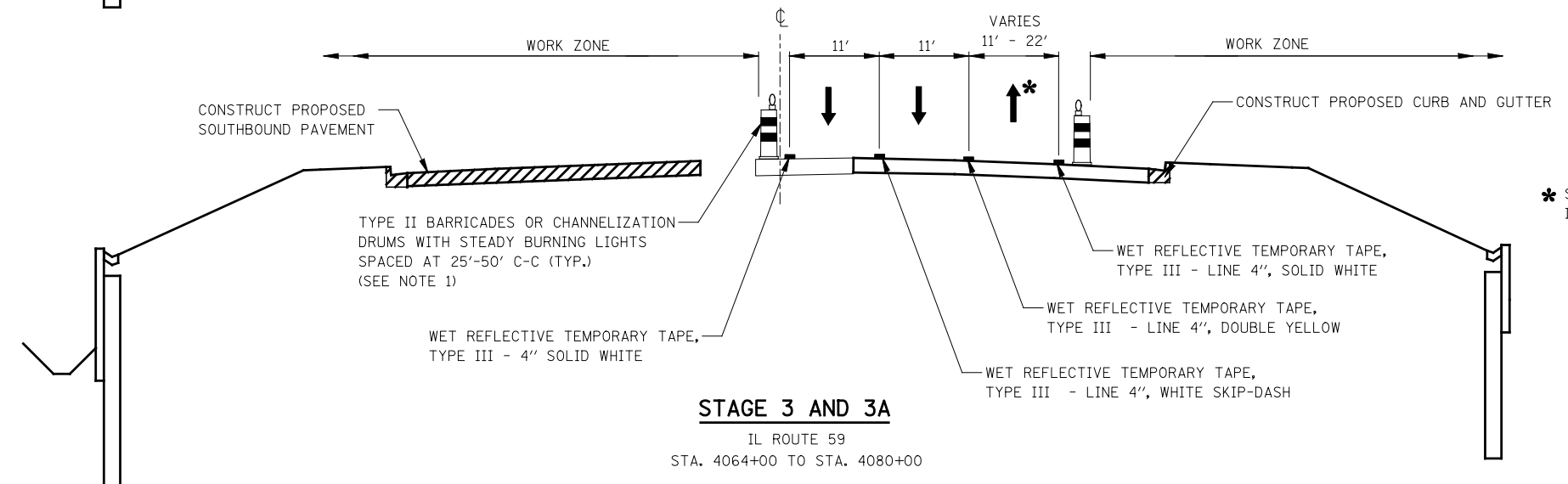


STAGE 2

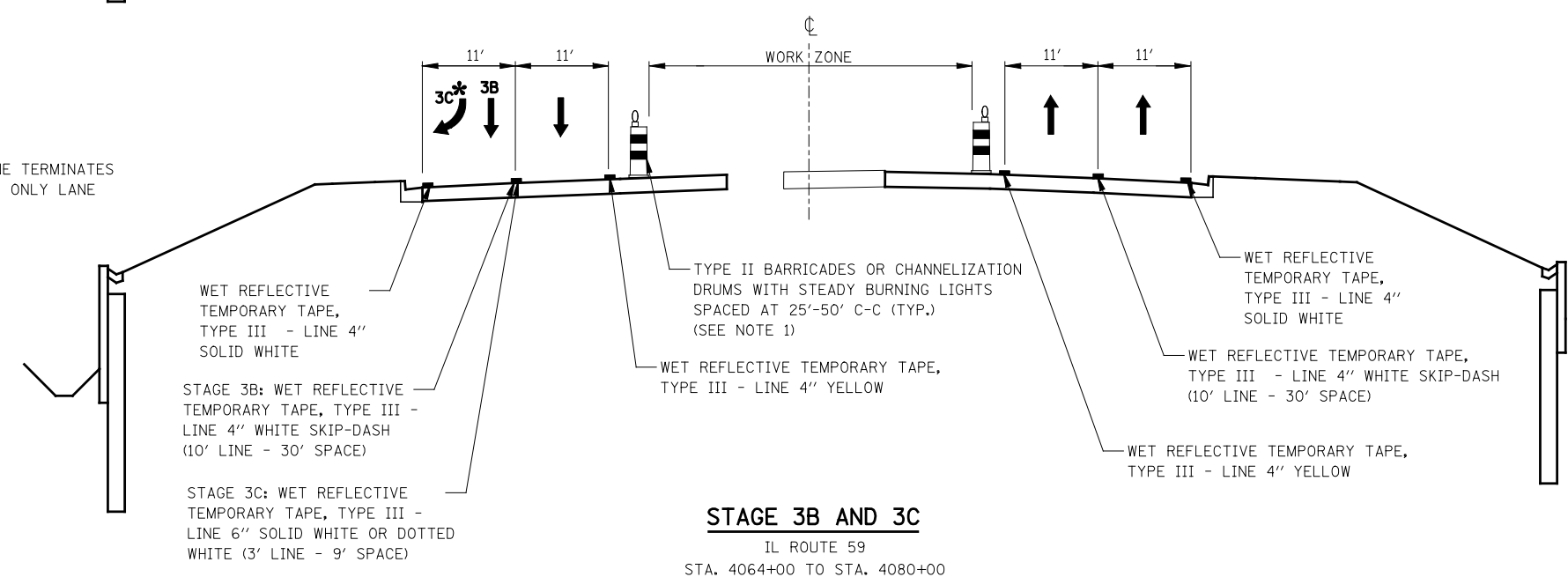
IL ROUTE 59
STA. 4064+00 TO STA. 4080+00



STAGE 3 AND 3A

IL ROUTE 59
STA. 4064+00 TO STA. 4080+00

* RIGHT THROUGH LANE TERMINATES INTO A RIGHT TURN ONLY LANE IN STAGE 3C



STAGE 3B AND 3C

IL ROUTE 59
STA. 4064+00 TO STA. 4080+00

NOTES

1. PAVEMENT DROP-OFF SHALL NOT EXCEED 24 INCHES BEHIND TYPE II BARRICADES OR CHANNELIZATION DRUMS. TEMPORARY GRADING, IF REQUIRED TO REDUCE DROP-OFF HEIGHT, DURING CONSTRUCTION SHALL BE CONSIDERED INCLUDED IN THE COST FOR TRAFFIC CONTROL AND PROTECTION, (SPECIAL).
2. TEMPORARY CONCRETE BARRIER SHALL BE CONTINUOUSLY PINNED TO THE PAVEMENT. SEE MAINTENANCE OF TRAFFIC GENERAL NOTES.

FILE NAME = *FILEL*	USER NAME = *USER*	DESIGNED <i>PJO</i>	REVISED -	STATE OF ILLINOIS DEPARTMENT OF TRANSPORTATION	MAINTENANCE OF TRAFFIC TYPICAL SECTIONS ILLINOIS ROUTE 59	F.A.P. RTE.	SECTION	COUNTY	TOTAL SHEETS	SHEET NO.	
	DRAWN <i>KES</i>	CHECKED <i>JCM</i>	REVISED -			338	(112 & 113) WRS-5	DUPAGE	963	107	
	PLOT SCALE = *SCALE*	DATE <i>10/15/2012</i>	REVISED -			CONTRACT NO. 60I31					
	PLOT DATE = *DATE*		REVISED -			ILLINOIS FED. AID PROJECT					
				SCALE:		SHEET NO. 9 OF 17 SHEETS		STA. 4064+00 TO STA. 4080+00			