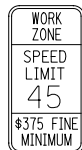


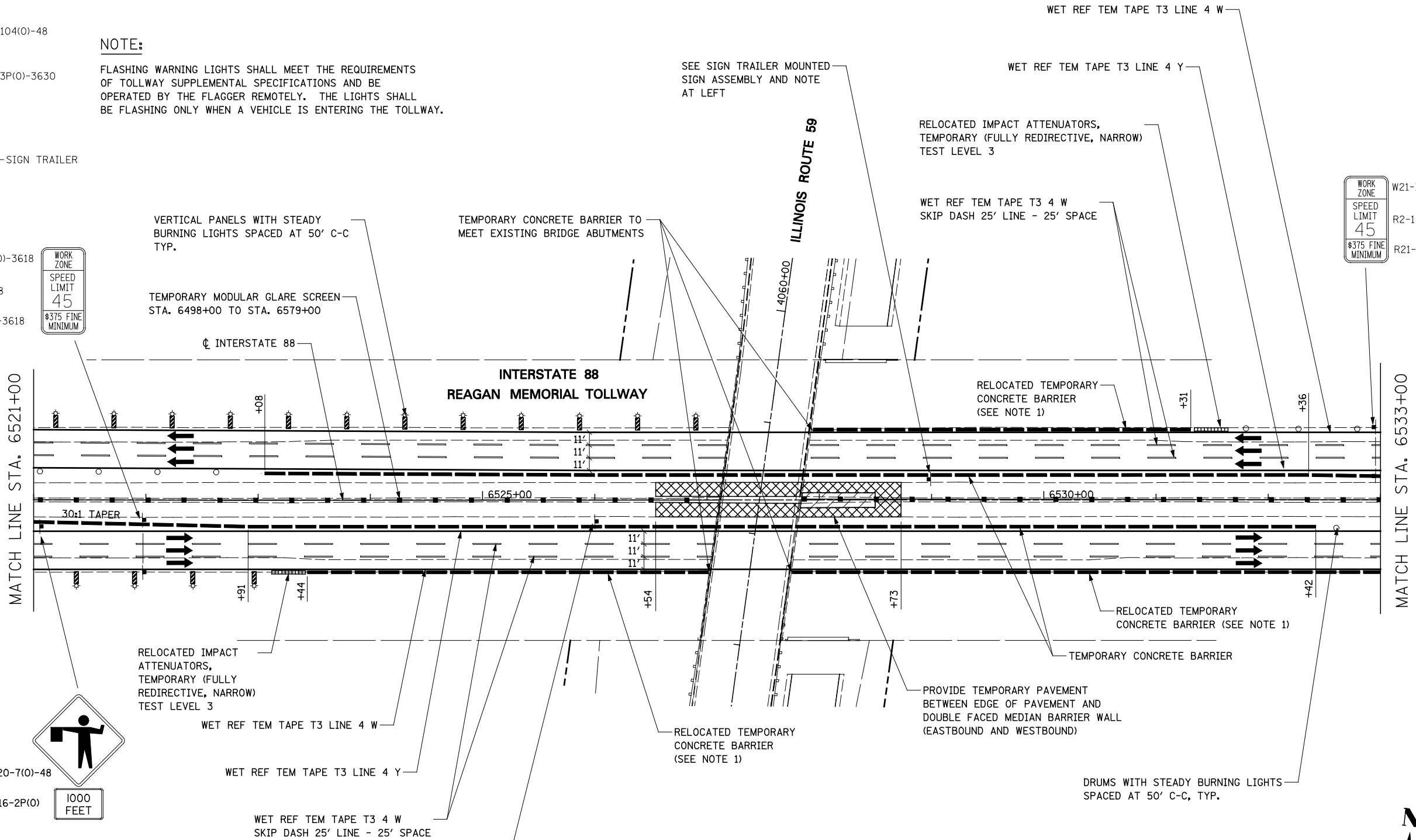
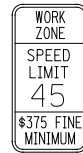
NOTE:

FLASHING WARNING LIGHTS SHALL MEET THE REQUIREMENTS OF TOLLWAY SUPPLEMENTAL SPECIFICATIONS AND BE OPERATED BY THE FLAGGER REMOTELY. THE LIGHTS SHALL BE FLASHING ONLY WHEN A VEHICLE IS ENTERING THE TOLLWAY.

W21-I115(O)-3618
R2-1-3648
R21-I106-3618



W21-I115(O)-3618
R2-1-3648
R21-I106-3618



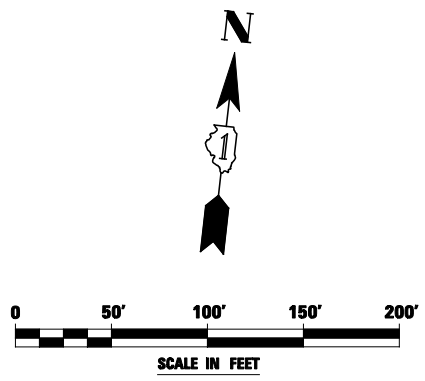
NOTES

1. THIS TEMPORARY CONCRETE BARRIER IS TO BE RELOCATED FROM RAMP B AND D FOR WHERE IT IS NO LONGER REQUIRED. THIS WORK SHALL BE PAID FOR AT THE CONTRACT UNIT PRICE FOR RELOCATE TEMPORARY CONCRETE BARRIER AND SHALL BE MEASURED IN ACCORDANCE WITH ARTICLE 704.05 OF THE STANDARD SPECIFICATIONS.

TOLLWAY TRAFFIC CONTROL

TRAFFIC CONTROL ON INTERSTATE 88 AND AT RAMP TERMINALS SHALL BE IN ACCORDANCE WITH THE FOLLOWING ILLINOIS TOLLWAY STANDARDS:

- E1 CONSTRUCTION SIGNS
- E2 LANE CLOSURE DETAILS
- E3 SHOULDER CLOSURE DETAILS
- E4 MAINTENANCE OF TRAFFIC REVERSE CURVE
- E5 TEMPORARY GORE DETAILS



| | | | |
|-------------|----------------------|------------------------|-----------|
| FILE NAME = | USER NAME = #USER# | DESIGNED <i>PJO</i> | REVISED - |
| #FILEL# | | DRAWN <i>KES</i> | REVISED - |
| | PLOT SCALE = #SCALE# | CHECKED <i>JCM</i> | REVISED - |
| | PLOT DATE = #DATE# | DATE <i>10/15/2012</i> | REVISED - |

**STATE OF ILLINOIS
DEPARTMENT OF TRANSPORTATION**

**MAINTENANCE OF TRAFFIC – STAGE 1A
INTERSTATE 88**

SCALE: SHEET NO. 29 OF 118 SHEETS STA. 6521+00 TO STA. 6533+00

| F.A.P. RTE. | SECTION | COUNTY | TOTAL SHEETS | SHEET NO. |
|---------------------------|-------------------|--------|--------------|-----------|
| 338 | (112 & 113) WRS-5 | DUPAGE | 963 | 145 |
| CONTRACT NO. 60I31 | | | | |
| ILLINOIS FED. AID PROJECT | | | | |