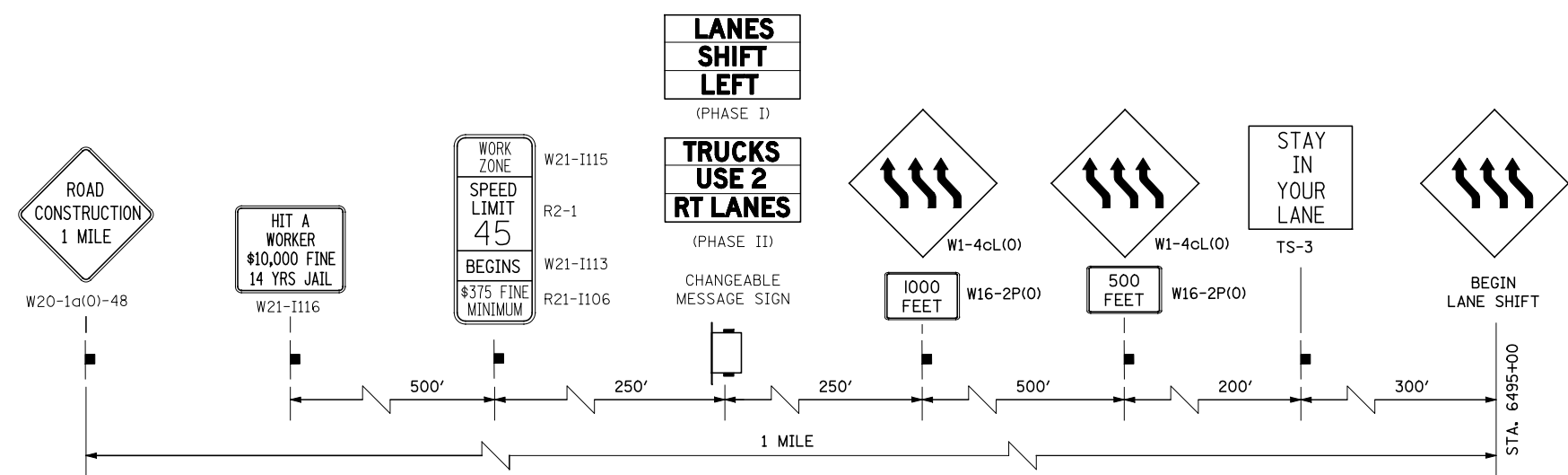


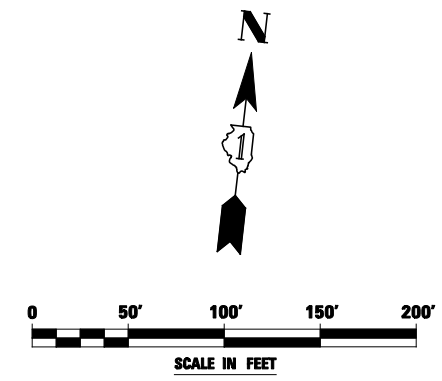
TOLLWAY TRAFFIC CONTROL

TRAFFIC CONTROL ON INTERSTATE 88 AND AT RAMP TERMINALS SHALL BE IN ACCORDANCE WITH THE FOLLOWING ILLINOIS TOLLWAY STANDARDS:

- E1 CONSTRUCTION SIGNS
- E2 LANE CLOSURE DETAILS
- E3 SHOULDER CLOSURE DETAILS
- E4 MAINTENANCE OF TRAFFIC REVERSE CURVE
- E5 TEMPORARY GORE DETAILS



ADVANCE WARNING SIGN SEQUENCE DETAIL
EASTBOUND



FILE NAME = #FILEL#	USER NAME = #USER#	DESIGNED <i>PJO</i>	REVISED -	STATE OF ILLINOIS DEPARTMENT OF TRANSPORTATION	MAINTENANCE OF TRAFFIC – STAGE 2 INTERSTATE 88	F.A.P. RTE.	SECTION	COUNTY	TOTAL SHEETS	SHEET NO.	
		DRAWN <i>KES</i>	REVISED -			338	(112 & 113) WRS-5	DUPAGE	963	161	
		CHECKED <i>JCM</i>	REVISED -			CONTRACT NO. 60I31					
		DATE <i>10/15/2012</i>	REVISED -			ILLINOIS FED. AID PROJECT					
						SCALE:	SHEET NO. 45 OF 118 SHEETS		STA. 6488+50 TO STA. 6496+00		