

**MOT PAVEMENT MARKING LEGEND**

- (A) TEMPORARY PAVEMENT MARKING - LINE 4", SOLID WHITE
- (B) TEMPORARY PAVEMENT MARKING - LINE 4", WHITE SKIP-DASH (10' LINE - 30' SPACE)
- (C) TEMPORARY PAVEMENT MARKING - LINE 4", SOLID YELLOW
- (D) TEMPORARY PAVEMENT MARKING - LINE 4", DOUBLE YELLOW SPACED AT 11" C-C WITH TEMPORARY RAISED REFLECTIVE PAVEMENT MARKERS SPACED 40' C-C (BI-DIRECTIONAL AMBER)
- (E) TEMPORARY PAVEMENT MARKING - LINE 6", SOLID WHITE
- (F) TEMPORARY PAVEMENT MARKING - LINE 6", WHITE DOTTED (2' LINE - 6' SPACE) (UNLESS OTHERWISE NOTED)
- (G) TEMPORARY PAVEMENT MARKING - LINE 8", SOLID WHITE
- (H) TEMPORARY PAVEMENT MARKING - LINE 12", SOLID WHITE

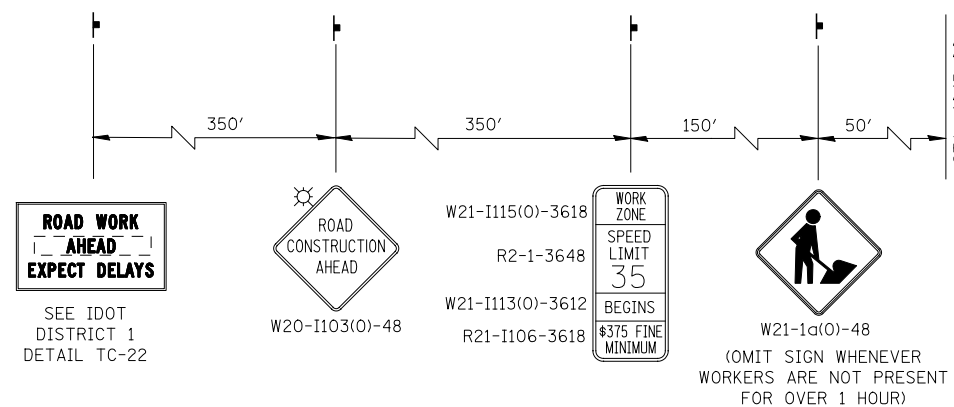
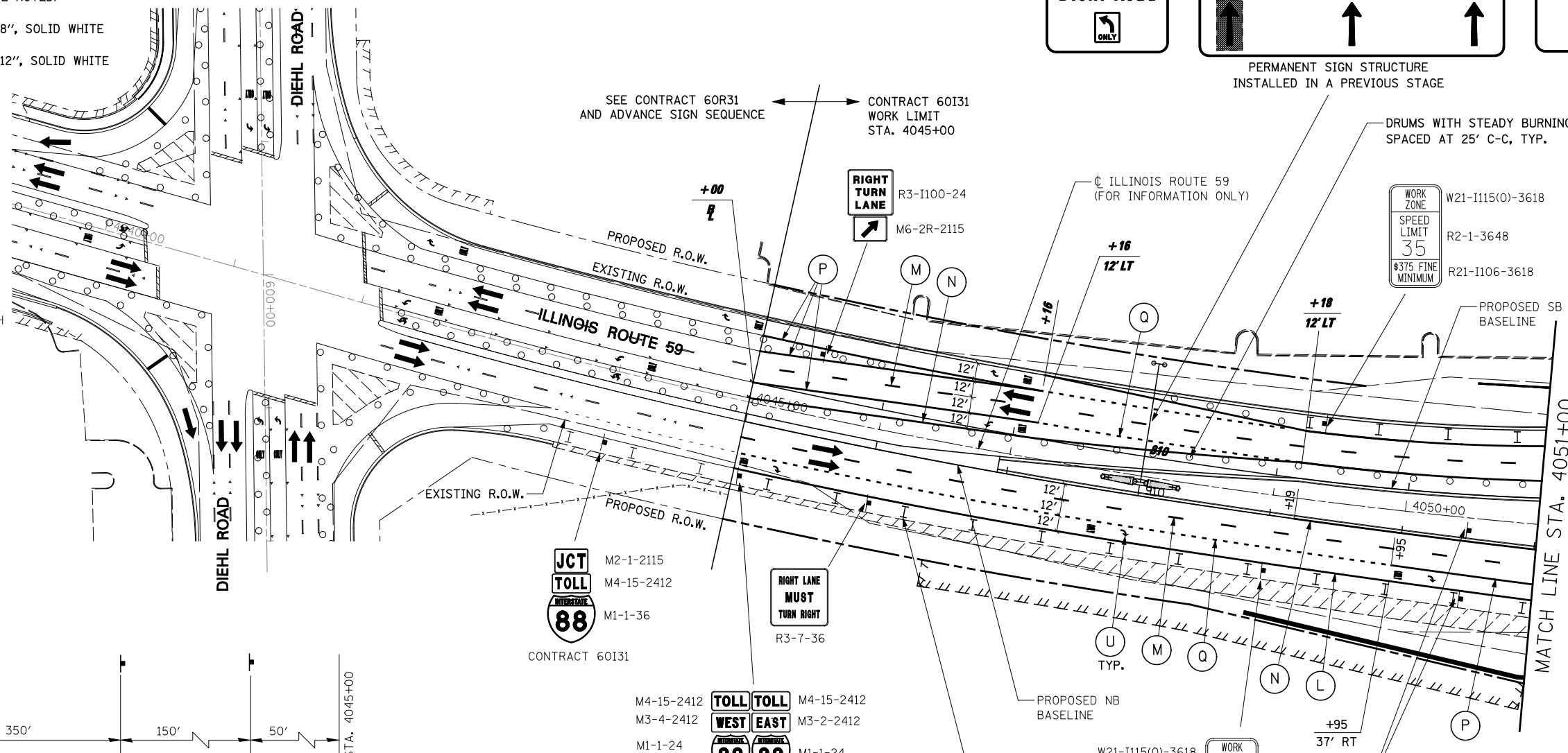
- (I) TEMPORARY PAVEMENT MARKING - LINE 12", SOLID YELLOW
- (J) TEMPORARY PAVEMENT MARKING - LINE 24", SOLID WHITE
- (K) TEMPORARY PAVEMENT MARKING, LETTERS & SYMBOLS
- (L) WET REFLECTIVE TEMPORARY TAPE, TYPE III, 4", SOLID WHITE
- (M) WET REFLECTIVE TEMPORARY TAPE, TYPE III, 4", WHITE SKIP-DASH (10' LINE - 30' SPACE)
- (N) WET REFLECTIVE TEMPORARY TAPE, TYPE III, 4", SOLID YELLOW
- (O) WET REFLECTIVE TEMPORARY TAPE, TYPE III, 4", DOUBLE YELLOW SPACED AT 11" C-C WITH TEMPORARY RAISED REFLECTIVE PAVEMENT MARKERS SPACED 40' C-C (BI-DIRECTIONAL AMBER)

- (P) WET REFLECTIVE TEMPORARY TAPE, TYPE III, 6", SOLID WHITE
- (Q) WET REFLECTIVE TEMPORARY TAPE, TYPE III, 6", WHITE DOTTED (2' LINE - 6' SPACE) (UNLESS OTHERWISE NOTED)
- (R) WET REFLECTIVE TEMPORARY TAPE, TYPE III, 8", SOLID WHITE
- (S) WET REFLECTIVE TEMPORARY TAPE, TYPE III, 12", SOLID YELLOW
- (T) WET REFLECTIVE TEMPORARY TAPE, TYPE III, 24", SOLID WHITE
- (U) WET REFLECTIVE TEMPORARY TAPE, TYPE III, LETTERS & SYMBOLS

**ALIGNMENT LEGEND**  
 +39.5 INDICATES STATION MEASURED FROM SB BASELINE  
 +39.5 INDICATES STATION MEASURED FROM NB BASELINE

**LEGEND**

- CONSTRUCTION WORK ZONE
- TEMPORARY PAVEMENT PLACED IN THIS STAGE
- DIRECTION OF TRAFFIC
- TYPE II BARRICADE OR DRUM WITH STEADY BURNING LIGHT
- CHANNELIZATION DRUM WITH STEADY BURNING LIGHT
- TEMPORARY CONCRETE BARRIER
- VERTICAL PANEL WITH STEADY BURNING LIGHT
- SIGN
- TYPE III BARRICADE LOCATION
- FLASHING YELLOW LIGHT



**ADVANCE SIGNING FOR NORTHBOUND IL ROUTE 59**  
 (SPACING MAY VARY DUE TO FIELD CONDITIONS)  
 COORDINATE WITH CONTRACT 60R31, SEE NOTE 1

**NOTES**

- ADVANCE SIGN LOCATIONS SHALL BE COORDINATED WITH ADJACENT CONTRACT. "ROAD CONSTRUCTION AHEAD" SIGN SHALL BE PLACED WHEN WARRANTED BY WORK ZONE CONDITIONS OR AS DIRECTED BY THE ENGINEER.
- ALL BLANK OUT PANELS AND TEMPORARY SIGN PANELS MOUNTED ON OVERHEAD SIGNS SHALL HAVE AN ORANGE BACKGROUND.



|                        |                    |                        |           |   |  |                             |                   |                              |              |           |  |
|------------------------|--------------------|------------------------|-----------|---|--|-----------------------------|-------------------|------------------------------|--------------|-----------|--|
| FILE NAME =<br>#FILEL# | USER NAME = #USER# | DESIGNED <i>PJO</i>    | REVISED - | <b>STATE OF ILLINOIS<br/>DEPARTMENT OF TRANSPORTATION</b> | <b>MAINTENANCE OF TRAFFIC - STAGE 4A<br/>ILLINOIS ROUTE 59</b> | F.A.P. RTE.                 | SECTION           | COUNTY                       | TOTAL SHEETS | SHEET NO. |  |
|                        |                    | DRAWN <i>KES</i>       | REVISED - |   |  | 338                         | (112 & 113) WRS-5 | DUPAGE                       | 963          | 226       |  |
|                        |                    | CHECKED <i>JCM</i>     | REVISED - |   |  | CONTRACT NO. 60I31          |                   |                              |              |           |  |
|                        |                    | DATE <i>10/15/2012</i> | REVISED - |   |  | ILLINOIS FED. AID PROJECT   |                   |                              |              |           |  |
|                        |                    |                        |           |   | SCALE:   | SHEET NO. 110 OF 118 SHEETS |                   | STA. 4038+00 TO STA. 4051+00 |              |           |  |