

MOT PAVEMENT MARKING LEGEND

- (A) TEMPORARY PAVEMENT MARKING - LINE 4", SOLID WHITE
- (B) TEMPORARY PAVEMENT MARKING - LINE 4", WHITE SKIP-DASH (10' LINE - 30' SPACE)
- (C) TEMPORARY PAVEMENT MARKING - LINE 4", SOLID YELLOW
- (D) TEMPORARY PAVEMENT MARKING - LINE 4", DOUBLE YELLOW SPACED AT 11" C-C WITH TEMPORARY RAISED REFLECTIVE PAVEMENT MARKERS SPACED 40' C-C (BI-DIRECTIONAL AMBER)
- (E) TEMPORARY PAVEMENT MARKING - LINE 6", SOLID WHITE
- (F) TEMPORARY PAVEMENT MARKING - LINE 6", WHITE DOTTED (2' LINE - 6' SPACE) (UNLESS OTHERWISE NOTED)
- (G) TEMPORARY PAVEMENT MARKING - LINE 8", SOLID WHITE
- (H) TEMPORARY PAVEMENT MARKING - LINE 12", SOLID WHITE
- (I) TEMPORARY PAVEMENT MARKING - LINE 12", SOLID YELLOW
- (J) TEMPORARY PAVEMENT MARKING - LINE 24", SOLID WHITE
- (K) TEMPORARY PAVEMENT MARKING, LETTERS & SYMBOLS
- (L) WET REFLECTIVE TEMPORARY TAPE, TYPE III, 4", SOLID WHITE
- (M) WET REFLECTIVE TEMPORARY TAPE, TYPE III, 4", WHITE SKIP-DASH (10' LINE - 30' SPACE)
- (N) WET REFLECTIVE TEMPORARY TAPE, TYPE III, 4", SOLID YELLOW
- (O) WET REFLECTIVE TEMPORARY TAPE, TYPE III, 4", DOUBLE YELLOW SPACED AT 11" C-C WITH TEMPORARY RAISED REFLECTIVE PAVEMENT MARKERS SPACED 40' C-C (BI-DIRECTIONAL AMBER)

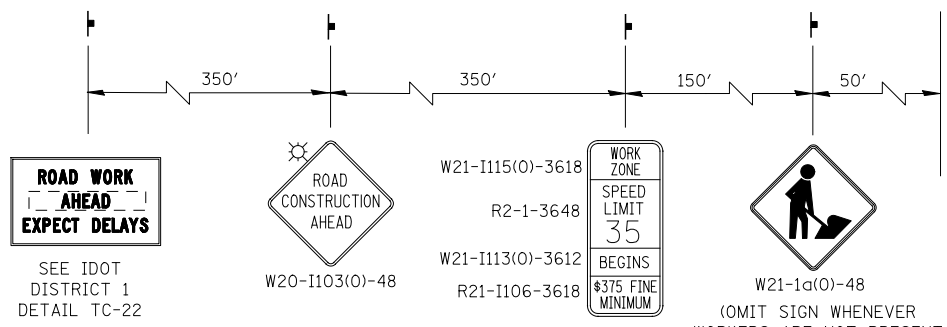
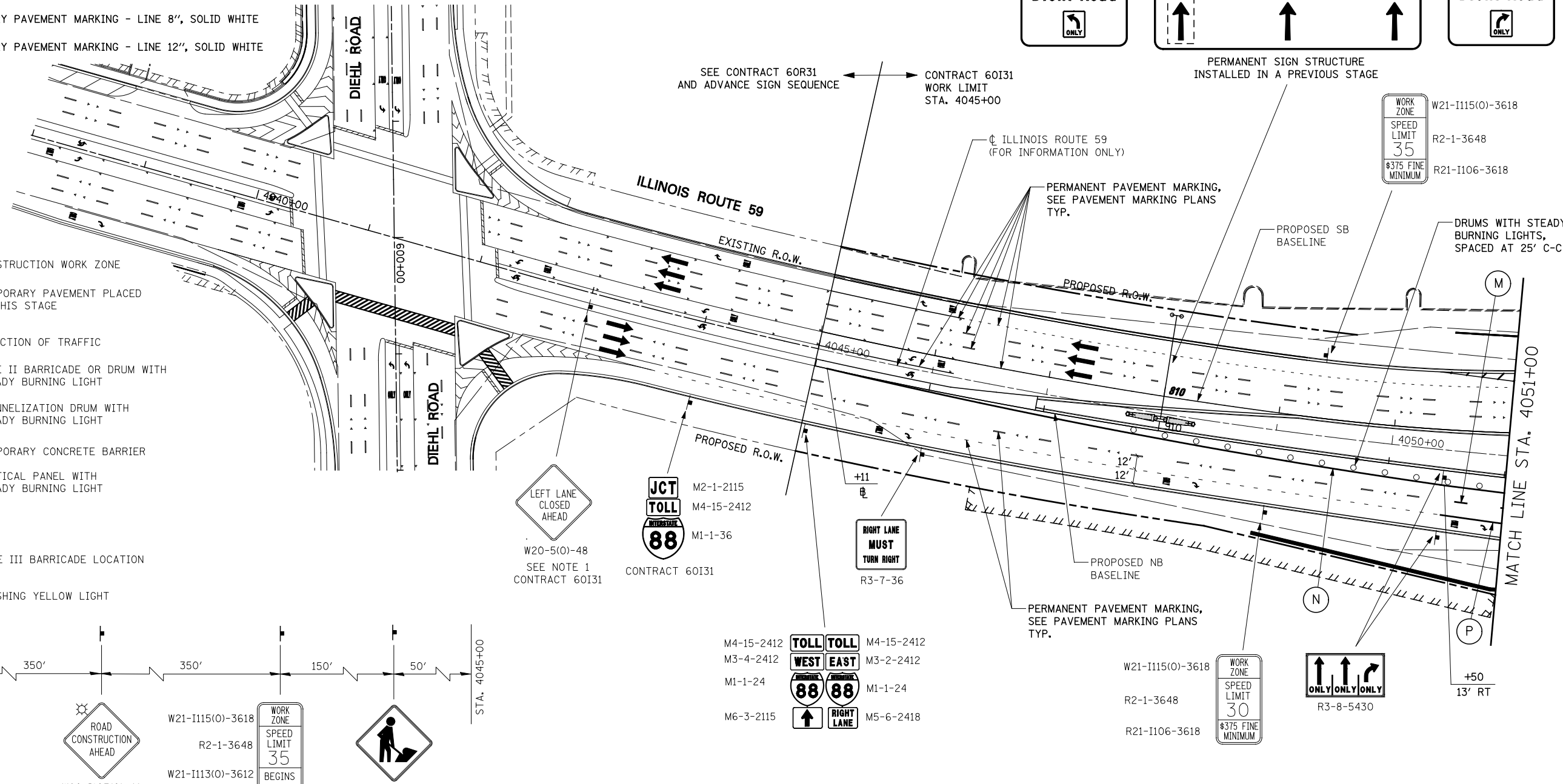
- (P) WET REFLECTIVE TEMPORARY TAPE, TYPE III, 6", SOLID WHITE
- (Q) WET REFLECTIVE TEMPORARY TAPE, TYPE III, 6", WHITE DOTTED (2' LINE - 6' SPACE) (UNLESS OTHERWISE NOTED)
- (R) WET REFLECTIVE TEMPORARY TAPE, TYPE III, 8", SOLID WHITE
- (S) WET REFLECTIVE TEMPORARY TAPE, TYPE III, 12", SOLID YELLOW
- (T) WET REFLECTIVE TEMPORARY TAPE, TYPE III, 24", SOLID WHITE
- (U) WET REFLECTIVE TEMPORARY TAPE, TYPE III, LETTERS & SYMBOLS

ALIGNMENT LEGEND

+39.5 INDICATES STATION MEASURED FROM SB BASELINE
+39.5 INDICATES STATION MEASURED FROM NB BASELINE

LEGEND

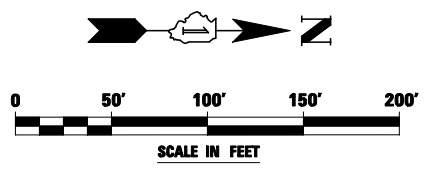
- CONSTRUCTION WORK ZONE
- TEMPORARY PAVEMENT PLACED IN THIS STAGE
- DIRECTION OF TRAFFIC
- TYPE II BARRICADE OR DRUM WITH STEADY BURNING LIGHT
- CHANNELIZATION DRUM WITH STEADY BURNING LIGHT
- TEMPORARY CONCRETE BARRIER
- VERTICAL PANEL WITH STEADY BURNING LIGHT
- SIGN
- TYPE III BARRICADE LOCATION
- FLASHING YELLOW LIGHT



NOTES

- ADVANCE SIGN LOCATIONS SHALL BE COORDINATED WITH ADJACENT CONTRACT. "ROAD CONSTRUCTION AHEAD" SIGN SHALL BE PLACED WHEN WARRANTED BY WORK ZONE CONDITIONS OR AS DIRECTED BY THE ENGINEER.

ADVANCE SIGNING FOR NORTHBOUND IL ROUTE 59
 (SPACING MAY VARY DUE TO FIELD CONDITIONS)
 COORDINATE WITH CONTRACT 60R31, SEE NOTE 1



FILE NAME =	USER NAME = #USER#	DESIGNED <i>PJO</i>	REVISED -
#FILE#		DRAWN <i>KES</i>	REVISED -
	PLOT SCALE = #SCALE#	CHECKED <i>JCM</i>	REVISED -
	PLOT DATE = #DATE#	DATE <i>10/15/2012</i>	REVISED -

**STATE OF ILLINOIS
 DEPARTMENT OF TRANSPORTATION**

MAINTENANCE OF TRAFFIC - STAGE 4B	
ILLINOIS ROUTE 59	
SCALE:	SHEET NO. 114 OF 118 SHEETS STA. 4038+00 TO STA. 4051+00

F.A.P. RTE.	SECTION	COUNTY	TOTAL SHEETS	SHEET NO.
338	(112 & 113) WRS-5	DUPAGE	963	230
CONTRACT NO. 60I31				
ILLINOIS FED. AID PROJECT				