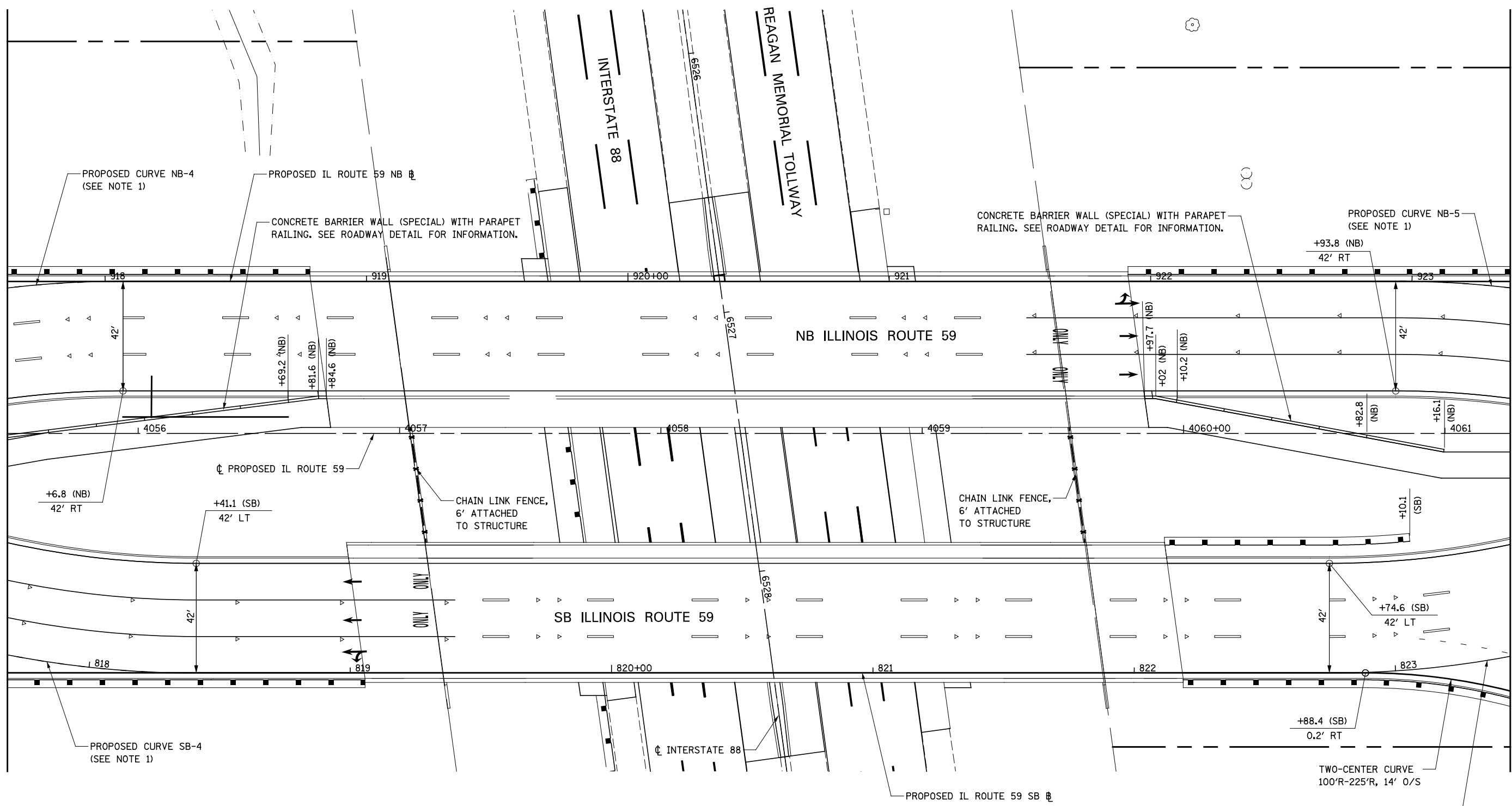


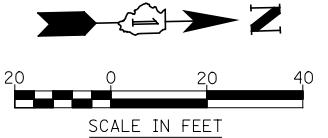
MATCH LINE STA. 4055+50

MATCH LINE STA. 4061+25



**NOTES**

1. FOR PROPOSED ILLINOIS ROUTE 59 AND I-88 RAMP BASELINE INFORMATION SEE ALIGNMENT, BENCHMARKS, AND TIES - ILLINOIS ROUTE 59 NORTHBOUND & SOUTHBOUND BASELINE AND I-88 RAMP DATA SHEETS.
2. FOR PROPOSED PAVEMENT, CURB & GUTTER, AND PROFILE INFORMATION SEE PLAN / PROFILE - ILLINOIS ROUTE 59 AND PLAN / PROFILE - I-88 RAMP SHEETS.
3. FOR PROPOSED PAVEMENT MARKING & SIGNAGE INFORMATION SEE PAVEMENT MARKING AND SIGNING - ILLINOIS ROUTE 59 AND PAVEMENT MARKING AND SIGNING - I-88 RAMP SHEETS.
4. FOR PROPOSED SIDEWALK AND SHARED-USE PATH INFORMATION SEE SIDEWALK / SHARED-USE PATH PLANS.



FILE NAME =	USER NAME = \$USER\$	DESIGNED <i>PJO</i>	REVISED -
*FILE#		DRAWN <i>KES</i>	REVISED -
	PLOT SCALE = \$SCALE\$	CHECKED <i>JCM</i>	REVISED -
	PLOT DATE = \$DATE\$	DATE <i>10/15/2012</i>	REVISED -

**STATE OF ILLINOIS  
DEPARTMENT OF TRANSPORTATION**

**GEOMETRIC LAYOUT - ILLINOIS ROUTE 59**

SCALE: AS SHOWN SHEET NO. 3 OF 21 SHEETS STA. 4055+50 TO STA. 4061+25

F.A.P. RTE.	SECTION	COUNTY	TOTAL SHEETS	SHEET NO.
338	(112 & 113) WRS-5	DUPAGE	963	265
CONTRACT NO. 60131				
ILLINOIS FED. AID PROJECT				