

SYMBOL LEGEND

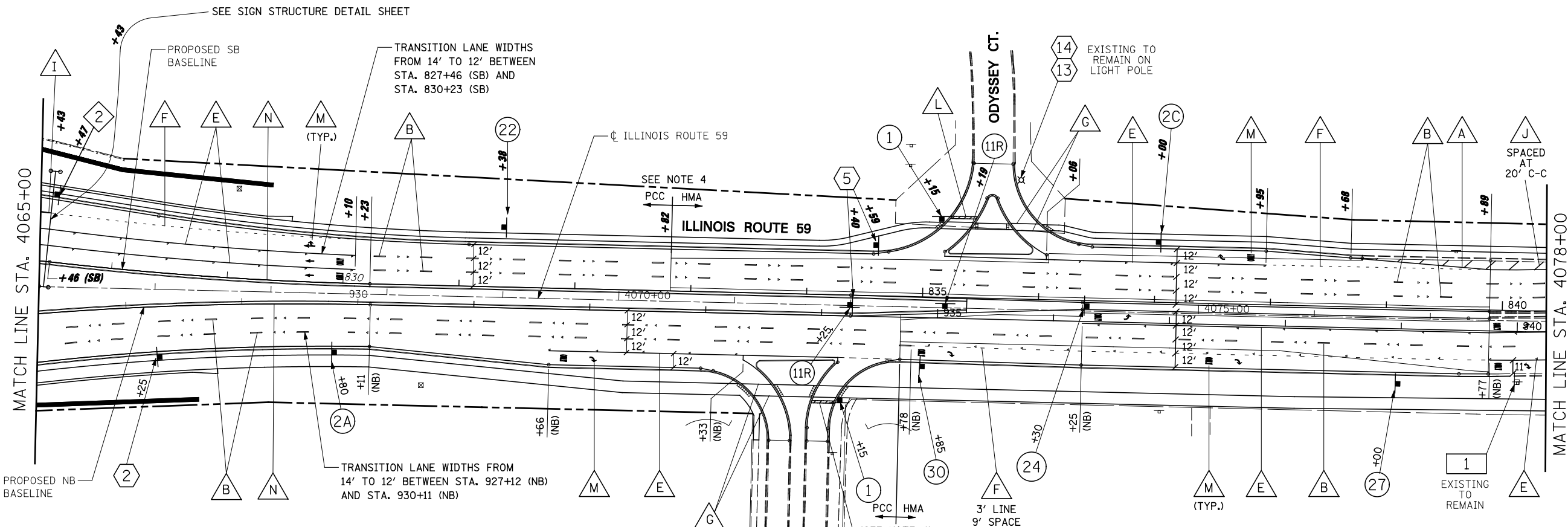
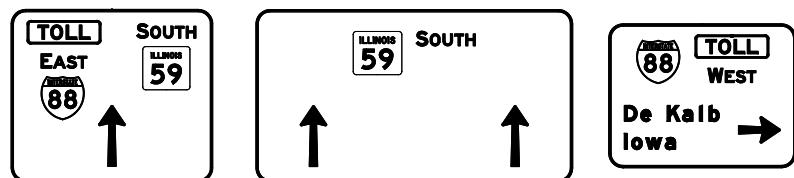
- INDICATES SIGN IS MOUNTED TO A TRAFFIC SIGNAL POLE (TYP.)
- 1 REGULATORY SIGN (R SERIES)
- 1 WARNING SIGN (W SERIES)
- 1 GUIDE SIGN (D/M SERIES)
- 1 SPECIAL/OTHER SIGNS

NOTES

1. PAVEMENT MARKINGS AND RAISED REFLECTIVE PAVEMENT MARKERS SHALL BE PLACED IN ACCORDANCE WITH IDOT DISTRICT 1 DETAILS TC-11 AND TC-13.
2. SIGN LOCATIONS MAY VARY BASED ON FIELD CONDITIONS.
3. ALL POST-MOUNTED SIGNS SHALL BE MOUNTED ON TELESCOPING POLES IN ACCORDANCE WITH HIGHWAY STANDARD 728001 UNLESS OTHERWISE NOTED.
4. ALL PERMANENT PAVEMENT MARKING ON PCC PAVEMENT SHALL BE POLYUREA PAVEMENT MARKING, TYPE I AND ON HMA PAVEMENT SHALL BE THERMOPLASTIC PAVEMENT MARKING OF THE SPECIFIED TYPE IN THE PAVEMENT MARKING LEGEND.
5. STOP BARS SHALL BE LOCATED 4' BEHIND CROSSWALK MARKING UNLESS OTHERWISE INDICATED.

PAVEMENT MARKING LEGEND (SEE NOTE 4)

- A PAVEMENT MARKING - LINE 4", SOLID WHITE
- B PAVEMENT MARKING - LINE 4", WHITE SKIP-DASH (10' LINE - 30' SPACE) WITH RAISED REFLECTIVE PAVEMENT MARKERS, ONE-WAY CRYSTAL (SPACED AT 80' C-C)
- C NOT USED
- D NOT USED
- E PAVEMENT MARKING - LINE 6", SOLID WHITE WITH RAISED REFLECTIVE PAVEMENT MARKERS, ONE-WAY CRYSTAL (SPACED AT 40' C-C)
- F PAVEMENT MARKING - LINE 6", WHITE DOTTED (2' LINE - 6' SPACE, UNLESS OTHERWISE NOTED)
- G PAVEMENT MARKING - LINE 6", SOLID WHITE
- H PAVEMENT MARKING - LINE 6", SOLID WHITE WITH 12" SOLID WHITE DIAGONALS AT 45°, SPACED AT 2'
- I PAVEMENT MARKING - LINE 8", SOLID WHITE
- J PAVEMENT MARKING - LINE 12", SOLID WHITE
- K NOT USED
- L PAVEMENT MARKING - LINE 24", SOLID WHITE
- M PAVEMENT MARKING - LETTERS & SYMBOLS
- N PAVEMENT MARKING - LINE 4", SOLID YELLOW
- O PAVEMENT MARKING - LINE 8", YELLOW DOTTED (2' LINE - 6' SPACE)
- P PAVEMENT MARKING - LINE 8", SOLID YELLOW

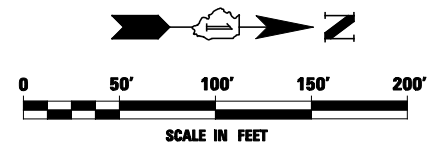


SIGN LEGEND

- 1 STOP R1-1-36 R3-5R-3036 MOUNT ON SEPARATE POSTS
- 11R ONE WAY R6-2R-2430
- 2A SPEED LIMIT 40 R2-1-3036 (40 MPH)
- 2C SPEED LIMIT 30 R2-1-3036 (30 MPH)
- 24 ONLY R3-5L-3036
- 27 ONLY R3-5R-3036
- 30 RIGHT LANE MUST TURN RIGHT R3-7-36
- 22 ONLY ONLY R3-8-5430
- 1 ILLINOIS YOUTH CENTER WARRENVILLE SPECIAL-WARRENVILLE EXISTING TO REMAIN
- 2 NORTH ILLINOIS 59 M3-1-2412 M1-I100-24
- 5 M4-15-2412 M3-2-2412 M1-1-24 M5-KL-2418
- TOLL EAST WEST M4-15-2412 M3-4-2412 M1-1-24 M5-KR-2418
- KEEP LEFT KEEP RIGHT
- 11R W11-2-36 W16-9P-2412

ALIGNMENT LEGEND

- +39.5 INDICATES STATION MEASURED FROM SB BASELINE
- +39.5 INDICATES STATION MEASURED FROM NB BASELINE



FILE NAME =	USER NAME = #USER#	DESIGNED PJO	REVISED -	STATE OF ILLINOIS DEPARTMENT OF TRANSPORTATION	PAVEMENT MARKING AND SIGNING ILLINOIS ROUTE 59	F.A.P. RTE.	SECTION	COUNTY	TOTAL SHEETS	SHEET NO.	
#FILE#		DRAWN KES	REVISED -			338	(112 & 113) WRS-5	DUPAGE	963	383	
		CHECKED JCM	REVISED -			CONTRACT NO. 60131					
		DATE 10/15/2012	REVISED -			ILLINOIS FED. AID PROJECT					