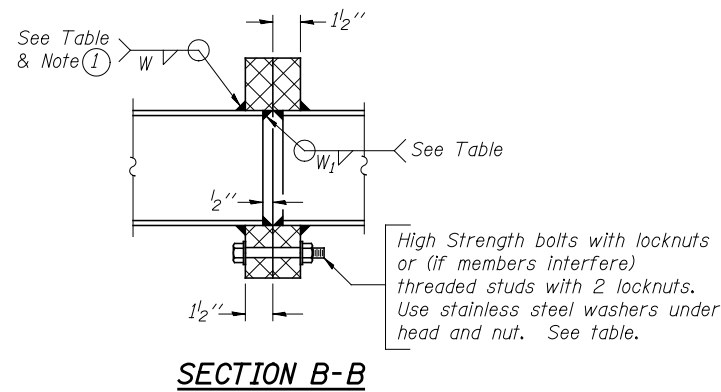
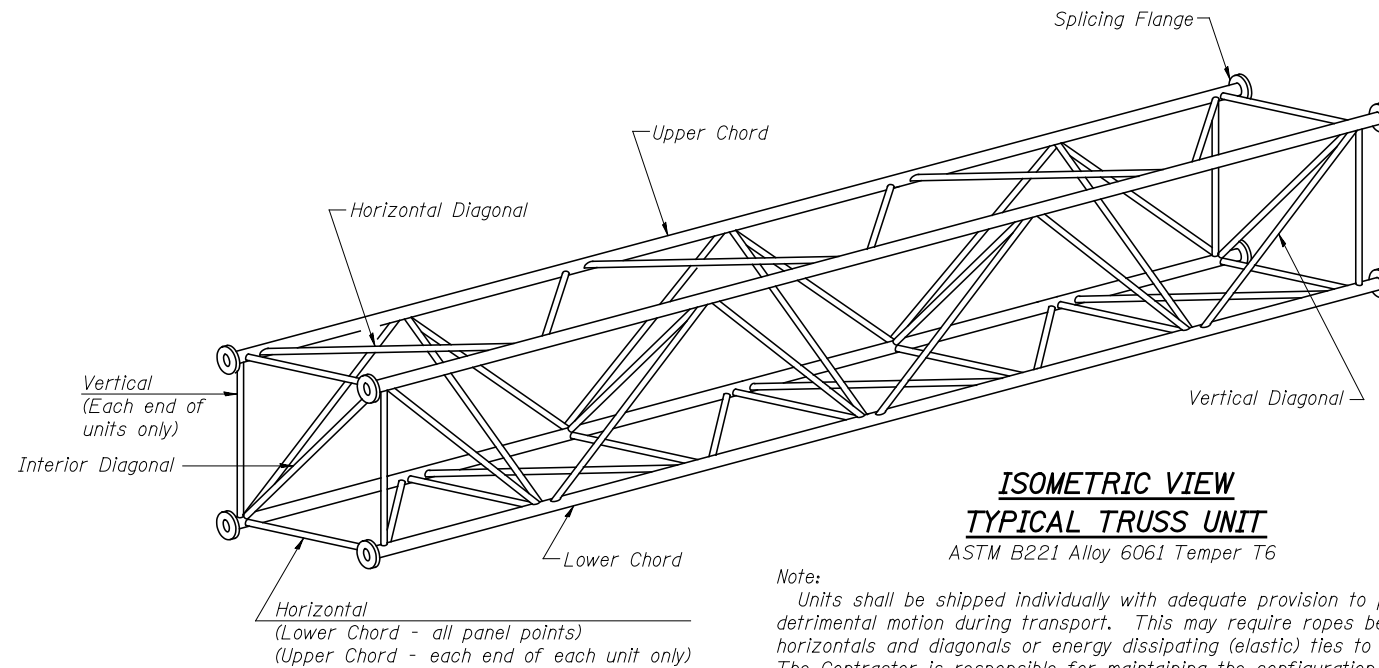


**TRUSS UNIT TABLE**

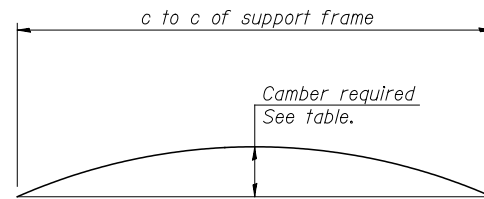
Structure Number	Station	Design Truss Type	Exterior Units (2)			Interior Unit				Upper & Lower Chord		Verticals; Horizontals; Vertical, Horizontal, and Interior Diagonals		Camber at Midspan	Splicing Flange					
			No. Panels per Unit	Unit Lgth.(L <sub>e</sub> )	Panel Lgth.(P)	No. Req'd.	No. Panels per Unit	Unit Lgth.(L <sub>i</sub> )	Panel Lgth.(P)	O.D.	Wall	O.D.	Wall		Bolts		Weld Sizes		A	B
															No./Splice	Dia.	W	W <sub>1</sub>		
IS022S059L1	810+00	II-A	5	28'-11 1/2"	5'-5"	1	6	33'-9"	5'-5"	5 1/2"	5/16"	3"	5/16"	2 1/2"	6	7/8"	3/8"	1/4"	9 1/4"	12 1/4"
IS022S059R2	914+05	II-A	6	34'-1 1/2"	5'-4 1/2"	1	6	33'-6"	5'-4 1/2"	6"	5/16"	3"	5/16"	3"	6	7/8"	3/8"	1/4"	10 1/4"	13 3/4"
IS022S059L3	827+43	II-A	6	34'-1 1/2"	5'-4 1/2"	1	6	33'-6"	5'-4 1/2"	6"	5/16"	3"	5/16"	3"	6	7/8"	3/8"	1/4"	10 1/4"	13 3/4"



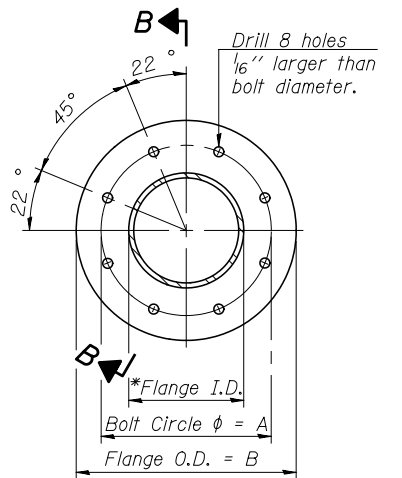
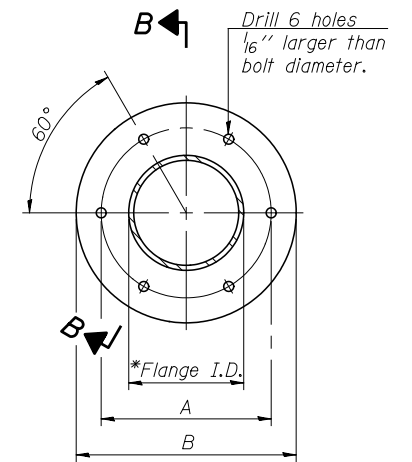
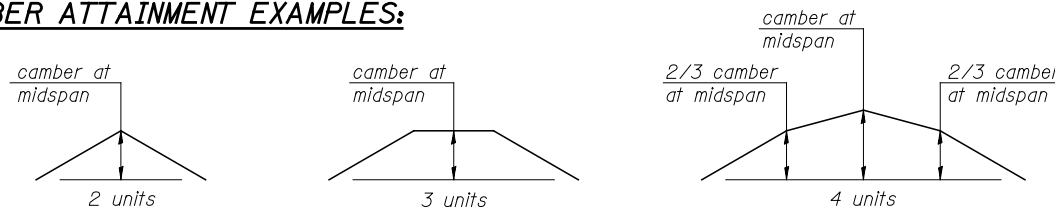
① Splicing Flanges shall be attached to each truss unit with the truss shop assembled to camber shown. Truss units shall be in proper alignment and flange surfaces shall be shop bolted into full contact before welding. Sufficient external welds or tacks shall be made to secure flanges until remaining welds are made after disassembly. Adjacent flanges shall be "match marked" to insure proper field assembly.



Note:  
Units shall be shipped individually with adequate provision to prevent detrimental motion during transport. This may require ropes between horizontals and diagonals or energy dissipating (elastic) ties to the vehicle. The Contractor is responsible for maintaining the configuration and protection of the units.



**CAMBER ATTAINMENT EXAMPLES:**



OS4-A-2

6-1-12

FILE NAME = #FILE#	USER NAME = #USER#	DESIGNED PJO	REVISED -	<b>STATE OF ILLINOIS DEPARTMENT OF TRANSPORTATION</b>	<b>OVERHEAD SIGN STRUCTURES - ALUMINUM TRUSS DETAILS FOR TRUSS TYPES I-A, II-A AND III-A</b>	F.A.P. RTE.	SECTION	COUNTY	TOTAL SHEETS	SHEET NO.
	DRAWN KES	REVISED -	338			(112 & 113) WRS-5	DUPAGE	963	406	
	CHECKED JCM	REVISED -	CONTRACT NO. 60I31							
	DATE 10/15/2012	REVISED -	ILLINOIS FED. AID PROJECT							
				SCALE:	SHEET NO. 6 OF 15 SHEETS	STA.	TO STA.			