

NOTES

- HIGH MAST LIGHT TOWER, CCTV CAMERA AND CONDUIT FROM HANDHOLE TO LIGHT TOWER ARE SHOWN FOR INFORMATIONAL PURPOSES ONLY. SEE LIGHTING PLANS FOR DETAILS.
- FIBER OPTIC INNERDUCT SHOWN IS FOR INFORMATION ONLY. SEE LIGHTING PLANS FOR DETAILS.

MATCH LINE STA. 922+50 (NB)

MATCH LINE STA. 822+56 (SB)

(A)

NO TURNS

R3-3
36" x 36"
2 REQUIRED

NO TURN ON RED

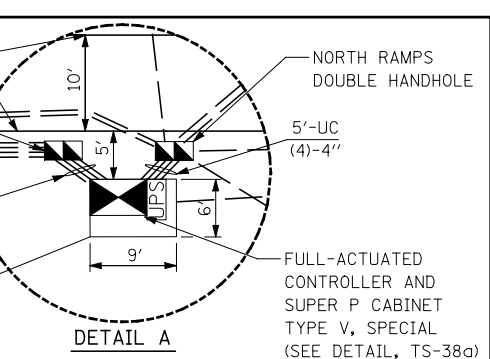
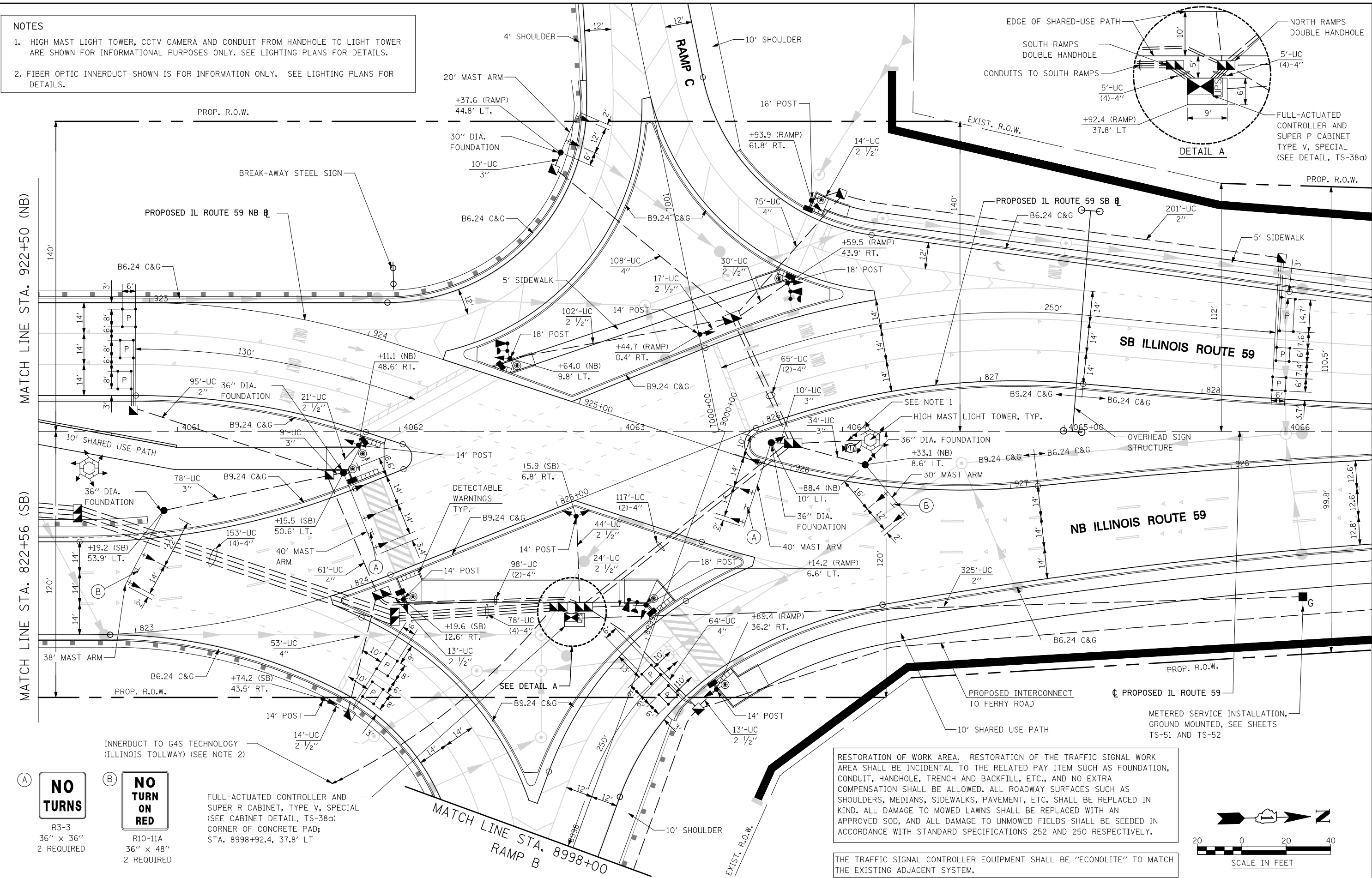
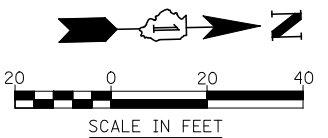
R10-11A
36" x 48"
2 REQUIRED

FULL-ACTUATED CONTROLLER AND SUPER R CABINET, TYPE V, SPECIAL (SEE CABINET DETAIL, TS-38a) CORNER OF CONCRETE PAD; STA. 8998+92.4, 37.8' LT

INNERDUCT TO G4S TECHNOLOGY (ILLINOIS TOLLWAY) (SEE NOTE 2)

RESTORATION OF WORK AREA. RESTORATION OF THE TRAFFIC SIGNAL WORK AREA SHALL BE INCIDENTAL TO THE RELATED PAY ITEM SUCH AS FOUNDATION, CONDUIT, HANDHOLE, TRENCH AND BACKFILL, ETC., AND NO EXTRA COMPENSATION SHALL BE ALLOWED. ALL ROADWAY SURFACES SUCH AS SHOULDERS, MEDIANS, SIDEWALKS, PAVEMENT, ETC. SHALL BE REPLACED IN KIND. ALL DAMAGE TO MOWED LAWNS SHALL BE REPLACED WITH AN APPROVED SOD, AND ALL DAMAGE TO UNMOWED FIELDS SHALL BE SEED IN ACCORDANCE WITH STANDARD SPECIFICATIONS 252 AND 250 RESPECTIVELY.

THE TRAFFIC SIGNAL CONTROLLER EQUIPMENT SHALL BE "ECONOLITE" TO MATCH THE EXISTING ADJACENT SYSTEM.



FILE NAME =	USER NAME = #USER*	DESIGNED <i>MJM</i>	REVISED -	STATE OF ILLINOIS DEPARTMENT OF TRANSPORTATION	PROPOSED TRAFFIC SIGNAL PLAN ILLINOIS ROUTE 59 AND I-88 NORTH RAMPS			F.A.P. RTE.	SECTION	COUNTY	TOTAL SHEETS	SHEET NO.
#FILE#		DRAWN <i>KES</i>	REVISED -		338	(112 & 113) WRS-5	DUPAGE	963	445			
PLOT SCALE = #SCALE#		CHECKED <i>JCM</i>	REVISED -		TS-30				CONTRACT NO. 60131			
PLOT DATE = #DATE#		DATE <i>10/15/2012</i>	REVISED -		ILLINOIS	FED. AID PROJECT						