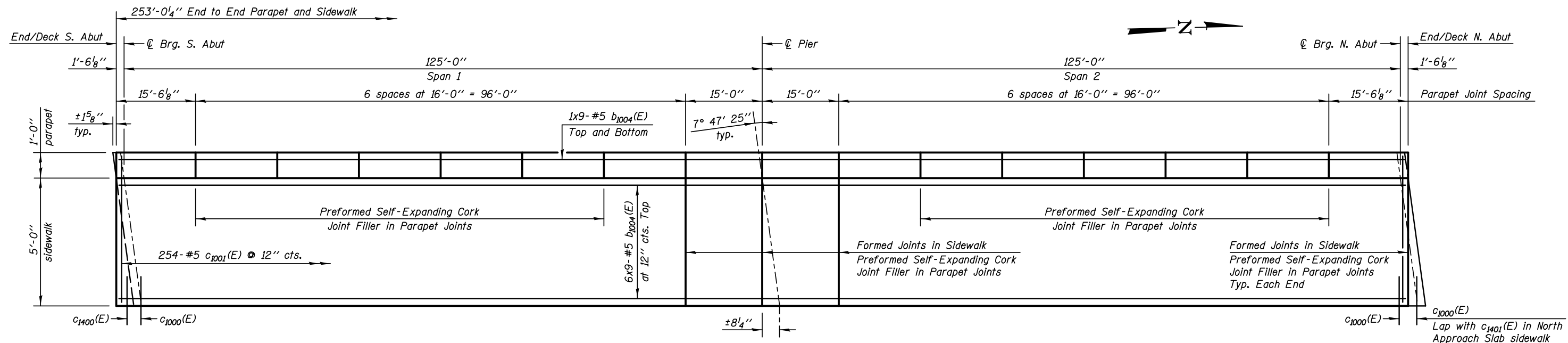
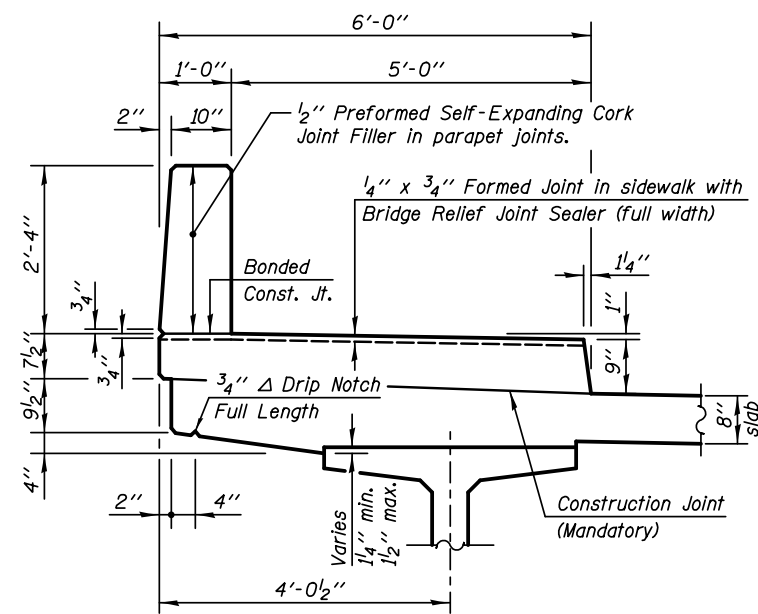


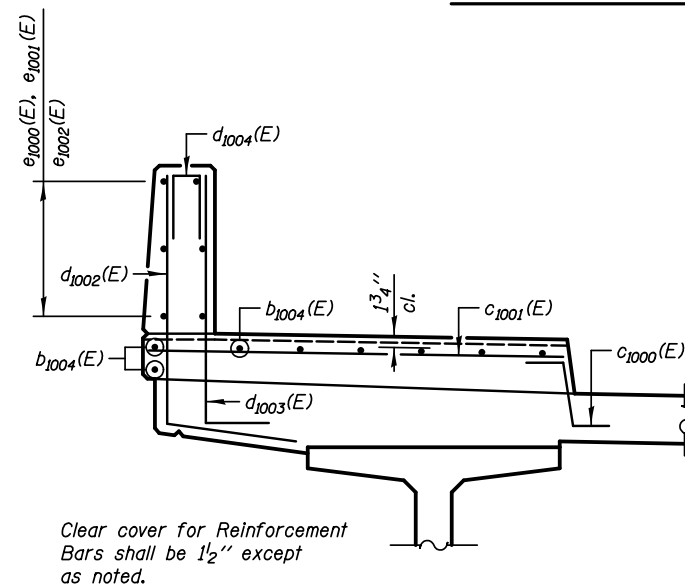
**INSIDE ELEVATION OF PARAPET**



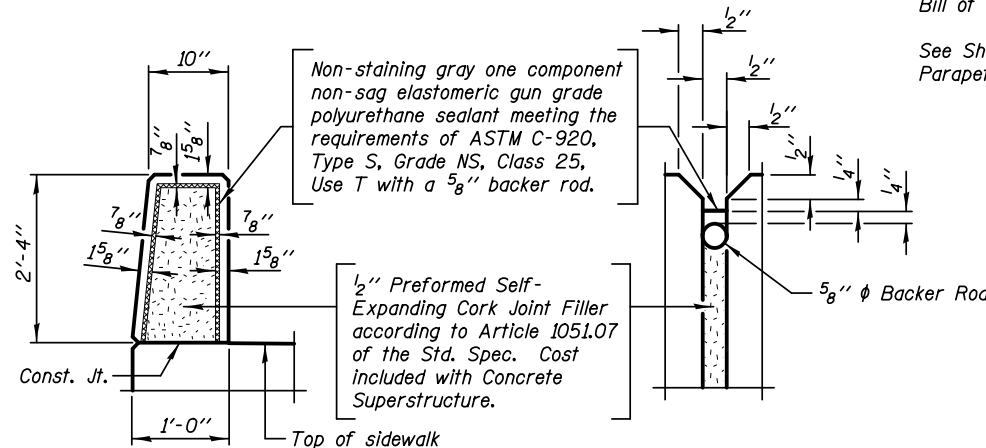
**SIDEWALK - PARTIAL PLAN**



**SECTION THRU SIDEWALK & PARAPET**  
(Showing Dimensions)



**SECTION THRU SIDEWALK & PARAPET**  
(Showing Reinforcement Bars)



**PARAPET JOINT DETAILS**

**Notes:**  
 Bars indicated thus 20 x 3-#5 etc. indicates 20 lines of bars with 3 lengths per line.  
 See Sheet SA-24 for Deck Misc. Details and Bill of Materials.  
 See Sheet SA-38 for Bridge Fence Railing, Parapet Mounted Details

**MIN. BAR LAPS:**  
 #5 = 3'-3"

<b>KNIGHT</b> Engineers & Architects	DESIGNED - WPM	REVISOR	<b>STATE OF ILLINOIS</b> <b>DEPARTMENT OF TRANSPORTATION</b>	<b>SIDEWALK AND PARAPET DETAILS (SB)</b> S.N. 022-2029 (SB) TOLLWAY B.N. 826 S.N. 022-2030 (NB) TOLLWAY B.N. 825 SHEET NO. SA-21 OF 63 SHEETS	F.A.P. RTE.	SECTION	COUNTY	TOTAL SHEETS	SHEET NO.
	CHECKED - TB	REVISOR			338	(112 & 113) WRS-5	DUPAGE	963	605
SCALE - NONE	DRAWN - TB	REVISOR			ILLINOIS FED. AID PROJECT				
DATE - 10/15/2012	CHECKED - WPM	REVISOR							