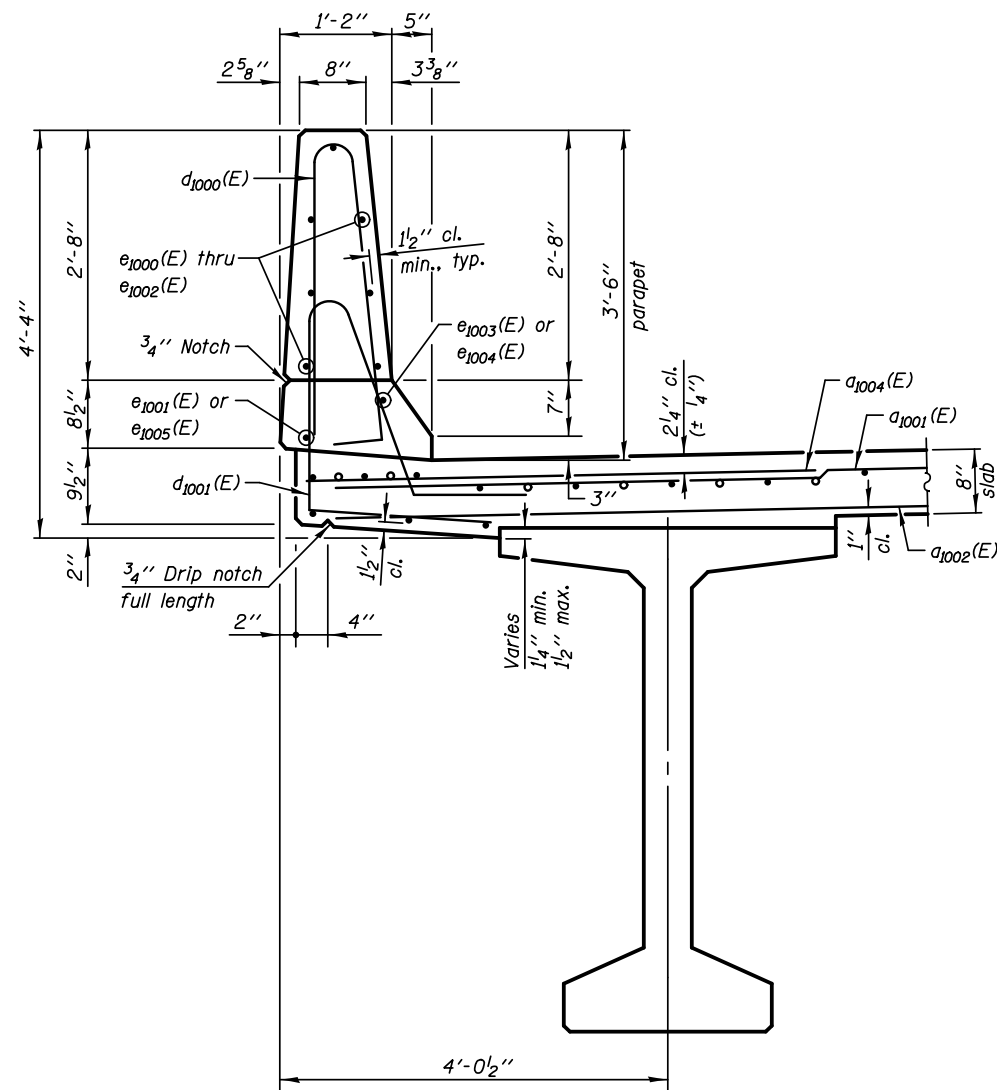
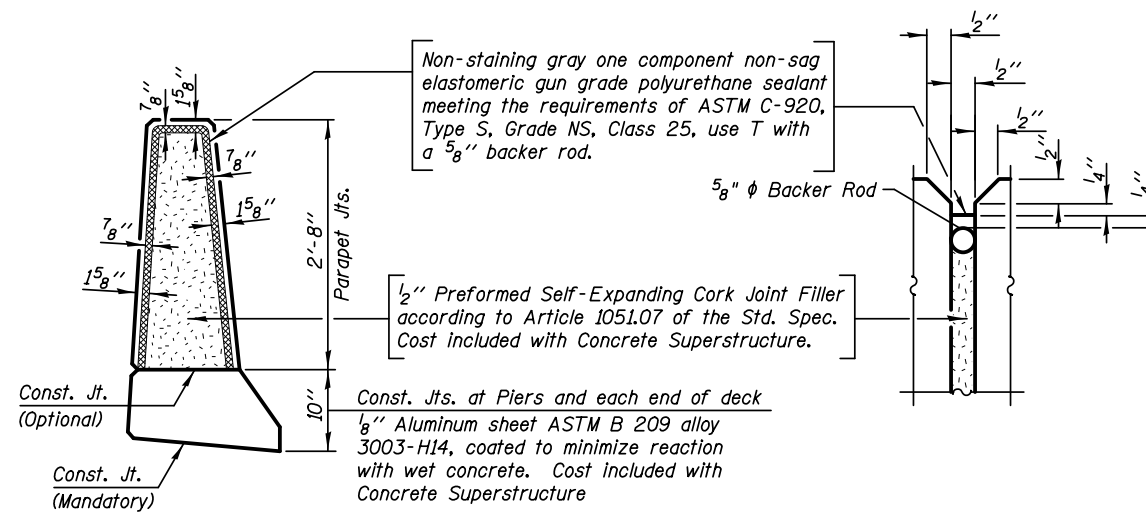


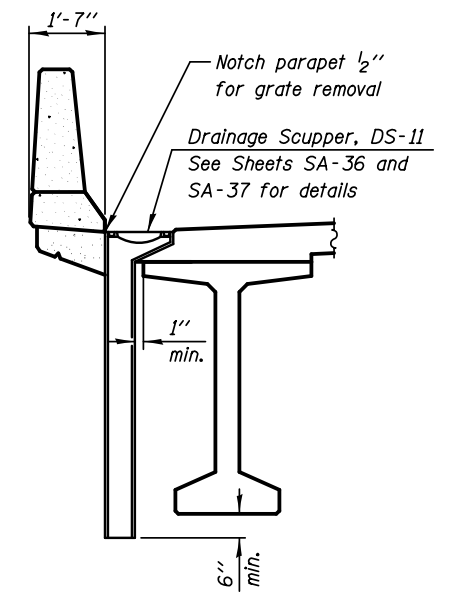
INSIDE ELEVATION OF EAST PARAPET



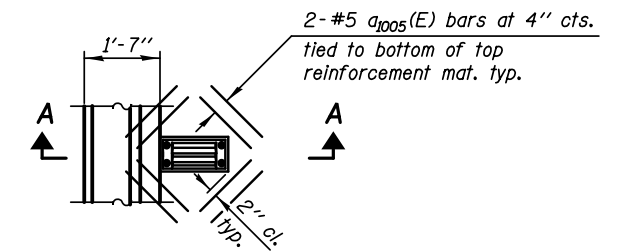
SECTION THRU PARAPET



PARAPET JOINT DETAILS



SECTION A-A



PLAN

Note:
Cut longitudinal reinforcement to clear drainage scuppers.

Notes:

Bars indicated thus 20 x 3-#5 etc. indicates 20 lines of bars with 3 lengths per line.

See Sheet SA-24 for Deck Misc. Details and Bill of Materials.

MIN. BAR LAPS:

#4 = 2'-4"
#8 = 5'-5"

DESIGNED - WPM	REVISION
CHECKED - TB	REVISION
DRAWN - TB	REVISION
CHECKED - WPM	REVISION
SCALE - NONE	
DATE - 10/15/2012	

F.A.P. RTE.	SECTION	COUNTY	TOTAL SHEETS	SHEET NO.
338	(112 & 113) WRS-5	DUPAGE	963	606
CONTRACT NO. 60131				