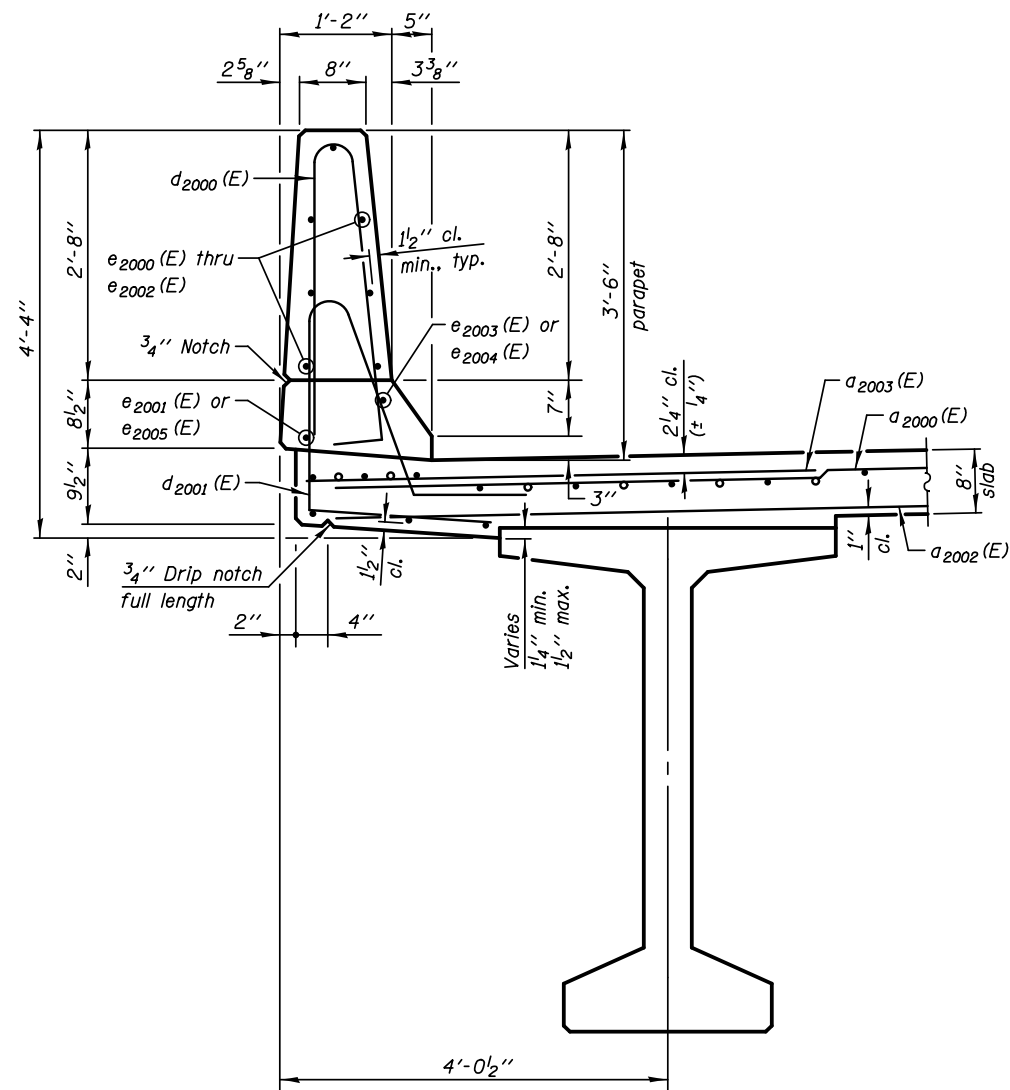
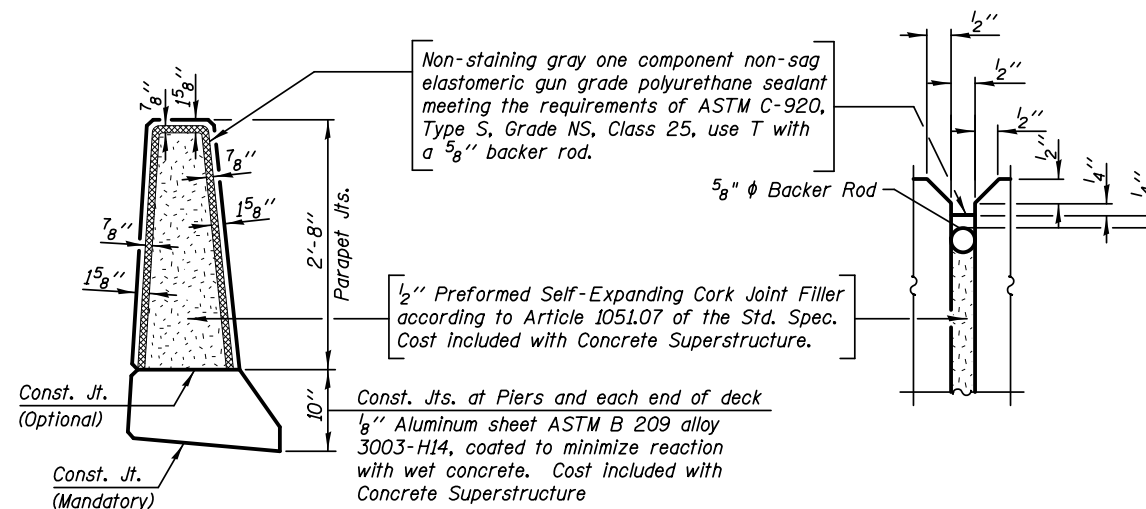


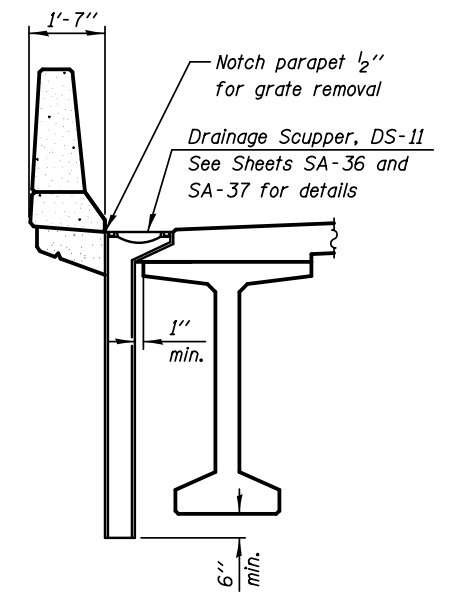
INSIDE ELEVATION OF WEST PARAPET



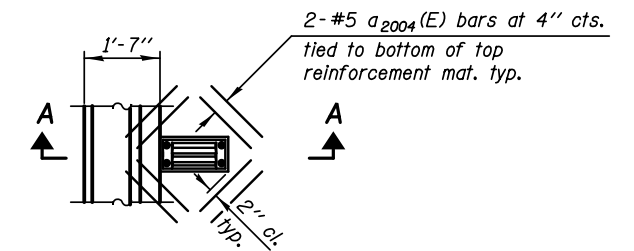
SECTION THRU PARAPET



PARAPET JOINT DETAILS



SECTION A-A



PLAN

Note:
Cut longitudinal reinforcement to clear drainage scuppers.

Notes:

Bars indicated thus 20 x 3-#5 etc. indicates 20 lines of bars with 3 lengths per line.

See Sheet SA-29 for Deck Misc. Details and Bill of Materials.

MIN. BAR LAPS:

#4 = 2'-4"
#8 = 5'-5"

KNIGHT
Engineers & Architects

DESIGNED - WPM	REVISION
CHECKED - TB	REVISION
DRAWN - TB	REVISION
CHECKED - WPM	REVISION
SCALE - NONE	
DATE - 10/15/2012	

STATE OF ILLINOIS
DEPARTMENT OF TRANSPORTATION

WEST PARAPET DETAILS (NB)
S.N. 022-2029 (SB) TOLLWAY B.N. 826
S.N. 022-2030 (NB) TOLLWAY B.N. 825
SHEET NO. SA-27 OF 63 SHEETS

F.A.P. RTE.	SECTION	COUNTY	TOTAL SHEETS	SHEET NO.
338	(112 & 113) WRS-5	DUPAGE	963	611
CONTRACT NO. 60131				
ILLINOIS FED. AID PROJECT				